

VISUAL GUIDE TO SMOKE AND CARBON MONOXIDE DETECTORS IN THE 2018 IRC

Smoke Alarms R314 2018 IRC

Required Locations:

1. Sleeping Rooms
2. Immediately outside sleeping rooms
3. On each story of dwelling, including basements and habitable attics.

Items of Importance:

- Hardwired detectors are required for new construction. (not required on remodels/additions)
- Detectors are required to be interconnected. (wired or wireless interconnection)
- Battery Powered interconnected devices are allowed for Additions/Alterations.
- Fire Alarm systems in compliance with NFPA 72 are allowed to satisfy the code for compliance.

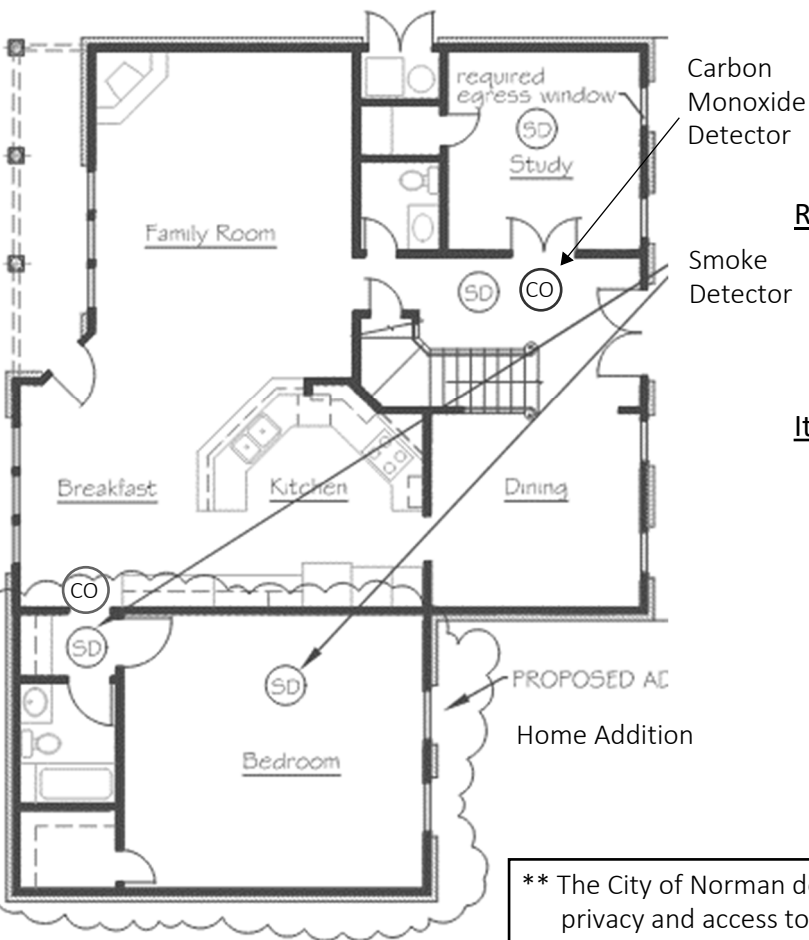
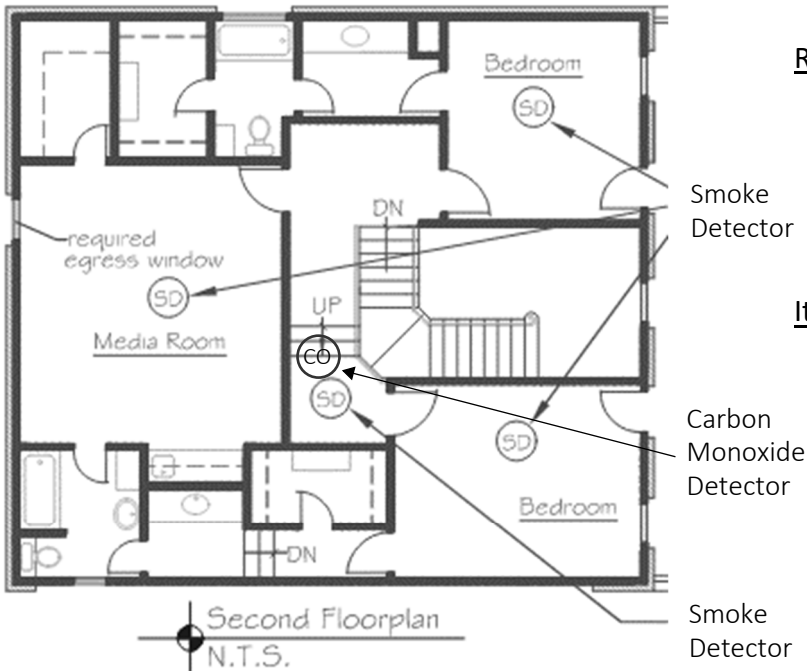
Carbon Monoxide Alarms R315 2018 IRC

Required Locations:

1. Outside Sleeping Rooms
2. In bedrooms if a fuel burning appliance is in the room.

Items of Importance:

- Detectors to be hardwired in new construction. (not required on remodels/additions)
- Fire Alarm systems in compliance with NFPA 72 are allowed to satisfy the code for compliance.



** The City of Norman defines a sleeping room as any room that has privacy and access to a bathroom or closet.