

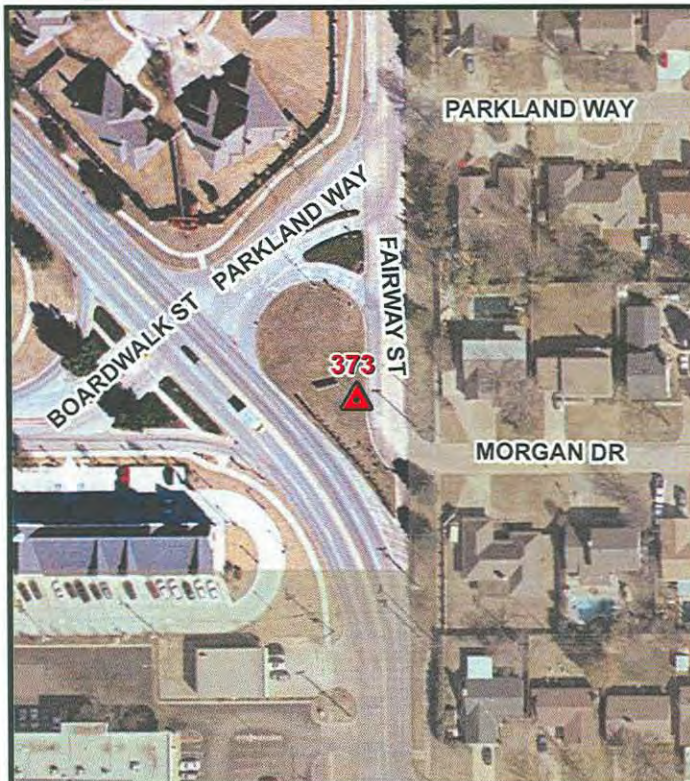


# City of Norman

## Survey Control Monument Data Sheet

Date Printed: March 05, 2009

373



Station No.: 373

Monument Description: 3-1/2" Bronze Disc in Concrete

Horizontal Datum - Oklahoma State Plane NAD83(CORS96), South Zone (U.S. Foot)

Northing: 689,297.640

Easting: 2,124,788.811

Vertical Datum - NAVD 88 (U.S. Foot)

Elevation: 1163.71

### Geodetic Coordinates

North Latitude: 35° 13' 34.4868"

West Longitude: 97° 28' 36.1843"

### Horizontal Control Statement:

The horizontal coordinates were derived from multiple static/rapid static GPS observations to NGS stations "PRCO", "OKDT", "OKTE", and "A-216".

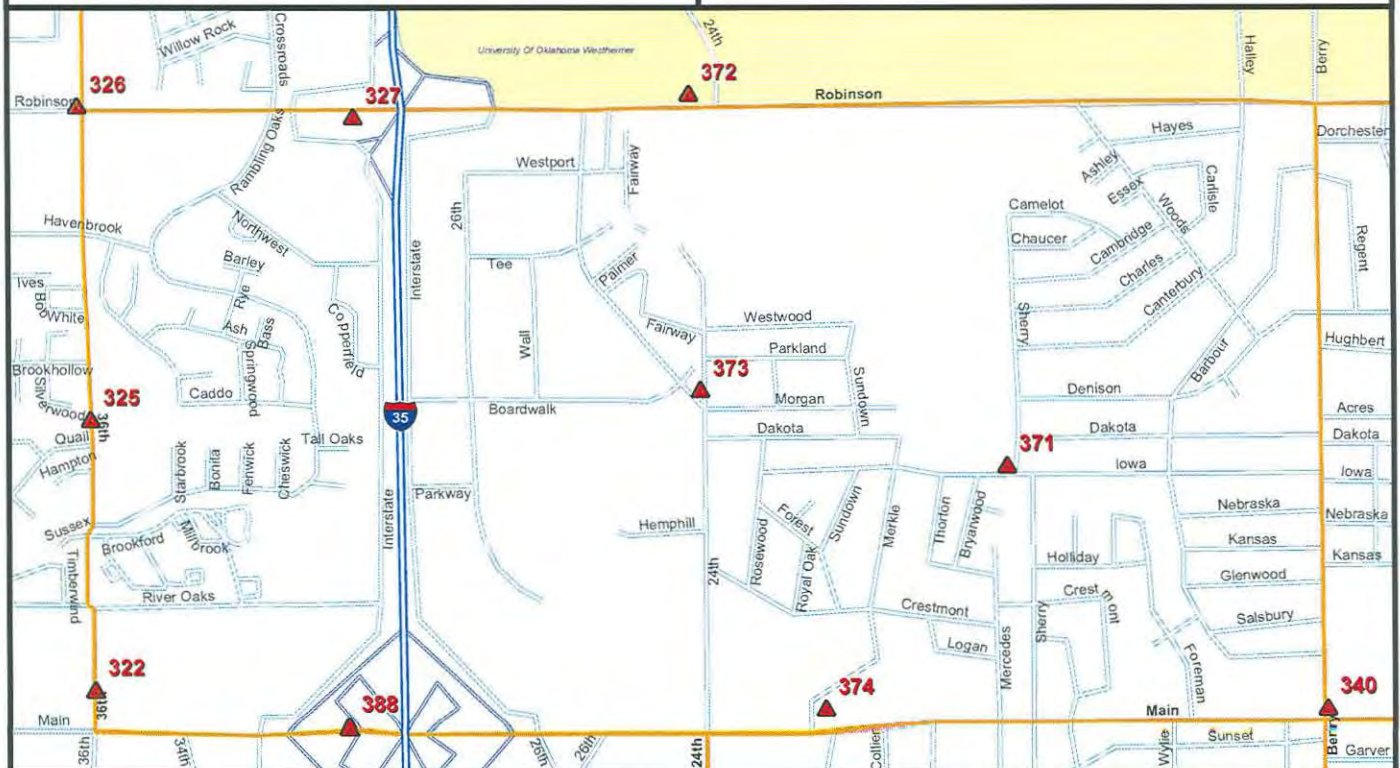
### Vertical Control Statement:

The elevations for this control network were determined by differential leveling techniques from NGS stations "C 14 173", "W 215", "V 215", "U 215", and "A 216".

Combined Scale Factor: 0.99994711

Right arrow sign 53' S  
Power pole w/ down guy 50' E  
Fire hydrant 75' NNW

Set in grass in island of intersection of NW 24th, Fairway, Boardwalk, and Parkland Way



Prepared by Lemke Land Surveying, Inc.

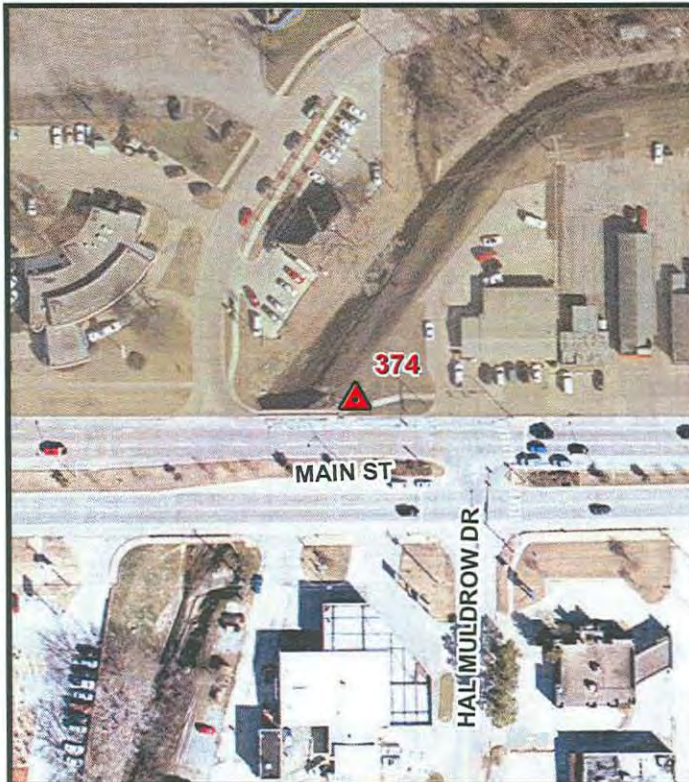


# City of Norman

## Survey Control Monument Data Sheet

Date Printed: March 05, 2009

374



Station No.: 374

Monument Description: 3-1/2" Bronze Disc in Concrete

Horizontal Datum - Oklahoma State Plane NAD83(CORS96), South Zone (U.S. Foot)

Northing: 686,532.066

Easting: 2,125,859.090

Vertical Datum - NAVD 88 (U.S. Foot)

Elevation: 1147.10

### Geodetic Coordinates

North Latitude: 35° 13' 7.0796"

West Longitude: 97° 28' 23.4580"

### Horizontal Control Statement:

The horizontal coordinates were derived from multiple static/rapid static GPS observations to NGS stations "PRCO", "OKDT", "OKTE", and "A-216".

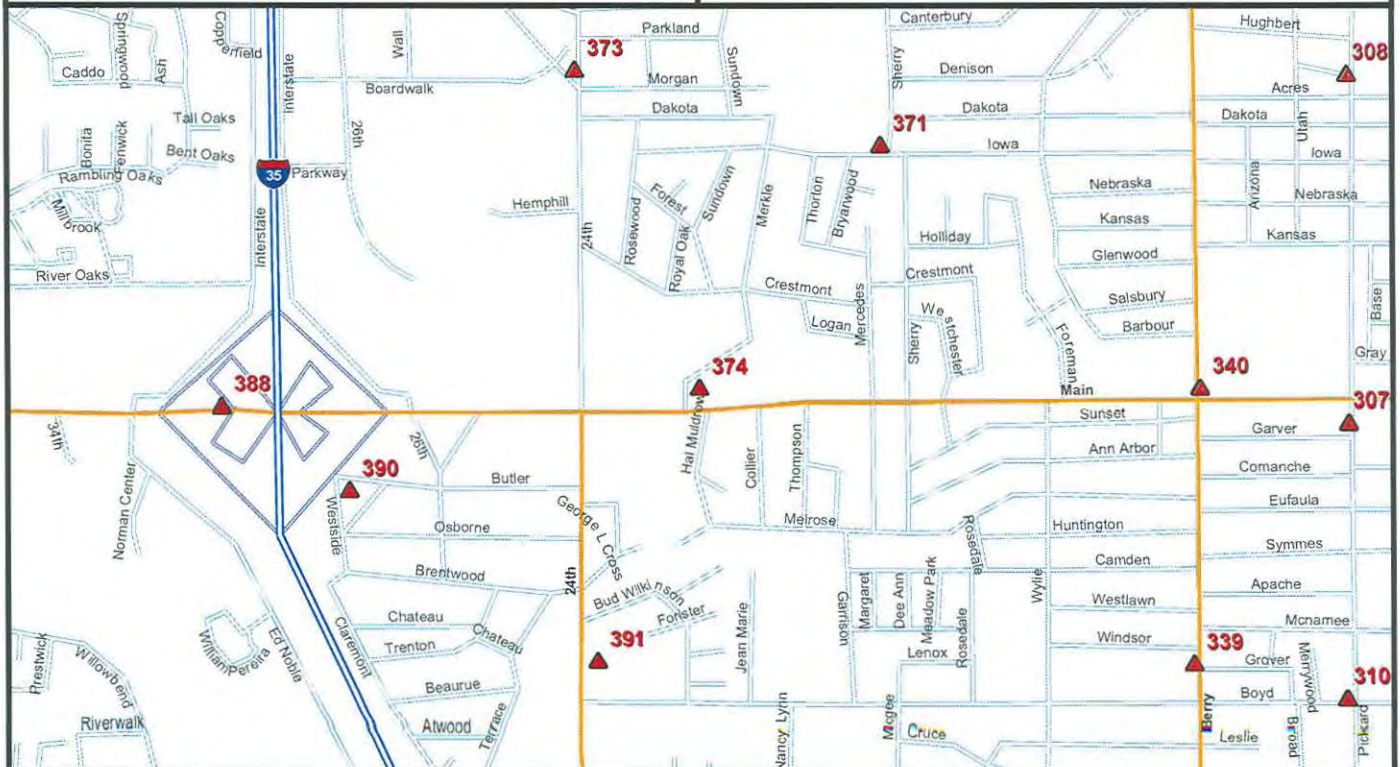
### Vertical Control Statement:

The elevations for this control network were determined by differential leveling techniques from NGS stations "C 14 173", "W 215", "V 215", "U 215", and "A 216".

Combined Scale Factor: 0.99994642

Back of curb 15' S  
Sidewalk bend 17' SW  
Edge of concrete 75' NE

Set in grass area east of drainage structure, north of Main between Merkle and Hal Muldrow



Prepared by Lemke Land Surveying, Inc.



# City of Norman

## Survey Control Monument Data Sheet

Date Printed: March 05, 2009



Station No.: 375

Monument Description: 3-1/2" Bronze Disc in Concrete

Horizontal Datum - Oklahoma State Plane NAD83(CORS96), South Zone (U.S. Foot)

Northing: 691,829.932

Easting: 2,146,006.784

Vertical Datum - NAVD 88 (U.S. Foot)

Elevation: 1189.92

### Geodetic Coordinates

North Latitude: 35° 13' 58.3699"

West Longitude: 97° 24' 20.2628"

### Horizontal Control Statement:

The horizontal coordinates were derived from multiple static/rapid static GPS observations to NGS stations "PRCO", "OKDT", "OKTE", and "A-216".

### Vertical Control Statement:

The elevations for this control network were determined by differential leveling techniques from NGS stations "C 14 173", "W 215", "V 215", "U 215", and "A 216".

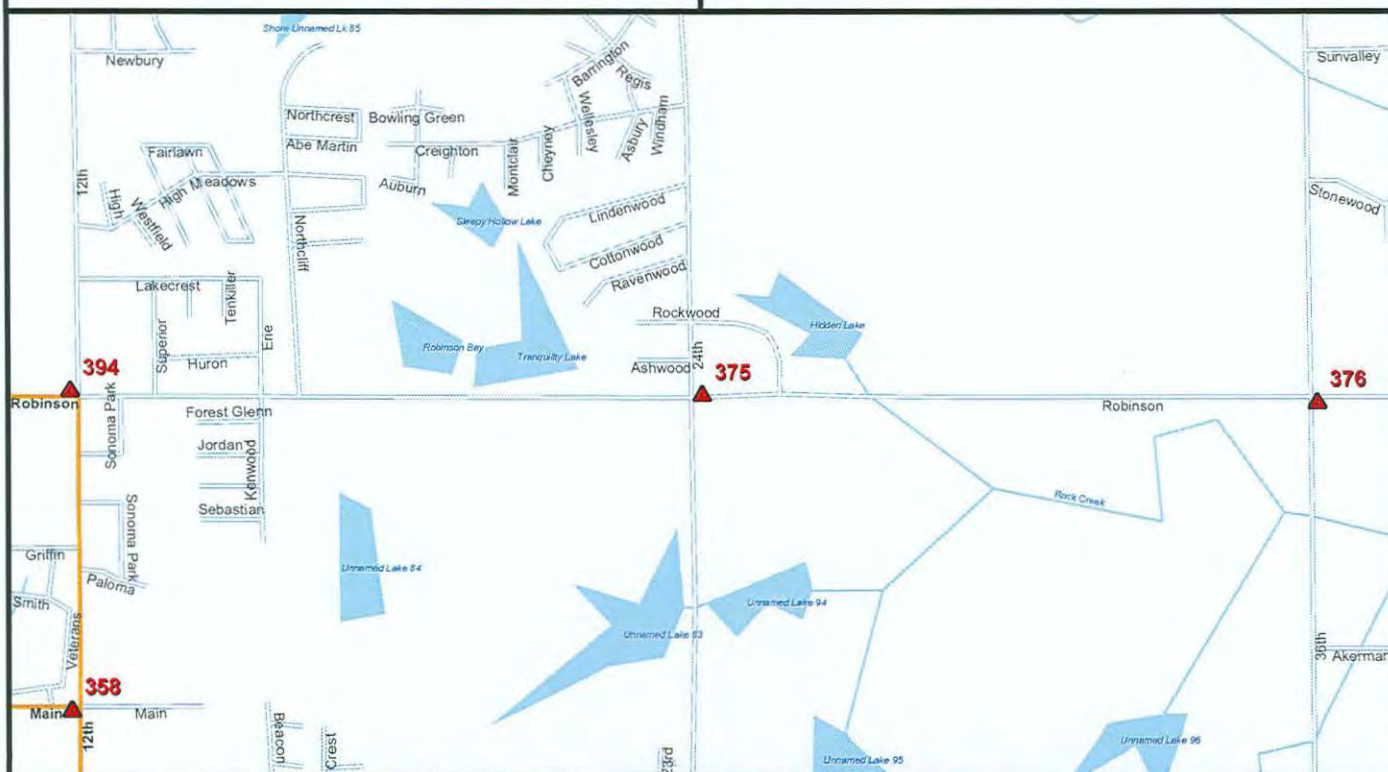
Combined Scale Factor: 0.99994716

Set in grass area at the northeast corner of Robinson and NE 24th

Signal Pole 26.6' NW

Guy Wire 19.5' E

Signal Pull Box 11.9' S





# City of Norman

## Survey Control Monument Data Sheet

Date Printed: March 05, 2009



Station No.: 376

Monument Description: 3-1/2" Bronze Disc in Concrete

Horizontal Datum - Oklahoma State Plane NAD83(CORS96), South Zone (U.S. Foot)

Northing: 691,765.132

Easting: 2,151,264.116

Vertical Datum - NAVD 88 (U.S. Foot)

Elevation: 1151.69

### Geodetic Coordinates

North Latitude: 35° 13' 57.4183"

West Longitude: 97° 23' 16.8955"

### Horizontal Control Statement:

The horizontal coordinates were derived from multiple static/rapid static GPS observations to NGS stations "PRCO", "OKDT", "OKTE", and "A-216".

### Vertical Control Statement:

The elevations for this control network were determined by differential leveling techniques from NGS stations "C 14 173", "W 215", "V 215", "U 215", and "A 216".

Combined Scale Factor: 0.99994894

Edge of Pavement 30.5' N  
Edge of Pavement 26.8' W  
Water Manhole 24.7' SE

Set in grass area at the southeast corner of Robinson and NE 36th






# City of Norman

## Survey Control Monument Data Sheet

Date Printed: March 05, 2009

	Station No.: 377
	Monument Description: 3-1/2" Bronze Disc in Concrete
	Horizontal Datum - Oklahoma State Plane NAD83(CORS96), South Zone (U.S. Foot)
	Northing: 691,796.008
	Easting: 2,155,960.307
	Vertical Datum - NAVD 88 (U.S. Foot)
	Elevation: 1172.75
	Geodetic Coordinates
	North Latitude: 35° 13' 57.4384"
	West Longitude: 97° 22' 20.2854"
	Horizontal Control Statement: <i>The horizontal coordinates were derived from multiple static/rapid static GPS observations to NGS stations "PRCO", "OKDT", "OKTE", and "A-216".</i>
	Vertical Control Statement: <i>The elevations for this control network were determined by differential leveling techniques from NGS stations "C 14 173", "W 215", "V 215", "U 215", and "A 216".</i>
	Combined Scale Factor: 0.99994793
10" Steel Post 6.7' NW Power Pole 12.4' NE Edge of Pavement 25.6' N	Set in grass area south of Robinson +/- 600' west of NE 48th

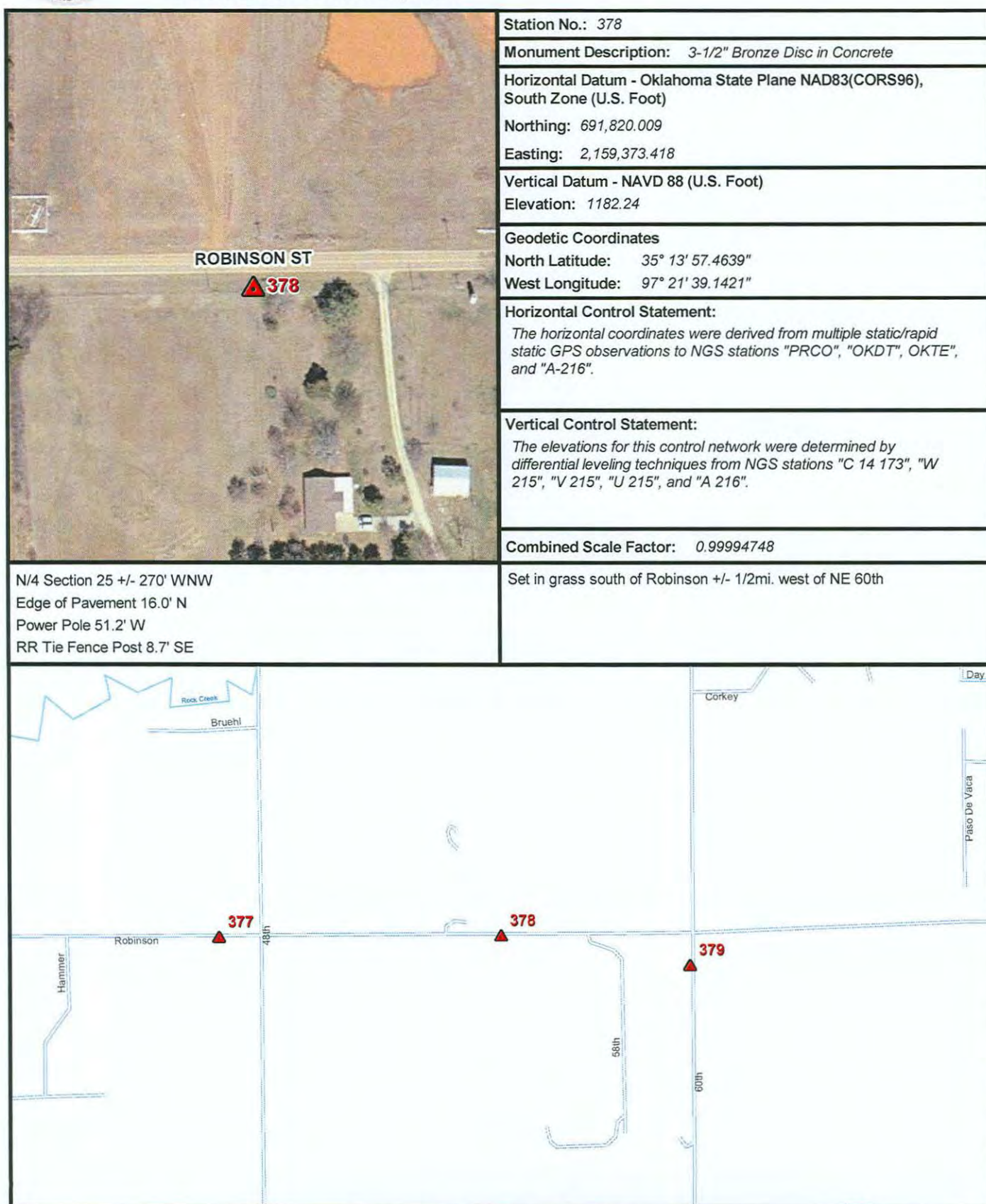




# City of Norman

## Survey Control Monument Data Sheet

Date Printed: March 05, 2009



Prepared by Lemke Land Surveying, Inc.



# City of Norman

## Survey Control Monument Data Sheet

Date Printed: March 05, 2009

379



Station No.: 379

Monument Description: 3-1/2" Bronze Disc in Concrete

Horizontal Datum - Oklahoma State Plane NAD83(CORS96), South Zone (U.S. Foot)

Northing: 691,457.394

Easting: 2,161,663.073

Vertical Datum - NAVD 88 (U.S. Foot)

Elevation: 1180.27

### Geodetic Coordinates

North Latitude: 35° 13' 53.7334"

West Longitude: 97° 21' 11.5707"

### Horizontal Control Statement:

The horizontal coordinates were derived from multiple static/rapid static GPS observations to NGS stations "PRCO", "OKDT", "OKTE", and "A-216".

### Vertical Control Statement:

The elevations for this control network were determined by differential leveling techniques from NGS stations "C 14 173", "W 215", "V 215", "U 215", and "A 216".

Combined Scale Factor: 0.99994737

Chainlink fence corner 7.1' NW

Power Pole 10.1' W

Power Pole 15.7' E

Set in grass west of NE 60th +/- 300' south of Robinson





# City of Norman

## Survey Control Monument Data Sheet

Date Printed: March 05, 2009

380



Station No.: 380
Monument Description: 3-1/2" Bronze Disc in Concrete
Horizontal Datum - Oklahoma State Plane NAD83(CORS96), South Zone (U.S. Foot)
Northing: 686,629.526
Easting: 2,161,575.125
Vertical Datum - NAVD 88 (U.S. Foot)
Elevation: 1147.93
Geodetic Coordinates
North Latitude: 35° 13' 5.9905"
West Longitude: 97° 21' 13.0035"
Horizontal Control Statement: <i>The horizontal coordinates were derived from multiple static/rapid static GPS observations to NGS stations "PRCO", "OKDT", "OKTE", and "A-216".</i>
Vertical Control Statement: <i>The elevations for this control network were determined by differential leveling techniques from NGS stations "C 14 173", "W 215", "V 215", "U 215", and "A 216".</i>
Combined Scale Factor: 0.99994632
Set in grass north of Alameda across from double driveway west of NE 60th

Edge of Pavement 8.5' S  
Chainlink fence 22.5' N  
Mailbox 62.0' SE





# City of Norman

## Survey Control Monument Data Sheet

Date Printed: March 05, 2009

381



Station No.: 381

Monument Description: 3-1/2" Bronze Disc in Concrete

Horizontal Datum - Oklahoma State Plane NAD83(CORS96), South Zone (U.S. Foot)

Northing: 686,573.371

Easting: 2,166,379.382

Vertical Datum - NAVD 88 (U.S. Foot)

Elevation: 1182.13

Geodetic Coordinates

North Latitude: 35° 13' 5.1270"

West Longitude: 97° 20' 15.1077"

Horizontal Control Statement:

The horizontal coordinates were derived from multiple static/rapid static GPS observations to NGS stations "PRCO", "OKDT", "OKTE", and "A-216".

Vertical Control Statement:

The elevations for this control network were determined by differential leveling techniques from NGS stations "C 14 173", "W 215", "V 215", "U 215", and "A 216".

Combined Scale Factor: 0.99994464

Edge of Pavement 45.0' N  
Power Pole 18.4' NE  
Retaining Wall 56.0' W

Set in grass south of Alameda +/- 400' west of NE 72nd



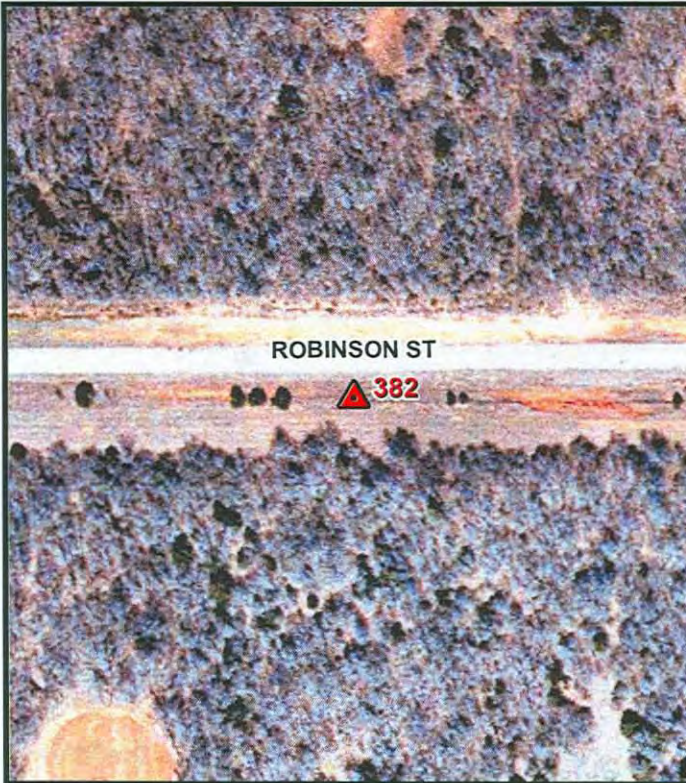


# City of Norman

## Survey Control Monument Data Sheet

Date Printed: March 05, 2009

382



Station No.: 382

Monument Description: 3-1/2" Bronze Disc in Concrete

Horizontal Datum - Oklahoma State Plane NAD83(CORS96), South Zone (U.S. Foot)

Northing: 691,871.504

Easting: 2,167,568.155

Vertical Datum - NAVD 88 (U.S. Foot)

Elevation: 1145.35

Geodetic Coordinates

North Latitude: 35° 13' 57.4490"

West Longitude: 97° 20' 0.3590"

Horizontal Control Statement:

The horizontal coordinates were derived from multiple static/rapid static GPS observations to NGS stations "PRCO", "OKDT", "OKTE", and "A-216".

Vertical Control Statement:

The elevations for this control network were determined by differential leveling techniques from NGS stations "C 14 173", "W 215", "V 215", "U 215", and "A 216".

Combined Scale Factor: 0.99994924

Edge of Pavement 19.5' N  
Barbed wire fence 8.6' S  
Standing PVC pipe 27.4' SW

Set in grass south of Robinson +/- 400' east of NE 72nd





# City of Norman

## Survey Control Monument Data Sheet

Date Printed: March 05, 2009

383



Station No.: 383

Monument Description: 3-1/2" Bronze Disc in Concrete

Horizontal Datum - Oklahoma State Plane NAD83(CORS96), South Zone (U.S. Foot)

Northing: 697,109.588

Easting: 2,166,897.079

Vertical Datum - NAVD 88 (U.S. Foot)

Elevation: 1160.80

### Geodetic Coordinates

North Latitude: 35° 14' 49.2980"

West Longitude: 97° 20' 8.0325"

### Horizontal Control Statement:

The horizontal coordinates were derived from multiple static/rapid static GPS observations to NGS stations "PRCO", "OKDT", "OKTE", and "A-216".

### Vertical Control Statement:

The elevations for this control network were determined by differential leveling techniques from NGS stations "C 14 173", "W 215", "V 215", "U 215", and "A 216".

Combined Scale Factor: 0.99995138

Edge of Pavement 12.4' W  
Fence corner 39.3' NE  
Fence 8.6' E

Set in grass at the southeast corner of intersection of NE 72nd and Rock Creek





# City of Norman

## Survey Control Monument Data Sheet

Date Printed: March 05, 2009

384



Station No.: 384

Monument Description: 3-1/2" Bronze Disc in Concrete

Horizontal Datum - Oklahoma State Plane NAD83(CORS96), South Zone (U.S. Foot)

Northing: 702,751.226

Easting: 2,166,845.760

Vertical Datum - NAVD 88 (U.S. Foot)

Elevation: 1054.81

### Geodetic Coordinates

North Latitude: 35° 15' 45.0974"

West Longitude: 97° 20' 8.2034"

### Horizontal Control Statement:

The horizontal coordinates were derived from multiple static/rapid static GPS observations to NGS stations "PRCO", "OKDT", "OKTE", and "A-216".

### Vertical Control Statement:

The elevation was determined by static GPS observations to NGS stations "PRCO", "OKDT", and "OKTE".

Combined Scale Factor: 0.99995962

Edge of Pavement 8.6' W

Fence 8.2' E

Power Pole 66.8' SW

Set in grass east of NE 72nd +/- 220' north of Tecumseh

