

# City of Norman

## Survey Control Monument Data Sheet

Date Printed: March 05, 2009

349



Station No.: 349

Monument Description: 3-1/2" Bronze Disc in Concrete

Horizontal Datum - Oklahoma State Plane NAD83(CORS96), South Zone (U.S. Foot)

Northing: 678,606.487

Easting: 2,136,836.603

Vertical Datum - NAVD 88 (U.S. Foot)

Elevation: 1158.63

### Geodetic Coordinates

North Latitude: 35° 11' 48.1069"

West Longitude: 97° 26' 11.6905"

### Horizontal Control Statement:

The horizontal coordinates were derived from multiple static/rapid static GPS observations to NGS stations "PRCO", "OKDT", "OKTE", and "A-216".

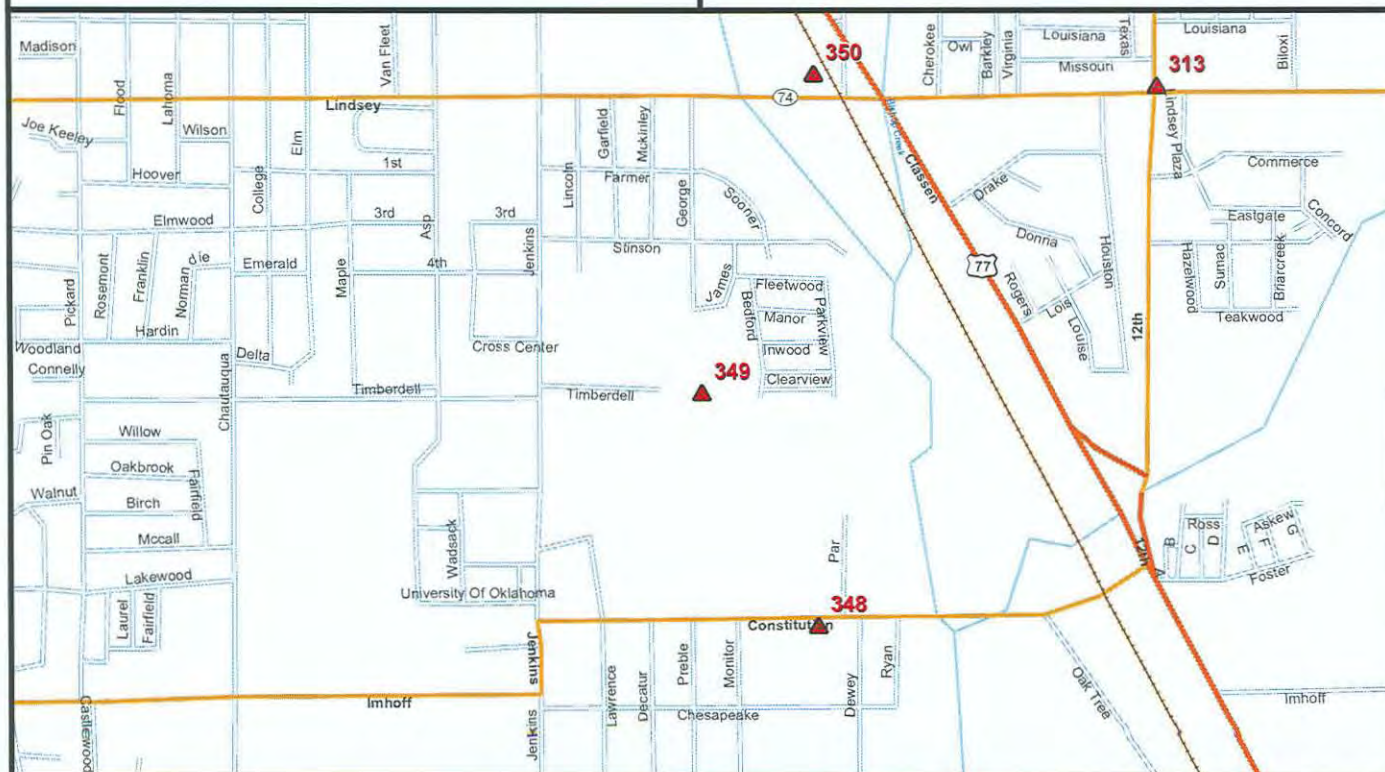
### Vertical Control Statement:

The elevations for this control network were determined by differential leveling techniques from NGS stations "C 14 173", "W 215", "V 215", "U 215", and "A 216".

Combined Scale Factor: 0.99994170

Chain link fence corner 18' ESE  
South end of pipe rail gate 18' W  
Water meter 33' NNW

Set in grass area at east end of Reaves Park access road. 5' south of centerline and 50' east of end of pavement



Prepared by Lemke Land Surveying, Inc.



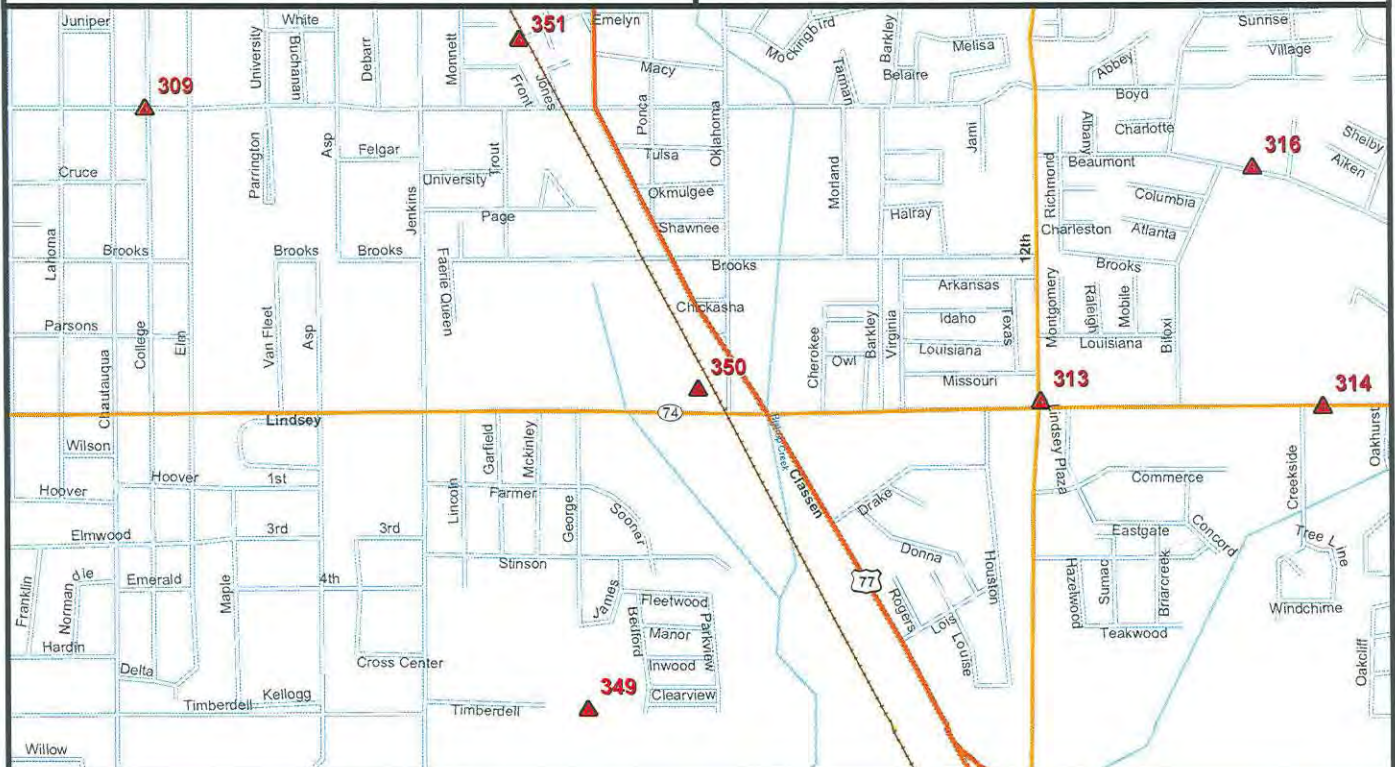
## Survey Control Monument Data Sheet

**Date Printed: March 05, 2009**



Power pole 61' NW  
RR track 30' NE  
Destroyed NGS monument 68' S

Set in grass north of Lindsey west of RR tracks







# City of Norman

## Survey Control Monument Data Sheet

Date Printed: March 05, 2009



Station No.: 351

Monument Description: 3-1/2" Bronze Disc in Concrete

Horizontal Datum - Oklahoma State Plane NAD83(CORS96), South Zone (U.S. Foot)

Northing: 684,410.238

Easting: 2,136,274.558

Vertical Datum - NAVD 88 (U.S. Foot)

Elevation: 1158.18

Geodetic Coordinates

North Latitude: 35° 12' 45.5387"

West Longitude: 97° 26' 18.0733"

Horizontal Control Statement:

The horizontal coordinates were derived from multiple static/rapid static GPS observations to NGS stations "PRCO", "OKDT", "OKTE", and "A-216".

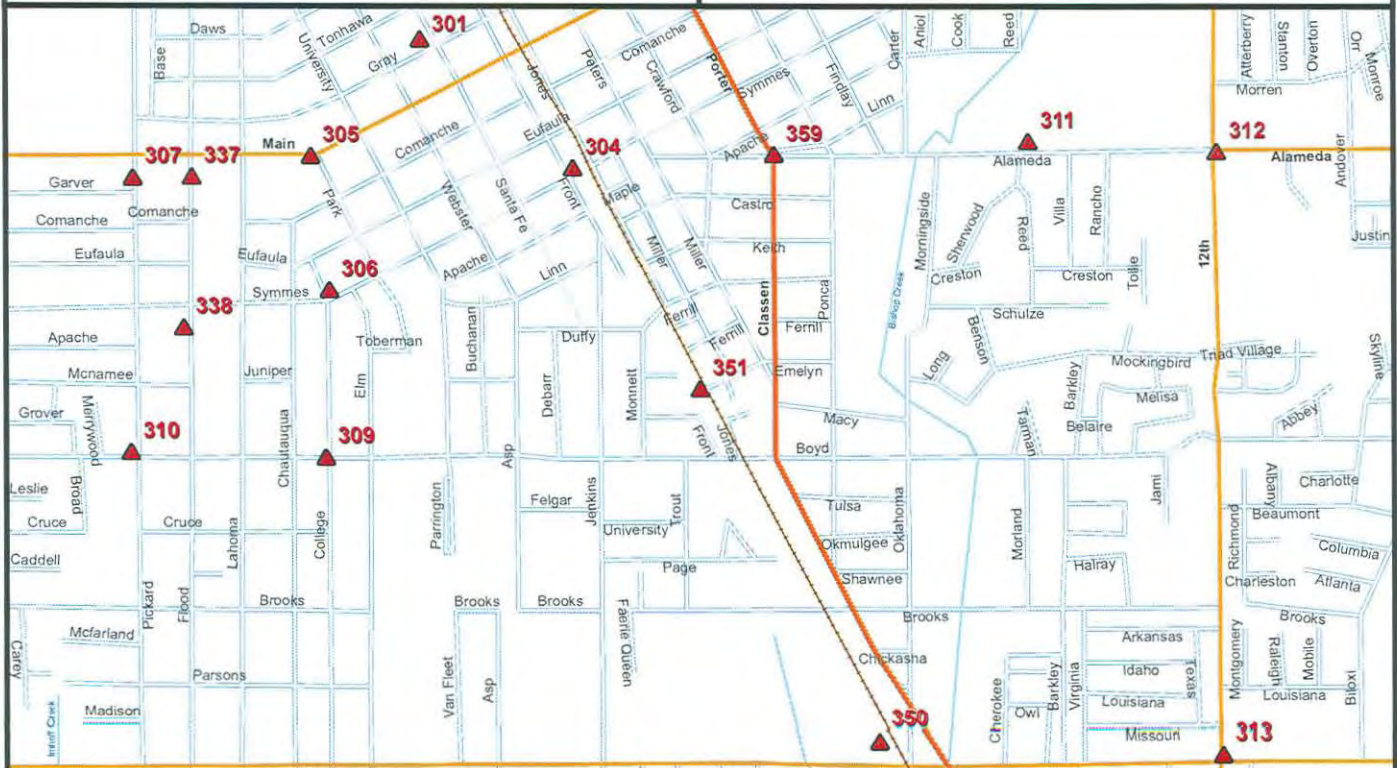
Vertical Control Statement:

The elevations for this control network were determined by differential leveling techniques from NGS stations "C 14 173", "W 215", "V 215", "U 215", and "A 216".

Combined Scale Factor: 0.99994474

RR track 27' SW  
West end of Emelyn 81' NE  
8" cedar tree 74' N

Set in grass area East side of RR tracks 7' south of centerline of Emelyn Street







# City of Norman

## Survey Control Monument Data Sheet

Date Printed: March 05, 2009



Station No.: 352

Monument Description: 3-1/2" Bronze Disc in Concrete

Horizontal Datum - Oklahoma State Plane NAD83(CORS96), South Zone (U.S. Foot)

Northing: 673,056.459

Easting: 2,140,740.227

Vertical Datum - NAVD 88 (U.S. Foot)

Elevation: 1144.12

### Geodetic Coordinates

North Latitude: 35° 10' 52.9973"

West Longitude: 97° 25' 25.0384"

### Horizontal Control Statement:

The horizontal coordinates were derived from multiple static/rapid static GPS observations to NGS stations "PRCO", "OKDT", "OKTE", and "A-216".

### Vertical Control Statement:

The elevations for this control network were determined by differential leveling techniques from NGS stations "C 14 173", "W 215", "V 215", "U 215", and "A 216".

Combined Scale Factor: 0.99993957

Signal pole 40' NW  
Power pole 50' SE  
Back of curb at PT 50' W

Set in grass at the southeast corner of intersection of SE 12th Street and Highway 9 at top of slope



Prepared by Lemke Land Surveying, Inc.



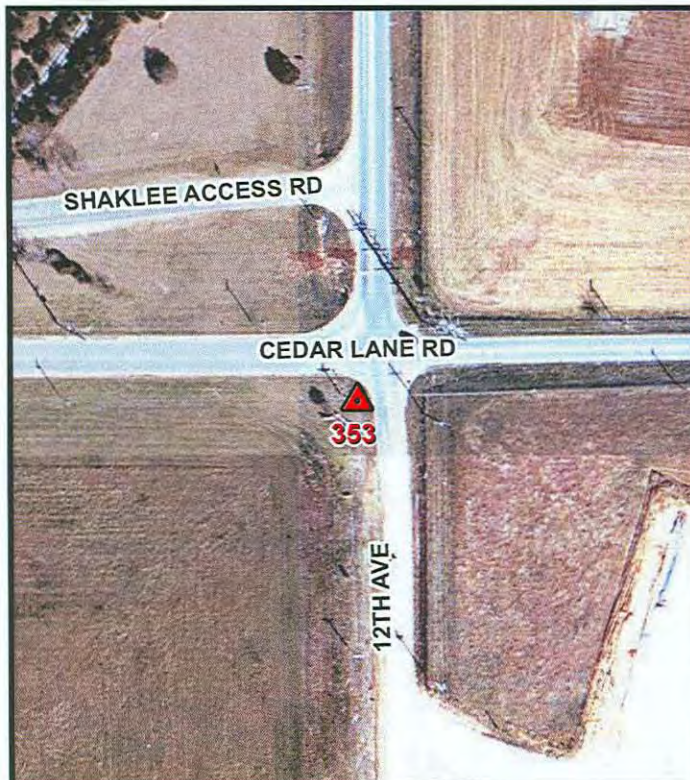


# City of Norman

## Survey Control Monument Data Sheet

Date Printed: March 05, 2009

353



Station No.: 353

Monument Description: 3-1/2" Bronze Disc in Concrete

Horizontal Datum - Oklahoma State Plane NAD83(CORS96), South Zone (U.S. Foot)

Northing: 670,722.993

Easting: 2,140,717.636

Vertical Datum - NAVD 88 (U.S. Foot)

Elevation: 1153.61

Geodetic Coordinates

North Latitude: 35° 10' 29.9197"

West Longitude: 97° 25' 25.4711"

Horizontal Control Statement:

The horizontal coordinates were derived from multiple static/rapid static GPS observations to NGS stations "PRCO", "OKDT", "OKTE", and "A-216".

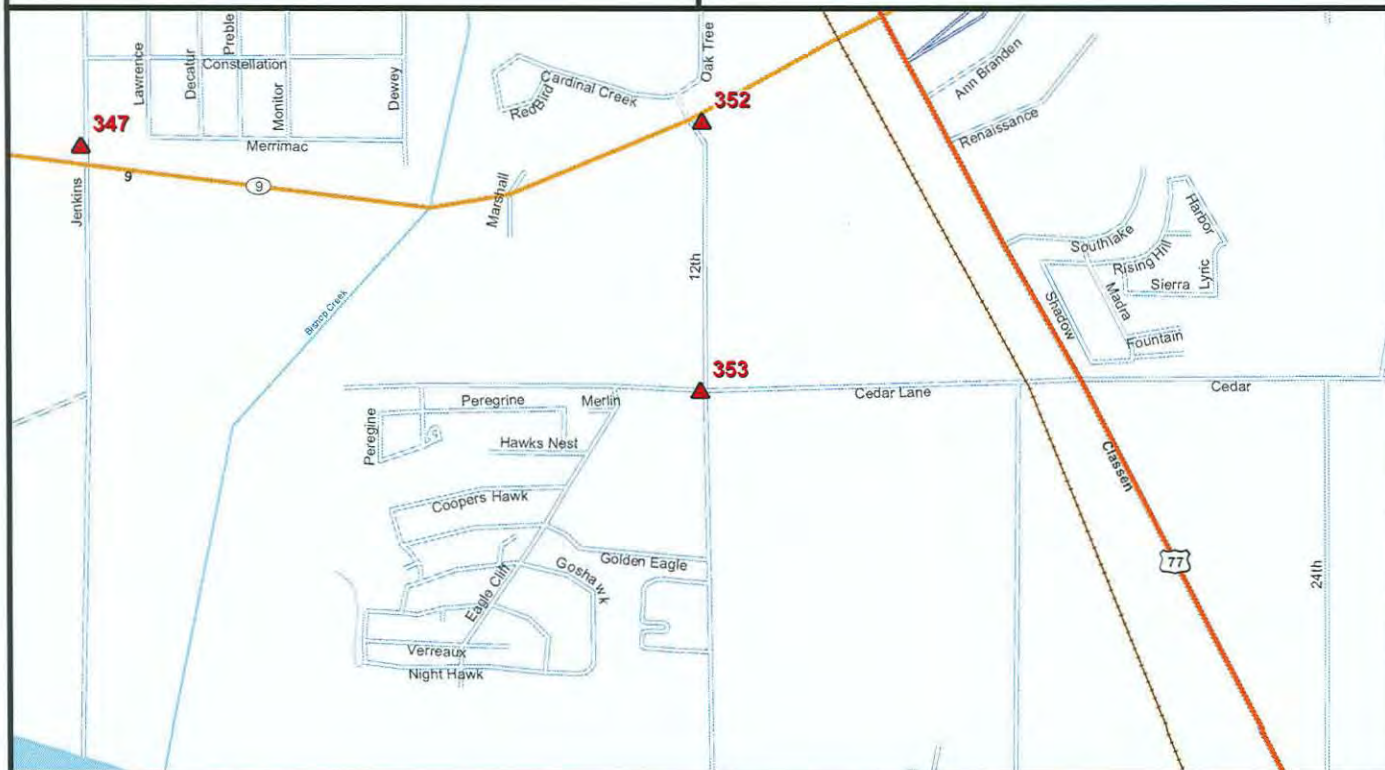
Vertical Control Statement:

The elevations for this control network were determined by differential leveling techniques from NGS stations "C 14 173", "W 215", "V 215", "U 215", and "A 216".

Combined Scale Factor: 0.99993795

Back of curb 9' E  
Cut "X" in curb 10' NNE  
Power pole 14' WNW

Set in grass at the southwest corner of intersection of SE 12th Street and Cedar Lane



Prepared by Lemke Land Surveying, Inc.





# City of Norman

## Survey Control Monument Data Sheet

Date Printed: March 05, 2009

354



Station No.: 354

Monument Description: 3-1/2" Bronze Disc in Concrete

Horizontal Datum - Oklahoma State Plane NAD83(CORS96), South Zone (U.S. Foot)

Northing: 674,515.296

Easting: 2,143,620.152

Vertical Datum - NAVD 88 (U.S. Foot)

Elevation: 1164.43

### Geodetic Coordinates

North Latitude: 35° 11' 7.2616"

West Longitude: 97° 24' 50.2432"

### Horizontal Control Statement:

The horizontal coordinates were derived from multiple static/rapid static GPS observations to NGS stations "PRCO", "OKDT", "OKTE", and "A-216".

### Vertical Control Statement:

The elevations for this control network were determined by differential leveling techniques from NGS stations "C 14 173", "W 215", "V 215", "U 215", and "A 216".

Combined Scale Factor: 0.99993932

Edge of paving 9' S  
Metal light pole 70' NW  
10" tree 95' NE

Set in grass area on the north side of Ann Branden Blvd. North of west entrance to Perfect Swing







# City of Norman

## Survey Control Monument Data Sheet

Date Printed: March 05, 2009



Station No.: 355

Monument Description: 3-1/2" Bronze Disc in Concrete

Horizontal Datum - Oklahoma State Plane NAD83(CORS96), South Zone (U.S. Foot)

Northing: 675,735.612

Easting: 2,145,971.868

Vertical Datum - NAVD 88 (U.S. Foot)

Elevation: 1186.28

### Geodetic Coordinates

North Latitude: 35° 11' 19.1950"

West Longitude: 97° 24' 21.8253"

### Horizontal Control Statement:

The horizontal coordinates were derived from multiple static/rapid static GPS observations to NGS stations "PRCO", "OKDT", "OKTE", and "A-216".

### Vertical Control Statement:

The elevations for this control network were determined by differential leveling techniques from NGS stations "C 14 173", "W 215", "V 215", "U 215", and "A 216".

Combined Scale Factor: 0.99993889

Cut "X" on traffic control box pad 20' NE  
Signal pole 17' S  
Telephone manhole 30' W

Set in grass area at the northwest corner of intersection of SE 24th and Highway 9







# City of Norman

## Survey Control Monument Data Sheet

Date Printed: March 05, 2009

356



Station No.: 356

Monument Description: 3-1/2" Bronze Disc in Concrete

Horizontal Datum - Oklahoma State Plane NAD83(CORS96), South Zone (U.S. Foot)

Northing: 689,133.285

Easting: 2,135,536.572

Vertical Datum - NAVD 88 (U.S. Foot)

Elevation: 1176.59

### Geodetic Coordinates

North Latitude: 35° 13' 32.2913"

West Longitude: 97° 26' 26.6515"

### Horizontal Control Statement:

The horizontal coordinates were derived from multiple static/rapid static GPS observations to NGS stations "PRCO", "OKDT", "OKTE", and "A-216".

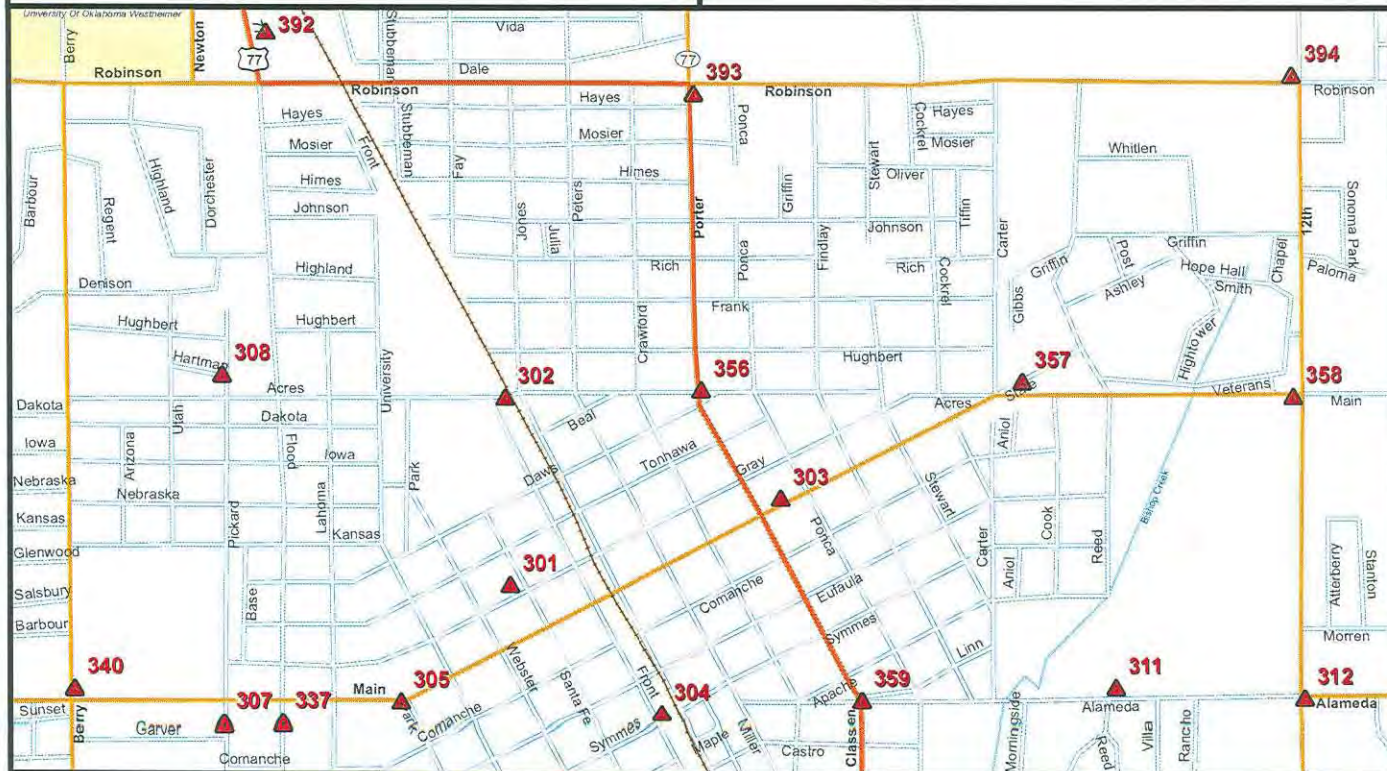
### Vertical Control Statement:

The elevations for this control network were determined by differential leveling techniques from NGS stations "C 14 173", "W 215", "V 215", "U 215", and "A 216".

Combined Scale Factor: 0.99994637

Bike route sign 4' N  
Stop sign 32' W

Set in grass of island east of Porter, in centerline of Acres



Prepared by Lemke Land Surveying, Inc.





# City of Norman

## Survey Control Monument Data Sheet

Date Printed: March 05, 2009

357



Station No.: 357

Monument Description: 3-1/2" Bronze Disc in Concrete

Horizontal Datum - Oklahoma State Plane NAD83(CORS96), South Zone (U.S. Foot)

Northing: 689,207.730

Easting: 2,138,292.341

Vertical Datum - NAVD 88 (U.S. Foot)

Elevation: 1178.40

### Geodetic Coordinates

North Latitude: 35° 13' 32.8753"

West Longitude: 97° 25' 53.4311"

### Horizontal Control Statement:

The horizontal coordinates were derived from multiple static/rapid static GPS observations to NGS stations "PRCO", "OKDT", "OKTE", and "A-216".

### Vertical Control Statement:

The elevations for this control network were determined by differential leveling techniques from NGS stations "C 14 173", "W 215", "V 215", "U 215", and "A 216".

Combined Scale Factor: 0.99994632

18" cedar tree 33' NE  
14" cedar tree 24' NW  
30" cedar tree 50' SW

Set in grass area between Main and State drive east of southwest entrance to Griffen Hospital







# City of Norman

## Survey Control Monument Data Sheet

Date Printed: March 05, 2009

358



Station No.: 358

Monument Description: 3-1/2" Bronze Disc in Concrete

Horizontal Datum - Oklahoma State Plane NAD83(CORS96), South Zone (U.S. Foot)

Northing: 689,082.761

Easting: 2,140,612.031

Vertical Datum - NAVD 88 (U.S. Foot)

Elevation: 1195.24

### Geodetic Coordinates

North Latitude: 35° 13' 31.5092"

West Longitude: 97° 25' 25.4805"

### Horizontal Control Statement:

The horizontal coordinates were derived from multiple static/rapid static GPS observations to NGS stations "PRCO", "OKDT", "OKTE", and "A-216".

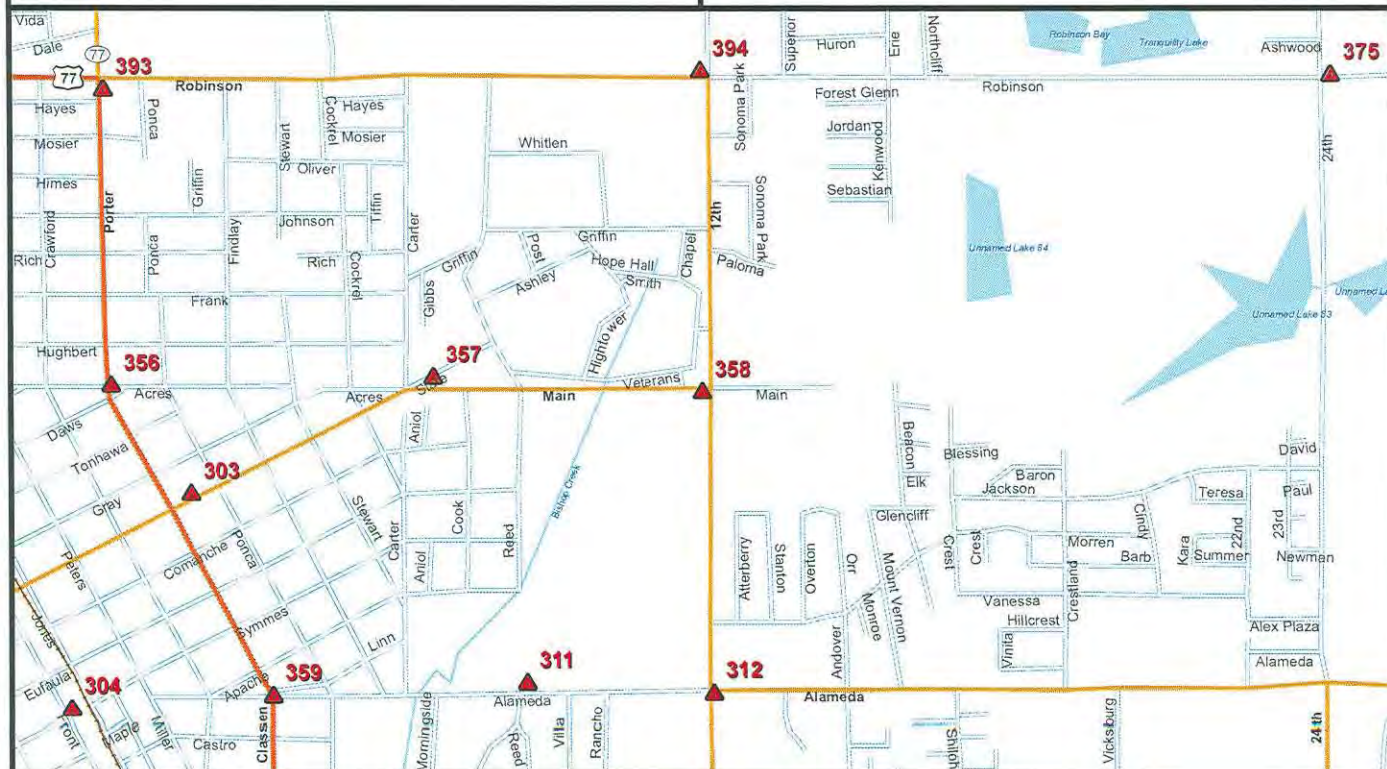
### Vertical Control Statement:

The elevations for this control network were determined by differential leveling techniques from NGS stations "C 14 173", "W 215", "V 215", "U 215", and "A 216".

Combined Scale Factor: 0.99994544

Set in grass area at the southwest corner of Main and NE 12th

Chain link fence corner 7' SW  
Edge of sidewalk 8' E  
Fire hydrant 30' NE



Prepared by Lemke Land Surveying, Inc.





# City of Norman

## Survey Control Monument Data Sheet

Date Printed: March 05, 2009

359



Station No.: 359

Monument Description: 3-1/2" Bronze Disc in Concrete

Horizontal Datum - Oklahoma State Plane NAD83(CORS96), South Zone (U.S. Foot)

Northing: 686,441.396

Easting: 2,136,910.737

Vertical Datum - NAVD 88 (U.S. Foot)

Elevation: 1163.48

### Geodetic Coordinates

North Latitude: 35° 13' 5.5923"

West Longitude: 97° 26' 10.2699"

### Horizontal Control Statement:

The horizontal coordinates were derived from multiple static/rapid static GPS observations to NGS stations "PRCO", "OKDT", "OKTE", and "A-216".

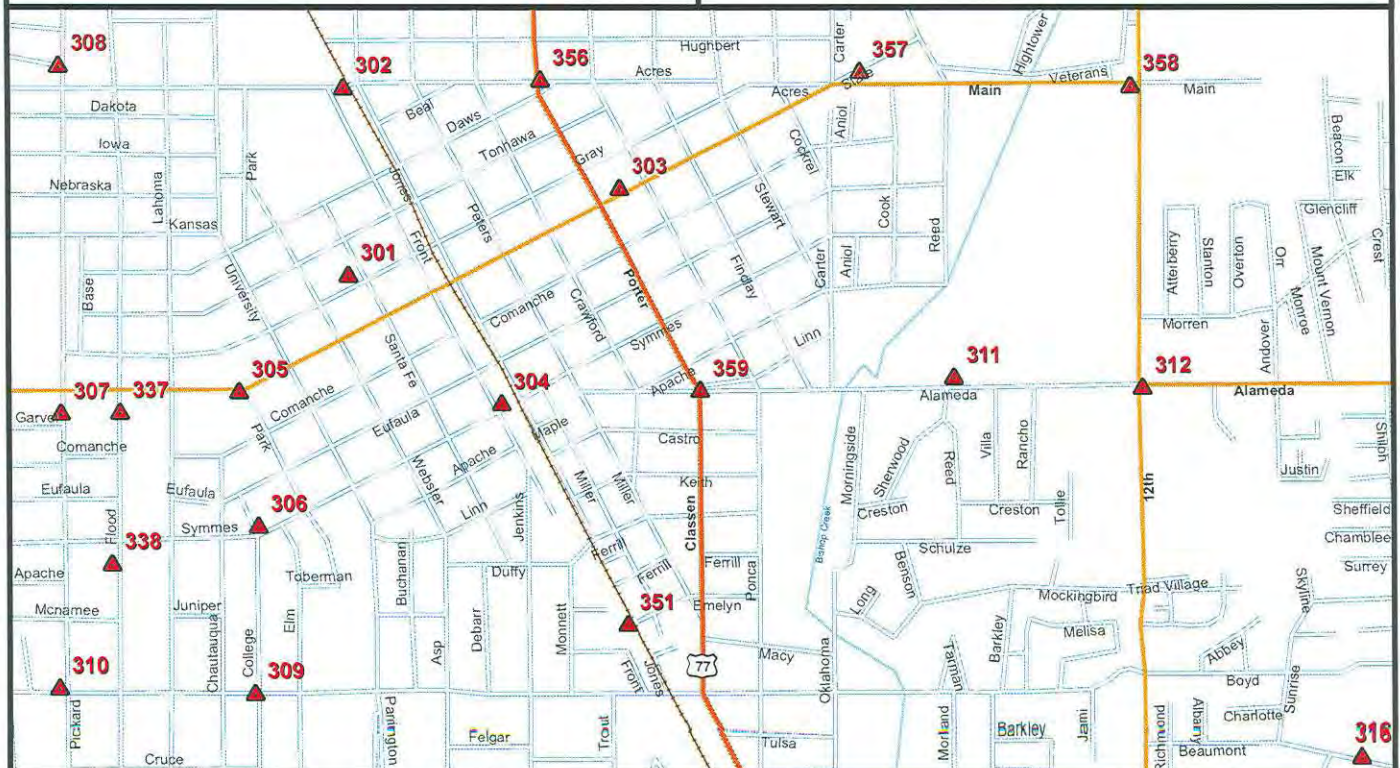
### Vertical Control Statement:

The elevations for this control network were determined by differential leveling techniques from NGS stations "C 14 173", "W 215", "V 215", "U 215", and "A 216".

Combined Scale Factor: 0.99994556

Signal pole 7' W  
Back of curb 11' N  
Sidewalk bend 26' SW

Set in grass area at southeast corner of Alameda and Classen



Prepared by Lemke Land Surveying, Inc.





# City of Norman

## Survey Control Monument Data Sheet

Date Printed: March 05, 2009

360



Station No.: 360

Monument Description: 3-1/2" Bronze Disc in Concrete

Horizontal Datum - Oklahoma State Plane NAD83(CORS96), South Zone (U.S. Foot)

Northing: 696,963.327

Easting: 2,135,292.382

Vertical Datum - NAVD 88 (U.S. Foot)

Elevation: 1178.75

### Geodetic Coordinates

North Latitude: 35° 14' 49.7452"

West Longitude: 97° 26' 29.0724"

### Horizontal Control Statement:

The horizontal coordinates were derived from multiple static/rapid static GPS observations to NGS stations "PRCO", "OKDT", "OKTE", and "A-216".

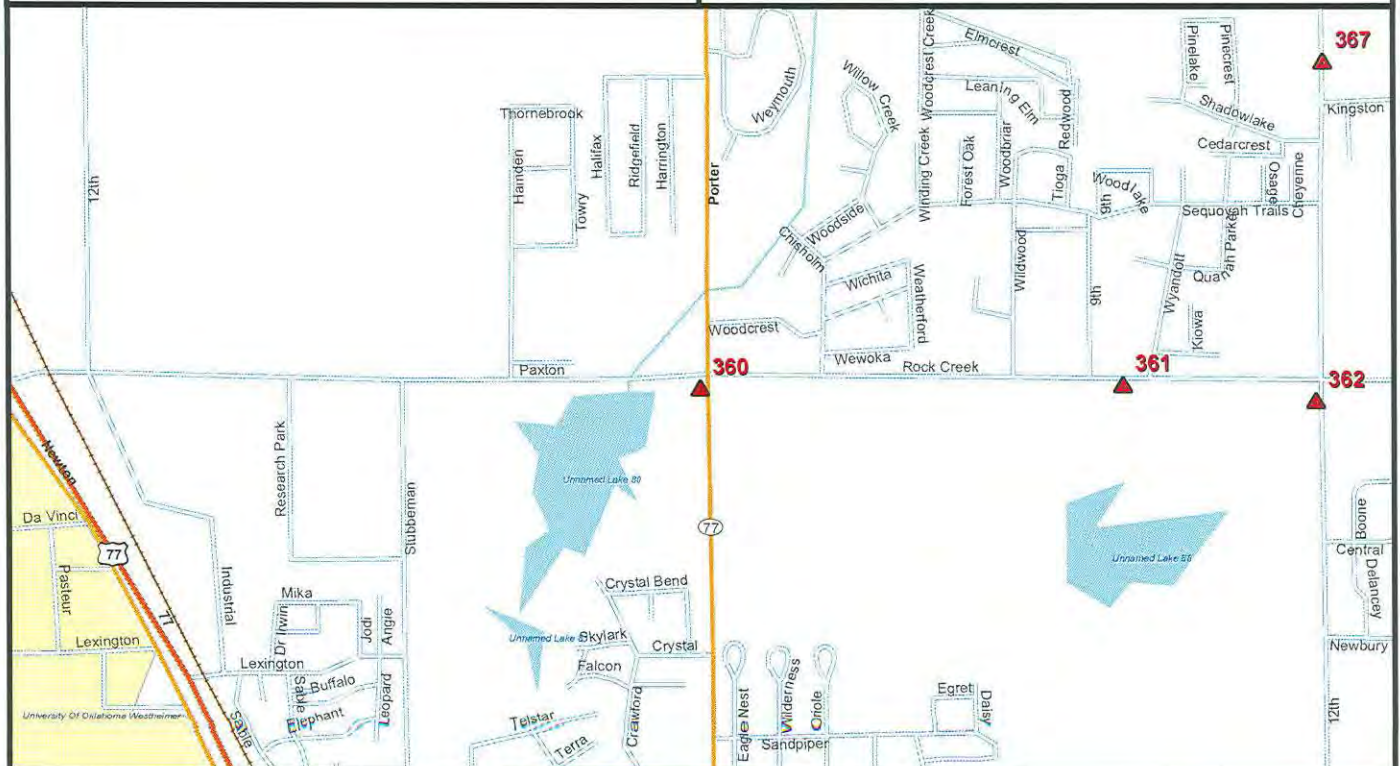
### Vertical Control Statement:

The elevations for this control network were determined by differential leveling techniques from NGS stations "C 14 173", "W 215", "V 215", "U 215", and "A 216".

Combined Scale Factor: 0.99995055

Edge of sidewalk 10' E  
Power pole 17' NE  
Hospital sign 36' SSE

Set in grass area at the southwest corner of Rock Creek and Porter



Prepared by Lemke Land Surveying, Inc.