



City of Norman

Survey Control Monument Data Sheet

Date Printed: March 05, 2009

337



Station No.: 337

Monument Description: 3-1/2" Bronze Disc in Concrete

Horizontal Datum - Oklahoma State Plane NAD83(CORS96), South Zone (U.S. Foot)

Northing: 686,245.669

Easting: 2,131,925.163

Vertical Datum - NAVD 88 (U.S. Foot)

Elevation: 1159.29

Geodetic Coordinates

North Latitude: 35° 13' 3.9278"

West Longitude: 97° 27' 10.3685"

Horizontal Control Statement:

The horizontal coordinates were derived from multiple static/rapid static GPS observations to NGS stations "PRCO", "OKDT", "OKTE", and "A-216".

Vertical Control Statement:

The elevations for this control network were determined by differential leveling techniques from NGS stations "C 14 173", "W 215", "U 215", and "A 216".

Combined Scale Factor: 0.99994567

Sidewalk 12' W

Chain link fence 23' N

No parking sign 13' WNW

Set in grass on east side of Flood, 200' south of Main



Prepared by Lemke Land Surveying, Inc.



City of Norman

Survey Control Monument Data Sheet

Date Printed: March 05, 2009



Station No.: 338

Monument Description: 3-1/2" Bronze Disc in Concrete

Horizontal Datum - Oklahoma State Plane NAD83(CORS96), South Zone (U.S. Foot)

Northing: 684,934.468

Easting: 2,131,854.181

Vertical Datum - NAVD 88 (U.S. Foot)

Elevation: 1148.18

Geodetic Coordinates

North Latitude: 35° 12' 50.9635"

West Longitude: 97° 27' 11.3096"

Horizontal Control Statement:

The horizontal coordinates were derived from multiple static/rapid static GPS observations to NGS stations "PRCO", "OKDT", "OKTE", and "A-216".

Vertical Control Statement:

The elevations for this control network were determined by differential leveling techniques from NGS stations "C 14 173", "W 215", "V 215", "U 215", and "A 216".

Combined Scale Factor: 0.99994551

E corner of Lions Park sign 7' NW

Speed limit sign 16' NE

W edge of sidewalk 3.5' E

Set in grass west side of Flood, west of sidewalk, 200' south of Symmes, 100' north of drainage flume





City of Norman

Survey Control Monument Data Sheet

Date Printed: March 05, 2009

339



Station No.: 339

Monument Description: 3-1/2" Bronze Disc in Concrete

Horizontal Datum - Oklahoma State Plane NAD83(CORS96), South Zone (U.S. Foot)

Northing: 684,152.691

Easting: 2,130,097.457

Vertical Datum - NAVD 88 (U.S. Foot)

Elevation: 1159.41

Geodetic Coordinates

North Latitude: 35° 12' 43.3252"

West Longitude: 97° 27' 32.5310"

Horizontal Control Statement:

The horizontal coordinates were derived from multiple static/rapid static GPS observations to NGS stations "PRCO", "OKDT", "OKTE", and "A-216".

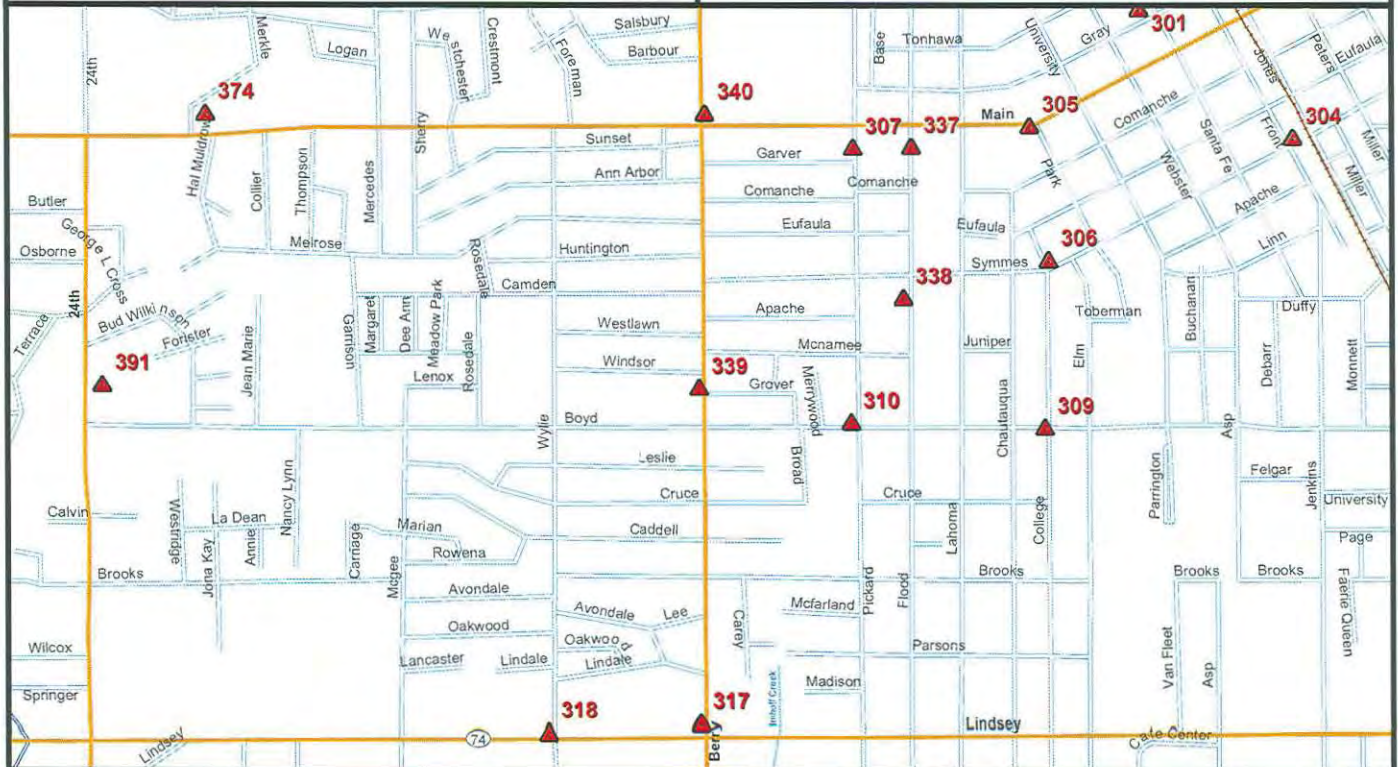
Vertical Control Statement:

The elevations for this control network were determined by differential leveling techniques from NGS stations "C 14 173", "W 215", "V 215", "U 215", and "A 216".

Combined Scale Factor: 0.99994456

Sidewalk 3' W
Back of curb 6' E
Sewer manhole 19' NW

Set in grass west side of Berry, between curb and sidewalk, 300' north of Boyd



Prepared by Lemke Land Surveying, Inc.



City of Norman

Survey Control Monument Data Sheet

Date Printed: March 05, 2009

340



Station No.: 340

Monument Description: 3-1/2" Bronze Disc in Concrete

Horizontal Datum - Oklahoma State Plane NAD83(CORS96), South Zone (U.S. Foot)

Northing: 686,534.361

Easting: 2,130,152.084

Vertical Datum - NAVD 88 (U.S. Foot)

Elevation: 1162.58

Geodetic Coordinates

North Latitude: 35° 13' 6.8776"

West Longitude: 97° 27' 31.7187"

Horizontal Control Statement:

The horizontal coordinates were derived from multiple static/rapid static GPS observations to NGS stations "PRCO", "OKDT", "OKTE", and "A-216".

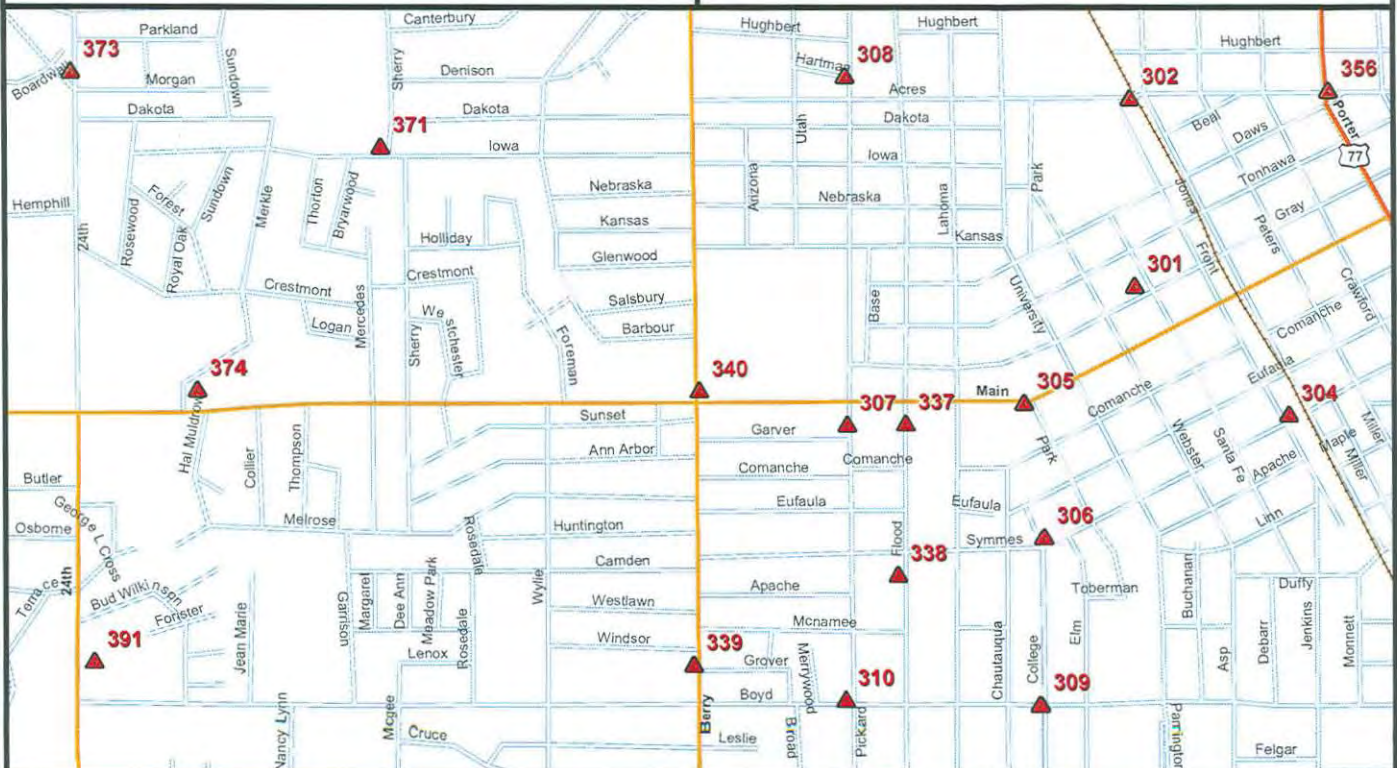
Vertical Control Statement:

The elevations for this control network were determined by differential leveling techniques from NGS stations "C 14 173", "W 215", "V 215", "U 215", and "A 216".

Combined Scale Factor: 0.99994567

Back of curb 19.5' S
Cut "X" in curb 22' W
Signal pole 13' NW

Set in grass area, north of sidewalk at the northeast corner of Berry and Main





City of Norman

Survey Control Monument Data Sheet

Date Printed: March 05, 2009

341



Station No.: 341

Monument Description: 3-1/2" Bronze Disc in Concrete

Horizontal Datum - Oklahoma State Plane NAD83(CORS96), South Zone (U.S. Foot)

Northing: 676,690.671

Easting: 2,124,785.293

Vertical Datum - NAVD 88 (U.S. Foot)

Elevation: 1106.38

Geodetic Coordinates

North Latitude: 35° 11' 29.8004"

West Longitude: 97° 28' 37.0141"

Horizontal Control Statement:

The horizontal coordinates were derived from multiple static/rapid static GPS observations to NGS stations "PRCO", "OKDT", "OKTE", and "A-216".

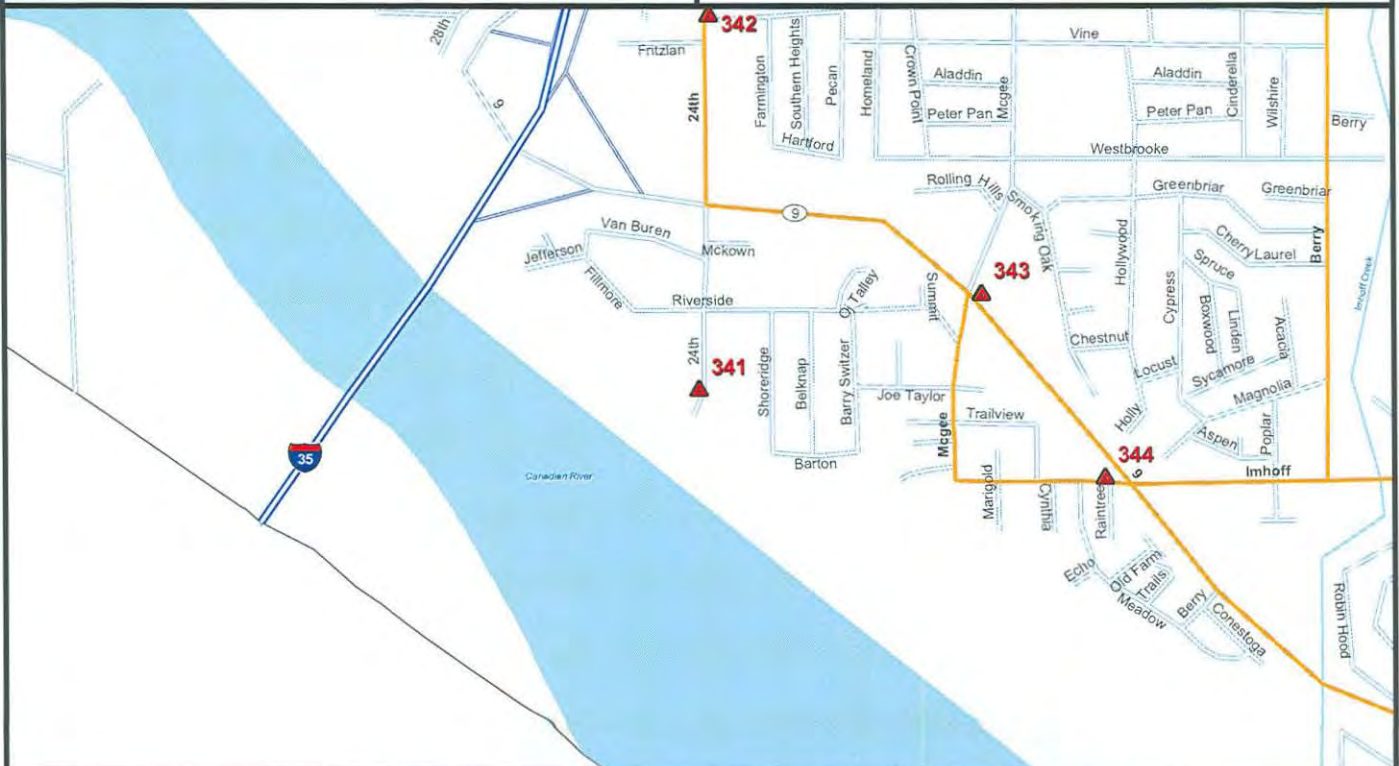
Vertical Control Statement:

The elevations for this control network were determined by differential leveling techniques from NGS stations "C 14 173", "W 215", "V 215", "U 215", and "A 216".

Combined Scale Factor: 0.99994325

Corner of asphalt parking area 21' NW
Pipe rail fence corner 25' NNW
60d in power pole 35.6' SE

Set in the southwest corner of Adkins Crossing Park, where SW 24th turns into Riverside Church drive



City of Norman

Survey Control Monument Data Sheet

Date Printed: March 05, 2009



Station No.: 342

Monument Description: 3-1/2" Bronze Disc in Concrete

Horizontal Datum - Oklahoma State Plane NAD83(CORS96), South Zone (U.S. Foot)

Northing: 679,937.161

Easting: 2,124,883.154

Vertical Datum - NAVD 88 (U.S. Foot)

Elevation: 1158.36

Geodetic Coordinates

North Latitude: 35° 12' 1.9042"

West Longitude: 97° 28' 35.6322"

Horizontal Control Statement:

The horizontal coordinates were derived from multiple static/rapid static GPS observations to NGS stations "PRCO", "OKDT", "OKTE", and "A-216".

Vertical Control Statement:

The elevations for this control network were determined by differential leveling techniques from NGS stations "C 14 173", "W 215", "V 215", "U 215", and "A 216".

Combined Scale Factor: 0.99994243

Back of curb 6.1' W
Edge of sidewalk 6.2' E
Sewer manhole 24.7' N

Set in grass area at the southeast corner of SW 24th and Beverly Hills



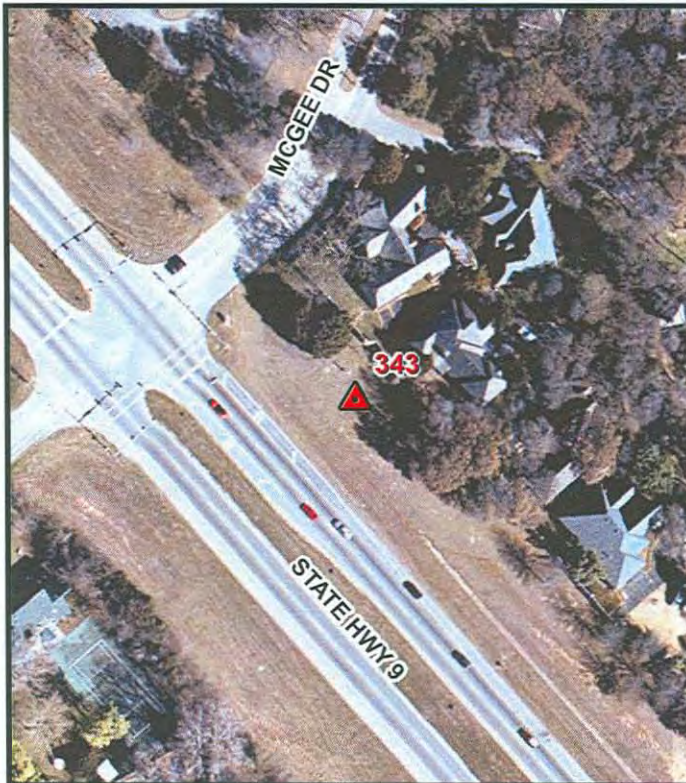


City of Norman

Survey Control Monument Data Sheet

Date Printed: March 05, 2009

343



Station No.: 343

Monument Description: 3-1/2" Bronze Disc in Concrete

Horizontal Datum - Oklahoma State Plane NAD83(CORS96), South Zone (U.S. Foot)

Northing: 677,522.961

Easting: 2,127,211.646

Vertical Datum - NAVD 88 (U.S. Foot)

Elevation: 1164.94

Geodetic Coordinates

North Latitude: 35° 11' 37.9067"

West Longitude: 97° 28' 7.7285"

Horizontal Control Statement:

The horizontal coordinates were derived from multiple static/rapid static GPS observations from NGS stations "PRCO", "OKDT", "OKTE", and "A-216".

Vertical Control Statement:

The elevations for this control network were determined by differential leveling techniques from NGS stations "C 14 173", "W 215", "V 215", "U 215", and "A 216".

Combined Scale Factor: 0.99994087

Hunt club sign 27' NE
26" cedar tree 50' NW
30" oak tree 40' SE

Set in grass east of the intersection of State Highway no. 9 and McGee





City of Norman

Survey Control Monument Data Sheet
Date Printed: March 05, 2009

344



Station No.: 344

Monument Description: 3-1/2" Bronze Disc in Concrete

Horizontal Datum - Oklahoma State Plane NAD83(CORS96), South Zone (U.S. Foot)

Northing: 675,929.018

Easting: 2,128,257.379

Vertical Datum - NAVD 88 (U.S. Foot)

Elevation: 1138.94

Geodetic Coordinates

North Latitude: 35° 11' 22.0874"

West Longitude: 97° 27' 55.2308"

Horizontal Control Statement:

The horizontal coordinates were derived from multiple static/rapid static GPS observations to NGS stations "PRCO", "OKDT", "OKTE", and "A-216".

Vertical Control Statement:

The elevations for this control network were determined by differential leveling techniques from NGS stations "C 14 173", "W 215", "V 215", "U 215", and "A 216".

Combined Scale Factor: 0.99994130

Chain link fence corner 18.5' NE
Fiber optic line marker 9.5' W
Back of curb 12.4' S

Set in grass approximately 300' west of intersection of State Highway no. 9 and Imhoff





City of Norman

Survey Control Monument Data Sheet

Date Printed: March 05, 2009

345



Station No.: 345

Monument Description: 3-1/2" Bronze Disc in Concrete

Horizontal Datum - Oklahoma State Plane NAD83(CORS96), South Zone (U.S. Foot)

Northing: 670,855.922

Easting: 2,132,814.227

Vertical Datum - NAVD 88 (U.S. Foot)

Elevation: 1090.71

Geodetic Coordinates

North Latitude: 35° 10' 31.6704"

West Longitude: 97° 27' 0.6640"

Horizontal Control Statement:

The horizontal coordinates were derived from multiple static/rapid static GPS observations to NGS stations "PRCO", "OKDT", "OKTE", and "A-216".

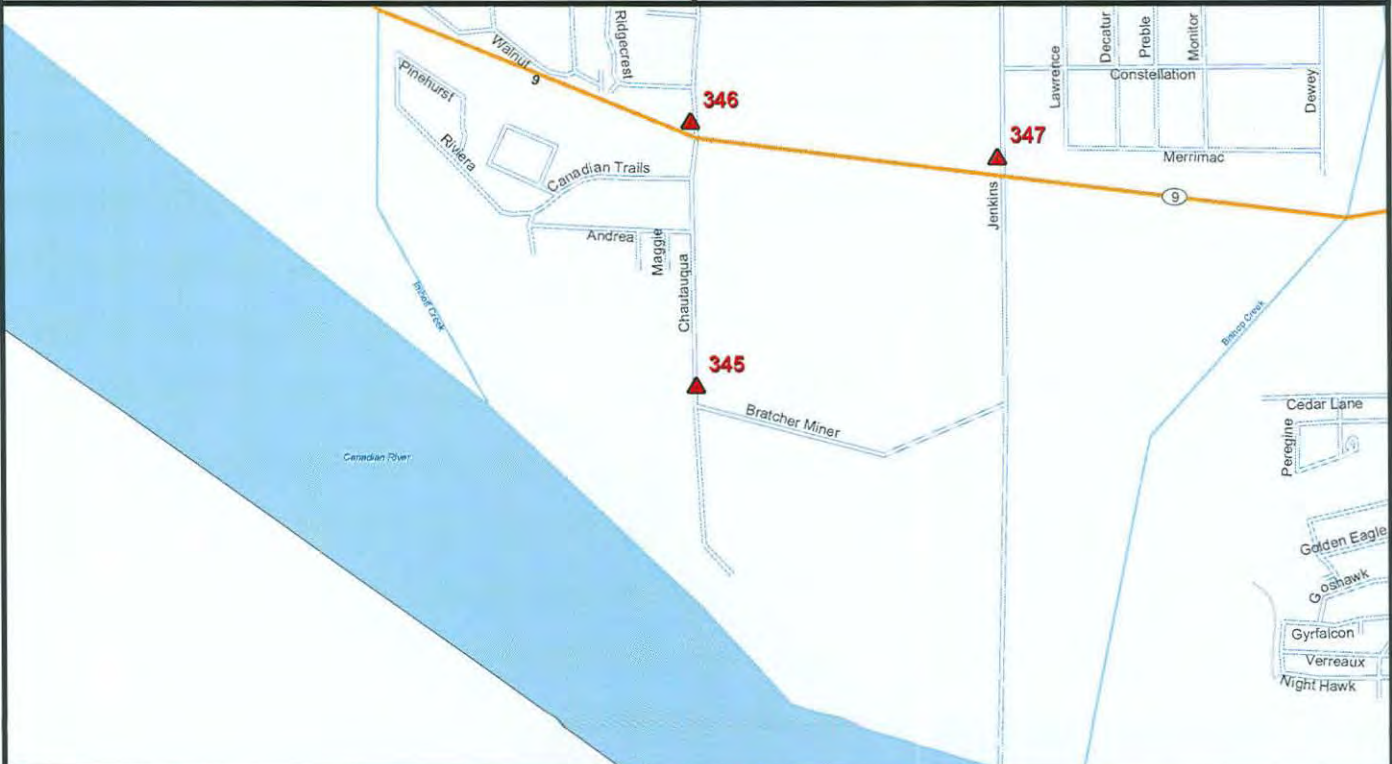
Vertical Control Statement:

The elevations for this control network were determined by differential leveling techniques from NGS stations "C 14 173", "W 215", "V 215", "U 215", and "A 216".

Combined Scale Factor: 0.99994105

Edge of asphalt 8.4' W
Chain link fence 6.9' E
60d in power pole 29.6' SSE

Set in grass east of Chautauqua 1/2 mile south of intersection of Chautauqua and State Highway no. 9





City of Norman

Survey Control Monument Data Sheet

Date Printed: March 05, 2009

346



Station No.: 346

Monument Description: 3-1/2" Bronze Disc in Concrete

Horizontal Datum - Oklahoma State Plane NAD83(CORS96), South Zone (U.S. Foot)

Northing: 673,151.759

Easting: 2,132,774.487

Vertical Datum - NAVD 88 (U.S. Foot)

Elevation: 1123.71

Geodetic Coordinates

North Latitude: 35° 10' 54.3793"

West Longitude: 97° 27' 0.9920"

Horizontal Control Statement:

The horizontal coordinates were derived from multiple static/rapid static GPS observations to NGS stations "PRCO", "OKDT", "OKTE", and "A-216".

Vertical Control Statement:

The elevations for this control network were determined by differential leveling techniques from NGS stations "C 14 173", "W 215", "V 215", "U 215", and "A 216".

Combined Scale Factor: 0.99994062

Signal pole 15.2' NW
Back of curb 22.2' N
Back of curb 23.3' W
Back of curb 19.7' E

Set in grass in southwest island of intersection of Chautauqua and State Highway no. 9





City of Norman

Survey Control Monument Data Sheet

Date Printed: March 05, 2009



Station No.: 347

Monument Description: 3-1/2" Bronze Disc in Concrete

Horizontal Datum - Oklahoma State Plane NAD83(CORS96), South Zone (U.S. Foot)

Northing: 672,843.783

Easting: 2,135,409.530

Vertical Datum - NAVD 88 (U.S. Foot)

Elevation: 1135.95

Geodetic Coordinates

North Latitude: 35° 10' 51.1902"

West Longitude: 97° 26' 29.2692"

Horizontal Control Statement:

The horizontal coordinates were derived from multiple static/rapid static GPS observations to NGS stations "PRCO", "OKDT", "OKTE", and "A-216".

Vertical Control Statement:

The elevations for this control network were determined by differential leveling techniques from NGS stations "C 14 173", "W 215", "V 215", "U 215", and "A 216".

Combined Scale Factor: 0.99993987

Back of curb 3' E
Back of curb 10' W
Cut "X" in top of curb 17' N

Set in grass in north end of northwest island of intersection of Jenkins and State Highway no. 9





City of Norman

Survey Control Monument Data Sheet

Date Printed: March 05, 2009

348



Station No.: 348

Monument Description: 3-1/2" Bronze Disc in Concrete

Horizontal Datum - Oklahoma State Plane NAD83(CORS96), South Zone (U.S. Foot)

Northing: 676,589.608

Easting: 2,137,831.292

Vertical Datum - NAVD 88 (U.S. Foot)

Elevation: 1135.53

Geodetic Coordinates

North Latitude: 35° 11' 28.1042"

West Longitude: 97° 25' 59.8421"

Horizontal Control Statement:

The horizontal coordinates were derived from multiple static/rapid static GPS observations to NGS stations "PRCO", "OKDT", "OKTE", and "A-216".

Vertical Control Statement:

The elevations for this control network were determined by differential leveling techniques from NGS stations "C 14 173", "W 215", "V 215", "U 215", and "A 216".

Combined Scale Factor: 0.99994177

Edge of sidewalk 3.5' N

18" pine tree 45' SSW

12" cedar tree 50' SSE

Set in grass area south of sidewalk on the south side of Constitution 90' west of Par Drive

