



City of Norman

Survey Control Monument Data Sheet

Date Printed: March 05, 2009



Station No.: 301

Monument Description: 3-1/2" Bronze Disc in Concrete

Horizontal Datum - Oklahoma State Plane NAD83(CORS96), South Zone (U.S. Foot)

Northing: 687,438.907

Easting: 2,133,881.030

Vertical Datum - NAVD 88 (U.S. Foot)

Elevation: 1168.20

Geodetic Coordinates

North Latitude: 35° 13' 15.6238"

West Longitude: 97° 26' 46.7178"

Horizontal Control Statement:

The horizontal coordinates were derived from multiple static/rapid static GPS observations to NGS stations "PRCO", "OKDT", "OKTE", and "A-216".

Vertical Control Statement:

The elevations for this control network were determined by differential leveling techniques from NGS stations "C 14 173", "W 215", "V 215", "U 215", and "A 216".

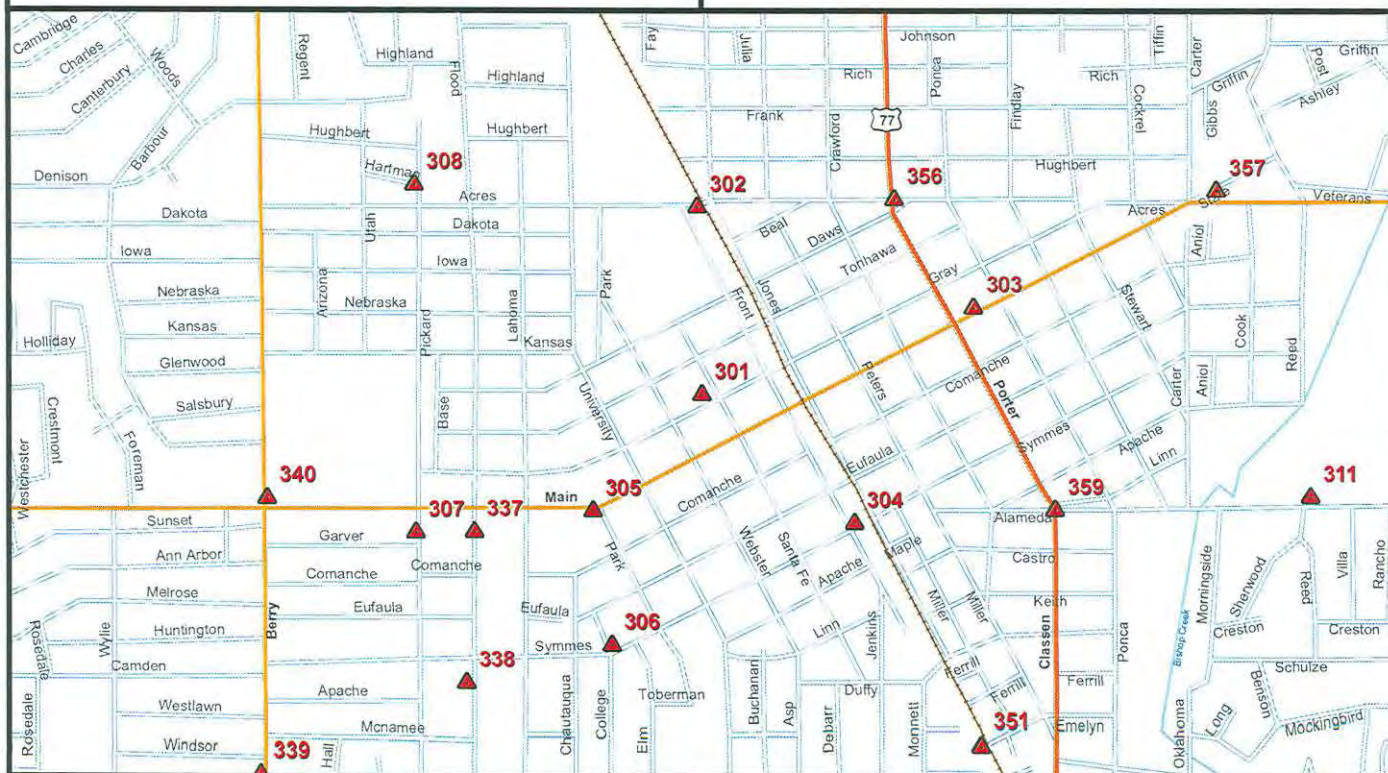
Combined Scale Factor: 0.99994587

Sign 14.9' NW

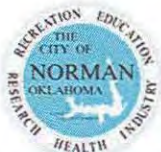
15" Live Oak Tree 36.3' W

Back of curb 22.2' SE

Set 0.2' deep in grass area between the sidewalk and the north curb line of Gray Street. South of "Norman Municipal Complex" sign. Monument is even with the "Abner Norman" statue.



Prepared by Lemke Land Surveying, Inc.



City of Norman

Survey Control Monument Data Sheet

Date Printed: March 05, 2009

302



Station No.: 302

Monument Description: 3-1/2" Bronze Disc in Concrete

Horizontal Datum - Oklahoma State Plane NAD83(CORS96), South Zone (U.S. Foot)

Northing: 689,066.335

Easting: 2,133,843.135

Vertical Datum - NAVD 88 (U.S. Foot)

Elevation: 1174.85

Geodetic Coordinates

North Latitude: 35° 13' 31.7215"

West Longitude: 97° 26' 47.0669"

Horizontal Control Statement:

The horizontal coordinates were derived from multiple static/rapid static GPS observations to NGS stations "PRCO", "OKDT", "OKTE", and "A-216".

Vertical Control Statement:

The elevations for this control network were determined by differential leveling techniques from NGS stations "C 14 173", "W 215", "V 215", "U 215", and "A 216".

Combined Scale Factor: 0.99994642

RR Control Box 33.0' WNW
East Rail of RR 41.1' SW
Edge of sidewalk 22.2' NE
3" Cypress Tree 24.7' SE

Set East of railroad tracks, west of Jones Avenue, and South of Acres Street.



Prepared by Lemke Land Surveying, Inc.



City of Norman

Survey Control Monument Data Sheet

Date Printed: March 05, 2009



Station No.: 303

Monument Description: 3-1/2" Bronze Disc in Concrete

Horizontal Datum - Oklahoma State Plane NAD83(CORS96), South Zone (U.S. Foot)

Northing: 688,192.113

Easting: 2,136,215.572

Vertical Datum - NAVD 88 (U.S. Foot)

Elevation: 1170.71

Geodetic Coordinates

North Latitude: 35° 13' 22.9456"

West Longitude: 97° 26' 18.5306"

Horizontal Control Statement:

The horizontal coordinates were derived from multiple static/rapid static GPS observations to NGS stations "PRCO", "OKDT", "OKTE", and "A-216".

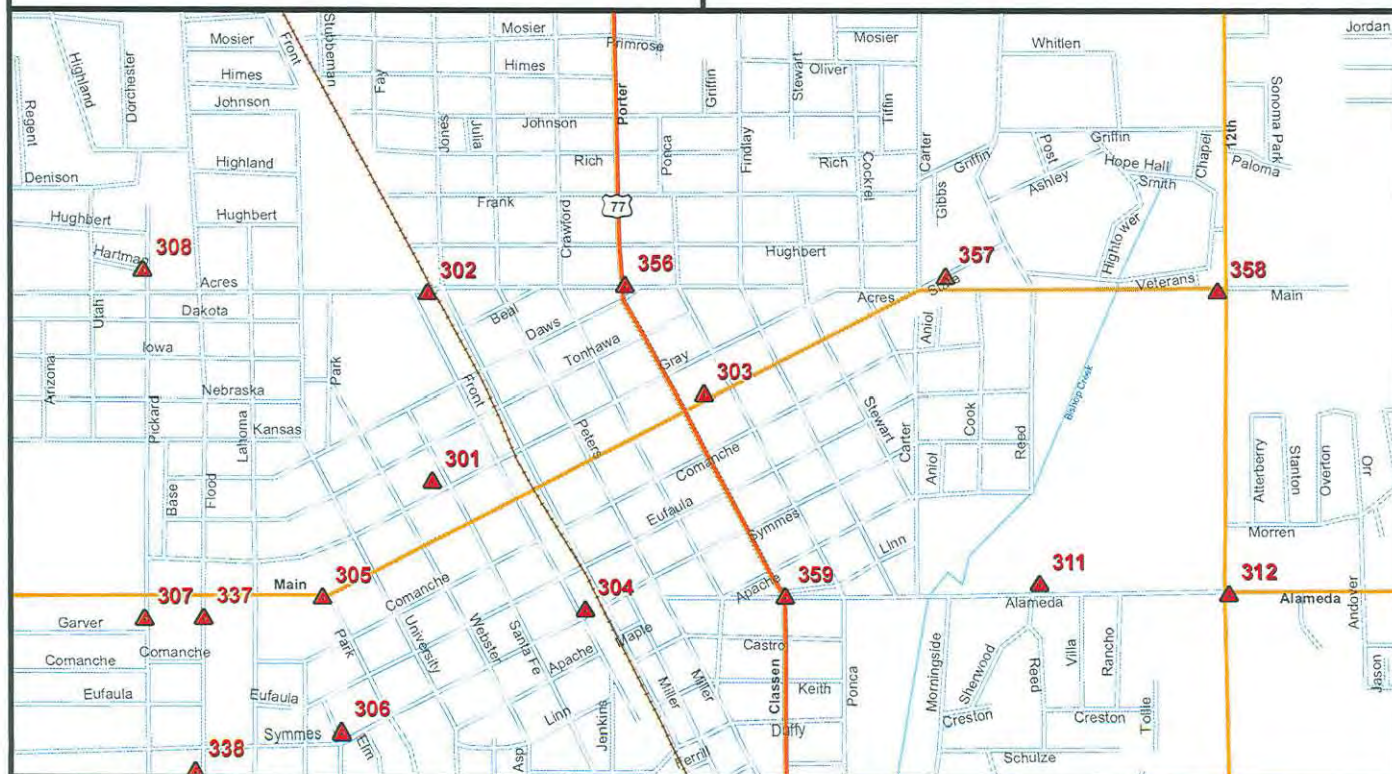
Vertical Control Statement:

The elevations for this control network were determined by differential leveling techniques from NGS stations "C 14 173", "W 215", "V 215", "U 215", and "A 216".

Combined Scale Factor: 0.99994615

Edge of drive 28.2' SE
Edge of sidewalk 26.3' NW
18" Sweet gum Tree 35.3' NW

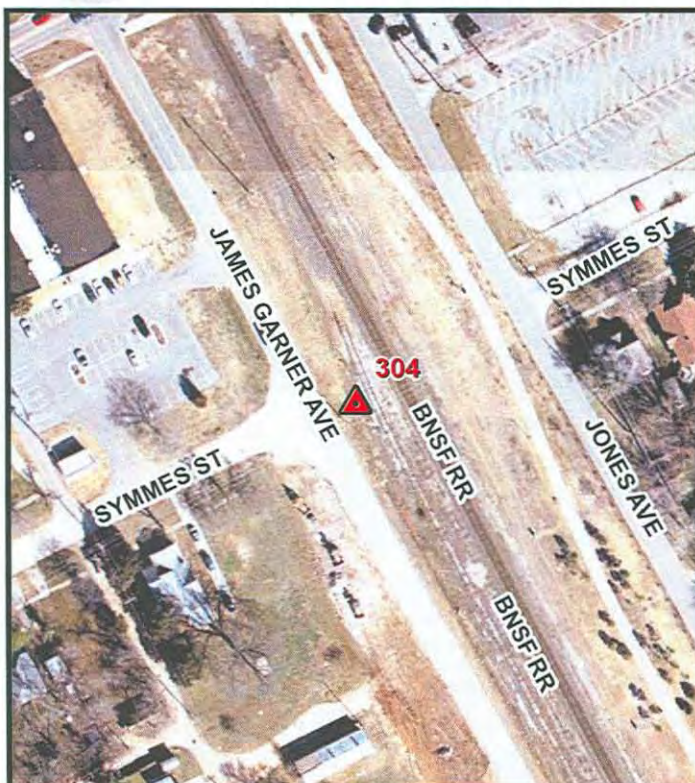
Set 0.2' deep in grass area north of Main Street in front of Fire Station No. 1



Prepared by Lemke Land Surveying, Inc.

Survey Control Monument Data Sheet

Date Printed: March 05, 2009



Combined Scale Factor: 0.99994540

Edge of road 24.5' SW
Derail Post 28.2' N
SW rail of Railroad 36.9' NE
Power Pole 19.4' SW

Set between Front Street and railroad tracks in line with the south edge of Symmes Street.





City of Norman

Survey Control Monument Data Sheet

Date Printed: March 05, 2009

305



Station No.: 305

Monument Description: 3-1/2" Bronze Disc in Concrete

Horizontal Datum - Oklahoma State Plane NAD83(CORS96), South Zone (U.S. Foot)

Northing: 686,427.791

Easting: 2,132,941.697

Vertical Datum - NAVD 88 (U.S. Foot)

Elevation: 1162.07

Geodetic Coordinates

North Latitude: 35° 13' 5.6744"

West Longitude: 97° 26' 58.1054"

Horizontal Control Statement:

The horizontal coordinates were derived from multiple static/rapid static GPS observations to NGS stations "PRCO", "OKDT", "OKTE", and "A-216".

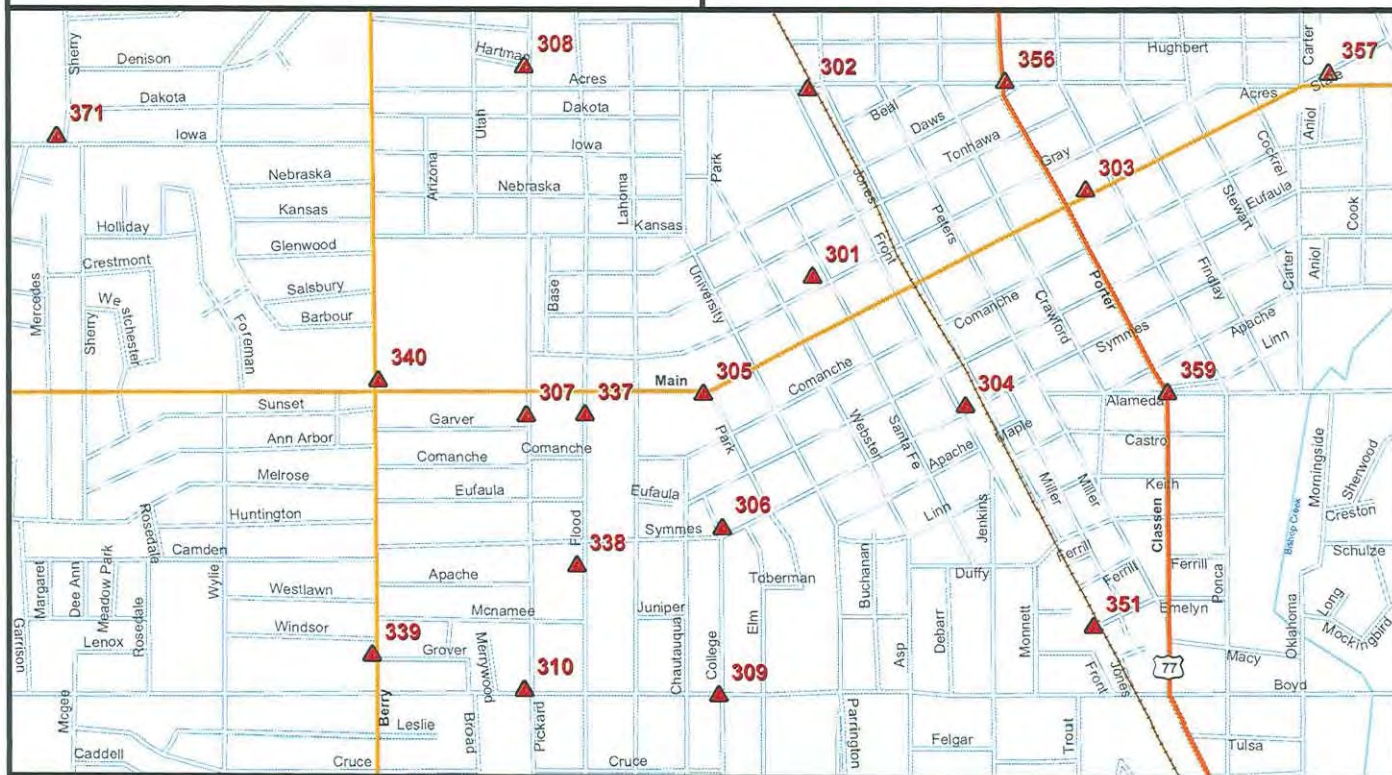
Vertical Control Statement:

The elevations for this control network were determined by differential leveling techniques from NGS stations "C 14 173", "W 215", "V 215", "U 215", and "A 216".

Combined Scale Factor: 0.99994563

Water valve 22.6' NW
Power pole 20.2' SE
Edge of parking lot 7.3' SW

Set in grassed area between the sidewalk and parking lot in the southwest corner of the intersection of Main Street and Park Drive, northeast of "Mardel's Office Supply".





City of Norman

Survey Control Monument Data Sheet

Date Printed: March 05, 2009

306



Station No.: 306

Monument Description: 3-1/2" Bronze Disc in Concrete

Horizontal Datum - Oklahoma State Plane NAD83(CORS96), South Zone (U.S. Foot)

Northing: 685,262.573

Easting: 2,133,102.014

Vertical Datum - NAVD 88 (U.S. Foot)

Elevation: 1159.64

Geodetic Coordinates

North Latitude: 35° 12' 54.1414"

West Longitude: 97° 26' 56.2499"

Horizontal Control Statement:

The horizontal coordinates were derived from multiple static/rapid static GPS observations to NGS stations "PRCO", "OKDT", "OKTE", and "A-216".

Vertical Control Statement:

The elevations for this control network were determined by differential leveling techniques from NGS stations "C 14 173", "W 215", "V 215", "U 215", and "A 216".

Combined Scale Factor: 0.99994513

Edge of sidewalk 21.3' NNW

Water valve 7.2' NNE

Edge of sidewalk 7.3' WSW

Set 0.5' Deep in Northeast corner of the intersection of Symmes Street and College Avenue.





City of Norman

Survey Control Monument Data Sheet

Date Printed: March 05, 2009

307



Station No.: 307

Monument Description: 3-1/2" Bronze Disc in Concrete

Horizontal Datum - Oklahoma State Plane NAD83(CORS96), South Zone (U.S. Foot)

Northing: 686,236.987

Easting: 2,131,423.023

Vertical Datum - NAVD 88 (U.S. Foot)

Elevation: 1160.49

Geodetic Coordinates

North Latitude: 35° 13' 3.8689"

West Longitude: 97° 27' 16.4208"

Horizontal Control Statement:

The horizontal coordinates were derived from multiple static/rapid static GPS observations to NGS stations "PRCO", "OKDT", "OKTE", and "A-216".

Vertical Control Statement:

The elevations for this control network were determined by differential leveling techniques from NGS stations "C 14 173", "W 215", "V 215", "U 215", and "A 216".

Combined Scale Factor: 0.99994561

Edge of drive 11.0' S

Sanitary sewer manhole 12.0' NNW

Set 0.5' east of sidewalk on the east side of Pickard Avenue 1/2 block South of Main Street.





City of Norman

Survey Control Monument Data Sheet

Date Printed: March 05, 2009

308



Station No.: 308

Monument Description: 3-1/2" Bronze Disc in Concrete

Horizontal Datum - Oklahoma State Plane NAD83(CORS96), South Zone (U.S. Foot)

Northing: 689,258.843

Easting: 2,131,411.780

Vertical Datum - NAVD 88 (U.S. Foot)

Elevation: 1168.40

Geodetic Coordinates

North Latitude: 35° 13' 33.7563"

West Longitude: 97° 27' 16.3595"

Horizontal Control Statement:

The horizontal coordinates were derived from multiple static/rapid static GPS observations to NGS stations "PRCO", "OKDT", "OKTE", and "A-216".

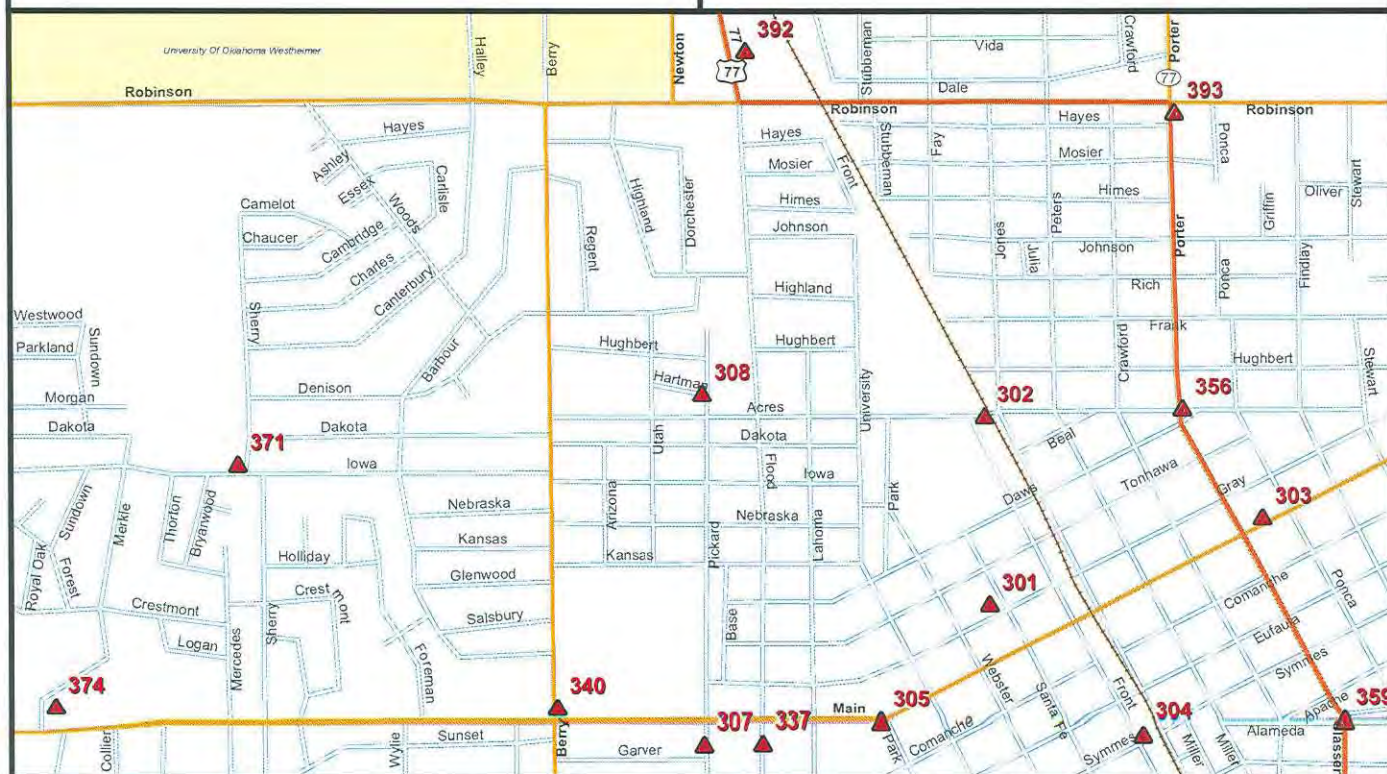
Vertical Control Statement:

The elevations for this control network were determined by differential leveling techniques from NGS stations "C 14 173", "W 215", "V 215", "U 215", and "A 216".

Combined Scale Factor: 0.99994684

Fire hydrant 15.5' NNW
Edge of road 3.0' E

Set near the south, southwest corner of the intersection of Pickard Avenue and Hartman Drive.





City of Norman

Survey Control Monument Data Sheet

Date Printed: March 05, 2009

309



Station No.: 309

Monument Description: 3-1/2" Bronze Disc in Concrete

Horizontal Datum - Oklahoma State Plane NAD83(CORS96), South Zone (U.S. Foot)

Northing: 683,809.285

Easting: 2,133,069.107

Vertical Datum - NAVD 88 (U.S. Foot)

Elevation: 1161.87

Geodetic Coordinates

North Latitude: 35° 12' 39.7698"

West Longitude: 97° 26' 56.7421"

Horizontal Control Statement:

The horizontal coordinates were derived from multiple static/rapid static GPS observations to NGS stations "PRCO", "OKDT", "OKTE", and "A-216".

Vertical Control Statement:

The elevations for this control network were determined by differential leveling techniques from NGS stations "C 14 173", "W 215", "V 215", "U 215", and "A 216".

Combined Scale Factor: 0.99994426

Edge of road 6.7' N
Edge of sidewalk 11.2' S
Edge of sidewalk 2.8' E
Reunion Park sign 24.4' S

Set in grass area between the sidewalks and curb in the southwest corner of the intersection of Boyd Street and College Avenue. In Reunion Park.





City of Norman

Survey Control Monument Data Sheet

Date Printed: March 05, 2009

310



Station No.: 310

Monument Description: 3-1/2" Bronze Disc in Concrete

Horizontal Datum - Oklahoma State Plane NAD83(CORS96), South Zone (U.S. Foot)

Northing: 683,852.307

Easting: 2,131,403.229

Vertical Datum - NAVD 88 (U.S. Foot)

Elevation: 1144.59

Geodetic Coordinates

North Latitude: 35° 12' 40.2848"

West Longitude: 97° 27' 16.8146"

Horizontal Control Statement:

The horizontal coordinates were derived from multiple static/rapid static GPS observations to NGS stations "PRCO", "OKDT", "OKTE", and "A-216".

Vertical Control Statement:

The elevations for this control network were determined by differential leveling techniques from NGS stations "C 14 173", "W 215", "V 215", "U 215", and "A 216".

Combined Scale Factor: 0.99994511

Set in grass at northwest corner of intersection of Boyd and Pickard

Sewer Manhole 5.5' NW
Back of Curb 2.8' S
Concrete Ditch 14.8' E

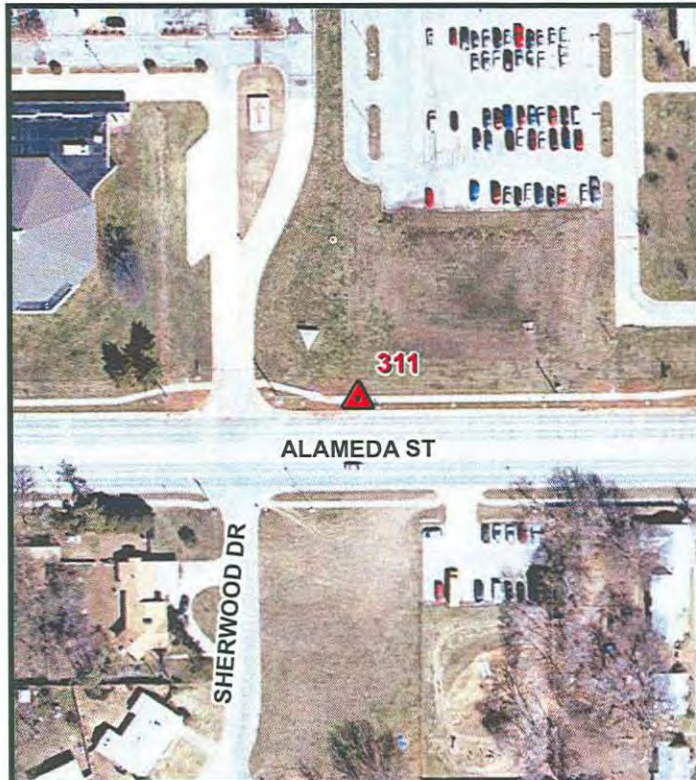




City of Norman

Survey Control Monument Data Sheet

Date Printed: March 05, 2009



Station No.: 311

Monument Description: 3-1/2" Bronze Disc in Concrete

Horizontal Datum - Oklahoma State Plane NAD83(CORS96), South Zone (U.S. Foot)

Northing: 686,555.194

Easting: 2,139,090.543

Vertical Datum - NAVD 88 (U.S. Foot)

Elevation: 1166.00

Geodetic Coordinates

North Latitude: 35° 13' 6.5965"

West Longitude: 97° 25' 43.9913"

Horizontal Control Statement:

The horizontal coordinates were derived from multiple static/rapid static GPS observations to NGS stations "PRCO", "OKDT", "OKTE", and "A-216".

Vertical Control Statement:

The elevations for this control network were determined by differential leveling techniques from NGS stations "C 14 173", "W 215", "V 215", "U 215", and "A 216".

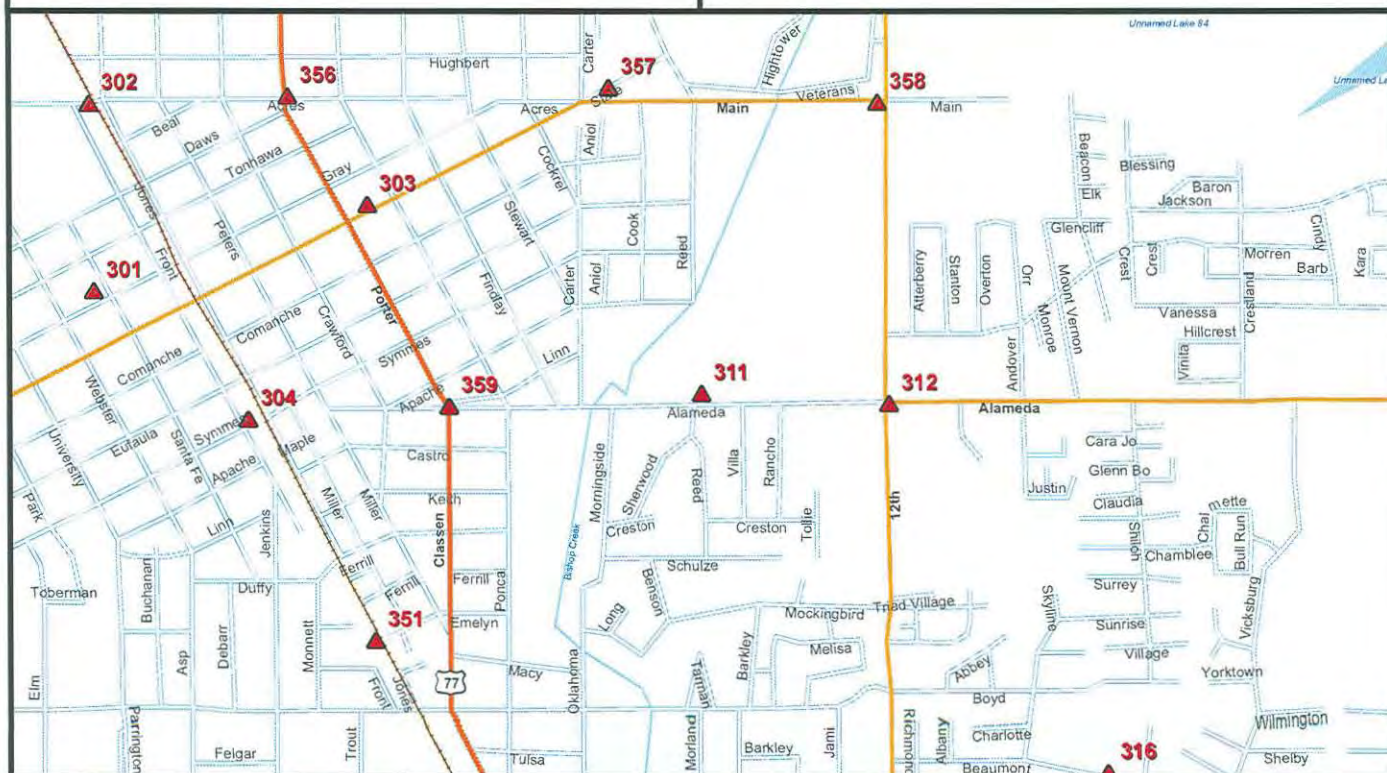
Combined Scale Factor: 0.99994549

Edge of road 12.7' S

Edge of sidewalk 1.4' S

South tip of "Alameda Church of Christ" sign 55.5' NW

Set in grass area north of sidewalk and north of Alameda Street near southwest corner of "Central Oklahoma Community Mental Health Center".



Survey Control Monument Data Sheet

Date Printed: March 05, 2009



Station No.: 312

Monument Description: 3-1/2" Bronze Disc in Concrete

Horizontal Datum - Oklahoma State Plane NAD83(CORS96),
South Zone (U.S. Foot)

Northing: 686,467.790

Easting: 2,140,703.022

Vertical Datum - NAVD 88 (U.S. Foot)

Elevation: 1174.23

Geodetic Coordinates

North Latitude: 35° 13' 5.6414"

West Longitude: 97° 25' 24.5638"

Horizontal Control Statement:

The horizontal coordinates were derived from multiple static/rapid static GPS observations to NGS stations "PRCO", "OKDT", "OKTE", and "A-216".

Vertical Control Statement:

The elevations for this control network were determined by differential leveling techniques from NGS stations "C 14 173", "W 215", "V 215", "U 215", and "A 216".

Combined Scale Factor: 0.99994505

Edge of sidewalk 3.9' NE

West corner of traffic control box 15.6' ENE

Edge of sidewalk 9.0' E

Back of curb 3.1' WNW

Set in grass area between the curb and sidewalk in the southeast corner of the intersection of Alameda Street and 12th Avenue SE.

