

Aerial Photography: 2007
 Coordinate System: Oklahoma State Plane,
 South Zone
 Horizontal Datum: NAD 1983
 Vertical Datum: NAVD 1988

Legend

- City Boundary
- Existing Drainage Easement
- Stream Centerlines**
- Level 1 and 2 (Detailed)
- Level 3 and 4 (General)

- Floodplains**
- 100-year Baseline
- 100-year Solution

- Buildings in Floodplain**
- 100-year Baseline
- 100-year Solution

Recommended Solutions

- Road Crossing Upgrade
- Property Buyouts
- Floodwall
- Channel Stabilization
- Channel Improvements
- Storm Sewer Improvements
- Storm Water Detention

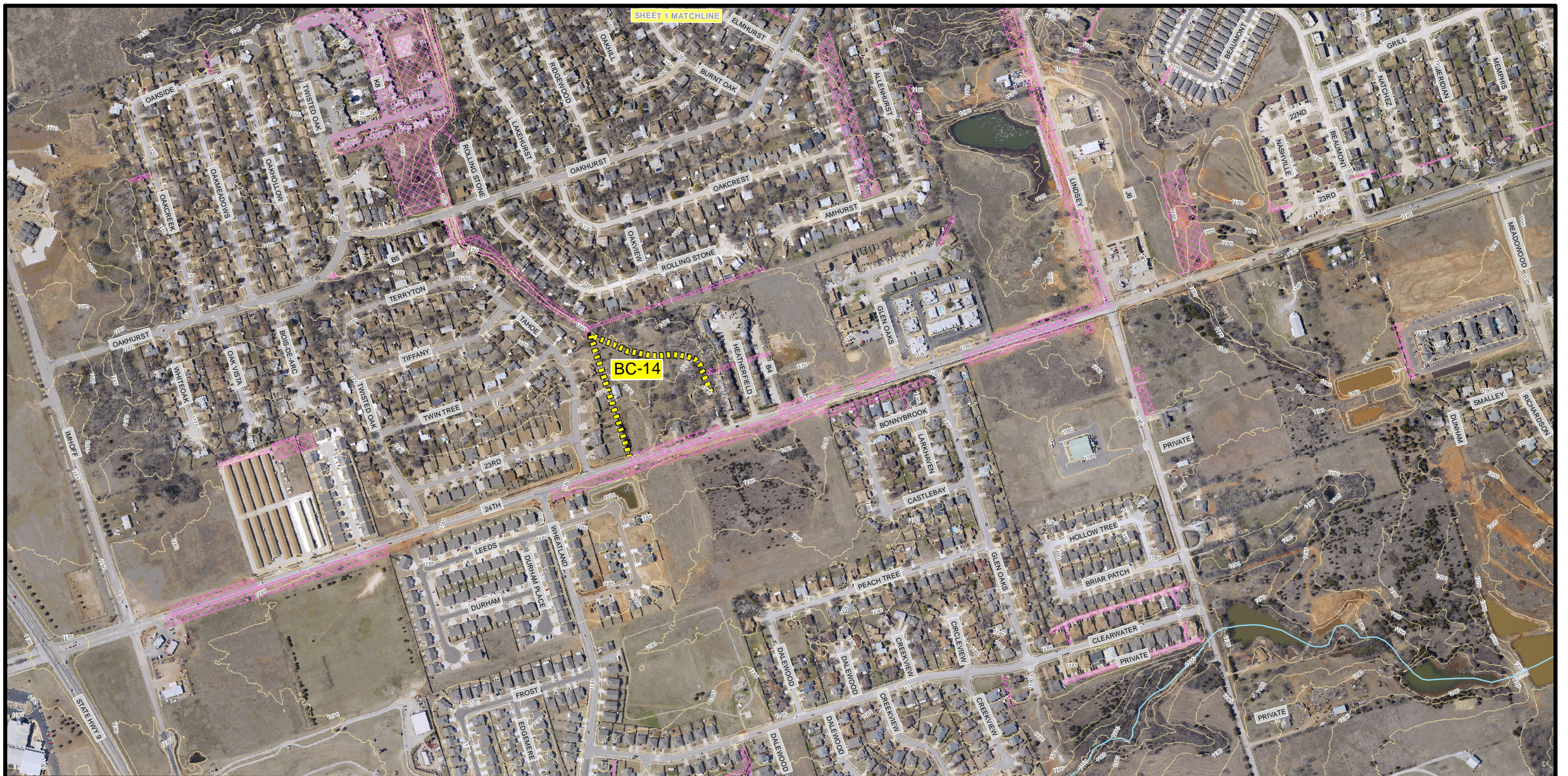


Storm Water Master Plan

Exhibit 6-1b

Baseline Floodplain and Recommended Solutions Overview

Bishop Creek - Tributary A



SHEET 1 MATCHLINE

BC-14



0 250 500 1,000 Feet

Aerial Photography: 2007
 Coordinate System: Oklahoma State Plane,
 South Zone
 Horizontal Datum: NAD 1983
 Vertical Datum: NAVD 1988

Legend

- City Boundary
- Existing Drainage Easement

- Stream Centerlines
- Level 1 and 2 (Detailed)
 - Level 3 and 4 (General)

- Floodplains
- 100-year Baseline
 - 100-year Solution

- Buildings in Floodplain
- 100-year Baseline
 - 100-year Solution

Recommended Solutions

- Road Crossing Upgrade
- Property Buyouts
- Floodwall
- Channel Stabilization
- Channel Improvements
- Storm Sewer Improvements
- Storm Water Detention



Storm Water Master Plan

Exhibit 6-1b

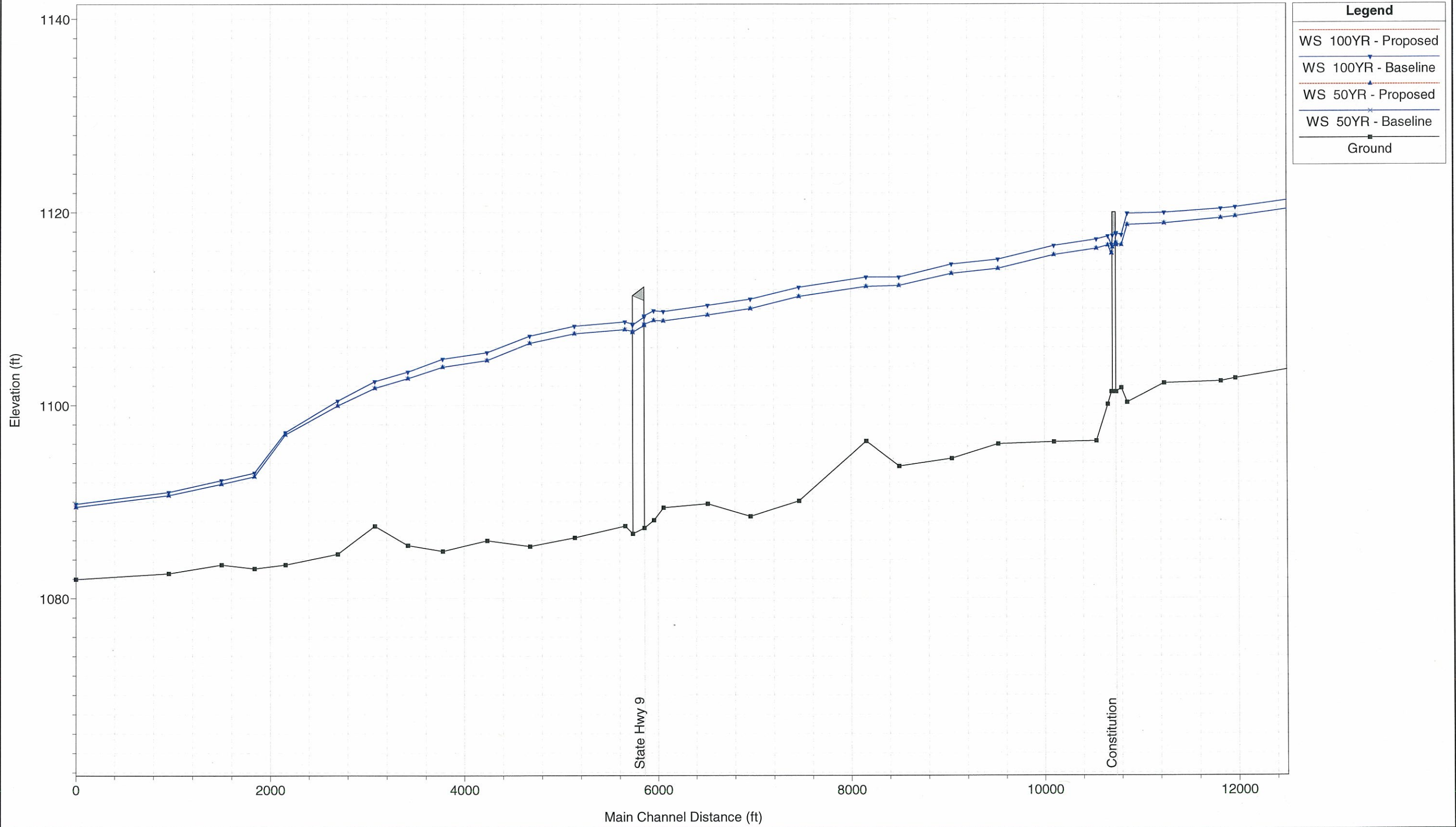
**Baseline Floodplain and
 Recommended Solutions Overview
 Bishop Creek - Tributary A**

Sheet 2 of 2

Job No.: 044194100 | Date: 12-11-08 | Scale: 1 inch = 500 Feet

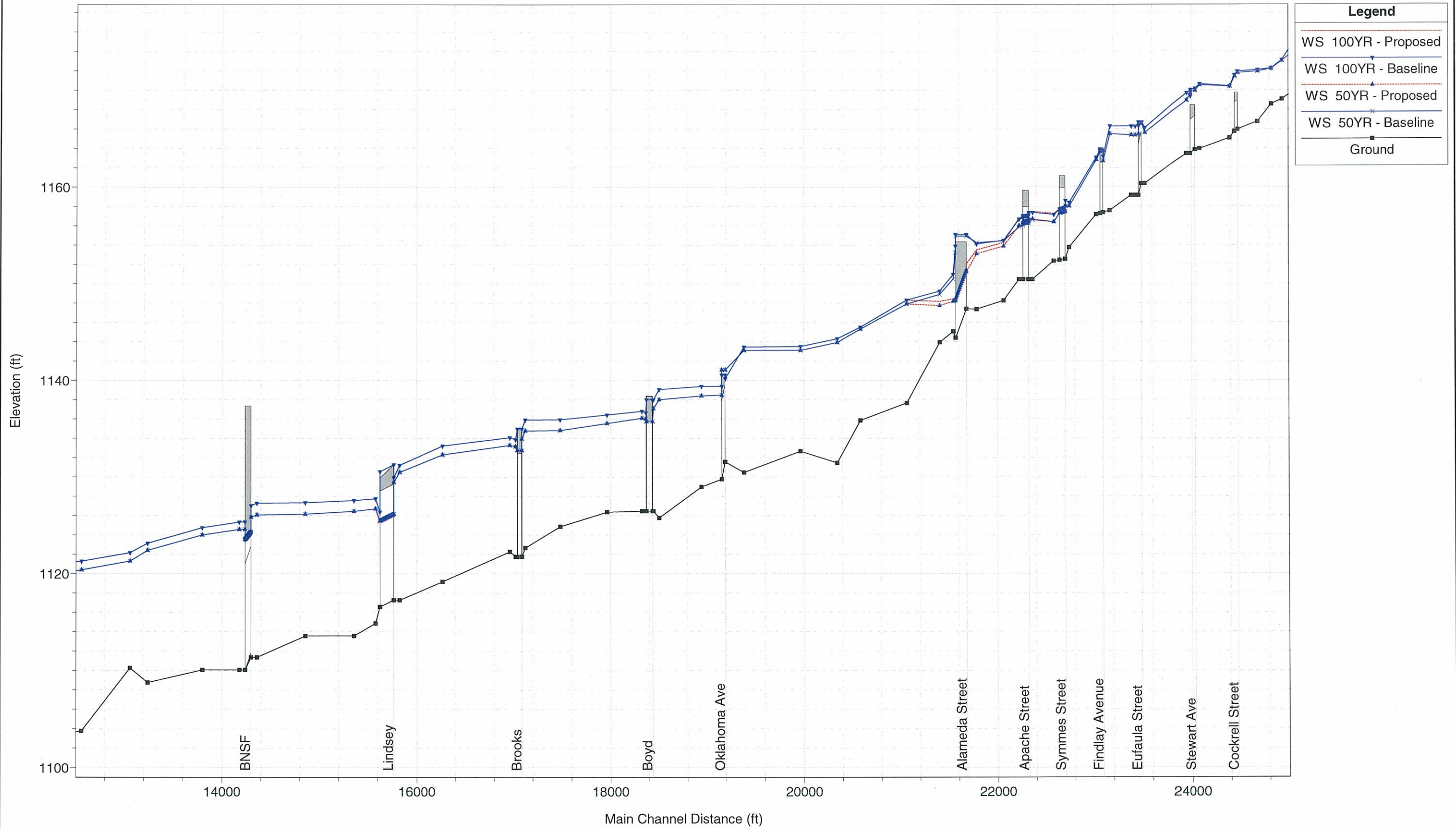
File: W:\WR\proj\441941_Norman\Report\Figures\TibAToBishop_2.mxd

Bishop Creek Mainstem
Exhibit 6-2



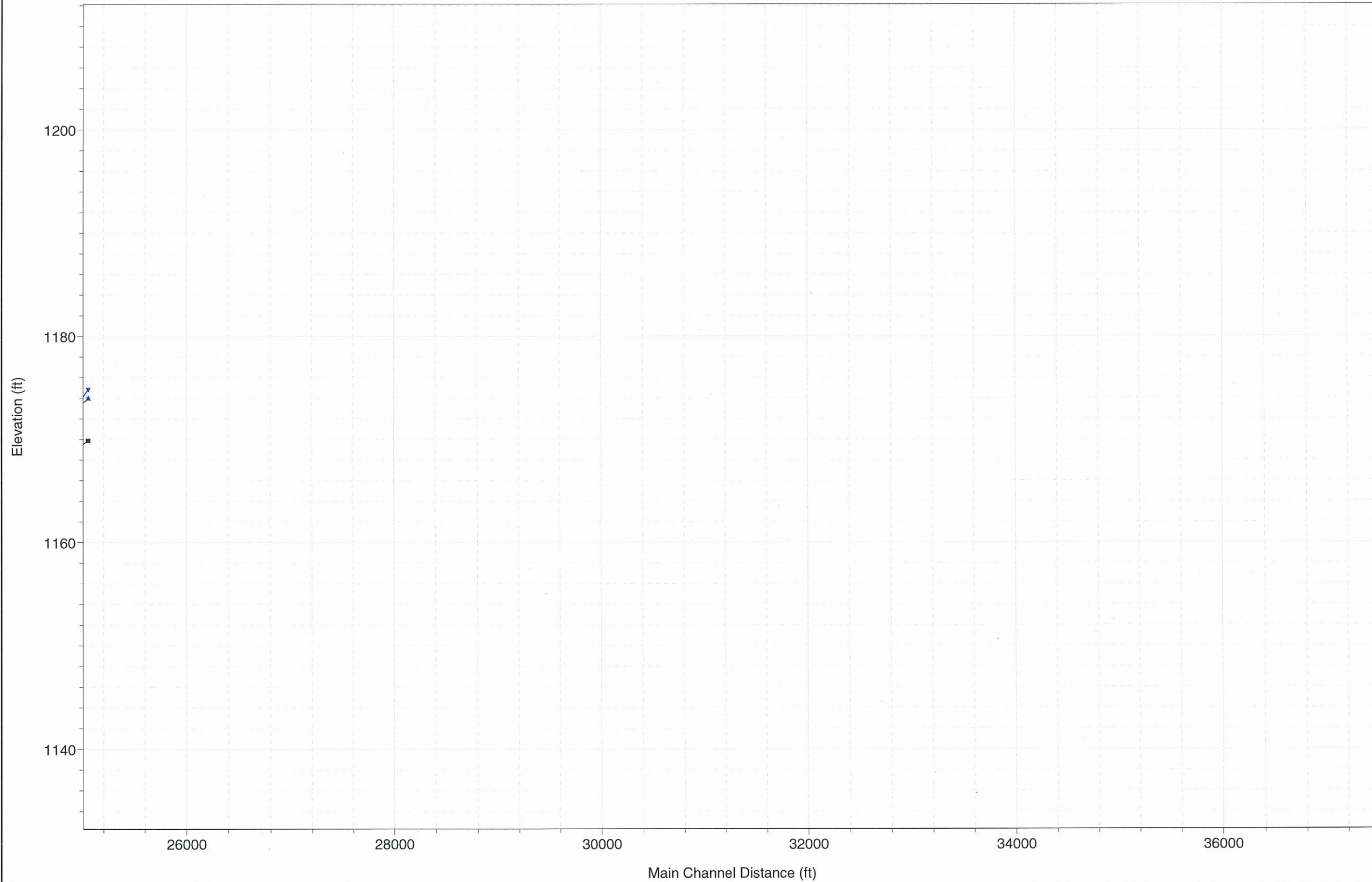
1 in Horiz. = 1000 ft 1 in Vert. = 10 ft

Bishop Creek Mainstem
Exhibit 6-2



1 in Horiz. = 1000 ft 1 in Vert. = 10 ft

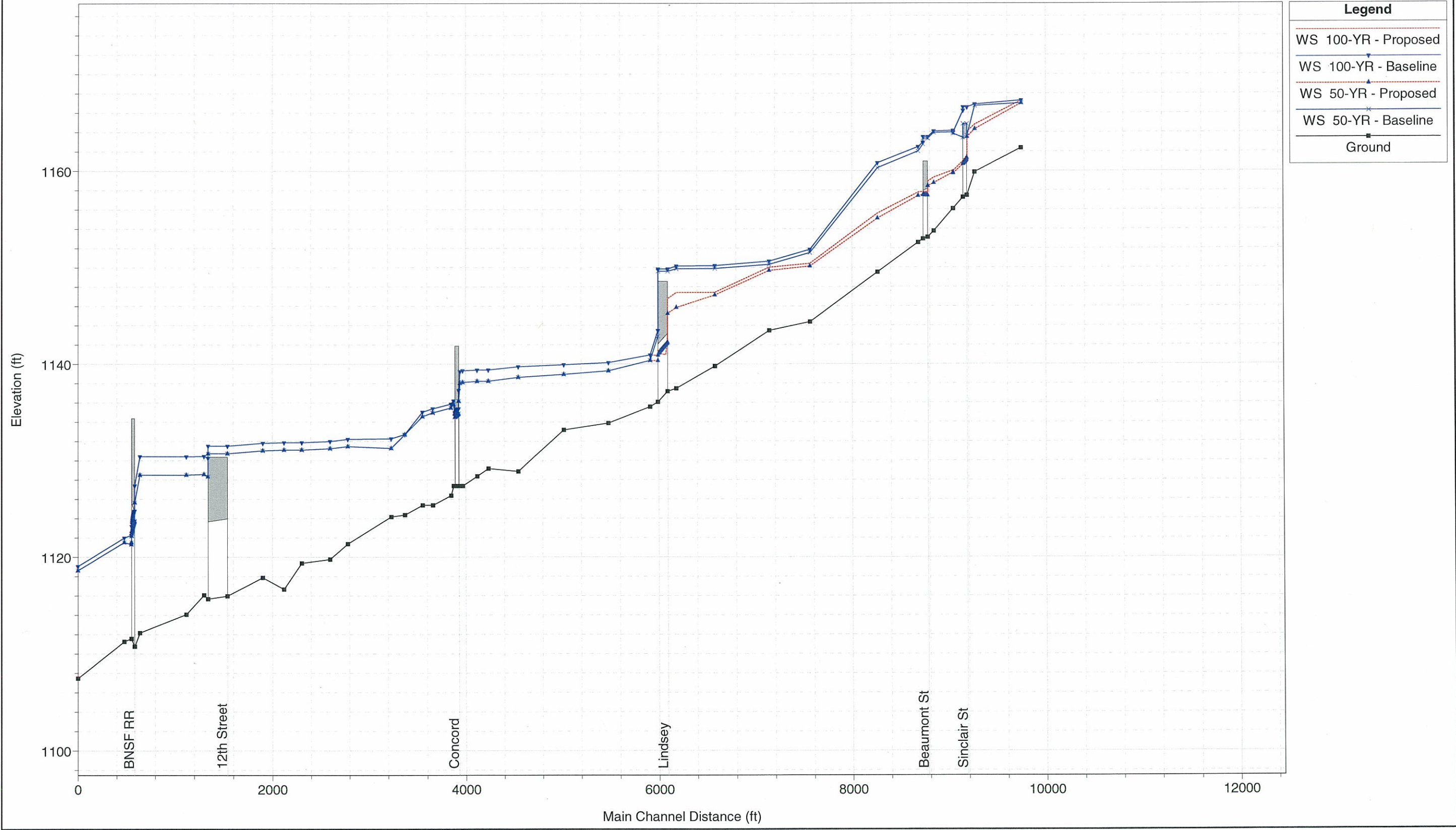
Bishop Creek Mainstem
Exhibit 6-2



Legend	
WS 100YR - Proposed	— (red dashed line)
WS 100YR - Baseline	— (blue solid line)
WS 50YR - Proposed	— (red dashed line)
WS 50YR - Baseline	— (blue solid line)
Ground	— (black solid line)

1 in Horiz. = 1000 ft 1 in Vert. = 10 ft

Bishop Creek - Tributary A
Exhibit 6-2a

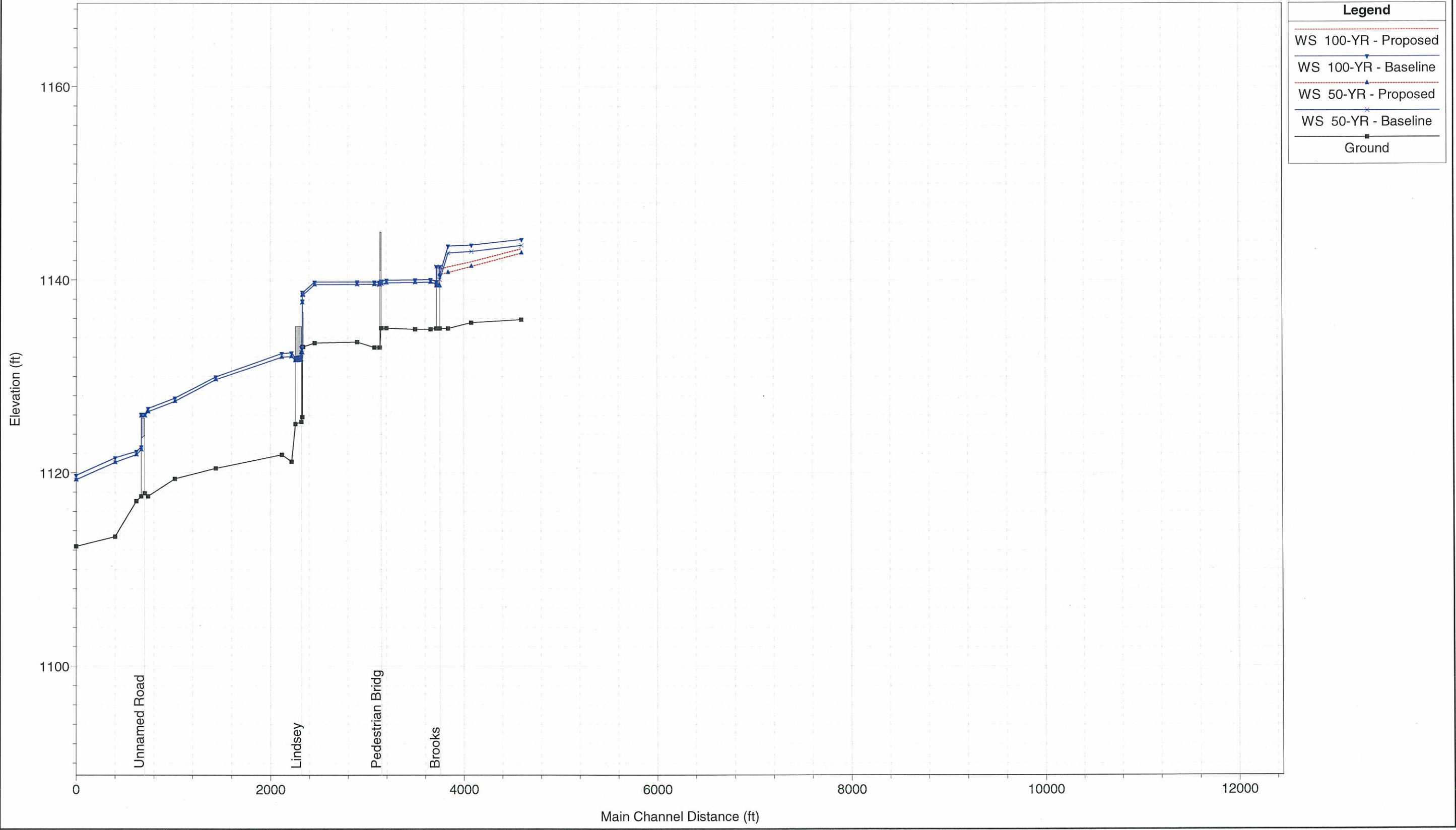


Legend

- WS 100-YR - Proposed
- WS 100-YR - Baseline
- WS 50-YR - Proposed
- WS 50-YR - Baseline
- Ground

1 in Horiz. = 1000 ft 1 in Vert. = 10 ft

Bishop Creek - Tributary C
Exhibit 6-2b



Legend	
WS 100-YR - Proposed	(Dashed red line with upward triangles)
WS 100-YR - Baseline	(Solid blue line with downward triangles)
WS 50-YR - Proposed	(Dashed blue line with asterisks)
WS 50-YR - Baseline	(Solid blue line with asterisks)
Ground	(Solid black line with square markers)

1 in Horiz. = 1000 ft 1 in Vert. = 10 ft