



Ramp 1A



Ramp 4A

Opinion of Probable Construction Cost Disclaimer:

The Engineer has no control over the cost of labor, materials, equipment, or over the Contractor's methods of determining prices or over competitive bidding or market conditions. Opinions of probable costs provided herein are based on the information known to Engineer at this time and represent only the Engineer's judgment as a design professional familiar with the construction industry. The Engineer cannot and does not guarantee that proposals, bids, or actual construction costs will not vary from its opinions of probable costs.

Project Location Map Sources:

Esri, DeLorme, NAVTEQ, USGS, Intermap, iPC, NRCAN, Esri Japan, METI, Esri China (Hong Kong), Esri (Thailand), TomTom, 2013, DigitalGlobe, GeoEye, i-cubed, USDA, AEX, Getmapping, Aerogrip, IGN, IGP, swisstopo, and the GIS User Community

Kimley-Horn and Associates, Inc.

Priority: 5

Project Description for Unsignalized Intersection

Client: City of Norman
 Program: ADA Self-Evaluation and Transition Plan
 KHA No.: 061298800

Date: 4/30/18
 Prepared By: CMP
 Checked By: EPE

Corridor : 24th Ave NW
 Project Name: Intersection of 24th Ave NW and driveway (Lat. 35.228; Long. -97.479)
 City: Norman

GPS ID: 90089

Item No.	Item Description	Quantity	Unit	Unit Price	Item Cost
ODOT 202(A)-0183	Unclassified Excavation	0	CY	\$ 5.50	\$ -
ODOT 609(A)-0300	Concrete Curb (6" Barrier-Integral)	0	LF	\$ 7.00	\$ -
ODOT 610(A)-0602	4" Concrete Sidewalk	15	SY	\$ 50.00	\$ 750.00
ODOT 610(I)-4610	Tactile Warning Device - New	20	SF	\$ 25.00	\$ 500.00
ODOT 610(I)-4615	Tactile Warning Device - Retrofit	0	SF	\$ 60.00	\$ -
ODOT 619(B)-4792	Removal of Sidewalk	15	SY	\$ 12.00	\$ 180.00
ODOT 857(F)-8006	Pavement Marking Removal (Traffic Stripe)	0	LF	\$ 0.25	\$ -
---	Crosswalk Pavement Markings	0	LF	\$ 6.00	\$ -
---	Repave Roadway	0	LS	\$ 5,000.00	\$ -
---	Fix Ponding	0	LS	\$ 2,000.00	\$ -
---	Fix Curb Ramp Transition	2	LS	\$ 2,000.00	\$ 4,000.00
---	Median Nose Modification	0	LS	\$ 5,000.00	\$ -
---	Remove Temporary Obstruction	0	LS	\$ 500.00	\$ -
---	Fix Curb Ramp Counter Slope	0	LS	\$ 2,000.00	\$ -

Basis for Cost Projection

- No Design Completed
- Preliminary Design
- Final Design

Subtotal:	\$	5,430.00
Engineering: (% +/-)	15%	\$ 1,101.43
Contingency: (% +/-)	20%	\$ 1,468.57
Estimated Project Cost:	\$	8,000.00

Project Location



Field Observations

Intersection Issues	Crosswalk				Possible Solutions
	N	E	S	W	
Path of travel pavement condition					All driveway path of travel issues and possible solutions provided in driveway shapefile (TRPEDDRV)
Path of travel running slope is greater than 5%					
Path of travel cross slope is greater than 2% for stop control approaches					
Path of travel cross slope is greater than 5% for free-flow approaches					
Crosswalk width is less than 6'					
Crosswalk striping condition					

Curb Ramp Issues	Curb Ramp ID ('z' or 'l' in ramp label indicates no existing ramp)		Possible Solutions
	1A	4A	
Curb ramp does not exist and is needed			Remove and replace curb ramp
Curb ramp does not land in crosswalk			
No 4' x 4' clear space at base of curb ramp			
Curbed side is not 90° or has traversable adjacent surface	X	X	
Flare cross slope is greater than 10%			
Curb ramp running slope is greater than 8.3%	X		
Blended transition running slope is greater than 5%			
Cut-thru ramp running slope is greater than 5%			
Curb ramp cross slope is greater than 2%		X	
Cut-thru ramp cross slope is greater than 2%			
Curb ramp width is less than 48"			For intersection, commercial driveway, and park ramps, install color truncated domes
Cut-thru ramp width is less than 60"			
Permanent obstruction (>0.25') in curb ramp/landing/flares			
Temporary obstruction (>0.25') in curb ramp/landing/flares			
No textured surface at base of curb ramp	X	X	
No color contrast at base of curb ramp	X	X	
Landing area does not exist and is needed			
Landing area is less than 5' x 5' or slopes greater than 2%			
Curb ramp transition onto roadway is greater than 0.25'	X	X	
Counter slope of the gutter or street at the foot of the curb ramp is greater than 5%			
Ponding occurs at base of curb ramp			



Ramp 1A



Ramp 4A

Opinion of Probable Construction Cost Disclaimer:

The Engineer has no control over the cost of labor, materials, equipment, or over the Contractor's methods of determining prices or over competitive bidding or market conditions. Opinions of probable costs provided herein are based on the information known to Engineer at this time and represent only the Engineer's judgment as a design professional familiar with the construction industry. The Engineer cannot and does not guarantee that proposals, bids, or actual construction costs will not vary from its opinions of probable costs.

Project Location Map Sources:

Esri, DeLorme, NAVTEQ, USGS, Intermap, iPC, NRCAN, Esri Japan, METI, Esri China (Hong Kong), Esri (Thailand), TomTom, 2013, DigitalGlobe, GeoEye, i-cubed, USDA, AEX, Getmapping, Aerogrip, IGN, IGP, swisstopo, and the GIS User Community

Client: City of Norman
 Program: ADA Self-Evaluation and Transition Plan
 KHA No.: 061298800

Date: 4/30/18
 Prepared By: CMP
 Checked By: EPE

Corridor : 24th Ave NW
 Project Name: Intersection of 24th Ave NW and driveway (Lat. 35.2283; Long. -97.4793)
 City: Norman

GPS ID: 90090

Item No.	Item Description	Quantity	Unit	Unit Price	Item Cost
ODOT 202(A)-0183	Unclassified Excavation	0	CY	\$ 5.50	\$ -
ODOT 609(A)-0300	Concrete Curb (6" Barrier-Integral)	0	LF	\$ 7.00	\$ -
ODOT 610(A)-0602	4" Concrete Sidewalk	15	SY	\$ 50.00	\$ 750.00
ODOT 610(I)-4610	Tactile Warning Device - New	20	SF	\$ 25.00	\$ 500.00
ODOT 610(I)-4615	Tactile Warning Device - Retrofit	0	SF	\$ 60.00	\$ -
ODOT 619(B)-4792	Removal of Sidewalk	21	SY	\$ 12.00	\$ 252.00
ODOT 857(F)-8006	Pavement Marking Removal (Traffic Stripe)	0	LF	\$ 0.25	\$ -
---	Crosswalk Pavement Markings	0	LF	\$ 6.00	\$ -
---	Repave Roadway	0	LS	\$ 5,000.00	\$ -
---	Fix Ponding	0	LS	\$ 2,000.00	\$ -
---	Fix Curb Ramp Transition	2	LS	\$ 2,000.00	\$ 4,000.00
---	Median Nose Modification	0	LS	\$ 5,000.00	\$ -
---	Remove Temporary Obstruction	0	LS	\$ 500.00	\$ -
---	Fix Curb Ramp Counter Slope	0	LS	\$ 2,000.00	\$ -

Basis for Cost Projection

- No Design Completed
- Preliminary Design
- Final Design

Subtotal:	\$	5,502.00
Engineering: (% +/-)	15%	\$ 1,070.57
Contingency: (% +/-)	20%	\$ 1,427.43
Estimated Project Cost:	\$	8,000.00

Project Location



Field Observations

Intersection Issues	Crosswalk				Possible Solutions
	N	E	S	W	
Path of travel pavement condition					All driveway path of travel issues and possible solutions provided in driveway shapefile (TRPEDDRV)
Path of travel running slope is greater than 5%					
Path of travel cross slope is greater than 2% for stop control approaches					
Path of travel cross slope is greater than 5% for free-flow approaches					
Crosswalk width is less than 6'					
Crosswalk striping condition					

Curb Ramp Issues	Curb Ramp ID ('z' or 'l' in ramp label indicates no existing ramp)		Possible Solutions
	1A	4A	
Curb ramp does not exist and is needed			Remove and replace curb ramp
Curb ramp does not land in crosswalk			
No 4' x 4' clear space at base of curb ramp			
Curbed side is not 90° or has traversable adjacent surface	X	X	
Flare cross slope is greater than 10%			
Curb ramp running slope is greater than 8.3%	X		
Blended transition running slope is greater than 5%			
Cut-thru ramp running slope is greater than 5%			
Curb ramp cross slope is greater than 2%	X	X	
Cut-thru ramp cross slope is greater than 2%			
Curb ramp width is less than 48"			For intersection, commercial driveway, and park ramps, install color truncated domes
Cut-thru ramp width is less than 60"			
Permanent obstruction (>0.25') in curb ramp/landing/flares			
Temporary obstruction (>0.25') in curb ramp/landing/flares			
No textured surface at base of curb ramp	X	X	
No color contrast at base of curb ramp	X	X	
Landing area does not exist and is needed			
Landing area is less than 5' x 5' or slopes greater than 2%	X	X	
Curb ramp transition onto roadway is greater than 0.25'	X	X	
Counter slope of the gutter or street at the foot of the curb ramp is greater than 5%			
Ponding occurs at base of curb ramp			Remove and replace landing area Fix curb ramp transition



Ramp 1A



Ramp 4A

Opinion of Probable Construction Cost Disclaimer:

The Engineer has no control over the cost of labor, materials, equipment, or over the Contractor's methods of determining prices or over competitive bidding or market conditions. Opinions of probable costs provided herein are based on the information known to Engineer at this time and represent only the Engineer's judgment as a design professional familiar with the construction industry. The Engineer cannot and does not guarantee that proposals, bids, or actual construction costs will not vary from its opinions of probable costs.

Project Location Map Sources:

Esri, DeLorme, NAVTEQ, USGS, Intermap, iPC, NRCAN, Esri Japan, METI, Esri China (Hong Kong), Esri (Thailand), TomTom, 2013, DigitalGlobe, GeoEye, i-cubed, USDA, AEX, Getmapping, Aerogrip, IGN, IGP, swisstopo, and the GIS User Community

Kimley-Horn and Associates, Inc.

Priority: 5

Project Description for Unsignalized Intersection

Client: City of Norman
 Program: ADA Self-Evaluation and Transition Plan
 KHA No.: 061298800

Date: 4/30/18
 Prepared By: CMP
 Checked By: EPE

Corridor: 24th Ave NW
 Project Name: Intersection of 24th Ave NW and driveway (Lat. 35.2286; Long. -97.4797)
 City: Norman

GPS ID: 90091

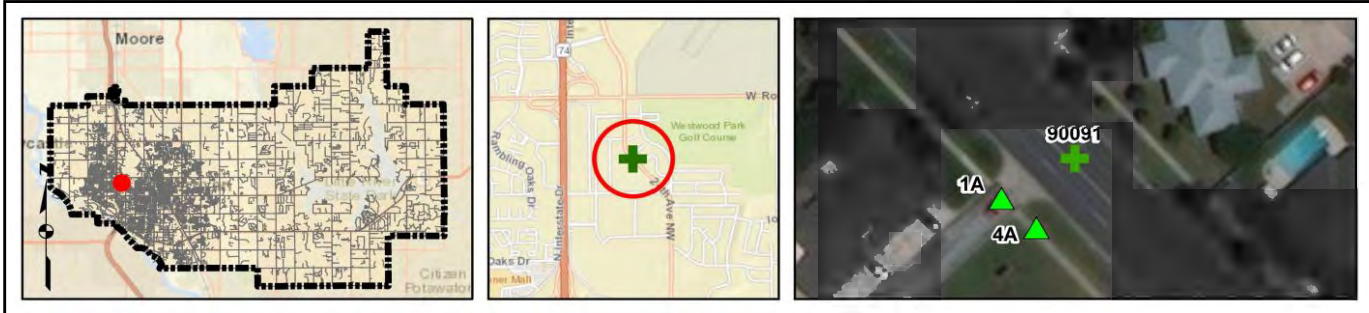
Item No.	Item Description	Quantity	Unit	Unit Price	Item Cost
ODOT 202(A)-0183	Unclassified Excavation	0	CY	\$ 5.50	\$ -
ODOT 609(A)-0300	Concrete Curb (6" Barrier-Integral)	0	LF	\$ 7.00	\$ -
ODOT 610(A)-0602	4" Concrete Sidewalk	15	SY	\$ 50.00	\$ 750.00
ODOT 610(I)-4610	Tactile Warning Device - New	20	SF	\$ 25.00	\$ 500.00
ODOT 610(I)-4615	Tactile Warning Device - Retrofit	0	SF	\$ 60.00	\$ -
ODOT 619(B)-4792	Removal of Sidewalk	18	SY	\$ 12.00	\$ 216.00
ODOT 857(F)-8006	Pavement Marking Removal (Traffic Stripe)	0	LF	\$ 0.25	\$ -
---	Crosswalk Pavement Markings	0	LF	\$ 6.00	\$ -
---	Repave Roadway	0	LS	\$ 5,000.00	\$ -
---	Fix Ponding	0	LS	\$ 2,000.00	\$ -
---	Fix Curb Ramp Transition	2	LS	\$ 2,000.00	\$ 4,000.00
---	Median Nose Modification	0	LS	\$ 5,000.00	\$ -
---	Remove Temporary Obstruction	0	LS	\$ 500.00	\$ -
---	Fix Curb Ramp Counter Slope	0	LS	\$ 2,000.00	\$ -

Basis for Cost Projection

- No Design Completed
- Preliminary Design
- Final Design

Subtotal:	\$	5,466.00
Engineering: (% +/-)	15%	\$ 1,086.00
Contingency: (% +/-)	20%	\$ 1,448.00
Estimated Project Cost:	\$	8,000.00

Project Location



Field Observations

Intersection Issues	Crosswalk				Possible Solutions
	N	E	S	W	
Path of travel pavement condition					All driveway path of travel issues and possible solutions provided in driveway shapefile (TRPEDDRV)
Path of travel running slope is greater than 5%					
Path of travel cross slope is greater than 2% for stop control approaches					
Path of travel cross slope is greater than 5% for free-flow approaches					
Crosswalk width is less than 6'					
Crosswalk striping condition					

Curb Ramp Issues	Curb Ramp ID ('z' or 'l' in ramp label indicates no existing ramp)		Possible Solutions
	1A	4A	
Curb ramp does not exist and is needed			Remove and replace curb ramp
Curb ramp does not land in crosswalk			
No 4' x 4' clear space at base of curb ramp			
Curbed side is not 90° or has traversable adjacent surface			
Flare cross slope is greater than 10%			
Curb ramp running slope is greater than 8.3%			
Blended transition running slope is greater than 5%			
Cut-thru ramp running slope is greater than 5%			
Curb ramp cross slope is greater than 2%			
Cut-thru ramp cross slope is greater than 2%			
Curb ramp width is less than 48"	X	X	For intersection, commercial driveway, and park ramps, install color truncated domes
Cut-thru ramp width is less than 60"			
Permanent obstruction (>0.25') in curb ramp/landing/flares			
Temporary obstruction (>0.25') in curb ramp/landing/flares			
No textured surface at base of curb ramp	X	X	
No color contrast at base of curb ramp	X	X	
Landing area does not exist and is needed			
Landing area is less than 5' x 5' or slopes greater than 2%		X	
Curb ramp transition onto roadway is greater than 0.25'	X	X	
Counter slope of the gutter or street at the foot of the curb ramp is greater than 5%			
Ponding occurs at base of curb ramp			Remove and replace landing area Fix curb ramp transition



Ramp 1A



Ramp 4A

Opinion of Probable Construction Cost Disclaimer:

The Engineer has no control over the cost of labor, materials, equipment, or over the Contractor's methods of determining prices or over competitive bidding or market conditions. Opinions of probable costs provided herein are based on the information known to Engineer at this time and represent only the Engineer's judgment as a design professional familiar with the construction industry. The Engineer cannot and does not guarantee that proposals, bids, or actual construction costs will not vary from its opinions of probable costs.

Project Location Map Sources:

Esri, DeLorme, NAVTEQ, USGS, Intermap, iPC, NRCAN, Esri Japan, METI, Esri China (Hong Kong), Esri (Thailand), TomTom, 2013, DigitalGlobe, GeoEye, i-cubed, USDA, AEX, Getmapping, Aerogrip, IGN, IGP, swisstopo, and the GIS User Community

Client: City of Norman
 Program: ADA Self-Evaluation and Transition Plan
 KHA No.: 061298800

Date: 4/30/18
 Prepared By: CMP
 Checked By: EPE

Corridor : 24th Ave NW
 Project Name: Intersection of 24th Ave NW and driveway (Lat. 35.2291; Long. -97.4802)
 City: Norman

GPS ID: 90092

Item No.	Item Description	Quantity	Unit	Unit Price	Item Cost
ODOT 202(A)-0183	Unclassified Excavation	0	CY	\$ 5.50	\$ -
ODOT 609(A)-0300	Concrete Curb (6" Barrier-Integral)	0	LF	\$ 7.00	\$ -
ODOT 610(A)-0602	4" Concrete Sidewalk	3	SY	\$ 50.00	\$ 150.00
ODOT 610(I)-4610	Tactile Warning Device - New	0	SF	\$ 25.00	\$ -
ODOT 610(I)-4615	Tactile Warning Device - Retrofit	40	SF	\$ 60.00	\$ 2,400.00
ODOT 619(B)-4792	Removal of Sidewalk	3	SY	\$ 12.00	\$ 36.00
ODOT 857(F)-8006	Pavement Marking Removal (Traffic Stripe)	0	LF	\$ 0.25	\$ -
---	Crosswalk Pavement Markings	0	LF	\$ 6.00	\$ -
---	Repave Roadway	0	LS	\$ 5,000.00	\$ -
---	Fix Ponding	0	LS	\$ 2,000.00	\$ -
---	Fix Curb Ramp Transition	1	LS	\$ 2,000.00	\$ 2,000.00
---	Median Nose Modification	0	LS	\$ 5,000.00	\$ -
---	Remove Temporary Obstruction	0	LS	\$ 500.00	\$ -
---	Fix Curb Ramp Counter Slope	0	LS	\$ 2,000.00	\$ -

Basis for Cost Projection

- No Design Completed
- Preliminary Design
- Final Design

Subtotal:	\$	4,586.00
Engineering: (% +/-)	15%	\$ 1,034.57
Contingency: (% +/-)	20%	\$ 1,379.43
Estimated Project Cost:	\$	7,000.00

Project Location



Field Observations

Intersection Issues	Crosswalk				Possible Solutions
	N	E	S	W	
Path of travel pavement condition					All driveway path of travel issues and possible solutions provided in driveway shapefile (TRPEDDRV)
Path of travel running slope is greater than 5%					
Path of travel cross slope is greater than 2% for stop control approaches					
Path of travel cross slope is greater than 5% for free-flow approaches					
Crosswalk width is less than 6'					
Crosswalk striping condition					

Curb Ramp Issues	Curb Ramp ID ('z' or 'l' in ramp label indicates no existing ramp)				Possible Solutions
	1A	2z	3z	4A	
Curb ramp does not exist and is needed					For intersection, commercial driveway, and park ramps, install color truncated domes Remove and replace landing area Fix curb ramp transition
Curb ramp does not land in crosswalk					
No 4' x 4' clear space at base of curb ramp					
Curbed side is not 90° or has traversable adjacent surface					
Flare cross slope is greater than 10%					
Curb ramp running slope is greater than 8.3%					
Blended transition running slope is greater than 5%					
Cut-thru ramp running slope is greater than 5%					
Curb ramp cross slope is greater than 2%					
Cut-thru ramp cross slope is greater than 2%					
Curb ramp width is less than 48"					
Cut-thru ramp width is less than 60"					
Permanent obstruction (>0.25') in curb ramp/landing/flares					
Temporary obstruction (>0.25') in curb ramp/landing/flares					
No textured surface at base of curb ramp	X	X	X	X	
No color contrast at base of curb ramp	X	X	X	X	
Landing area does not exist and is needed					
Landing area is less than 5' x 5' or slopes greater than 2%	X				
Curb ramp transition onto roadway is greater than 0.25'				X	
Counter slope of the gutter or street at the foot of the curb ramp is greater than 5%					
Ponding occurs at base of curb ramp					



Ramp 1A



Corner 2 No Ramp (2z)



Corner 3 No Ramp (3z)



Ramp 4A

Opinion of Probable Construction Cost Disclaimer:

The Engineer has no control over the cost of labor, materials, equipment, or over the Contractor's methods of determining prices or over competitive bidding or market conditions. Opinions of probable costs provided herein are based on the information known to Engineer at this time and represent only the Engineer's judgment as a design professional familiar with the construction industry. The Engineer cannot and does not guarantee that proposals, bids, or actual construction costs will not vary from its opinions of probable costs.

Project Location Map Sources:

Esri, DeLorme, NAVTEQ, USGS, Intermap, iPC, NRCAN, Esri Japan, METI, Esri China (Hong Kong), Esri (Thailand), TomTom, 2013, DigitalGlobe, GeoEye, i-cubed, USDA, AEX, Getmapping, Aerogrip, IGN, IGP, swisstopo, and the GIS User Community

Kimley-Horn and Associates, Inc.

Priority: 2

Project Description for Unsignalized Intersection

Client: City of Norman
 Program: ADA Self-Evaluation and Transition Plan
 KHA No.: 061298800

Date: 4/30/18
 Prepared By: CMP
 Checked By: EPE

Corridor: 24th Ave NW
 Project Name: Intersection of 24th Ave NW and drainage structure (Lat. 35.2293; Long. -97.4803)
 City: Norman

GPS ID: 90093

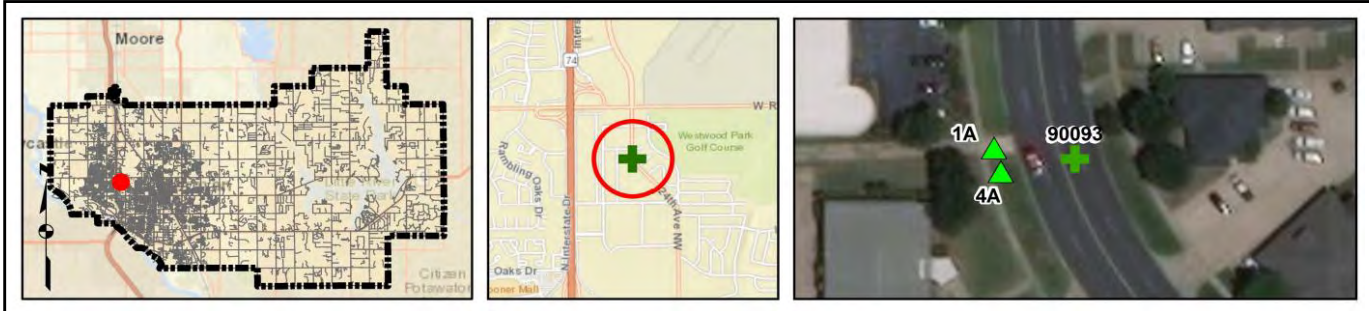
Item No.	Item Description	Quantity	Unit	Unit Price	Item Cost
ODOT 202(A)-0183	Unclassified Excavation	0	CY	\$ 5.50	\$ -
ODOT 609(A)-0300	Concrete Curb (6" Barrier-Integral)	0	LF	\$ 7.00	\$ -
ODOT 610(A)-0602	4" Concrete Sidewalk	15	SY	\$ 50.00	\$ 750.00
ODOT 610(I)-4610	Tactile Warning Device - New	20	SF	\$ 25.00	\$ 500.00
ODOT 610(I)-4615	Tactile Warning Device - Retrofit	0	SF	\$ 60.00	\$ -
ODOT 619(B)-4792	Removal of Sidewalk	18	SY	\$ 12.00	\$ 216.00
ODOT 857(F)-8006	Pavement Marking Removal (Traffic Stripe)	0	LF	\$ 0.25	\$ -
---	Crosswalk Pavement Markings	0	LF	\$ 6.00	\$ -
---	Repave Roadway	0	LS	\$ 5,000.00	\$ -
---	Fix Ponding	0	LS	\$ 2,000.00	\$ -
---	Fix Curb Ramp Transition	2	LS	\$ 2,000.00	\$ 4,000.00
---	Median Nose Modification	0	LS	\$ 5,000.00	\$ -
---	Remove Temporary Obstruction	0	LS	\$ 500.00	\$ -
---	Fix Curb Ramp Counter Slope	0	LS	\$ 2,000.00	\$ -

Basis for Cost Projection

- No Design Completed
- Preliminary Design
- Final Design

Subtotal:	\$	5,466.00
Engineering: (% +/-)	15%	\$ 1,086.00
Contingency: (% +/-)	20%	\$ 1,448.00
Estimated Project Cost:	\$	8,000.00

Project Location



Field Observations

Intersection Issues	Crosswalk				Possible Solutions
	N	E	S	W	
Path of travel pavement condition					All driveway path of travel issues and possible solutions provided in driveway shapefile (TRPEDDRV)
Path of travel running slope is greater than 5%					
Path of travel cross slope is greater than 2% for stop control approaches					
Path of travel cross slope is greater than 5% for free-flow approaches					
Crosswalk width is less than 6'					
Crosswalk striping condition					

Curb Ramp Issues	Curb Ramp ID ('z' or 'l' in ramp label indicates no existing ramp)		Possible Solutions
	1A	4A	
Curb ramp does not exist and is needed			Remove and replace curb ramp
Curb ramp does not land in crosswalk			
No 4' x 4' clear space at base of curb ramp			
Curbed side is not 90° or has traversable adjacent surface			
Flare cross slope is greater than 10%			
Curb ramp running slope is greater than 8.3%	X	X	
Blended transition running slope is greater than 5%			
Cut-thru ramp running slope is greater than 5%			
Curb ramp cross slope is greater than 2%			
Cut-thru ramp cross slope is greater than 2%			
Curb ramp width is less than 48"			For intersection, commercial driveway, and park ramps, install color truncated domes
Cut-thru ramp width is less than 60"			
Permanent obstruction (>0.25') in curb ramp/landing/flares			
Temporary obstruction (>0.25') in curb ramp/landing/flares			
No textured surface at base of curb ramp	X	X	
No color contrast at base of curb ramp	X	X	
Landing area does not exist and is needed			
Landing area is less than 5' x 5' or slopes greater than 2%	X		
Curb ramp transition onto roadway is greater than 0.25'	X	X	
Counter slope of the gutter or street at the foot of the curb ramp is greater than 5%			
Ponding occurs at base of curb ramp			



Ramp 1A



Ramp 4A

Opinion of Probable Construction Cost Disclaimer:

The Engineer has no control over the cost of labor, materials, equipment, or over the Contractor's methods of determining prices or over competitive bidding or market conditions. Opinions of probable costs provided herein are based on the information known to Engineer at this time and represent only the Engineer's judgment as a design professional familiar with the construction industry. The Engineer cannot and does not guarantee that proposals, bids, or actual construction costs will not vary from its opinions of probable costs.

Project Location Map Sources:

Esri, DeLorme, NAVTEQ, USGS, Intermap, iPC, NRCAN, Esri Japan, METI, Esri China (Hong Kong), Esri (Thailand), TomTom, 2013, DigitalGlobe, GeoEye, i-cubed, USDA, AEX, Getmapping, Aerogrip, IGN, IGP, swisstopo, and the GIS User Community

Kimley-Horn and Associates, Inc.

Priority: 2

Project Description for Unsignalized Intersection

Client: City of Norman
 Program: ADA Self-Evaluation and Transition Plan
 KHA No.: 061298800

Date: 4/30/18
 Prepared By: CMP
 Checked By: EPE

Corridor : 24th Ave NW
 Project Name: Intersection of 24th Ave NW and driveway (Lat. 35.2296; Long. -97.4804)
 City: Norman

GPS ID: 90094

Item No.	Item Description	Quantity	Unit	Unit Price	Item Cost
ODOT 202(A)-0183	Unclassified Excavation	0	CY	\$ 5.50	\$ -
ODOT 609(A)-0300	Concrete Curb (6" Barrier-Integral)	0	LF	\$ 7.00	\$ -
ODOT 610(A)-0602	4" Concrete Sidewalk	30	SY	\$ 50.00	\$ 1,500.00
ODOT 610(I)-4610	Tactile Warning Device - New	40	SF	\$ 25.00	\$ 1,000.00
ODOT 610(I)-4615	Tactile Warning Device - Retrofit	0	SF	\$ 60.00	\$ -
ODOT 619(B)-4792	Removal of Sidewalk	38	SY	\$ 12.00	\$ 456.00
ODOT 857(F)-8006	Pavement Marking Removal (Traffic Stripe)	0	LF	\$ 0.25	\$ -
---	Crosswalk Pavement Markings	0	LF	\$ 6.00	\$ -
---	Repave Roadway	0	LS	\$ 5,000.00	\$ -
---	Fix Ponding	0	LS	\$ 2,000.00	\$ -
---	Fix Curb Ramp Transition	4	LS	\$ 2,000.00	\$ 8,000.00
---	Median Nose Modification	0	LS	\$ 5,000.00	\$ -
---	Remove Temporary Obstruction	0	LS	\$ 500.00	\$ -
---	Fix Curb Ramp Counter Slope	0	LS	\$ 2,000.00	\$ -

Basis for Cost Projection

- No Design Completed
- Preliminary Design
- Final Design

Subtotal:	\$	10,956.00
Engineering: (% +/-)	15%	\$ 1,733.14
Contingency: (% +/-)	20%	\$ 2,310.86
Estimated Project Cost:	\$	15,000.00

Project Location



Field Observations

Intersection Issues	Crosswalk				Possible Solutions
	N	E	S	W	
Path of travel pavement condition					All driveway path of travel issues and possible solutions provided in driveway shapefile (TRPEDDRV)
Path of travel running slope is greater than 5%					
Path of travel cross slope is greater than 2% for stop control approaches					
Path of travel cross slope is greater than 5% for free-flow approaches					
Crosswalk width is less than 6'					
Crosswalk striping condition					

Curb Ramp Issues	Curb Ramp ID ('z' or 'l' in ramp label indicates no existing ramp)				Possible Solutions
	1A	2A	3A	4A	
Curb ramp does not exist and is needed					Remove and replace curb ramp
Curb ramp does not land in crosswalk					
No 4' x 4' clear space at base of curb ramp					
Curbed side is not 90° or has traversable adjacent surface	X	X	X	X	
Flare cross slope is greater than 10%					
Curb ramp running slope is greater than 8.3%		X	X	X	
Blended transition running slope is greater than 5%					
Cut-thru ramp running slope is greater than 5%					
Curb ramp cross slope is greater than 2%		X	X		
Cut-thru ramp cross slope is greater than 2%					
Curb ramp width is less than 48"		X	X		
Cut-thru ramp width is less than 60"					
Permanent obstruction (>0.25') in curb ramp/landing/flares					For intersection, commercial driveway, and park ramps, install color truncated domes
Temporary obstruction (>0.25') in curb ramp/landing/flares					
No textured surface at base of curb ramp	X	X	X	X	
No color contrast at base of curb ramp	X	X	X	X	
Landing area does not exist and is needed					
Landing area is less than 5' x 5' or slopes greater than 2%		X	X	X	Remove and replace landing area Fix curb ramp transition
Curb ramp transition onto roadway is greater than 0.25'	X	X	X	X	
Counter slope of the gutter or street at the foot of the curb ramp is greater than 5%					
Ponding occurs at base of curb ramp					



Ramp 1A



Ramp 2A



Ramp 3A



Ramp 4A

Opinion of Probable Construction Cost Disclaimer:

The Engineer has no control over the cost of labor, materials, equipment, or over the Contractor's methods of determining prices or over competitive bidding or market conditions. Opinions of probable costs provided herein are based on the information known to Engineer at this time and represent only the Engineer's judgment as a design professional familiar with the construction industry. The Engineer cannot and does not guarantee that proposals, bids, or actual construction costs will not vary from its opinions of probable costs.

Project Location Map Sources:

Esri, DeLorme, NAVTEQ, USGS, Intermap, iPC, NRCAN, Esri Japan, METI, Esri China (Hong Kong), Esri (Thailand), TomTom, 2013, DigitalGlobe, GeoEye, i-cubed, USDA, AEX, Getmapping, Aerogrip, IGN, IGP, swisstopo, and the GIS User Community

Kimley-Horn and Associates, Inc.

Priority: 2

Project Description for Unsignalized Intersection

Client: City of Norman
 Program: ADA Self-Evaluation and Transition Plan
 KHA No.: 061298800

Date: 4/30/18
 Prepared By: CMP
 Checked By: EPE

Corridor: 24th Ave NW
 Project Name: Intersection of 24th Ave NW and driveway (Lat. 35.2306; Long. -97.4804)
 City: Norman

GPS ID: 90095

Item No.	Item Description	Quantity	Unit	Unit Price	Item Cost
ODOT 202(A)-0183	Unclassified Excavation	0	CY	\$ 5.50	\$ -
ODOT 609(A)-0300	Concrete Curb (6" Barrier-Integral)	0	LF	\$ 7.00	\$ -
ODOT 610(A)-0602	4" Concrete Sidewalk	30	SY	\$ 50.00	\$ 1,500.00
ODOT 610(I)-4610	Tactile Warning Device - New	40	SF	\$ 25.00	\$ 1,000.00
ODOT 610(I)-4615	Tactile Warning Device - Retrofit	0	SF	\$ 60.00	\$ -
ODOT 619(B)-4792	Removal of Sidewalk	38	SY	\$ 12.00	\$ 456.00
ODOT 857(F)-8006	Pavement Marking Removal (Traffic Stripe)	0	LF	\$ 0.25	\$ -
---	Crosswalk Pavement Markings	0	LF	\$ 6.00	\$ -
---	Repave Roadway	0	LS	\$ 5,000.00	\$ -
---	Fix Ponding	0	LS	\$ 2,000.00	\$ -
---	Fix Curb Ramp Transition	4	LS	\$ 2,000.00	\$ 8,000.00
---	Median Nose Modification	0	LS	\$ 5,000.00	\$ -
---	Remove Temporary Obstruction	0	LS	\$ 500.00	\$ -
---	Fix Curb Ramp Counter Slope	0	LS	\$ 2,000.00	\$ -

Basis for Cost Projection

- No Design Completed
- Preliminary Design
- Final Design

Subtotal:	\$	10,956.00
Engineering: (% +/-)	15%	\$ 1,733.14
Contingency: (% +/-)	20%	\$ 2,310.86
Estimated Project Cost:	\$	15,000.00

Project Location



Field Observations

Intersection Issues	Crosswalk				Possible Solutions
	N	E	S	W	
Path of travel pavement condition					All driveway path of travel issues and possible solutions provided in driveway shapefile (TRPEDDRV)
Path of travel running slope is greater than 5%					
Path of travel cross slope is greater than 2% for stop control approaches					
Path of travel cross slope is greater than 5% for free-flow approaches					
Crosswalk width is less than 6'					
Crosswalk striping condition					

Curb Ramp Issues	Curb Ramp ID ('z' or 'l' in ramp label indicates no existing ramp)					Possible Solutions
	WF	1A	2A	3A	4A	
Curb ramp does not exist and is needed	X					Median nose modification
Curb ramp does not land in crosswalk						
No 4' x 4' clear space at base of curb ramp						Remove and replace curb ramp
Curbed side is not 90° or has traversable adjacent surface	X	X	X	X	X	
Flare cross slope is greater than 10%						
Curb ramp running slope is greater than 8.3%		X	X	X		
Blended transition running slope is greater than 5%						
Cut-thru ramp running slope is greater than 5%						
Curb ramp cross slope is greater than 2%		X	X	X	X	
Cut-thru ramp cross slope is greater than 2%	X					
Curb ramp width is less than 48"			X	X		
Cut-thru ramp width is less than 60"	X					
Permanent obstruction (>0.25') in curb ramp/landing/flares						For intersection, commercial driveway, and park ramps, install color truncated domes
Temporary obstruction (>0.25') in curb ramp/landing/flares						
No textured surface at base of curb ramp	X	X	X	X	X	
No color contrast at base of curb ramp	X	X	X	X	X	
Landing area does not exist and is needed						
Landing area is less than 5' x 5' or slopes greater than 2%		X	X		X	
Curb ramp transition onto roadway is greater than 0.25'	X	X	X		X	
Counter slope of the gutter or street at the foot of the curb ramp is greater than 5%						
Ponding occurs at base of curb ramp						



Ramp West F



Ramp 1A



Ramp 2A



Ramp 3A



Ramp 4A

Opinion of Probable Construction Cost Disclaimer:

The Engineer has no control over the cost of labor, materials, equipment, or over the Contractor's methods of determining prices or over competitive bidding or market conditions. Opinions of probable costs provided herein are based on the information known to Engineer at this time and represent only the Engineer's judgment as a design professional familiar with the construction industry. The Engineer cannot and does not guarantee that proposals, bids, or actual construction costs will not vary from its opinions of probable costs.

Project Location Map Sources:

Esri, DeLorme, NAVTEQ, USGS, Intermap, iPC, NRCAN, Esri Japan, METI, Esri China (Hong Kong), Esri (Thailand), TomTom, 2013, DigitalGlobe, GeoEye, i-cubed, USDA, AEX, Getmapping, Aerogrip, IGN, IGP, swisstopo, and the GIS User Community

Kimley-Horn and Associates, Inc.

Priority: 5

Project Description for Unsignalized Intersection

Client: City of Norman
 Program: ADA Self-Evaluation and Transition Plan
 KHA No.: 061298800

Date: 4/30/18
 Prepared By: CMP
 Checked By: EPE

Corridor: 24th Ave NW
 Project Name: Intersection of 24th Ave NW and driveway (Lat. 35.2311; Long. -97.4804)
 City: Norman

GPS ID: 90096

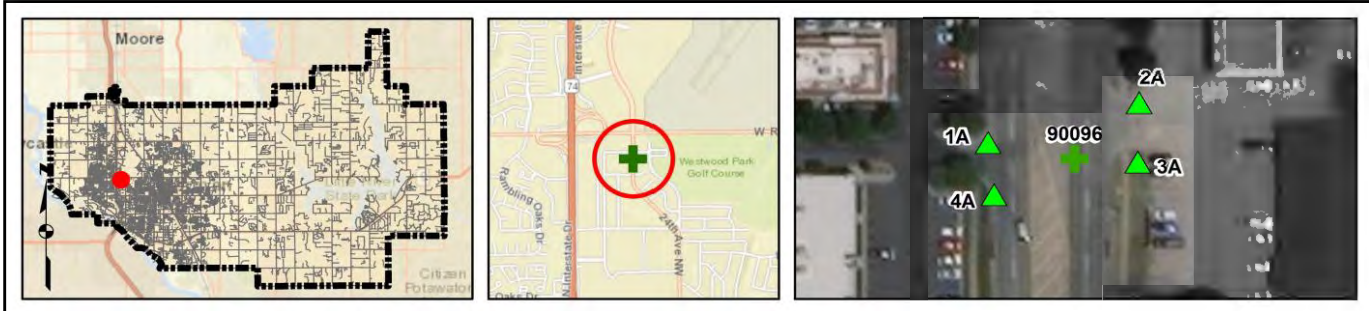
Item No.	Item Description	Quantity	Unit	Unit Price	Item Cost
ODOT 202(A)-0183	Unclassified Excavation	0	CY	\$ 5.50	\$ -
ODOT 609(A)-0300	Concrete Curb (6" Barrier-Integral)	0	LF	\$ 7.00	\$ -
ODOT 610(A)-0602	4" Concrete Sidewalk	30	SY	\$ 50.00	\$ 1,500.00
ODOT 610(I)-4610	Tactile Warning Device - New	40	SF	\$ 25.00	\$ 1,000.00
ODOT 610(I)-4615	Tactile Warning Device - Retrofit	0	SF	\$ 60.00	\$ -
ODOT 619(B)-4792	Removal of Sidewalk	38	SY	\$ 12.00	\$ 456.00
ODOT 857(F)-8006	Pavement Marking Removal (Traffic Stripe)	0	LF	\$ 0.25	\$ -
---	Crosswalk Pavement Markings	0	LF	\$ 6.00	\$ -
---	Repave Roadway	0	LS	\$ 5,000.00	\$ -
---	Fix Ponding	0	LS	\$ 2,000.00	\$ -
---	Fix Curb Ramp Transition	4	LS	\$ 2,000.00	\$ 8,000.00
---	Median Nose Modification	0	LS	\$ 5,000.00	\$ -
---	Remove Temporary Obstruction	0	LS	\$ 500.00	\$ -
---	Fix Curb Ramp Counter Slope	0	LS	\$ 2,000.00	\$ -

Basis for Cost Projection

- No Design Completed
- Preliminary Design
- Final Design

Subtotal:	\$	10,956.00
Engineering: (% +/-)	15%	\$ 1,733.14
Contingency: (% +/-)	20%	\$ 2,310.86
Estimated Project Cost:	\$	15,000.00

Project Location



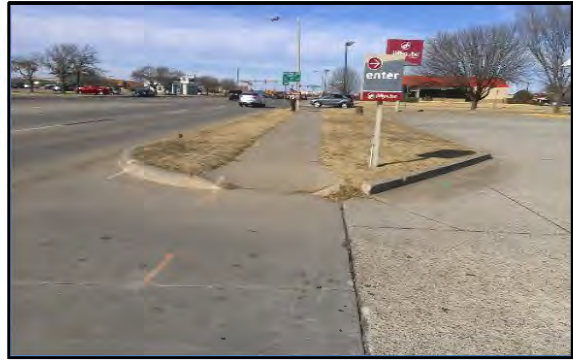
Field Observations

Intersection Issues	Crosswalk				Possible Solutions
	N	E	S	W	
Path of travel pavement condition					All driveway path of travel issues and possible solutions provided in driveway shapefile (TRPEDDRV)
Path of travel running slope is greater than 5%					
Path of travel cross slope is greater than 2% for stop control approaches					
Path of travel cross slope is greater than 5% for free-flow approaches					
Crosswalk width is less than 6'					
Crosswalk striping condition					

Curb Ramp Issues	Curb Ramp ID ('z' or 'l' in ramp label indicates no existing ramp)				Possible Solutions
	1A	2A	3A	4A	
Curb ramp does not exist and is needed					Remove and replace curb ramp
Curb ramp does not land in crosswalk					
No 4' x 4' clear space at base of curb ramp					
Curbed side is not 90° or has traversable adjacent surface	X	X	X	X	
Flare cross slope is greater than 10%					
Curb ramp running slope is greater than 8.3%	X	X			
Blended transition running slope is greater than 5%					
Cut-thru ramp running slope is greater than 5%					
Curb ramp cross slope is greater than 2%	X	X	X	X	
Cut-thru ramp cross slope is greater than 2%					
Curb ramp width is less than 48"	X	X			
Cut-thru ramp width is less than 60"					
Permanent obstruction (>0.25') in curb ramp/landing/flares	X				For intersection, commercial driveway, and park ramps, install color truncated domes
Temporary obstruction (>0.25') in curb ramp/landing/flares					
No textured surface at base of curb ramp	X	X	X	X	
No color contrast at base of curb ramp	X	X	X	X	
Landing area does not exist and is needed					
Landing area is less than 5' x 5' or slopes greater than 2%		X	X	X	Remove and replace landing area Fix curb ramp transition
Curb ramp transition onto roadway is greater than 0.25'	X	X	X	X	
Counter slope of the gutter or street at the foot of the curb ramp is greater than 5%					
Ponding occurs at base of curb ramp					



Ramp 1A



Ramp 2A



Ramp 3A



Ramp 4A

Opinion of Probable Construction Cost Disclaimer:

The Engineer has no control over the cost of labor, materials, equipment, or over the Contractor's methods of determining prices or over competitive bidding or market conditions. Opinions of probable costs provided herein are based on the information known to Engineer at this time and represent only the Engineer's judgment as a design professional familiar with the construction industry. The Engineer cannot and does not guarantee that proposals, bids, or actual construction costs will not vary from its opinions of probable costs.

Project Location Map Sources:

Esri, DeLorme, NAVTEQ, USGS, Intermap, iPC, NRCAN, Esri Japan, METI, Esri China (Hong Kong), Esri (Thailand), TomTom, 2013, DigitalGlobe, GeoEye, i-cubed, USDA, AEX, Getmapping, Aerogrip, IGN, IGP, swisstopo, and the GIS User Community

Client: City of Norman
 Program: ADA Self-Evaluation and Transition Plan
 KHA No.: 061298800

Date: 4/30/18
 Prepared By: CMP
 Checked By: EPE

Corridor: 24th Ave NW
 Project Name: Intersection of 24th Ave NW and driveway (Lat. 35.2322; Long. -97.4804)
 City: Norman

GPS ID: 90097

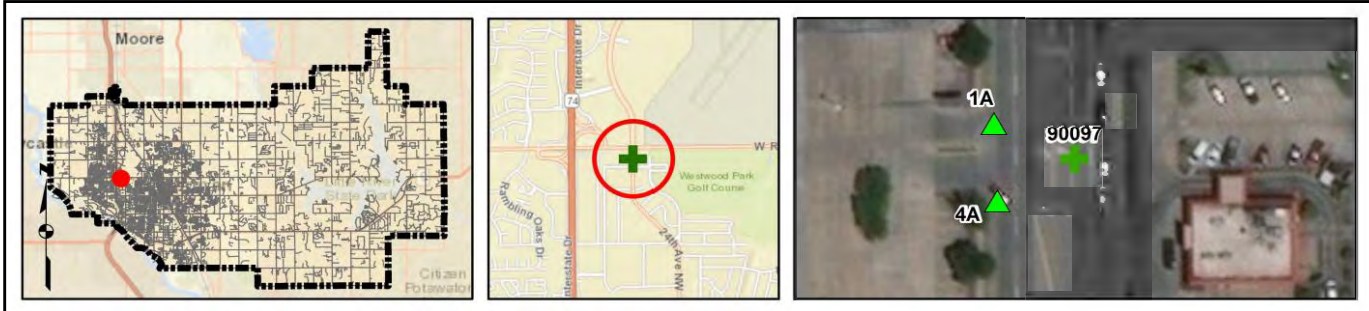
Item No.	Item Description	Quantity	Unit	Unit Price	Item Cost
ODOT 202(A)-0183	Unclassified Excavation	0	CY	\$ 5.50	\$ -
ODOT 609(A)-0300	Concrete Curb (6" Barrier-Integral)	0	LF	\$ 7.00	\$ -
ODOT 610(A)-0602	4" Concrete Sidewalk	15	SY	\$ 50.00	\$ 750.00
ODOT 610(I)-4610	Tactile Warning Device - New	20	SF	\$ 25.00	\$ 500.00
ODOT 610(I)-4615	Tactile Warning Device - Retrofit	0	SF	\$ 60.00	\$ -
ODOT 619(B)-4792	Removal of Sidewalk	18	SY	\$ 12.00	\$ 216.00
ODOT 857(F)-8006	Pavement Marking Removal (Traffic Stripe)	0	LF	\$ 0.25	\$ -
---	Crosswalk Pavement Markings	0	LF	\$ 6.00	\$ -
---	Repave Roadway	0	LS	\$ 5,000.00	\$ -
---	Fix Ponding	0	LS	\$ 2,000.00	\$ -
---	Fix Curb Ramp Transition	2	LS	\$ 2,000.00	\$ 4,000.00
---	Median Nose Modification	0	LS	\$ 5,000.00	\$ -
---	Remove Temporary Obstruction	0	LS	\$ 500.00	\$ -
---	Fix Curb Ramp Counter Slope	0	LS	\$ 2,000.00	\$ -

Basis for Cost Projection

- No Design Completed
- Preliminary Design
- Final Design

Subtotal:	\$	5,466.00
Engineering: (% +/-)	15%	\$ 1,086.00
Contingency: (% +/-)	20%	\$ 1,448.00
Estimated Project Cost:	\$	8,000.00

Project Location



Field Observations

Intersection Issues	Crosswalk				Possible Solutions
	N	E	S	W	
Path of travel pavement condition					All driveway path of travel issues and possible solutions provided in driveway shapefile (TRPEDDRV)
Path of travel running slope is greater than 5%					
Path of travel cross slope is greater than 2% for stop control approaches					
Path of travel cross slope is greater than 5% for free-flow approaches					
Crosswalk width is less than 6'					
Crosswalk striping condition					

Curb Ramp Issues	Curb Ramp ID ('z' or 'l' in ramp label indicates no existing ramp)		Possible Solutions
	1A	4A	
Curb ramp does not exist and is needed			Remove and replace curb ramp
Curb ramp does not land in crosswalk			
No 4' x 4' clear space at base of curb ramp			
Curbed side is not 90° or has traversable adjacent surface	X	X	
Flare cross slope is greater than 10%			
Curb ramp running slope is greater than 8.3%	X		
Blended transition running slope is greater than 5%			
Cut-thru ramp running slope is greater than 5%			
Curb ramp cross slope is greater than 2%	X	X	
Cut-thru ramp cross slope is greater than 2%			
Curb ramp width is less than 48"	X	X	For intersection, commercial driveway, and park ramps, install color truncated domes
Cut-thru ramp width is less than 60"			
Permanent obstruction (>0.25') in curb ramp/landing/flares	X		
Temporary obstruction (>0.25') in curb ramp/landing/flares			
No textured surface at base of curb ramp	X	X	
No color contrast at base of curb ramp	X	X	
Landing area does not exist and is needed			
Landing area is less than 5' x 5' or slopes greater than 2%		X	
Curb ramp transition onto roadway is greater than 0.25'	X	X	
Counter slope of the gutter or street at the foot of the curb ramp is greater than 5%			
Ponding occurs at base of curb ramp			



Ramp 1A



Ramp 4A

Opinion of Probable Construction Cost Disclaimer:

The Engineer has no control over the cost of labor, materials, equipment, or over the Contractor's methods of determining prices or over competitive bidding or market conditions. Opinions of probable costs provided herein are based on the information known to Engineer at this time and represent only the Engineer's judgment as a design professional familiar with the construction industry. The Engineer cannot and does not guarantee that proposals, bids, or actual construction costs will not vary from its opinions of probable costs.

Project Location Map Sources:

Esri, DeLorme, NAVTEQ, USGS, Intermap, iPC, NRCAN, Esri Japan, METI, Esri China (Hong Kong), Esri (Thailand), TomTom, 2013, DigitalGlobe, GeoEye, i-cubed, USDA, AEX, Getmapping, Aerogrip, IGN, IGP, swisstopo, and the GIS User Community

Client: City of Norman
 Program: ADA Self-Evaluation and Transition Plan
 KHA No.: 061298800

Date: 4/30/18
 Prepared By: CMP
 Checked By: EPE

Corridor : 24th Ave NW
 Project Name: Intersection of 24th Ave NW and driveway (Lat. 35.2324; Long. -97.4804)
 City: Norman

GPS ID: 90098

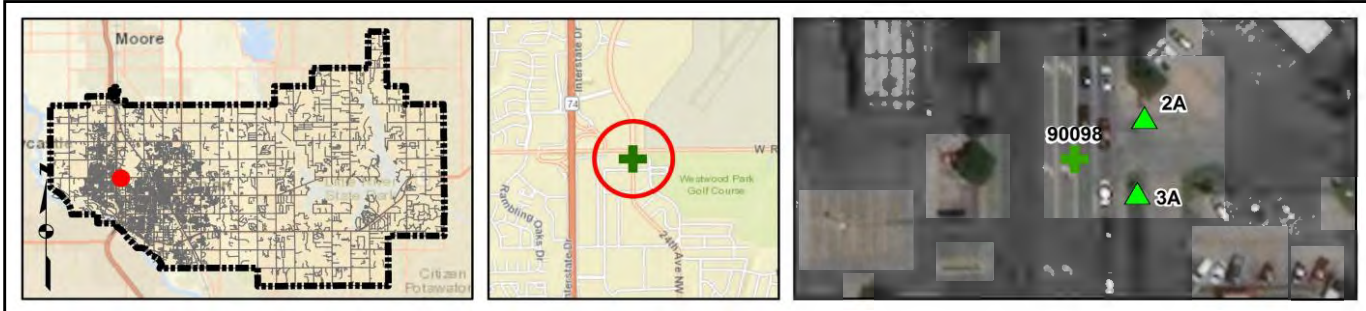
Item No.	Item Description	Quantity	Unit	Unit Price	Item Cost
ODOT 202(A)-0183	Unclassified Excavation	0	CY	\$ 5.50	\$ -
ODOT 609(A)-0300	Concrete Curb (6" Barrier-Integral)	0	LF	\$ 7.00	\$ -
ODOT 610(A)-0602	4" Concrete Sidewalk	15	SY	\$ 50.00	\$ 750.00
ODOT 610(I)-4610	Tactile Warning Device - New	20	SF	\$ 25.00	\$ 500.00
ODOT 610(I)-4615	Tactile Warning Device - Retrofit	0	SF	\$ 60.00	\$ -
ODOT 619(B)-4792	Removal of Sidewalk	18	SY	\$ 12.00	\$ 216.00
ODOT 857(F)-8006	Pavement Marking Removal (Traffic Stripe)	0	LF	\$ 0.25	\$ -
---	Crosswalk Pavement Markings	0	LF	\$ 6.00	\$ -
---	Repave Roadway	0	LS	\$ 5,000.00	\$ -
---	Fix Ponding	0	LS	\$ 2,000.00	\$ -
---	Fix Curb Ramp Transition	1	LS	\$ 2,000.00	\$ 2,000.00
---	Median Nose Modification	0	LS	\$ 5,000.00	\$ -
---	Remove Temporary Obstruction	0	LS	\$ 500.00	\$ -
---	Fix Curb Ramp Counter Slope	0	LS	\$ 2,000.00	\$ -

Basis for Cost Projection

- No Design Completed
- Preliminary Design
- Final Design

Subtotal:	\$	3,466.00
Engineering: (% +/-)	15%	\$ 657.43
Contingency: (% +/-)	20%	\$ 876.57
Estimated Project Cost:	\$	5,000.00

Project Location



Field Observations

Intersection Issues	Crosswalk				Possible Solutions
	N	E	S	W	
Path of travel pavement condition					All driveway path of travel issues and possible solutions provided in driveway shapefile (TRPEDDRV)
Path of travel running slope is greater than 5%					
Path of travel cross slope is greater than 2% for stop control approaches					
Path of travel cross slope is greater than 5% for free-flow approaches					
Crosswalk width is less than 6'					
Crosswalk striping condition					

Curb Ramp Issues	Curb Ramp ID ('z' or 'l' in ramp label indicates no existing ramp)		Possible Solutions
	2A	3A	
Curb ramp does not exist and is needed			Remove and replace curb ramp
Curb ramp does not land in crosswalk			
No 4' x 4' clear space at base of curb ramp			
Curbed side is not 90° or has traversable adjacent surface		X	
Flare cross slope is greater than 10%			
Curb ramp running slope is greater than 8.3%			
Blended transition running slope is greater than 5%			
Cut-thru ramp running slope is greater than 5%			
Curb ramp cross slope is greater than 2%	X	X	
Cut-thru ramp cross slope is greater than 2%			
Curb ramp width is less than 48"			For intersection, commercial driveway, and park ramps, install color truncated domes
Cut-thru ramp width is less than 60"			
Permanent obstruction (>0.25') in curb ramp/landing/flares	X		
Temporary obstruction (>0.25') in curb ramp/landing/flares			
No textured surface at base of curb ramp		X	
No color contrast at base of curb ramp		X	
Landing area does not exist and is needed			
Landing area is less than 5' x 5' or slopes greater than 2%	X		
Curb ramp transition onto roadway is greater than 0.25'		X	
Counter slope of the gutter or street at the foot of the curb ramp is greater than 5%			
Ponding occurs at base of curb ramp			



Ramp 2A



Ramp 3A

Opinion of Probable Construction Cost Disclaimer:

The Engineer has no control over the cost of labor, materials, equipment, or over the Contractor's methods of determining prices or over competitive bidding or market conditions. Opinions of probable costs provided herein are based on the information known to Engineer at this time and represent only the Engineer's judgment as a design professional familiar with the construction industry. The Engineer cannot and does not guarantee that proposals, bids, or actual construction costs will not vary from its opinions of probable costs.

Project Location Map Sources:

Esri, DeLorme, NAVTEQ, USGS, Intermap, iPC, NRCAN, Esri Japan, METI, Esri China (Hong Kong), Esri (Thailand), TomTom, 2013, DigitalGlobe, GeoEye, i-cubed, USDA, AEX, Getmapping, Aerogrip, IGN, IGP, swisstopo, and the GIS User Community

Client: City of Norman Date: 4/30/18
 Program: ADA Self-Evaluation and Transition Plan Prepared By: CMP
 KHA No.: 061298800 Checked By: EPE

Corridor: 24th Ave NW GPS ID: 90099
 Project Name: Intersection of 24th Ave NW and driveway (Lat. 35.232; Long. -97.4804)
 City: Norman

Item No.	Item Description	Quantity	Unit	Unit Price	Item Cost
ODOT 202(A)-0183	Unclassified Excavation	0	CY	\$ 5.50	\$ -
ODOT 609(A)-0300	Concrete Curb (6" Barrier-Integral)	0	LF	\$ 7.00	\$ -
ODOT 610(A)-0602	4" Concrete Sidewalk	15	SY	\$ 50.00	\$ 750.00
ODOT 610(I)-4610	Tactile Warning Device - New	20	SF	\$ 25.00	\$ 500.00
ODOT 610(I)-4615	Tactile Warning Device - Retrofit	0	SF	\$ 60.00	\$ -
ODOT 619(B)-4792	Removal of Sidewalk	22	SY	\$ 12.00	\$ 264.00
ODOT 857(F)-8006	Pavement Marking Removal (Traffic Stripe)	0	LF	\$ 0.25	\$ -
---	Crosswalk Pavement Markings	0	LF	\$ 6.00	\$ -
---	Repave Roadway	0	LS	\$ 5,000.00	\$ -
---	Fix Ponding	0	LS	\$ 2,000.00	\$ -
---	Fix Curb Ramp Transition	2	LS	\$ 2,000.00	\$ 4,000.00
---	Median Nose Modification	0	LS	\$ 5,000.00	\$ -
---	Remove Temporary Obstruction	0	LS	\$ 500.00	\$ -
---	Fix Curb Ramp Counter Slope	1	LS	\$ 2,000.00	\$ 2,000.00
				Subtotal:	\$ 7,514.00
				Engineering: (% +/-)	15% \$ 1,494.00
				Contingency: (% +/-)	20% \$ 1,992.00
				Estimated Project Cost:	\$ 11,000.00

Basis for Cost Projection
 No Design Completed
 Preliminary Design
 Final Design

Project Location



Field Observations

Intersection Issues	Crosswalk				Possible Solutions
	N	E	S	W	
Path of travel pavement condition					All driveway path of travel issues and possible solutions provided in driveway shapefile (TRPEDDRV)
Path of travel running slope is greater than 5%					
Path of travel cross slope is greater than 2% for stop control approaches					
Path of travel cross slope is greater than 5% for free-flow approaches					
Crosswalk width is less than 6'					
Crosswalk striping condition					

Curb Ramp Issues	Curb Ramp ID ('z' or 'l' in ramp label indicates no existing ramp)		Possible Solutions
	2A	3A	
Curb ramp does not exist and is needed			Remove and replace curb ramp
Curb ramp does not land in crosswalk			
No 4' x 4' clear space at base of curb ramp			
Curbed side is not 90° or has traversable adjacent surface	X		
Flare cross slope is greater than 10%			
Curb ramp running slope is greater than 8.3%			
Blended transition running slope is greater than 5%			
Cut-thru ramp running slope is greater than 5%			
Curb ramp cross slope is greater than 2%	X	X	
Cut-thru ramp cross slope is greater than 2%			
Curb ramp width is less than 48"		X	For intersection, commercial driveway, and park ramps, install color truncated domes
Cut-thru ramp width is less than 60"			
Permanent obstruction (>0.25') in curb ramp/landing/flares			
Temporary obstruction (>0.25') in curb ramp/landing/flares			
No textured surface at base of curb ramp	X	X	
No color contrast at base of curb ramp	X	X	
Landing area does not exist and is needed			
Landing area is less than 5' x 5' or slopes greater than 2%	X	X	
Curb ramp transition onto roadway is greater than 0.25'	X	X	
Counter slope of the gutter or street at the foot of the curb ramp is greater than 5%		X	
Ponding occurs at base of curb ramp			Remove and replace landing area Fix curb ramp transition Fix curb ramp counter slope



Ramp 2A



Ramp 3A

Opinion of Probable Construction Cost Disclaimer:

The Engineer has no control over the cost of labor, materials, equipment, or over the Contractor's methods of determining prices or over competitive bidding or market conditions. Opinions of probable costs provided herein are based on the information known to Engineer at this time and represent only the Engineer's judgment as a design professional familiar with the construction industry. The Engineer cannot and does not guarantee that proposals, bids, or actual construction costs will not vary from its opinions of probable costs.

Project Location Map Sources:

Esri, DeLorme, NAVTEQ, USGS, Intermap, iPC, NRCAN, Esri Japan, METI, Esri China (Hong Kong), Esri (Thailand), TomTom, 2013, DigitalGlobe, GeoEye, i-cubed, USDA, AEX, Getmapping, Aerogrip, IGN, IGP, swisstopo, and the GIS User Community

Client: City of Norman
 Program: ADA Self-Evaluation and Transition Plan
 KHA No.: 061298800

Date: 4/30/18
 Prepared By: CMP
 Checked By: EPE

Corridor : 24th Ave NW
 Project Name: Intersection of 24th Ave NW and driveway (Lat. 35.2247; Long. -97.4766)
 City: Norman

GPS ID: 90100

Item No.	Item Description	Quantity	Unit	Unit Price	Item Cost
ODOT 202(A)-0183	Unclassified Excavation	0	CY	\$ 5.50	\$ -
ODOT 609(A)-0300	Concrete Curb (6" Barrier-Integral)	0	LF	\$ 7.00	\$ -
ODOT 610(A)-0602	4" Concrete Sidewalk	15	SY	\$ 50.00	\$ 750.00
ODOT 610(I)-4610	Tactile Warning Device - New	20	SF	\$ 25.00	\$ 500.00
ODOT 610(I)-4615	Tactile Warning Device - Retrofit	0	SF	\$ 60.00	\$ -
ODOT 619(B)-4792	Removal of Sidewalk	18	SY	\$ 12.00	\$ 216.00
ODOT 857(F)-8006	Pavement Marking Removal (Traffic Stripe)	0	LF	\$ 0.25	\$ -
---	Crosswalk Pavement Markings	0	LF	\$ 6.00	\$ -
---	Repave Roadway	0	LS	\$ 5,000.00	\$ -
---	Fix Ponding	0	LS	\$ 2,000.00	\$ -
---	Fix Curb Ramp Transition	2	LS	\$ 2,000.00	\$ 4,000.00
---	Median Nose Modification	0	LS	\$ 5,000.00	\$ -
---	Remove Temporary Obstruction	0	LS	\$ 500.00	\$ -
---	Fix Curb Ramp Counter Slope	0	LS	\$ 2,000.00	\$ -

Basis for Cost Projection

- No Design Completed
- Preliminary Design
- Final Design

Subtotal:	\$	5,466.00
Engineering: (% +/-)	15%	\$ 1,086.00
Contingency: (% +/-)	20%	\$ 1,448.00
Estimated Project Cost:	\$	8,000.00

Project Location



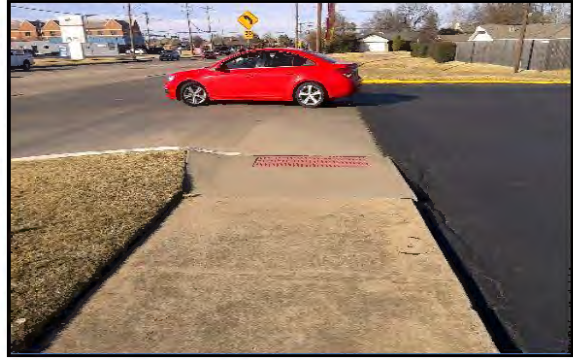
Field Observations

Intersection Issues	Crosswalk				Possible Solutions
	N	E	S	W	
Path of travel pavement condition					All driveway path of travel issues and possible solutions provided in driveway shapefile (TRPEDDRV)
Path of travel running slope is greater than 5%					
Path of travel cross slope is greater than 2% for stop control approaches					
Path of travel cross slope is greater than 5% for free-flow approaches					
Crosswalk width is less than 6'					
Crosswalk striping condition					

Curb Ramp Issues	Curb Ramp ID ('z' or 'l' in ramp label indicates no existing ramp)		Possible Solutions
	2A	3A	
Curb ramp does not exist and is needed			Remove and replace curb ramp
Curb ramp does not land in crosswalk			
No 4' x 4' clear space at base of curb ramp			
Curbed side is not 90° or has traversable adjacent surface			
Flare cross slope is greater than 10%	X	X	
Curb ramp running slope is greater than 8.3%			
Blended transition running slope is greater than 5%			
Cut-thru ramp running slope is greater than 5%			
Curb ramp cross slope is greater than 2%			
Cut-thru ramp cross slope is greater than 2%			
Curb ramp width is less than 48"			
Cut-thru ramp width is less than 60"			
Permanent obstruction (>0.25') in curb ramp/landing/flares			
Temporary obstruction (>0.25') in curb ramp/landing/flares			
No textured surface at base of curb ramp			Remove and replace landing area Fix curb ramp transition
No color contrast at base of curb ramp			
Landing area does not exist and is needed			
Landing area is less than 5' x 5' or slopes greater than 2%	X	X	
Curb ramp transition onto roadway is greater than 0.25'	X	X	
Counter slope of the gutter or street at the foot of the curb ramp is greater than 5%			
Ponding occurs at base of curb ramp			



Ramp 2A



Ramp 3A

Opinion of Probable Construction Cost Disclaimer:

The Engineer has no control over the cost of labor, materials, equipment, or over the Contractor's methods of determining prices or over competitive bidding or market conditions. Opinions of probable costs provided herein are based on the information known to Engineer at this time and represent only the Engineer's judgment as a design professional familiar with the construction industry. The Engineer cannot and does not guarantee that proposals, bids, or actual construction costs will not vary from its opinions of probable costs.

Project Location Map Sources:

Esri, DeLorme, NAVTEQ, USGS, Intermap, iPC, NRCAN, Esri Japan, METI, Esri China (Hong Kong), Esri (Thailand), TomTom, 2013, DigitalGlobe, GeoEye, i-cubed, USDA, AEX, Getmapping, Aerogrip, IGN, IGP, swisstopo, and the GIS User Community

Client: City of Norman
 Program: ADA Self-Evaluation and Transition Plan
 KHA No.: 061298800

Date: 4/30/18
 Prepared By: CMP
 Checked By: EPE

Corridor: 24th Ave NW
 Project Name: Intersection of 24th Ave NW and driveway (Lat. 35.2233; Long. -97.4767)
 City: Norman

GPS ID: 90101

Item No.	Item Description	Quantity	Unit	Unit Price	Item Cost
ODOT 202(A)-0183	Unclassified Excavation	0	CY	\$ 5.50	\$ -
ODOT 609(A)-0300	Concrete Curb (6" Barrier-Integral)	0	LF	\$ 7.00	\$ -
ODOT 610(A)-0602	4" Concrete Sidewalk	15	SY	\$ 50.00	\$ 750.00
ODOT 610(I)-4610	Tactile Warning Device - New	20	SF	\$ 25.00	\$ 500.00
ODOT 610(I)-4615	Tactile Warning Device - Retrofit	0	SF	\$ 60.00	\$ -
ODOT 619(B)-4792	Removal of Sidewalk	20	SY	\$ 12.00	\$ 240.00
ODOT 857(F)-8006	Pavement Marking Removal (Traffic Stripe)	0	LF	\$ 0.25	\$ -
---	Crosswalk Pavement Markings	0	LF	\$ 6.00	\$ -
---	Repave Roadway	0	LS	\$ 5,000.00	\$ -
---	Fix Ponding	0	LS	\$ 2,000.00	\$ -
---	Fix Curb Ramp Transition	2	LS	\$ 2,000.00	\$ 4,000.00
---	Median Nose Modification	0	LS	\$ 5,000.00	\$ -
---	Remove Temporary Obstruction	0	LS	\$ 500.00	\$ -
---	Fix Curb Ramp Counter Slope	0	LS	\$ 2,000.00	\$ -

Basis for Cost Projection

- No Design Completed
- Preliminary Design
- Final Design

Subtotal:	\$	5,490.00
Engineering: (% +/-)	15%	\$ 1,075.71
Contingency: (% +/-)	20%	\$ 1,434.29
Estimated Project Cost:	\$	8,000.00

Project Location



Field Observations

Intersection Issues	Crosswalk				Possible Solutions
	N	E	S	W	
Path of travel pavement condition					All driveway path of travel issues and possible solutions provided in driveway shapefile (TRPEDDRV)
Path of travel running slope is greater than 5%					
Path of travel cross slope is greater than 2% for stop control approaches					
Path of travel cross slope is greater than 5% for free-flow approaches					
Crosswalk width is less than 6'					
Crosswalk striping condition					

Curb Ramp Issues	Curb Ramp ID ('z' or 'l' in ramp label indicates no existing ramp)		Possible Solutions	
	2A	3A		
Curb ramp does not exist and is needed			Remove and replace curb ramp	
Curb ramp does not land in crosswalk				
No 4' x 4' clear space at base of curb ramp				
Curbed side is not 90° or has traversable adjacent surface	X			
Flare cross slope is greater than 10%				
Curb ramp running slope is greater than 8.3%				
Blended transition running slope is greater than 5%				
Cut-thru ramp running slope is greater than 5%				
Curb ramp cross slope is greater than 2%	X	X		
Cut-thru ramp cross slope is greater than 2%				
Curb ramp width is less than 48"			For intersection, commercial driveway, and park ramps, install color truncated domes	
Cut-thru ramp width is less than 60"				
Permanent obstruction (>0.25') in curb ramp/landing/flares		X		
Temporary obstruction (>0.25') in curb ramp/landing/flares				
No textured surface at base of curb ramp	X	X		
No color contrast at base of curb ramp	X	X		
Landing area does not exist and is needed				Remove and replace landing area
Landing area is less than 5' x 5' or slopes greater than 2%	X	X		
Curb ramp transition onto roadway is greater than 0.25'	X	X		
Counter slope of the gutter or street at the foot of the curb ramp is greater than 5%				Fix curb ramp transition
Ponding occurs at base of curb ramp				



Ramp 2A



Ramp 3A

Opinion of Probable Construction Cost Disclaimer:

The Engineer has no control over the cost of labor, materials, equipment, or over the Contractor's methods of determining prices or over competitive bidding or market conditions. Opinions of probable costs provided herein are based on the information known to Engineer at this time and represent only the Engineer's judgment as a design professional familiar with the construction industry. The Engineer cannot and does not guarantee that proposals, bids, or actual construction costs will not vary from its opinions of probable costs.

Project Location Map Sources:

Esri, DeLorme, NAVTEQ, USGS, Intermap, iPC, NRCAN, Esri Japan, METI, Esri China (Hong Kong), Esri (Thailand), TomTom, 2013, DigitalGlobe, GeoEye, i-cubed, USDA, AEX, Getmapping, Aerogrip, IGN, IGP, swisstopo, and the GIS User Community

Client: City of Norman
 Program: ADA Self-Evaluation and Transition Plan
 KHA No.: 061298800

Date: 4/30/18
 Prepared By: CMP
 Checked By: EPE

Corridor: E Lindsey St
 Project Name: Intersection of E Lindsey St and driveway (Lat. 35.2038; Long. -97.4207)
 City: Norman

GPS ID: 90102

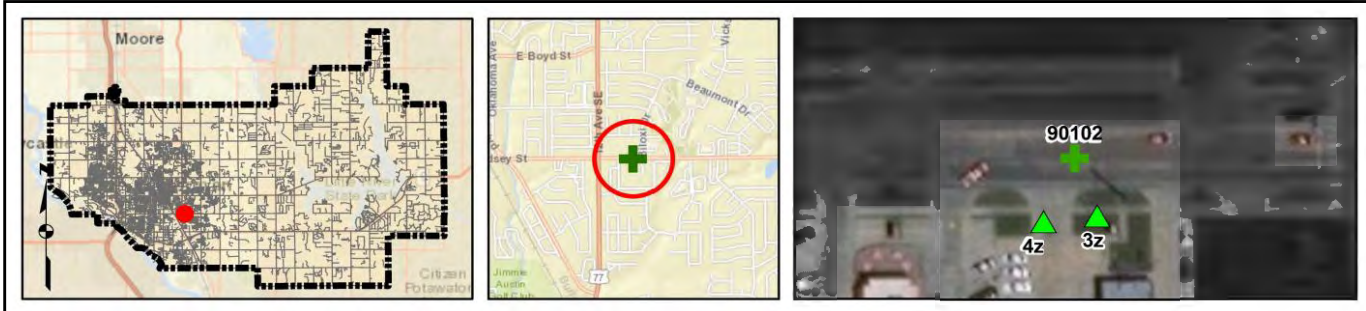
Item No.	Item Description	Quantity	Unit	Unit Price	Item Cost
ODOT 202(A)-0183	Unclassified Excavation	0	CY	\$ 5.50	\$ -
ODOT 609(A)-0300	Concrete Curb (6" Barrier-Integral)	0	LF	\$ 7.00	\$ -
ODOT 610(A)-0602	4" Concrete Sidewalk	0	SY	\$ 50.00	\$ -
ODOT 610(I)-4610	Tactile Warning Device - New	0	SF	\$ 25.00	\$ -
ODOT 610(I)-4615	Tactile Warning Device - Retrofit	20	SF	\$ 60.00	\$ 1,200.00
ODOT 619(B)-4792	Removal of Sidewalk	0	SY	\$ 12.00	\$ -
ODOT 857(F)-8006	Pavement Marking Removal (Traffic Stripe)	0	LF	\$ 0.25	\$ -
---	Crosswalk Pavement Markings	0	LF	\$ 6.00	\$ -
---	Repave Roadway	0	LS	\$ 5,000.00	\$ -
---	Fix Ponding	0	LS	\$ 2,000.00	\$ -
---	Fix Curb Ramp Transition	0	LS	\$ 2,000.00	\$ -
---	Median Nose Modification	0	LS	\$ 5,000.00	\$ -
---	Remove Temporary Obstruction	0	LS	\$ 500.00	\$ -
---	Fix Curb Ramp Counter Slope	0	LS	\$ 2,000.00	\$ -

Basis for Cost Projection

- No Design Completed
- Preliminary Design
- Final Design

Subtotal:	\$	1,200.00
Engineering: (% +/-)	15%	\$ 342.86
Contingency: (% +/-)	20%	\$ 457.14
Estimated Project Cost:	\$	2,000.00

Project Location



Field Observations

Intersection Issues	Crosswalk				Possible Solutions
	N	E	S	W	
Path of travel pavement condition					All driveway path of travel issues and possible solutions provided in driveway shapefile (TRPEDDRV)
Path of travel running slope is greater than 5%					
Path of travel cross slope is greater than 2% for stop control approaches					
Path of travel cross slope is greater than 5% for free-flow approaches					
Crosswalk width is less than 6'					
Crosswalk striping condition					

Curb Ramp Issues	Curb Ramp ID ('z' or 'l' in ramp label indicates no existing ramp)		Possible Solutions
	3z	4z	
Curb ramp does not exist and is needed			For intersection, commercial driveway, and park ramps, install color truncated domes
Curb ramp does not land in crosswalk			
No 4' x 4' clear space at base of curb ramp			
Curbed side is not 90° or has traversable adjacent surface			
Flare cross slope is greater than 10%			
Curb ramp running slope is greater than 8.3%			
Blended transition running slope is greater than 5%			
Cut-thru ramp running slope is greater than 5%			
Curb ramp cross slope is greater than 2%			
Cut-thru ramp cross slope is greater than 2%			
Curb ramp width is less than 48"			
Cut-thru ramp width is less than 60"			
Permanent obstruction (>0.25') in curb ramp/landing/flares			
Temporary obstruction (>0.25') in curb ramp/landing/flares			
No textured surface at base of curb ramp	X	X	
No color contrast at base of curb ramp	X	X	
Landing area does not exist and is needed			
Landing area is less than 5' x 5' or slopes greater than 2%			
Curb ramp transition onto roadway is greater than 0.25'			
Counter slope of the gutter or street at the foot of the curb ramp is greater than 5%			
Ponding occurs at base of curb ramp			



Corner 3 No Ramp (3z)



Corner 4 No Ramp (4z)

Opinion of Probable Construction Cost Disclaimer:

The Engineer has no control over the cost of labor, materials, equipment, or over the Contractor's methods of determining prices or over competitive bidding or market conditions. Opinions of probable costs provided herein are based on the information known to Engineer at this time and represent only the Engineer's judgment as a design professional familiar with the construction industry. The Engineer cannot and does not guarantee that proposals, bids, or actual construction costs will not vary from its opinions of probable costs.

Project Location Map Sources:

Esri, DeLorme, NAVTEQ, USGS, Intermap, iPC, NRCAN, Esri Japan, METI, Esri China (Hong Kong), Esri (Thailand), TomTom, 2013, DigitalGlobe, GeoEye, i-cubed, USDA, AEX, Getmapping, Aerogrip, IGN, IGP, swisstopo, and the GIS User Community

Client: City of Norman
 Program: ADA Self-Evaluation and Transition Plan
 KHA No.: 061298800

Date: 4/30/18
 Prepared By: CMP
 Checked By: EPE

Corridor: E Lindsey St
 Project Name: Intersection of E Lindsey St and driveway (Lat. 35.2038; Long. -97.4205)
 City: Norman

GPS ID: 90103

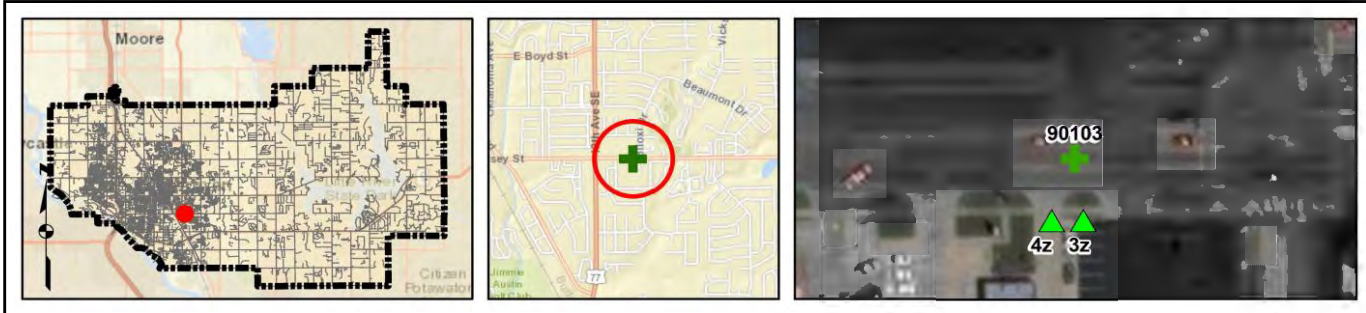
Item No.	Item Description	Quantity	Unit	Unit Price	Item Cost
ODOT 202(A)-0183	Unclassified Excavation	0	CY	\$ 5.50	\$ -
ODOT 609(A)-0300	Concrete Curb (6" Barrier-Integral)	0	LF	\$ 7.00	\$ -
ODOT 610(A)-0602	4" Concrete Sidewalk	0	SY	\$ 50.00	\$ -
ODOT 610(I)-4610	Tactile Warning Device - New	0	SF	\$ 25.00	\$ -
ODOT 610(I)-4615	Tactile Warning Device - Retrofit	20	SF	\$ 60.00	\$ 1,200.00
ODOT 619(B)-4792	Removal of Sidewalk	0	SY	\$ 12.00	\$ -
ODOT 857(F)-8006	Pavement Marking Removal (Traffic Stripe)	0	LF	\$ 0.25	\$ -
---	Crosswalk Pavement Markings	0	LF	\$ 6.00	\$ -
---	Repave Roadway	0	LS	\$ 5,000.00	\$ -
---	Fix Ponding	0	LS	\$ 2,000.00	\$ -
---	Fix Curb Ramp Transition	0	LS	\$ 2,000.00	\$ -
---	Median Nose Modification	0	LS	\$ 5,000.00	\$ -
---	Remove Temporary Obstruction	0	LS	\$ 500.00	\$ -
---	Fix Curb Ramp Counter Slope	0	LS	\$ 2,000.00	\$ -

Basis for Cost Projection

- No Design Completed
- Preliminary Design
- Final Design

Subtotal:	\$	1,200.00
Engineering: (% +/-)	15%	\$ 342.86
Contingency: (% +/-)	20%	\$ 457.14
Estimated Project Cost:	\$	2,000.00

Project Location



Field Observations

Intersection Issues	Crosswalk				Possible Solutions
	N	E	S	W	
Path of travel pavement condition					All driveway path of travel issues and possible solutions provided in driveway shapefile (TRPEDDRV)
Path of travel running slope is greater than 5%					
Path of travel cross slope is greater than 2% for stop control approaches					
Path of travel cross slope is greater than 5% for free-flow approaches					
Crosswalk width is less than 6'					
Crosswalk striping condition					

Curb Ramp Issues	Curb Ramp ID ('z' or 'l' in ramp label indicates no existing ramp)		Possible Solutions
	3z	4z	
Curb ramp does not exist and is needed			For intersection, commercial driveway, and park ramps, install color truncated domes
Curb ramp does not land in crosswalk			
No 4' x 4' clear space at base of curb ramp			
Curbed side is not 90° or has traversable adjacent surface			
Flare cross slope is greater than 10%			
Curb ramp running slope is greater than 8.3%			
Blended transition running slope is greater than 5%			
Cut-thru ramp running slope is greater than 5%			
Curb ramp cross slope is greater than 2%			
Cut-thru ramp cross slope is greater than 2%			
Curb ramp width is less than 48"			
Cut-thru ramp width is less than 60"			
Permanent obstruction (>0.25') in curb ramp/landing/flares			
Temporary obstruction (>0.25') in curb ramp/landing/flares			
No textured surface at base of curb ramp	X	X	
No color contrast at base of curb ramp	X	X	
Landing area does not exist and is needed			
Landing area is less than 5' x 5' or slopes greater than 2%			
Curb ramp transition onto roadway is greater than 0.25			
Counter slope of the gutter or street at the foot of the curb ramp is greater than 5%			
Ponding occurs at base of curb ramp			



Corner 3 No Ramp (3z)



Corner 4 No Ramp (4z)

Opinion of Probable Construction Cost Disclaimer:

The Engineer has no control over the cost of labor, materials, equipment, or over the Contractor's methods of determining prices or over competitive bidding or market conditions. Opinions of probable costs provided herein are based on the information known to Engineer at this time and represent only the Engineer's judgment as a design professional familiar with the construction industry. The Engineer cannot and does not guarantee that proposals, bids, or actual construction costs will not vary from its opinions of probable costs.

Project Location Map Sources:

Esri, DeLorme, NAVTEQ, USGS, Intermap, iPC, NRCAN, Esri Japan, METI, Esri China (Hong Kong), Esri (Thailand), TomTom, 2013, DigitalGlobe, GeoEye, i-cubed, USDA, AEX, Getmapping, Aerogrip, IGN, IGP, swisstopo, and the GIS User Community

Client: City of Norman
 Program: ADA Self-Evaluation and Transition Plan
 KHA No.: 061298800

Date: 4/30/18
 Prepared By: CMP
 Checked By: EPE

Corridor: E Lindsey St
 Project Name: Intersection of E Lindsey St and driveway (Lat. 35.2038; Long. -97.4204)
 City: Norman

GPS ID: 90104

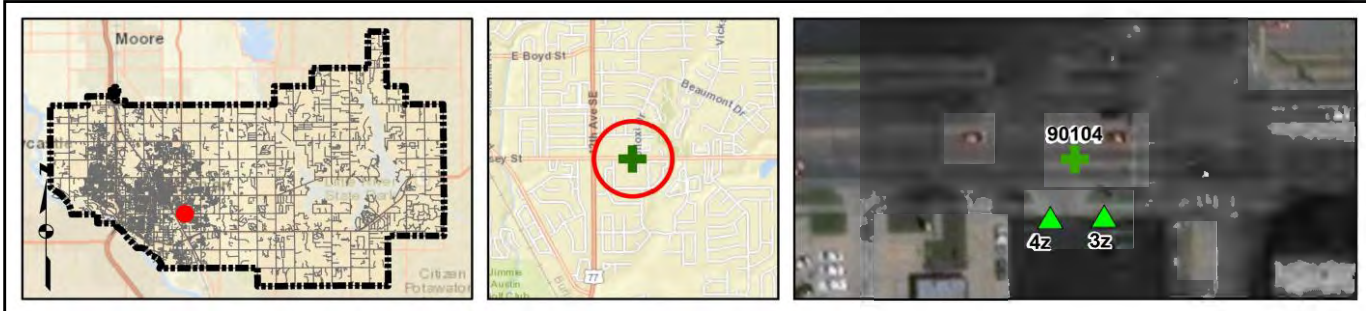
Item No.	Item Description	Quantity	Unit	Unit Price	Item Cost
ODOT 202(A)-0183	Unclassified Excavation	0	CY	\$ 5.50	\$ -
ODOT 609(A)-0300	Concrete Curb (6" Barrier-Integral)	0	LF	\$ 7.00	\$ -
ODOT 610(A)-0602	4" Concrete Sidewalk	0	SY	\$ 50.00	\$ -
ODOT 610(I)-4610	Tactile Warning Device - New	0	SF	\$ 25.00	\$ -
ODOT 610(I)-4615	Tactile Warning Device - Retrofit	20	SF	\$ 60.00	\$ 1,200.00
ODOT 619(B)-4792	Removal of Sidewalk	0	SY	\$ 12.00	\$ -
ODOT 857(F)-8006	Pavement Marking Removal (Traffic Stripe)	0	LF	\$ 0.25	\$ -
---	Crosswalk Pavement Markings	0	LF	\$ 6.00	\$ -
---	Repave Roadway	0	LS	\$ 5,000.00	\$ -
---	Fix Ponding	0	LS	\$ 2,000.00	\$ -
---	Fix Curb Ramp Transition	0	LS	\$ 2,000.00	\$ -
---	Median Nose Modification	0	LS	\$ 5,000.00	\$ -
---	Remove Temporary Obstruction	0	LS	\$ 500.00	\$ -
---	Fix Curb Ramp Counter Slope	0	LS	\$ 2,000.00	\$ -

Basis for Cost Projection

- No Design Completed
- Preliminary Design
- Final Design

Subtotal:	\$	1,200.00
Engineering: (% +/-)	15%	\$ 342.86
Contingency: (% +/-)	20%	\$ 457.14
Estimated Project Cost:	\$	2,000.00

Project Location



Field Observations

Intersection Issues	Crosswalk				Possible Solutions
	N	E	S	W	
Path of travel pavement condition					All driveway path of travel issues and possible solutions provided in driveway shapefile (TRPEDDRV)
Path of travel running slope is greater than 5%					
Path of travel cross slope is greater than 2% for stop control approaches					
Path of travel cross slope is greater than 5% for free-flow approaches					
Crosswalk width is less than 6'					
Crosswalk striping condition					

Curb Ramp Issues	Curb Ramp ID ('z' or 'l' in ramp label indicates no existing ramp)		Possible Solutions
	3z	4z	
Curb ramp does not exist and is needed			For intersection, commercial driveway, and park ramps, install color truncated domes
Curb ramp does not land in crosswalk			
No 4' x 4' clear space at base of curb ramp			
Curbed side is not 90° or has traversable adjacent surface			
Flare cross slope is greater than 10%			
Curb ramp running slope is greater than 8.3%			
Blended transition running slope is greater than 5%			
Cut-thru ramp running slope is greater than 5%			
Curb ramp cross slope is greater than 2%			
Cut-thru ramp cross slope is greater than 2%			
Curb ramp width is less than 48"			
Cut-thru ramp width is less than 60"			
Permanent obstruction (>0.25') in curb ramp/landing/flares			
Temporary obstruction (>0.25') in curb ramp/landing/flares			
No textured surface at base of curb ramp	X	X	
No color contrast at base of curb ramp	X	X	
Landing area does not exist and is needed			
Landing area is less than 5' x 5' or slopes greater than 2%			
Curb ramp transition onto roadway is greater than 0.25'			
Counter slope of the gutter or street at the foot of the curb ramp is greater than 5%			
Ponding occurs at base of curb ramp			



Corner 3 No Ramp (3z)



Corner 4 No Ramp (4z)

Opinion of Probable Construction Cost Disclaimer:

The Engineer has no control over the cost of labor, materials, equipment, or over the Contractor's methods of determining prices or over competitive bidding or market conditions. Opinions of probable costs provided herein are based on the information known to Engineer at this time and represent only the Engineer's judgment as a design professional familiar with the construction industry. The Engineer cannot and does not guarantee that proposals, bids, or actual construction costs will not vary from its opinions of probable costs.

Project Location Map Sources:

Esri, DeLorme, NAVTEQ, USGS, Intermap, iPC, NRCAN, Esri Japan, METI, Esri China (Hong Kong), Esri (Thailand), TomTom, 2013, DigitalGlobe, GeoEye, i-cubed, USDA, AEX, Getmapping, Aerogrip, IGN, IGP, swisstopo, and the GIS User Community

Client: City of Norman
 Program: ADA Self-Evaluation and Transition Plan
 KHA No.: 061298800

Date: 4/30/18
 Prepared By: CMP
 Checked By: EPE

Corridor: E Lindsey St
 Project Name: Intersection of E Lindsey St and driveway (Lat. 35.2039; Long. -97.41)
 City: norman

GPS ID: 90108

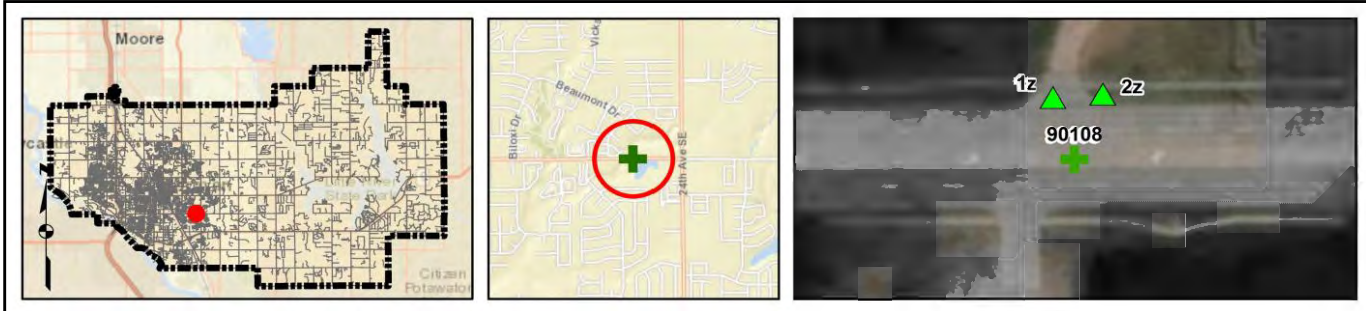
Item No.	Item Description	Quantity	Unit	Unit Price	Item Cost
ODOT 202(A)-0183	Unclassified Excavation	0	CY	\$ 5.50	\$ -
ODOT 609(A)-0300	Concrete Curb (6" Barrier-Integral)	0	LF	\$ 7.00	\$ -
ODOT 610(A)-0602	4" Concrete Sidewalk	0	SY	\$ 50.00	\$ -
ODOT 610(I)-4610	Tactile Warning Device - New	0	SF	\$ 25.00	\$ -
ODOT 610(I)-4615	Tactile Warning Device - Retrofit	20	SF	\$ 60.00	\$ 1,200.00
ODOT 619(B)-4792	Removal of Sidewalk	0	SY	\$ 12.00	\$ -
ODOT 857(F)-8006	Pavement Marking Removal (Traffic Stripe)	0	LF	\$ 0.25	\$ -
---	Crosswalk Pavement Markings	0	LF	\$ 6.00	\$ -
---	Repave Roadway	0	LS	\$ 5,000.00	\$ -
---	Fix Ponding	0	LS	\$ 2,000.00	\$ -
---	Fix Curb Ramp Transition	0	LS	\$ 2,000.00	\$ -
---	Median Nose Modification	0	LS	\$ 5,000.00	\$ -
---	Remove Temporary Obstruction	0	LS	\$ 500.00	\$ -
---	Fix Curb Ramp Counter Slope	0	LS	\$ 2,000.00	\$ -

Basis for Cost Projection

- No Design Completed
- Preliminary Design
- Final Design

Subtotal:	\$	1,200.00
Engineering: (% +/-)	15%	\$ 342.86
Contingency: (% +/-)	20%	\$ 457.14
Estimated Project Cost:	\$	2,000.00

Project Location



Field Observations

Intersection Issues	Crosswalk				Possible Solutions
	N	E	S	W	
Path of travel pavement condition					All driveway path of travel issues and possible solutions provided in driveway shapefile (TRPEDDRV)
Path of travel running slope is greater than 5%					
Path of travel cross slope is greater than 2% for stop control approaches					
Path of travel cross slope is greater than 5% for free-flow approaches					
Crosswalk width is less than 6'					
Crosswalk striping condition					

Curb Ramp Issues	Curb Ramp ID ('z' or 'l' in ramp label indicates no existing ramp)		Possible Solutions
	1z	2z	
Curb ramp does not exist and is needed			For intersection, commercial driveway, and park ramps, install color truncated domes
Curb ramp does not land in crosswalk			
No 4' x 4' clear space at base of curb ramp			
Curbed side is not 90° or has traversable adjacent surface			
Flare cross slope is greater than 10%			
Curb ramp running slope is greater than 8.3%			
Blended transition running slope is greater than 5%			
Cut-thru ramp running slope is greater than 5%			
Curb ramp cross slope is greater than 2%			
Cut-thru ramp cross slope is greater than 2%			
Curb ramp width is less than 48"			
Cut-thru ramp width is less than 60"			
Permanent obstruction (>0.25') in curb ramp/landing/flares			
Temporary obstruction (>0.25') in curb ramp/landing/flares			
No textured surface at base of curb ramp	X	X	
No color contrast at base of curb ramp	X	X	
Landing area does not exist and is needed			
Landing area is less than 5' x 5' or slopes greater than 2%			
Curb ramp transition onto roadway is greater than 0.25			
Counter slope of the gutter or street at the foot of the curb ramp is greater than 5%			
Ponding occurs at base of curb ramp			



Corner 1 No Ramp (1z)



Corner 2 No Ramp (2z)

Opinion of Probable Construction Cost Disclaimer:

The Engineer has no control over the cost of labor, materials, equipment, or over the Contractor's methods of determining prices or over competitive bidding or market conditions. Opinions of probable costs provided herein are based on the information known to Engineer at this time and represent only the Engineer's judgment as a design professional familiar with the construction industry. The Engineer cannot and does not guarantee that proposals, bids, or actual construction costs will not vary from its opinions of probable costs.

Project Location Map Sources:

Esri, DeLorme, NAVTEQ, USGS, Intermap, iPC, NRCAN, Esri Japan, METI, Esri China (Hong Kong), Esri (Thailand), TomTom, 2013, DigitalGlobe, GeoEye, i-cubed, USDA, AEX, Getmapping, Aerogrip, IGN, IGP, swisstopo, and the GIS User Community

Kimley-Horn and Associates, Inc.

Priority: 13

Project Description for Unsignalized Intersection

Client: City of Norman
 Program: ADA Self-Evaluation and Transition Plan
 KHA No.: 061298800

Date: 4/30/18
 Prepared By: CMP
 Checked By: EPE

Corridor: E Lindsey St
 Project Name: Intersection of E Lindsey St and driveway (Lat. 35.2038; Long. -97.4125)
 City: Norman

GPS ID: 90109

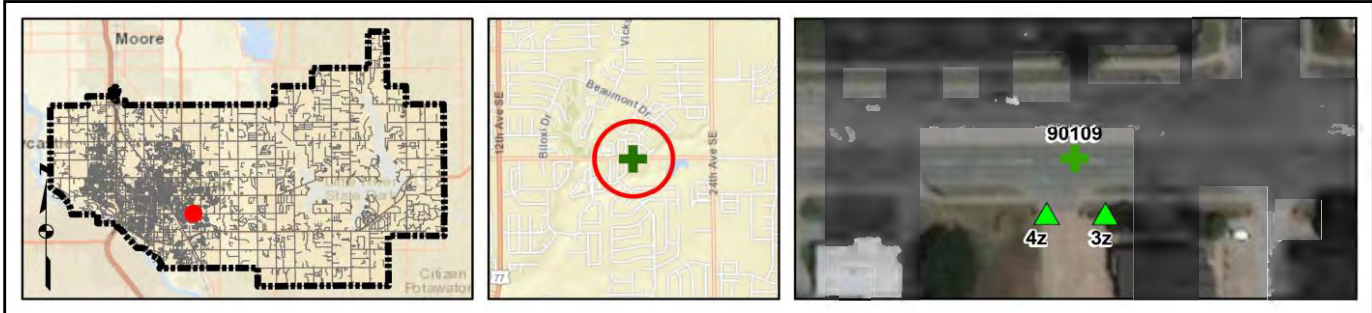
Item No.	Item Description	Quantity	Unit	Unit Price	Item Cost
ODOT 202(A)-0183	Unclassified Excavation	0	CY	\$ 5.50	\$ -
ODOT 609(A)-0300	Concrete Curb (6" Barrier-Integral)	0	LF	\$ 7.00	\$ -
ODOT 610(A)-0602	4" Concrete Sidewalk	0	SY	\$ 50.00	\$ -
ODOT 610(I)-4610	Tactile Warning Device - New	0	SF	\$ 25.00	\$ -
ODOT 610(I)-4615	Tactile Warning Device - Retrofit	20	SF	\$ 60.00	\$ 1,200.00
ODOT 619(B)-4792	Removal of Sidewalk	0	SY	\$ 12.00	\$ -
ODOT 857(F)-8006	Pavement Marking Removal (Traffic Stripe)	0	LF	\$ 0.25	\$ -
---	Crosswalk Pavement Markings	0	LF	\$ 6.00	\$ -
---	Repave Roadway	0	LS	\$ 5,000.00	\$ -
---	Fix Ponding	0	LS	\$ 2,000.00	\$ -
---	Fix Curb Ramp Transition	0	LS	\$ 2,000.00	\$ -
---	Median Nose Modification	0	LS	\$ 5,000.00	\$ -
---	Remove Temporary Obstruction	0	LS	\$ 500.00	\$ -
---	Fix Curb Ramp Counter Slope	0	LS	\$ 2,000.00	\$ -

Basis for Cost Projection

- No Design Completed
- Preliminary Design
- Final Design

Subtotal:	\$	1,200.00
Engineering: (% +/-)	15%	\$ 342.86
Contingency: (% +/-)	20%	\$ 457.14
Estimated Project Cost:	\$	2,000.00

Project Location



Field Observations

Intersection Issues	Crosswalk				Possible Solutions
	N	E	S	W	
Path of travel pavement condition					All driveway path of travel issues and possible solutions provided in driveway shapefile (TRPEDDRV)
Path of travel running slope is greater than 5%					
Path of travel cross slope is greater than 2% for stop control approaches					
Path of travel cross slope is greater than 5% for free-flow approaches					
Crosswalk width is less than 6'					
Crosswalk striping condition					

Curb Ramp Issues	Curb Ramp ID ('z' or 'l' in ramp label indicates no existing ramp)		Possible Solutions
	3z	4z	
Curb ramp does not exist and is needed			For intersection, commercial driveway, and park ramps, install color truncated domes
Curb ramp does not land in crosswalk			
No 4' x 4' clear space at base of curb ramp			
Curbed side is not 90° or has traversable adjacent surface			
Flare cross slope is greater than 10%			
Curb ramp running slope is greater than 8.3%			
Blended transition running slope is greater than 5%			
Cut-thru ramp running slope is greater than 5%			
Curb ramp cross slope is greater than 2%			
Cut-thru ramp cross slope is greater than 2%			
Curb ramp width is less than 48"			
Cut-thru ramp width is less than 60"			
Permanent obstruction (>0.25') in curb ramp/landing/flares			
Temporary obstruction (>0.25') in curb ramp/landing/flares			
No textured surface at base of curb ramp	X	X	
No color contrast at base of curb ramp	X	X	
Landing area does not exist and is needed			
Landing area is less than 5' x 5' or slopes greater than 2%			
Curb ramp transition onto roadway is greater than 0.25'			
Counter slope of the gutter or street at the foot of the curb ramp is greater than 5%			
Ponding occurs at base of curb ramp			



Corner 3 No Ramp (3z)



Corner 4 No Ramp (4z)

Opinion of Probable Construction Cost Disclaimer:

The Engineer has no control over the cost of labor, materials, equipment, or over the Contractor's methods of determining prices or over competitive bidding or market conditions. Opinions of probable costs provided herein are based on the information known to Engineer at this time and represent only the Engineer's judgment as a design professional familiar with the construction industry. The Engineer cannot and does not guarantee that proposals, bids, or actual construction costs will not vary from its opinions of probable costs.

Project Location Map Sources:

Esri, DeLorme, NAVTEQ, USGS, Intermap, iPC, NRCAN, Esri Japan, METI, Esri China (Hong Kong), Esri (Thailand), TomTom, 2013, DigitalGlobe, GeoEye, i-cubed, USDA, AEX, Getmapping, Aerogrip, IGN, IGP, swisstopo, and the GIS User Community

Kimley-Horn and Associates, Inc.

Priority: 2

Project Description for Unsignalized Intersection

Client: City of Norman
 Program: ADA Self-Evaluation and Transition Plan
 KHA No.: 061298800

Date: 4/30/18
 Prepared By: CMP
 Checked By: EPE

Corridor: 24th Ave SW
 Project Name: Intersection of 24th Ave SW and driveway (Lat. 35.2103; Long. -97.4766)
 City: Norman

GPS ID: 90110

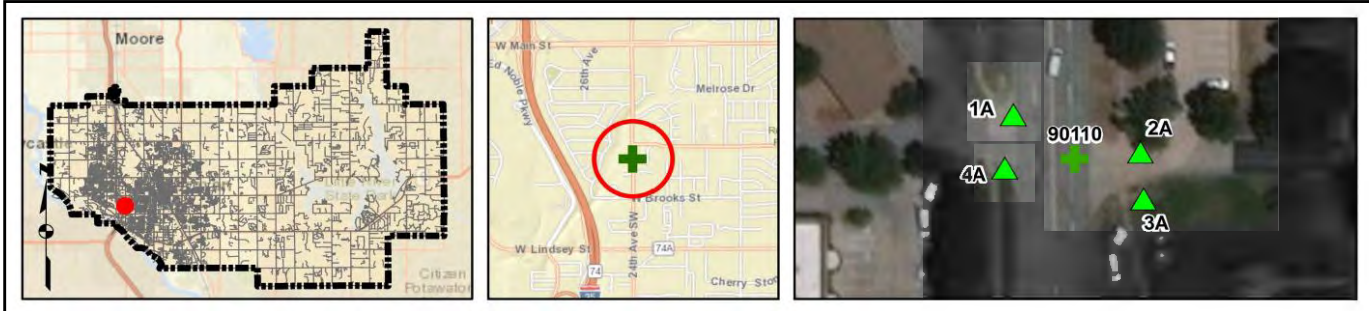
Item No.	Item Description	Quantity	Unit	Unit Price	Item Cost
ODOT 202(A)-0183	Unclassified Excavation	0	CY	\$ 5.50	\$ -
ODOT 609(A)-0300	Concrete Curb (6" Barrier-Integral)	0	LF	\$ 7.00	\$ -
ODOT 610(A)-0602	4" Concrete Sidewalk	30	SY	\$ 50.00	\$ 1,500.00
ODOT 610(I)-4610	Tactile Warning Device - New	40	SF	\$ 25.00	\$ 1,000.00
ODOT 610(I)-4615	Tactile Warning Device - Retrofit	0	SF	\$ 60.00	\$ -
ODOT 619(B)-4792	Removal of Sidewalk	38	SY	\$ 12.00	\$ 456.00
ODOT 857(F)-8006	Pavement Marking Removal (Traffic Stripe)	0	LF	\$ 0.25	\$ -
---	Crosswalk Pavement Markings	0	LF	\$ 6.00	\$ -
---	Repave Roadway	0	LS	\$ 5,000.00	\$ -
---	Fix Ponding	0	LS	\$ 2,000.00	\$ -
---	Fix Curb Ramp Transition	3	LS	\$ 2,000.00	\$ 6,000.00
---	Median Nose Modification	0	LS	\$ 5,000.00	\$ -
---	Remove Temporary Obstruction	0	LS	\$ 500.00	\$ -
---	Fix Curb Ramp Counter Slope	0	LS	\$ 2,000.00	\$ -

Basis for Cost Projection

- No Design Completed
- Preliminary Design
- Final Design

Subtotal:	\$	8,956.00
Engineering: (% +/-)	15%	\$ 1,733.14
Contingency: (% +/-)	20%	\$ 2,310.86
Estimated Project Cost:	\$	13,000.00

Project Location



Field Observations

Intersection Issues	Crosswalk				Possible Solutions
	N	E	S	W	
Path of travel pavement condition					All driveway path of travel issues and possible solutions provided in driveway shapefile (TRPEDDRV)
Path of travel running slope is greater than 5%					
Path of travel cross slope is greater than 2% for stop control approaches					
Path of travel cross slope is greater than 5% for free-flow approaches					
Crosswalk width is less than 6'					
Crosswalk striping condition					

Curb Ramp Issues	Curb Ramp ID ('z' or 'l' in ramp label indicates no existing ramp)				Possible Solutions
	1A	2A	3A	4A	
Curb ramp does not exist and is needed					Remove and replace curb ramp
Curb ramp does not land in crosswalk					
No 4' x 4' clear space at base of curb ramp					
Curbed side is not 90° or has traversable adjacent surface	X			X	
Flare cross slope is greater than 10%					
Curb ramp running slope is greater than 8.3%		X			
Blended transition running slope is greater than 5%					
Cut-thru ramp running slope is greater than 5%					
Curb ramp cross slope is greater than 2%	X	X	X	X	
Cut-thru ramp cross slope is greater than 2%					
Curb ramp width is less than 48"			X		
Cut-thru ramp width is less than 60"					
Permanent obstruction (>0.25') in curb ramp/landing/flares			X	X	
Temporary obstruction (>0.25') in curb ramp/landing/flares					
No textured surface at base of curb ramp	X	X	X	X	For intersection, commercial driveway, and park ramps, install color truncated domes
No color contrast at base of curb ramp	X	X	X	X	
Landing area does not exist and is needed					Remove and replace landing area Fix curb ramp transition
Landing area is less than 5' x 5' or slopes greater than 2%		X	X	X	
Curb ramp transition onto roadway is greater than 0.25'		X	X	X	
Counter slope of the gutter or street at the foot of the curb ramp is greater than 5%					
Ponding occurs at base of curb ramp					



Ramp 1A



Ramp 2A



Ramp 3A



Ramp 4A

Opinion of Probable Construction Cost Disclaimer:

The Engineer has no control over the cost of labor, materials, equipment, or over the Contractor's methods of determining prices or over competitive bidding or market conditions. Opinions of probable costs provided herein are based on the information known to Engineer at this time and represent only the Engineer's judgment as a design professional familiar with the construction industry. The Engineer cannot and does not guarantee that proposals, bids, or actual construction costs will not vary from its opinions of probable costs.

Project Location Map Sources:

Esri, DeLorme, NAVTEQ, USGS, Intermap, iPC, NRCAN, Esri Japan, METI, Esri China (Hong Kong), Esri (Thailand), TomTom, 2013, DigitalGlobe, GeoEye, i-cubed, USDA, AEX, Getmapping, Aerogrip, IGN, IGP, swisstopo, and the GIS User Community

Kimley-Horn and Associates, Inc.

Priority: 5

Project Description for Unsignalized Intersection

Client: City of Norman
 Program: ADA Self-Evaluation and Transition Plan
 KHA No.: 061298800

Date: 4/30/18
 Prepared By: CMP
 Checked By: EPE

Corridor : 24th Ave SW
 Project Name: Intersection of 24th Ave SW and driveway (Lat. 35.2099; Long. -97.4766)
 City: Norman

GPS ID: 90111

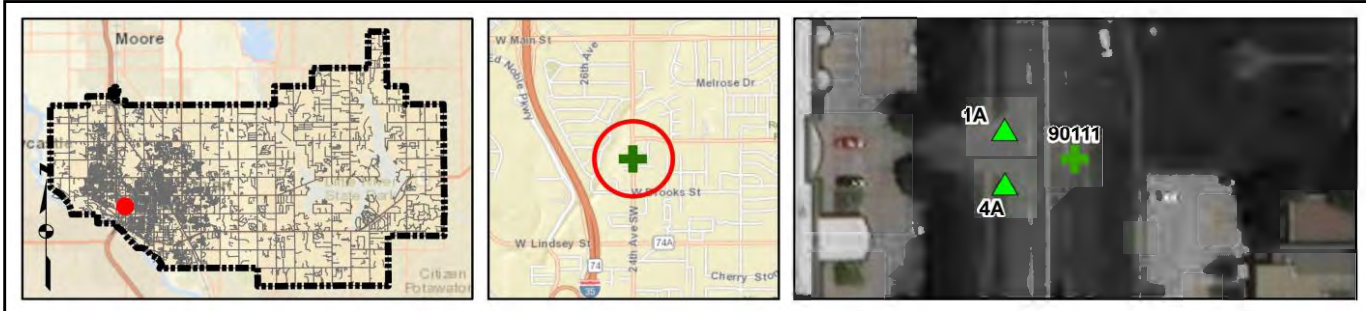
Item No.	Item Description	Quantity	Unit	Unit Price	Item Cost
ODOT 202(A)-0183	Unclassified Excavation	0	CY	\$ 5.50	\$ -
ODOT 609(A)-0300	Concrete Curb (6" Barrier-Integral)	0	LF	\$ 7.00	\$ -
ODOT 610(A)-0602	4" Concrete Sidewalk	15	SY	\$ 50.00	\$ 750.00
ODOT 610(I)-4610	Tactile Warning Device - New	20	SF	\$ 25.00	\$ 500.00
ODOT 610(I)-4615	Tactile Warning Device - Retrofit	0	SF	\$ 60.00	\$ -
ODOT 619(B)-4792	Removal of Sidewalk	21	SY	\$ 12.00	\$ 252.00
ODOT 857(F)-8006	Pavement Marking Removal (Traffic Stripe)	0	LF	\$ 0.25	\$ -
---	Crosswalk Pavement Markings	0	LF	\$ 6.00	\$ -
---	Repave Roadway	0	LS	\$ 5,000.00	\$ -
---	Fix Ponding	0	LS	\$ 2,000.00	\$ -
---	Fix Curb Ramp Transition	2	LS	\$ 2,000.00	\$ 4,000.00
---	Median Nose Modification	0	LS	\$ 5,000.00	\$ -
---	Remove Temporary Obstruction	0	LS	\$ 500.00	\$ -
---	Fix Curb Ramp Counter Slope	0	LS	\$ 2,000.00	\$ -

Basis for Cost Projection

- No Design Completed
- Preliminary Design
- Final Design

Subtotal:	\$	5,502.00
Engineering: (% +/-)	15%	\$ 1,070.57
Contingency: (% +/-)	20%	\$ 1,427.43
Estimated Project Cost:	\$	8,000.00

Project Location



Field Observations

Intersection Issues	Crosswalk				Possible Solutions
	N	E	S	W	
Path of travel pavement condition					All driveway path of travel issues and possible solutions provided in driveway shapefile (TRPEDDRV)
Path of travel running slope is greater than 5%					
Path of travel cross slope is greater than 2% for stop control approaches					
Path of travel cross slope is greater than 5% for free-flow approaches					
Crosswalk width is less than 6'					
Crosswalk striping condition					

Curb Ramp Issues	Curb Ramp ID ('z' or 'l' in ramp label indicates no existing ramp)		Possible Solutions	
	1A	4A		
Curb ramp does not exist and is needed			Remove and replace curb ramp	
Curb ramp does not land in crosswalk				
No 4' x 4' clear space at base of curb ramp				
Curbed side is not 90° or has traversable adjacent surface	X	X		
Flare cross slope is greater than 10%				
Curb ramp running slope is greater than 8.3%		X		
Blended transition running slope is greater than 5%				
Cut-thru ramp running slope is greater than 5%				
Curb ramp cross slope is greater than 2%		X		
Cut-thru ramp cross slope is greater than 2%				
Curb ramp width is less than 48"	X	X	For intersection, commercial driveway, and park ramps, install color truncated domes	
Cut-thru ramp width is less than 60"				
Permanent obstruction (>0.25') in curb ramp/landing/flares				
Temporary obstruction (>0.25') in curb ramp/landing/flares				
No textured surface at base of curb ramp	X	X		
No color contrast at base of curb ramp	X	X		
Landing area does not exist and is needed				Remove and replace landing area
Landing area is less than 5' x 5' or slopes greater than 2%	X	X		
Curb ramp transition onto roadway is greater than 0.25'	X	X		
Counter slope of the gutter or street at the foot of the curb ramp is greater than 5%				Fix curb ramp transition
Ponding occurs at base of curb ramp				



Ramp 1A



Ramp 4A

Opinion of Probable Construction Cost Disclaimer:

The Engineer has no control over the cost of labor, materials, equipment, or over the Contractor's methods of determining prices or over competitive bidding or market conditions. Opinions of probable costs provided herein are based on the information known to Engineer at this time and represent only the Engineer's judgment as a design professional familiar with the construction industry. The Engineer cannot and does not guarantee that proposals, bids, or actual construction costs will not vary from its opinions of probable costs.

Project Location Map Sources:

Esri, DeLorme, NAVTEQ, USGS, Intermap, iPC, NRCAN, Esri Japan, METI, Esri China (Hong Kong), Esri (Thailand), TomTom, 2013, DigitalGlobe, GeoEye, i-cubed, USDA, AEX, Getmapping, Aerogrip, IGN, IGP, swisstopo, and the GIS User Community

Kimley-Horn and Associates, Inc.

Priority: 5

Project Description for Unsignalized Intersection

Client: City of Norman
 Program: ADA Self-Evaluation and Transition Plan
 KHA No.: 061298800

Date: 4/30/18
 Prepared By: CMP
 Checked By: EPE

Corridor : 24th Ave SW
 Project Name: Intersection of 24th Ave SW and driveway (Lat. 35.2096; Long. -97.4766)
 City: Norman

GPS ID: 90112

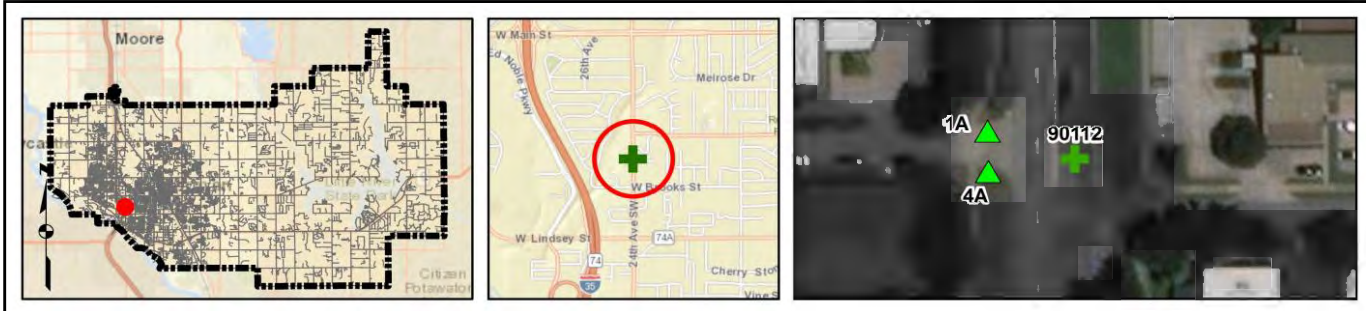
Item No.	Item Description	Quantity	Unit	Unit Price	Item Cost
ODOT 202(A)-0183	Unclassified Excavation	0	CY	\$ 5.50	\$ -
ODOT 609(A)-0300	Concrete Curb (6" Barrier-Integral)	0	LF	\$ 7.00	\$ -
ODOT 610(A)-0602	4" Concrete Sidewalk	15	SY	\$ 50.00	\$ 750.00
ODOT 610(I)-4610	Tactile Warning Device - New	20	SF	\$ 25.00	\$ 500.00
ODOT 610(I)-4615	Tactile Warning Device - Retrofit	0	SF	\$ 60.00	\$ -
ODOT 619(B)-4792	Removal of Sidewalk	21	SY	\$ 12.00	\$ 252.00
ODOT 857(F)-8006	Pavement Marking Removal (Traffic Stripe)	0	LF	\$ 0.25	\$ -
---	Crosswalk Pavement Markings	0	LF	\$ 6.00	\$ -
---	Repave Roadway	0	LS	\$ 5,000.00	\$ -
---	Fix Ponding	0	LS	\$ 2,000.00	\$ -
---	Fix Curb Ramp Transition	1	LS	\$ 2,000.00	\$ 2,000.00
---	Median Nose Modification	0	LS	\$ 5,000.00	\$ -
---	Remove Temporary Obstruction	0	LS	\$ 500.00	\$ -
---	Fix Curb Ramp Counter Slope	0	LS	\$ 2,000.00	\$ -

Basis for Cost Projection

- No Design Completed
- Preliminary Design
- Final Design

Subtotal:	\$	3,502.00
Engineering: (% +/-)	15%	\$ 642.00
Contingency: (% +/-)	20%	\$ 856.00
Estimated Project Cost:	\$	5,000.00

Project Location



Field Observations

Intersection Issues	Crosswalk				Possible Solutions
	N	E	S	W	
Path of travel pavement condition					All driveway path of travel issues and possible solutions provided in driveway shapefile (TRPEDDRV)
Path of travel running slope is greater than 5%					
Path of travel cross slope is greater than 2% for stop control approaches					
Path of travel cross slope is greater than 5% for free-flow approaches					
Crosswalk width is less than 6'					
Crosswalk striping condition					

Curb Ramp Issues	Curb Ramp ID ('z' or 'l' in ramp label indicates no existing ramp)		Possible Solutions	
	1A	4A		
Curb ramp does not exist and is needed			Remove and replace curb ramp	
Curb ramp does not land in crosswalk				
No 4' x 4' clear space at base of curb ramp				
Curbed side is not 90° or has traversable adjacent surface	X	X		
Flare cross slope is greater than 10%				
Curb ramp running slope is greater than 8.3%				
Blended transition running slope is greater than 5%				
Cut-thru ramp running slope is greater than 5%				
Curb ramp cross slope is greater than 2%	X			
Cut-thru ramp cross slope is greater than 2%				
Curb ramp width is less than 48"			For intersection, commercial driveway, and park ramps, install color truncated domes	
Cut-thru ramp width is less than 60"				
Permanent obstruction (>0.25') in curb ramp/landing/flares				
Temporary obstruction (>0.25') in curb ramp/landing/flares				
No textured surface at base of curb ramp	X	X		
No color contrast at base of curb ramp	X	X		
Landing area does not exist and is needed				Remove and replace landing area
Landing area is less than 5' x 5' or slopes greater than 2%	X	X		
Curb ramp transition onto roadway is greater than 0.25'		X		
Counter slope of the gutter or street at the foot of the curb ramp is greater than 5%				Fix curb ramp transition
Ponding occurs at base of curb ramp				



Ramp 1A



Ramp 4A

Opinion of Probable Construction Cost Disclaimer:

The Engineer has no control over the cost of labor, materials, equipment, or over the Contractor's methods of determining prices or over competitive bidding or market conditions. Opinions of probable costs provided herein are based on the information known to Engineer at this time and represent only the Engineer's judgment as a design professional familiar with the construction industry. The Engineer cannot and does not guarantee that proposals, bids, or actual construction costs will not vary from its opinions of probable costs.

Project Location Map Sources:

Esri, DeLorme, NAVTEQ, USGS, Intermap, iPC, NRCAN, Esri Japan, METI, Esri China (Hong Kong), Esri (Thailand), TomTom, 2013, DigitalGlobe, GeoEye, i-cubed, USDA, AEX, Getmapping, Aerogrip, IGN, IGP, swisstopo, and the GIS User Community

Client: City of Norman
 Program: ADA Self-Evaluation and Transition Plan
 KHA No.: 061298800

Date: 4/30/18
 Prepared By: CMP
 Checked By: EPE

Corridor: 24th Ave SW
 Project Name: Intersection of 24th Ave SW and driveway (Lat. 35.2088; Long. -97.4766)
 City: Norman

GPS ID: 90113

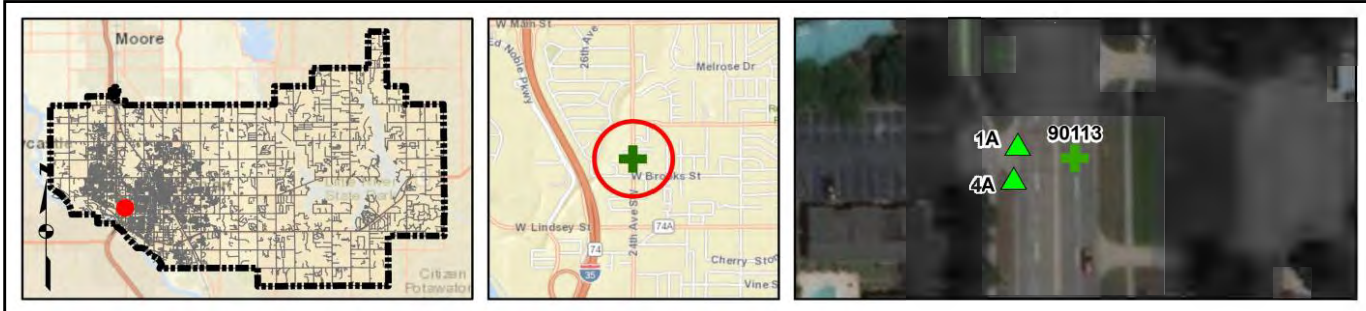
Item No.	Item Description	Quantity	Unit	Unit Price	Item Cost
ODOT 202(A)-0183	Unclassified Excavation	0	CY	\$ 5.50	\$ -
ODOT 609(A)-0300	Concrete Curb (6" Barrier-Integral)	0	LF	\$ 7.00	\$ -
ODOT 610(A)-0602	4" Concrete Sidewalk	15	SY	\$ 50.00	\$ 750.00
ODOT 610(I)-4610	Tactile Warning Device - New	20	SF	\$ 25.00	\$ 500.00
ODOT 610(I)-4615	Tactile Warning Device - Retrofit	0	SF	\$ 60.00	\$ -
ODOT 619(B)-4792	Removal of Sidewalk	18	SY	\$ 12.00	\$ 216.00
ODOT 857(F)-8006	Pavement Marking Removal (Traffic Stripe)	0	LF	\$ 0.25	\$ -
---	Crosswalk Pavement Markings	0	LF	\$ 6.00	\$ -
---	Repave Roadway	0	LS	\$ 5,000.00	\$ -
---	Fix Ponding	0	LS	\$ 2,000.00	\$ -
---	Fix Curb Ramp Transition	0	LS	\$ 2,000.00	\$ -
---	Median Nose Modification	0	LS	\$ 5,000.00	\$ -
---	Remove Temporary Obstruction	0	LS	\$ 500.00	\$ -
---	Fix Curb Ramp Counter Slope	0	LS	\$ 2,000.00	\$ -

Basis for Cost Projection

- No Design Completed
- Preliminary Design
- Final Design

Subtotal:	\$	1,466.00
Engineering: (% +/-)	15%	\$ 228.86
Contingency: (% +/-)	20%	\$ 305.14
Estimated Project Cost:	\$	2,000.00

Project Location



Field Observations

Intersection Issues	Crosswalk				Possible Solutions
	N	E	S	W	
Path of travel pavement condition					All driveway path of travel issues and possible solutions provided in driveway shapefile (TRPEDDRV)
Path of travel running slope is greater than 5%					
Path of travel cross slope is greater than 2% for stop control approaches					
Path of travel cross slope is greater than 5% for free-flow approaches					
Crosswalk width is less than 6'					
Crosswalk striping condition					

Curb Ramp Issues	Curb Ramp ID ('z' or 'l' in ramp label indicates no existing ramp)		Possible Solutions	
	1A	4A		
Curb ramp does not exist and is needed			Remove and replace curb ramp	
Curb ramp does not land in crosswalk				
No 4' x 4' clear space at base of curb ramp				
Curbed side is not 90° or has traversable adjacent surface	X	X		
Flare cross slope is greater than 10%				
Curb ramp running slope is greater than 8.3%		X		
Blended transition running slope is greater than 5%				
Cut-thru ramp running slope is greater than 5%				
Curb ramp cross slope is greater than 2%				
Cut-thru ramp cross slope is greater than 2%				
Curb ramp width is less than 48"			For intersection, commercial driveway, and park ramps, install color truncated domes	
Cut-thru ramp width is less than 60"				
Permanent obstruction (>0.25') in curb ramp/landing/flares		X		
Temporary obstruction (>0.25') in curb ramp/landing/flares				
No textured surface at base of curb ramp	X	X		
No color contrast at base of curb ramp	X	X		
Landing area does not exist and is needed				Remove and replace landing area
Landing area is less than 5' x 5' or slopes greater than 2%	X			
Curb ramp transition onto roadway is greater than 0.25'				
Counter slope of the gutter or street at the foot of the curb ramp is greater than 5%				
Ponding occurs at base of curb ramp				



Ramp 1A



Ramp 4A

Opinion of Probable Construction Cost Disclaimer:

The Engineer has no control over the cost of labor, materials, equipment, or over the Contractor's methods of determining prices or over competitive bidding or market conditions. Opinions of probable costs provided herein are based on the information known to Engineer at this time and represent only the Engineer's judgment as a design professional familiar with the construction industry. The Engineer cannot and does not guarantee that proposals, bids, or actual construction costs will not vary from its opinions of probable costs.

Project Location Map Sources:

Esri, DeLorme, NAVTEQ, USGS, Intermap, iPC, NRCAN, Esri Japan, METI, Esri China (Hong Kong), Esri (Thailand), TomTom, 2013, DigitalGlobe, GeoEye, i-cubed, USDA, AEX, Getmapping, Aerogrip, IGN, IGP, swisstopo, and the GIS User Community

Client: City of Norman
 Program: ADA Self-Evaluation and Transition Plan
 KHA No.: 061298800

Date: 4/30/18
 Prepared By: CMP
 Checked By: EPE

Corridor: 24th Ave SW
 Project Name: Intersection of 24th Ave SW and driveway (Lat. 35.2079; Long. -97.4766)
 City: Norman

GPS ID: 90114

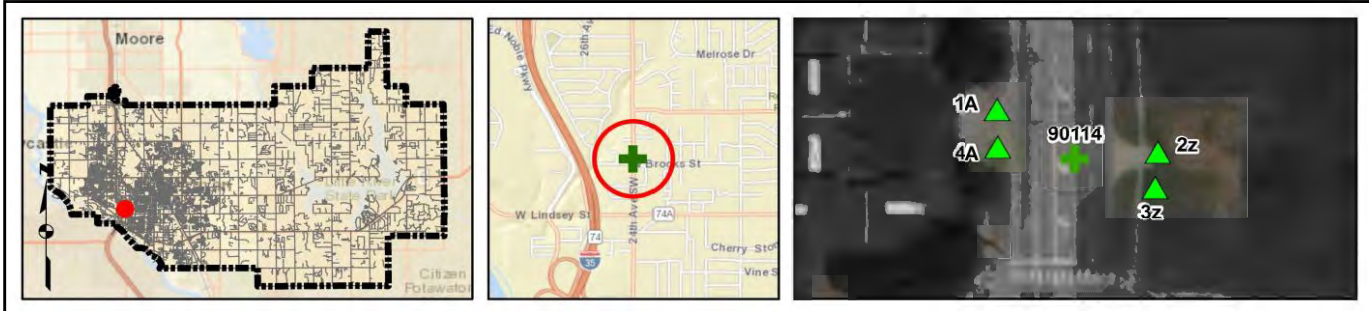
Item No.	Item Description	Quantity	Unit	Unit Price	Item Cost
ODOT 202(A)-0183	Unclassified Excavation	0	CY	\$ 5.50	\$ -
ODOT 609(A)-0300	Concrete Curb (6" Barrier-Integral)	0	LF	\$ 7.00	\$ -
ODOT 610(A)-0602	4" Concrete Sidewalk	15	SY	\$ 50.00	\$ 750.00
ODOT 610(I)-4610	Tactile Warning Device - New	20	SF	\$ 25.00	\$ 500.00
ODOT 610(I)-4615	Tactile Warning Device - Retrofit	20	SF	\$ 60.00	\$ 1,200.00
ODOT 619(B)-4792	Removal of Sidewalk	21	SY	\$ 12.00	\$ 252.00
ODOT 857(F)-8006	Pavement Marking Removal (Traffic Stripe)	0	LF	\$ 0.25	\$ -
---	Crosswalk Pavement Markings	0	LF	\$ 6.00	\$ -
---	Repave Roadway	0	LS	\$ 5,000.00	\$ -
---	Fix Ponding	0	LS	\$ 2,000.00	\$ -
---	Fix Curb Ramp Transition	0	LS	\$ 2,000.00	\$ -
---	Median Nose Modification	0	LS	\$ 5,000.00	\$ -
---	Remove Temporary Obstruction	0	LS	\$ 500.00	\$ -
---	Fix Curb Ramp Counter Slope	0	LS	\$ 2,000.00	\$ -

Basis for Cost Projection

- No Design Completed
- Preliminary Design
- Final Design

Subtotal:	\$	2,702.00
Engineering: (% +/-)	15%	\$ 556.29
Contingency: (% +/-)	20%	\$ 741.71
Estimated Project Cost:	\$	4,000.00

Project Location



Field Observations

Intersection Issues	Crosswalk				Possible Solutions
	N	E	S	W	
Path of travel pavement condition					All driveway path of travel issues and possible solutions provided in driveway shapefile (TRPEDDRV)
Path of travel running slope is greater than 5%					
Path of travel cross slope is greater than 2% for stop control approaches					
Path of travel cross slope is greater than 5% for free-flow approaches					
Crosswalk width is less than 6'					
Crosswalk striping condition					

Curb Ramp Issues	Curb Ramp ID ('z' or 'l' in ramp label indicates no existing ramp)				Possible Solutions
	1A	2z	3z	4A	
Curb ramp does not exist and is needed					Remove and replace curb ramp
Curb ramp does not land in crosswalk					
No 4' x 4' clear space at base of curb ramp					
Curbed side is not 90° or has traversable adjacent surface	X			X	
Flare cross slope is greater than 10%					
Curb ramp running slope is greater than 8.3%	X			X	
Blended transition running slope is greater than 5%					
Cut-thru ramp running slope is greater than 5%					
Curb ramp cross slope is greater than 2%	X				
Cut-thru ramp cross slope is greater than 2%					
Curb ramp width is less than 48"	X				
Cut-thru ramp width is less than 60"					
Permanent obstruction (>0.25') in curb ramp/landing/flares	X			X	
Temporary obstruction (>0.25') in curb ramp/landing/flares					
No textured surface at base of curb ramp	X	X	X	X	For intersection, commercial driveway, and park ramps, install color truncated domes
No color contrast at base of curb ramp	X	X	X	X	
Landing area does not exist and is needed					Remove and replace landing area
Landing area is less than 5' x 5' or slopes greater than 2%	X			X	
Curb ramp transition onto roadway is greater than 0.25'					
Counter slope of the gutter or street at the foot of the curb ramp is greater than 5%					
Ponding occurs at base of curb ramp					



Ramp 1A



Corner 2 No Ramp (2z)



Corner 3 No Ramp (3z)



Ramp 4A

Opinion of Probable Construction Cost Disclaimer:

The Engineer has no control over the cost of labor, materials, equipment, or over the Contractor's methods of determining prices or over competitive bidding or market conditions. Opinions of probable costs provided herein are based on the information known to Engineer at this time and represent only the Engineer's judgment as a design professional familiar with the construction industry. The Engineer cannot and does not guarantee that proposals, bids, or actual construction costs will not vary from its opinions of probable costs.

Project Location Map Sources:

Esri, DeLorme, NAVTEQ, USGS, Intermap, iPC, NRCAN, Esri Japan, METI, Esri China (Hong Kong), Esri (Thailand), TomTom, 2013, DigitalGlobe, GeoEye, i-cubed, USDA, AEX, Getmapping, Aerogrip, IGN, IGP, swisstopo, and the GIS User Community

Client: City of Norman
 Program: ADA Self-Evaluation and Transition Plan
 KHA No.: 061298800

Date: 4/30/18
 Prepared By: CMP
 Checked By: EPE

Corridor : 24th Ave SW
 Project Name: Intersection of 24th Ave SW and driveway (Lat. 35.2072; Long. -97.4766)
 City: Norman

GPS ID: 90115

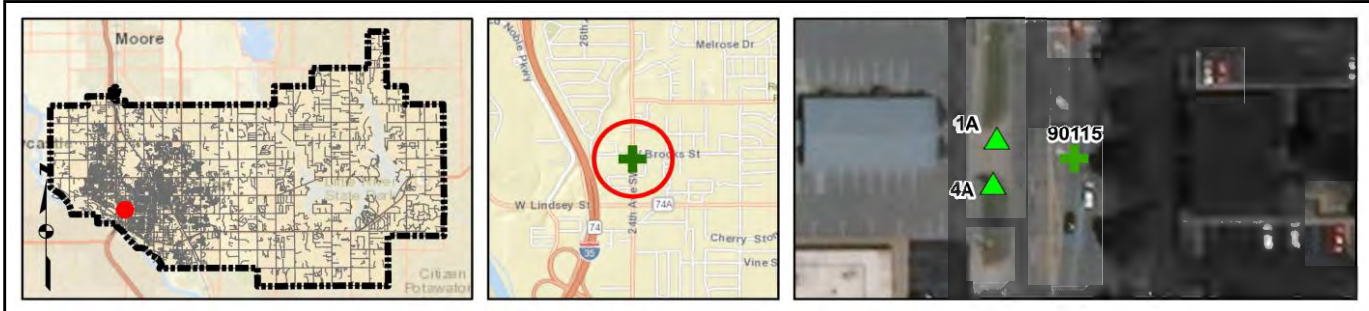
Item No.	Item Description	Quantity	Unit	Unit Price	Item Cost
ODOT 202(A)-0183	Unclassified Excavation	0	CY	\$ 5.50	\$ -
ODOT 609(A)-0300	Concrete Curb (6" Barrier-Integral)	0	LF	\$ 7.00	\$ -
ODOT 610(A)-0602	4" Concrete Sidewalk	15	SY	\$ 50.00	\$ 750.00
ODOT 610(I)-4610	Tactile Warning Device - New	20	SF	\$ 25.00	\$ 500.00
ODOT 610(I)-4615	Tactile Warning Device - Retrofit	0	SF	\$ 60.00	\$ -
ODOT 619(B)-4792	Removal of Sidewalk	21	SY	\$ 12.00	\$ 252.00
ODOT 857(F)-8006	Pavement Marking Removal (Traffic Stripe)	0	LF	\$ 0.25	\$ -
---	Crosswalk Pavement Markings	0	LF	\$ 6.00	\$ -
---	Repave Roadway	0	LS	\$ 5,000.00	\$ -
---	Fix Ponding	1	LS	\$ 2,000.00	\$ 2,000.00
---	Fix Curb Ramp Transition	2	LS	\$ 2,000.00	\$ 4,000.00
---	Median Nose Modification	0	LS	\$ 5,000.00	\$ -
---	Remove Temporary Obstruction	0	LS	\$ 500.00	\$ -
---	Fix Curb Ramp Counter Slope	0	LS	\$ 2,000.00	\$ -

Basis for Cost Projection

- No Design Completed
- Preliminary Design
- Final Design

Subtotal:	\$	7,502.00
Engineering: (% +/-)	15%	\$ 1,499.14
Contingency: (% +/-)	20%	\$ 1,998.86
Estimated Project Cost:	\$	11,000.00

Project Location



Field Observations

Intersection Issues	Crosswalk				Possible Solutions
	N	E	S	W	
Path of travel pavement condition					All driveway path of travel issues and possible solutions provided in driveway shapefile (TRPEDDRV)
Path of travel running slope is greater than 5%					
Path of travel cross slope is greater than 2% for stop control approaches					
Path of travel cross slope is greater than 5% for free-flow approaches					
Crosswalk width is less than 6'					
Crosswalk striping condition					

Curb Ramp Issues	Curb Ramp ID ('z' or 'l' in ramp label indicates no existing ramp)		Possible Solutions	
	1A	4A		
Curb ramp does not exist and is needed			Remove and replace curb ramp	
Curb ramp does not land in crosswalk				
No 4' x 4' clear space at base of curb ramp				
Curbed side is not 90° or has traversable adjacent surface	X	X		
Flare cross slope is greater than 10%				
Curb ramp running slope is greater than 8.3%		X		
Blended transition running slope is greater than 5%				
Cut-thru ramp running slope is greater than 5%				
Curb ramp cross slope is greater than 2%	X	X		
Cut-thru ramp cross slope is greater than 2%				
Curb ramp width is less than 48"			For intersection, commercial driveway, and park ramps, install color truncated domes	
Cut-thru ramp width is less than 60"				
Permanent obstruction (>0.25') in curb ramp/landing/flares				
Temporary obstruction (>0.25') in curb ramp/landing/flares				
No textured surface at base of curb ramp	X	X		
No color contrast at base of curb ramp	X	X		
Landing area does not exist and is needed				Remove and replace landing area
Landing area is less than 5' x 5' or slopes greater than 2%	X	X		
Curb ramp transition onto roadway is greater than 0.25'	X	X		Fix curb ramp transition
Counter slope of the gutter or street at the foot of the curb ramp is greater than 5%				Fix ponding
Ponding occurs at base of curb ramp		X		



Ramp 1A



Ramp 4A

Opinion of Probable Construction Cost Disclaimer:

The Engineer has no control over the cost of labor, materials, equipment, or over the Contractor's methods of determining prices or over competitive bidding or market conditions. Opinions of probable costs provided herein are based on the information known to Engineer at this time and represent only the Engineer's judgment as a design professional familiar with the construction industry. The Engineer cannot and does not guarantee that proposals, bids, or actual construction costs will not vary from its opinions of probable costs.

Project Location Map Sources:

Esri, DeLorme, NAVTEQ, USGS, Intermap, iPC, NRCAN, Esri Japan, METI, Esri China (Hong Kong), Esri (Thailand), TomTom, 2013, DigitalGlobe, GeoEye, i-cubed, USDA, AEX, Getmapping, Aerogrip, IGN, IGP, swisstopo, and the GIS User Community

Client: City of Norman
 Program: ADA Self-Evaluation and Transition Plan
 KHA No.: 061298800

Date: 4/30/18
 Prepared By: CMP
 Checked By: EPE

Corridor : 24th Ave SW
 Project Name: Intersection of 24th Ave SW and driveway (Lat. 35.207; Long. -97.4766)
 City: Norman

GPS ID: 90116

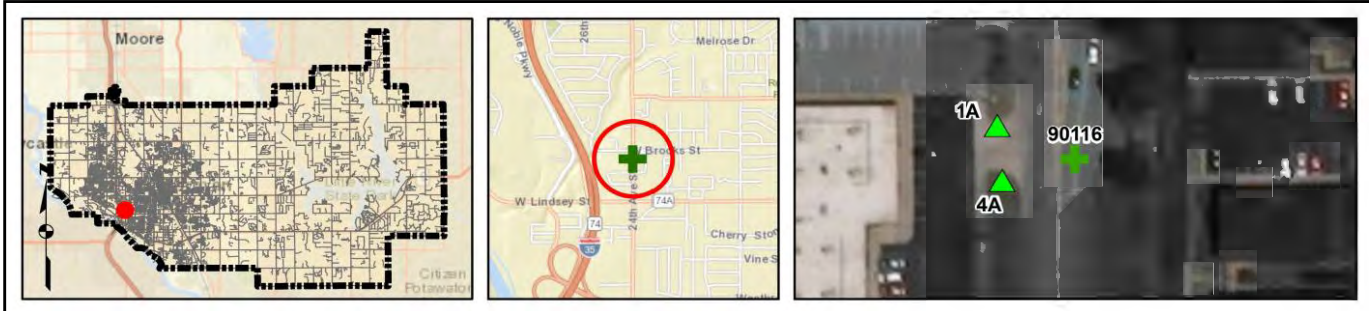
Item No.	Item Description	Quantity	Unit	Unit Price	Item Cost
ODOT 202(A)-0183	Unclassified Excavation	0	CY	\$ 5.50	\$ -
ODOT 609(A)-0300	Concrete Curb (6" Barrier-Integral)	0	LF	\$ 7.00	\$ -
ODOT 610(A)-0602	4" Concrete Sidewalk	15	SY	\$ 50.00	\$ 750.00
ODOT 610(I)-4610	Tactile Warning Device - New	20	SF	\$ 25.00	\$ 500.00
ODOT 610(I)-4615	Tactile Warning Device - Retrofit	0	SF	\$ 60.00	\$ -
ODOT 619(B)-4792	Removal of Sidewalk	21	SY	\$ 12.00	\$ 252.00
ODOT 857(F)-8006	Pavement Marking Removal (Traffic Stripe)	0	LF	\$ 0.25	\$ -
---	Crosswalk Pavement Markings	0	LF	\$ 6.00	\$ -
---	Repave Roadway	0	LS	\$ 5,000.00	\$ -
---	Fix Ponding	0	LS	\$ 2,000.00	\$ -
---	Fix Curb Ramp Transition	2	LS	\$ 2,000.00	\$ 4,000.00
---	Median Nose Modification	0	LS	\$ 5,000.00	\$ -
---	Remove Temporary Obstruction	0	LS	\$ 500.00	\$ -
---	Fix Curb Ramp Counter Slope	0	LS	\$ 2,000.00	\$ -

Basis for Cost Projection

- No Design Completed
- Preliminary Design
- Final Design

Subtotal:	\$	5,502.00
Engineering: (% +/-)	15%	\$ 1,070.57
Contingency: (% +/-)	20%	\$ 1,427.43
Estimated Project Cost:	\$	8,000.00

Project Location



Field Observations

Intersection Issues	Crosswalk				Possible Solutions
	N	E	S	W	
Path of travel pavement condition					All driveway path of travel issues and possible solutions provided in driveway shapefile (TRPEDDRV)
Path of travel running slope is greater than 5%					
Path of travel cross slope is greater than 2% for stop control approaches					
Path of travel cross slope is greater than 5% for free-flow approaches					
Crosswalk width is less than 6'					
Crosswalk striping condition					

Curb Ramp Issues	Curb Ramp ID ('z' or 'l' in ramp label indicates no existing ramp)		Possible Solutions	
	1A	4A		
Curb ramp does not exist and is needed			Remove and replace curb ramp	
Curb ramp does not land in crosswalk				
No 4' x 4' clear space at base of curb ramp				
Curbed side is not 90° or has traversable adjacent surface				
Flare cross slope is greater than 10%				
Curb ramp running slope is greater than 8.3%	X	X		
Blended transition running slope is greater than 5%				
Cut-thru ramp running slope is greater than 5%				
Curb ramp cross slope is greater than 2%	X	X		
Cut-thru ramp cross slope is greater than 2%				
Curb ramp width is less than 48"			For intersection, commercial driveway, and park ramps, install color truncated domes	
Cut-thru ramp width is less than 60"				
Permanent obstruction (>0.25') in curb ramp/landing/flares	X	X		
Temporary obstruction (>0.25') in curb ramp/landing/flares				
No textured surface at base of curb ramp	X	X		
No color contrast at base of curb ramp	X	X		
Landing area does not exist and is needed				Remove and replace landing area
Landing area is less than 5' x 5' or slopes greater than 2%	X	X		
Curb ramp transition onto roadway is greater than 0.25'	X	X		
Counter slope of the gutter or street at the foot of the curb ramp is greater than 5%				Fix curb ramp transition
Ponding occurs at base of curb ramp				



Ramp 1A



Ramp 4A

Opinion of Probable Construction Cost Disclaimer:

The Engineer has no control over the cost of labor, materials, equipment, or over the Contractor's methods of determining prices or over competitive bidding or market conditions. Opinions of probable costs provided herein are based on the information known to Engineer at this time and represent only the Engineer's judgment as a design professional familiar with the construction industry. The Engineer cannot and does not guarantee that proposals, bids, or actual construction costs will not vary from its opinions of probable costs.

Project Location Map Sources:

Esri, DeLorme, NAVTEQ, USGS, Intermap, iPC, NRCAN, Esri Japan, METI, Esri China (Hong Kong), Esri (Thailand), TomTom, 2013, DigitalGlobe, GeoEye, i-cubed, USDA, AEX, Getmapping, Aerogrip, IGN, IGP, swisstopo, and the GIS User Community

Kimley-Horn and Associates, Inc.

Priority: 5

Project Description for Unsignalized Intersection

Client: City of Norman
 Program: ADA Self-Evaluation and Transition Plan
 KHA No.: 061298800

Date: 4/30/18
 Prepared By: CMP
 Checked By: EPE

Corridor : 24th Ave SW
 Project Name: Intersection of 24th Ave SW and driveway (Lat. 35.2065; Long. -97.4766)
 City: Norman

GPS ID: 90117

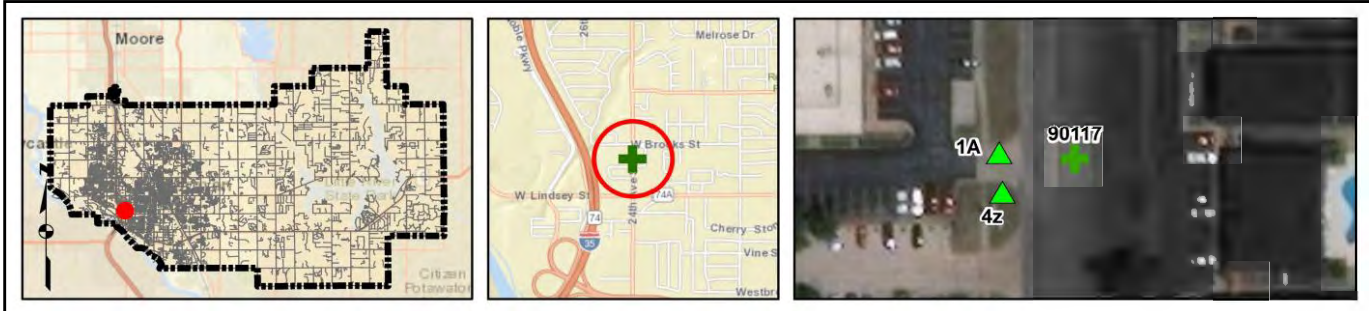
Item No.	Item Description	Quantity	Unit	Unit Price	Item Cost
ODOT 202(A)-0183	Unclassified Excavation	0	CY	\$ 5.50	\$ -
ODOT 609(A)-0300	Concrete Curb (6" Barrier-Integral)	0	LF	\$ 7.00	\$ -
ODOT 610(A)-0602	4" Concrete Sidewalk	18	SY	\$ 50.00	\$ 900.00
ODOT 610(I)-4610	Tactile Warning Device - New	20	SF	\$ 25.00	\$ 500.00
ODOT 610(I)-4615	Tactile Warning Device - Retrofit	0	SF	\$ 60.00	\$ -
ODOT 619(B)-4792	Removal of Sidewalk	11	SY	\$ 12.00	\$ 132.00
ODOT 857(F)-8006	Pavement Marking Removal (Traffic Stripe)	0	LF	\$ 0.25	\$ -
---	Crosswalk Pavement Markings	0	LF	\$ 6.00	\$ -
---	Repave Roadway	0	LS	\$ 5,000.00	\$ -
---	Fix Ponding	0	LS	\$ 2,000.00	\$ -
---	Fix Curb Ramp Transition	1	LS	\$ 2,000.00	\$ 2,000.00
---	Median Nose Modification	0	LS	\$ 5,000.00	\$ -
---	Remove Temporary Obstruction	0	LS	\$ 500.00	\$ -
---	Fix Curb Ramp Counter Slope	0	LS	\$ 2,000.00	\$ -

Basis for Cost Projection

- No Design Completed
- Preliminary Design
- Final Design

Subtotal:	\$	3,532.00
Engineering: (% +/-)	15%	\$ 629.14
Contingency: (% +/-)	20%	\$ 838.86
Estimated Project Cost:	\$	5,000.00

Project Location



Field Observations

Intersection Issues	Crosswalk				Possible Solutions
	N	E	S	W	
Path of travel pavement condition					All driveway path of travel issues and possible solutions provided in driveway shapefile (TRPEDDRV)
Path of travel running slope is greater than 5%					
Path of travel cross slope is greater than 2% for stop control approaches					
Path of travel cross slope is greater than 5% for free-flow approaches					
Crosswalk width is less than 6'					
Crosswalk striping condition					

Curb Ramp Issues	Curb Ramp ID ('z' or 'l' in ramp label indicates no existing ramp)		Possible Solutions
	1A	4z	
Curb ramp does not exist and is needed		X	Install curb ramp; if median improvement, see shapefile
Curb ramp does not land in crosswalk			
No 4' x 4' clear space at base of curb ramp			Remove and replace curb ramp
Curbed side is not 90° or has traversable adjacent surface			
Flare cross slope is greater than 10%			
Curb ramp running slope is greater than 8.3%	X		
Blended transition running slope is greater than 5%			
Cut-thru ramp running slope is greater than 5%			
Curb ramp cross slope is greater than 2%	X		
Cut-thru ramp cross slope is greater than 2%			
Curb ramp width is less than 48"			
Cut-thru ramp width is less than 60"			
Permanent obstruction (>0.25') in curb ramp/landing/flares			For intersection, commercial driveway, and park ramps, install color truncated domes
Temporary obstruction (>0.25') in curb ramp/landing/flares			
No textured surface at base of curb ramp	X		
No color contrast at base of curb ramp	X		
Landing area does not exist and is needed			
Landing area is less than 5' x 5' or slopes greater than 2%	X		Remove and replace landing area
Curb ramp transition onto roadway is greater than 0.25'	X		
Counter slope of the gutter or street at the foot of the curb ramp is greater than 5%			Fix curb ramp transition
Ponding occurs at base of curb ramp			



Ramp 1A



Corner 4 No Ramp (4z)

Opinion of Probable Construction Cost Disclaimer:

The Engineer has no control over the cost of labor, materials, equipment, or over the Contractor's methods of determining prices or over competitive bidding or market conditions. Opinions of probable costs provided herein are based on the information known to Engineer at this time and represent only the Engineer's judgment as a design professional familiar with the construction industry. The Engineer cannot and does not guarantee that proposals, bids, or actual construction costs will not vary from its opinions of probable costs.

Project Location Map Sources:

Esri, DeLorme, NAVTEQ, USGS, Intermap, iPC, NRCAN, Esri Japan, METI, Esri China (Hong Kong), Esri (Thailand), TomTom, 2013, DigitalGlobe, GeoEye, i-cubed, USDA, AEX, Getmapping, Aerogrip, IGN, IGP, swisstopo, and the GIS User Community

Client: City of Norman
 Program: ADA Self-Evaluation and Transition Plan
 KHA No.: 061298800

Date: 4/30/18
 Prepared By: CMP
 Checked By: EPE

Corridor: 24th Ave SW
 Project Name: Intersection of 24th Ave SW and driveway (Lat. 35.2063; Long. -97.4767)
 City: Norman

GPS ID: 90118

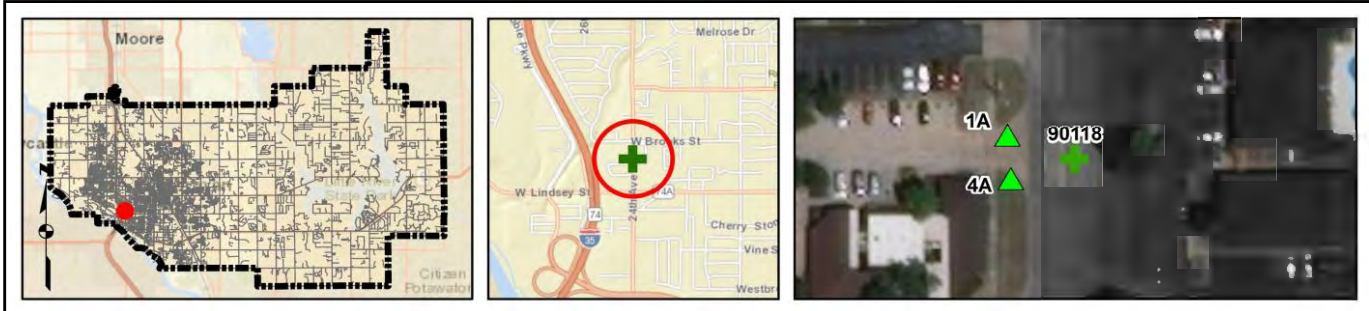
Item No.	Item Description	Quantity	Unit	Unit Price	Item Cost
ODOT 202(A)-0183	Unclassified Excavation	0	CY	\$ 5.50	\$ -
ODOT 609(A)-0300	Concrete Curb (6" Barrier-Integral)	0	LF	\$ 7.00	\$ -
ODOT 610(A)-0602	4" Concrete Sidewalk	15	SY	\$ 50.00	\$ 750.00
ODOT 610(I)-4610	Tactile Warning Device - New	20	SF	\$ 25.00	\$ 500.00
ODOT 610(I)-4615	Tactile Warning Device - Retrofit	0	SF	\$ 60.00	\$ -
ODOT 619(B)-4792	Removal of Sidewalk	21	SY	\$ 12.00	\$ 252.00
ODOT 857(F)-8006	Pavement Marking Removal (Traffic Stripe)	0	LF	\$ 0.25	\$ -
---	Crosswalk Pavement Markings	0	LF	\$ 6.00	\$ -
---	Repave Roadway	0	LS	\$ 5,000.00	\$ -
---	Fix Ponding	0	LS	\$ 2,000.00	\$ -
---	Fix Curb Ramp Transition	1	LS	\$ 2,000.00	\$ 2,000.00
---	Median Nose Modification	0	LS	\$ 5,000.00	\$ -
---	Remove Temporary Obstruction	0	LS	\$ 500.00	\$ -
---	Fix Curb Ramp Counter Slope	0	LS	\$ 2,000.00	\$ -

Basis for Cost Projection

- No Design Completed
- Preliminary Design
- Final Design

Subtotal:	\$	3,502.00
Engineering: (% +/-)	15%	\$ 642.00
Contingency: (% +/-)	20%	\$ 856.00
Estimated Project Cost:	\$	5,000.00

Project Location



Field Observations

Intersection Issues	Crosswalk				Possible Solutions
	N	E	S	W	
Path of travel pavement condition					All driveway path of travel issues and possible solutions provided in driveway shapefile (TRPEDDRV)
Path of travel running slope is greater than 5%					
Path of travel cross slope is greater than 2% for stop control approaches					
Path of travel cross slope is greater than 5% for free-flow approaches					
Crosswalk width is less than 6'					
Crosswalk striping condition					

Curb Ramp Issues	Curb Ramp ID ('z' or 'l' in ramp label indicates no existing ramp)		Possible Solutions	
	1A	4A		
Curb ramp does not exist and is needed			Remove and replace curb ramp	
Curb ramp does not land in crosswalk				
No 4' x 4' clear space at base of curb ramp				
Curbed side is not 90° or has traversable adjacent surface				
Flare cross slope is greater than 10%				
Curb ramp running slope is greater than 8.3%	X	X		
Blended transition running slope is greater than 5%				
Cut-thru ramp running slope is greater than 5%				
Curb ramp cross slope is greater than 2%	X	X		
Cut-thru ramp cross slope is greater than 2%				
Curb ramp width is less than 48"			For intersection, commercial driveway, and park ramps, install color truncated domes	
Cut-thru ramp width is less than 60"				
Permanent obstruction (>0.25') in curb ramp/landing/flare				
Temporary obstruction (>0.25') in curb ramp/landing/flare				
No textured surface at base of curb ramp	X	X		
No color contrast at base of curb ramp	X	X		
Landing area does not exist and is needed				Remove and replace landing area
Landing area is less than 5' x 5' or slopes greater than 2%	X	X		
Curb ramp transition onto roadway is greater than 0.25'		X		
Counter slope of the gutter or street at the foot of the curb ramp is greater than 5%				Fix curb ramp transition
Ponding occurs at base of curb ramp				



Ramp 1A



Ramp 4A

Opinion of Probable Construction Cost Disclaimer:

The Engineer has no control over the cost of labor, materials, equipment, or over the Contractor's methods of determining prices or over competitive bidding or market conditions. Opinions of probable costs provided herein are based on the information known to Engineer at this time and represent only the Engineer's judgment as a design professional familiar with the construction industry. The Engineer cannot and does not guarantee that proposals, bids, or actual construction costs will not vary from its opinions of probable costs.

Project Location Map Sources:

Esri, DeLorme, NAVTEQ, USGS, Intermap, iPC, NRCAN, Esri Japan, METI, Esri China (Hong Kong), Esri (Thailand), TomTom, 2013, DigitalGlobe, GeoEye, i-cubed, USDA, AEX, Getmapping, Aerogrip, IGN, IGP, swisstopo, and the GIS User Community

Client: City of Norman
 Program: ADA Self-Evaluation and Transition Plan
 KHA No.: 061298800

Date: 4/30/18
 Prepared By: CMP
 Checked By: EPE

Corridor: 24th Ave SW
 Project Name: Intersection of 24th Ave SW and driveway (Lat. 35.2055; Long. -97.4767)
 City: Norman

GPS ID: 90119

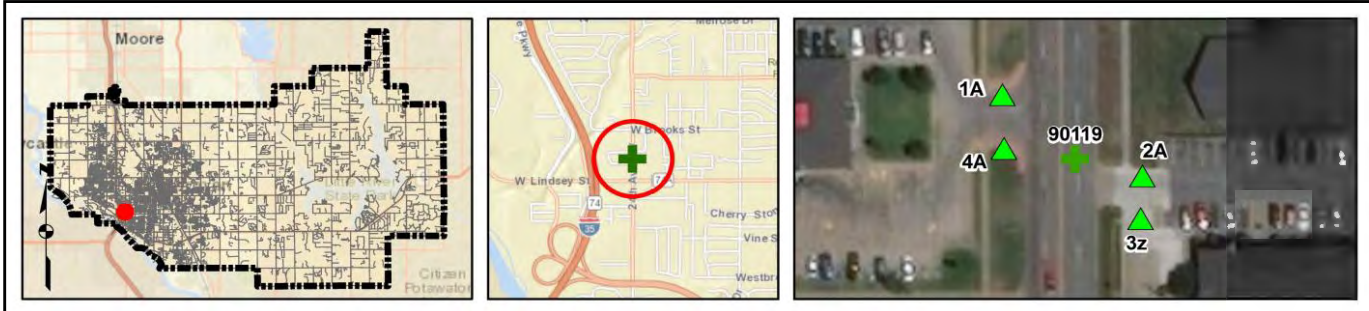
Item No.	Item Description	Quantity	Unit	Unit Price	Item Cost
ODOT 202(A)-0183	Unclassified Excavation	0	CY	\$ 5.50	\$ -
ODOT 609(A)-0300	Concrete Curb (6" Barrier-Integral)	0	LF	\$ 7.00	\$ -
ODOT 610(A)-0602	4" Concrete Sidewalk	33	SY	\$ 50.00	\$ 1,650.00
ODOT 610(I)-4610	Tactile Warning Device - New	40	SF	\$ 25.00	\$ 1,000.00
ODOT 610(I)-4615	Tactile Warning Device - Retrofit	0	SF	\$ 60.00	\$ -
ODOT 619(B)-4792	Removal of Sidewalk	28	SY	\$ 12.00	\$ 336.00
ODOT 857(F)-8006	Pavement Marking Removal (Traffic Stripe)	0	LF	\$ 0.25	\$ -
---	Crosswalk Pavement Markings	0	LF	\$ 6.00	\$ -
---	Repave Roadway	0	LS	\$ 5,000.00	\$ -
---	Fix Ponding	0	LS	\$ 2,000.00	\$ -
---	Fix Curb Ramp Transition	2	LS	\$ 2,000.00	\$ 4,000.00
---	Median Nose Modification	0	LS	\$ 5,000.00	\$ -
---	Remove Temporary Obstruction	0	LS	\$ 500.00	\$ -
---	Fix Curb Ramp Counter Slope	0	LS	\$ 2,000.00	\$ -

Basis for Cost Projection

- No Design Completed
- Preliminary Design
- Final Design

Subtotal:	\$	6,986.00
Engineering: (% +/-)	15%	\$ 1,291.71
Contingency: (% +/-)	20%	\$ 1,722.29
Estimated Project Cost:	\$	10,000.00

Project Location



Field Observations

Intersection Issues	Crosswalk				Possible Solutions
	N	E	S	W	
Path of travel pavement condition					All driveway path of travel issues and possible solutions provided in driveway shapefile (TRPEDDRV)
Path of travel running slope is greater than 5%					
Path of travel cross slope is greater than 2% for stop control approaches					
Path of travel cross slope is greater than 5% for free-flow approaches					
Crosswalk width is less than 6'					
Crosswalk striping condition					

Curb Ramp Issues	Curb Ramp ID ('z' or 'l' in ramp label indicates no existing ramp)				Possible Solutions
	1A	2A	3z	4A	
Curb ramp does not exist and is needed			X		Install curb ramp; if median improvement, see shapefile
Curb ramp does not land in crosswalk					
No 4' x 4' clear space at base of curb ramp					Remove and replace curb ramp
Curbed side is not 90° or has traversable adjacent surface	X	X			
Flare cross slope is greater than 10%					
Curb ramp running slope is greater than 8.3%	X			X	
Blended transition running slope is greater than 5%					
Cut-thru ramp running slope is greater than 5%					
Curb ramp cross slope is greater than 2%	X			X	
Cut-thru ramp cross slope is greater than 2%					
Curb ramp width is less than 48"					
Cut-thru ramp width is less than 60"					
Permanent obstruction (>0.25') in curb ramp/landing/flares					For intersection, commercial driveway, and park ramps, install color truncated domes
Temporary obstruction (>0.25') in curb ramp/landing/flares					
No textured surface at base of curb ramp		X		X	Remove and replace landing area Fix curb ramp transition
No color contrast at base of curb ramp		X		X	
Landing area does not exist and is needed					
Landing area is less than 5' x 5' or slopes greater than 2%		X		X	
Curb ramp transition onto roadway is greater than 0.25'	X			X	
Counter slope of the gutter or street at the foot of the curb ramp is greater than 5%					
Ponding occurs at base of curb ramp					



Ramp 1A



Ramp 2A



Corner 3 No Ramp (3z)



Ramp 4A

Opinion of Probable Construction Cost Disclaimer:

The Engineer has no control over the cost of labor, materials, equipment, or over the Contractor's methods of determining prices or over competitive bidding or market conditions. Opinions of probable costs provided herein are based on the information known to Engineer at this time and represent only the Engineer's judgment as a design professional familiar with the construction industry. The Engineer cannot and does not guarantee that proposals, bids, or actual construction costs will not vary from its opinions of probable costs.

Project Location Map Sources:

Esri, DeLorme, NAVTEQ, USGS, Intermap, iPC, NRCAN, Esri Japan, METI, Esri China (Hong Kong), Esri (Thailand), TomTom, 2013, DigitalGlobe, GeoEye, i-cubed, USDA, AEX, Getmapping, Aerogrip, IGN, IGP, swisstopo, and the GIS User Community

Client: City of Norman
 Program: ADA Self-Evaluation and Transition Plan
 KHA No.: 061298800

Date: 4/30/18
 Prepared By: CMP
 Checked By: EPE

Corridor : 24th Ave SW
 Project Name: Intersection of 24th Ave SW and driveway (Lat. 35.205; Long. -97.4767)
 City: Norman

GPS ID: 90120

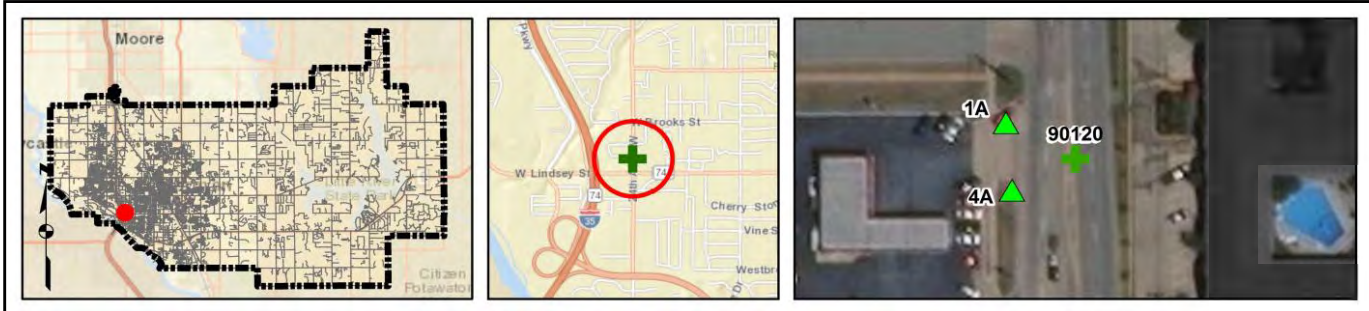
Item No.	Item Description	Quantity	Unit	Unit Price	Item Cost
ODOT 202(A)-0183	Unclassified Excavation	0	CY	\$ 5.50	\$ -
ODOT 609(A)-0300	Concrete Curb (6" Barrier-Integral)	0	LF	\$ 7.00	\$ -
ODOT 610(A)-0602	4" Concrete Sidewalk	15	SY	\$ 50.00	\$ 750.00
ODOT 610(I)-4610	Tactile Warning Device - New	20	SF	\$ 25.00	\$ 500.00
ODOT 610(I)-4615	Tactile Warning Device - Retrofit	0	SF	\$ 60.00	\$ -
ODOT 619(B)-4792	Removal of Sidewalk	21	SY	\$ 12.00	\$ 252.00
ODOT 857(F)-8006	Pavement Marking Removal (Traffic Stripe)	0	LF	\$ 0.25	\$ -
---	Crosswalk Pavement Markings	0	LF	\$ 6.00	\$ -
---	Repave Roadway	0	LS	\$ 5,000.00	\$ -
---	Fix Ponding	0	LS	\$ 2,000.00	\$ -
---	Fix Curb Ramp Transition	1	LS	\$ 2,000.00	\$ 2,000.00
---	Median Nose Modification	0	LS	\$ 5,000.00	\$ -
---	Remove Temporary Obstruction	0	LS	\$ 500.00	\$ -
---	Fix Curb Ramp Counter Slope	0	LS	\$ 2,000.00	\$ -

Basis for Cost Projection

- No Design Completed
- Preliminary Design
- Final Design

Subtotal:	\$	3,502.00
Engineering: (% +/-)	15%	\$ 642.00
Contingency: (% +/-)	20%	\$ 856.00
Estimated Project Cost:	\$	5,000.00

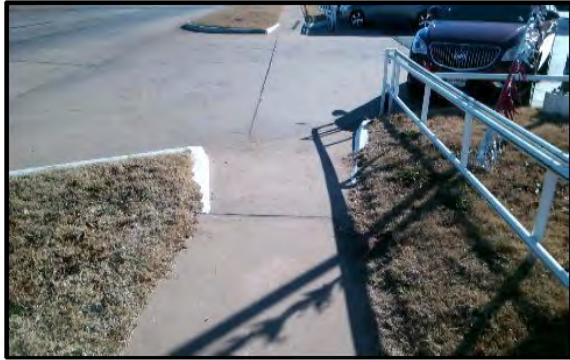
Project Location



Field Observations

Intersection Issues	Crosswalk				Possible Solutions
	N	E	S	W	
Path of travel pavement condition					All driveway path of travel issues and possible solutions provided in driveway shapefile (TRPEDDRV)
Path of travel running slope is greater than 5%					
Path of travel cross slope is greater than 2% for stop control approaches					
Path of travel cross slope is greater than 5% for free-flow approaches					
Crosswalk width is less than 6'					
Crosswalk striping condition					

Curb Ramp Issues	Curb Ramp ID ('z' or 'l' in ramp label indicates no existing ramp)		Possible Solutions	
	1A	4A		
Curb ramp does not exist and is needed			Remove and replace curb ramp	
Curb ramp does not land in crosswalk				
No 4' x 4' clear space at base of curb ramp				
Curbed side is not 90° or has traversable adjacent surface				
Flare cross slope is greater than 10%				
Curb ramp running slope is greater than 8.3%				
Blended transition running slope is greater than 5%				
Cut-thru ramp running slope is greater than 5%				
Curb ramp cross slope is greater than 2%	X			
Cut-thru ramp cross slope is greater than 2%				
Curb ramp width is less than 48"		X	For intersection, commercial driveway, and park ramps, install color truncated domes	
Cut-thru ramp width is less than 60"				
Permanent obstruction (>0.25') in curb ramp/landing/flares				
Temporary obstruction (>0.25') in curb ramp/landing/flares				
No textured surface at base of curb ramp	X	X		
No color contrast at base of curb ramp	X	X		
Landing area does not exist and is needed				Remove and replace landing area Fix curb ramp transition
Landing area is less than 5' x 5' or slopes greater than 2%	X	X		
Curb ramp transition onto roadway is greater than 0.25'		X		
Counter slope of the gutter or street at the foot of the curb ramp is greater than 5%				
Ponding occurs at base of curb ramp				



Ramp 1A



Ramp 4A

Opinion of Probable Construction Cost Disclaimer:

The Engineer has no control over the cost of labor, materials, equipment, or over the Contractor's methods of determining prices or over competitive bidding or market conditions. Opinions of probable costs provided herein are based on the information known to Engineer at this time and represent only the Engineer's judgment as a design professional familiar with the construction industry. The Engineer cannot and does not guarantee that proposals, bids, or actual construction costs will not vary from its opinions of probable costs.

Project Location Map Sources:

Esri, DeLorme, NAVTEQ, USGS, Intermap, iPC, NRCAN, Esri Japan, METI, Esri China (Hong Kong), Esri (Thailand), TomTom, 2013, DigitalGlobe, GeoEye, i-cubed, USDA, AEX, Getmapping, Aerogrip, IGN, IGP, swisstopo, and the GIS User Community

Kimley-Horn and Associates, Inc.

Priority: 5

Project Description for Unsignalized Intersection

Client: City of Norman
 Program: ADA Self-Evaluation and Transition Plan
 KHA No.: 061298800

Date: 4/30/18
 Prepared By: CMP
 Checked By: EPE

Corridor: 24th Ave SW
 Project Name: Intersection of 24th Ave SW and driveway (Lat. 35.2047; Long. -97.4767)
 City: Norman

GPS ID: 90121

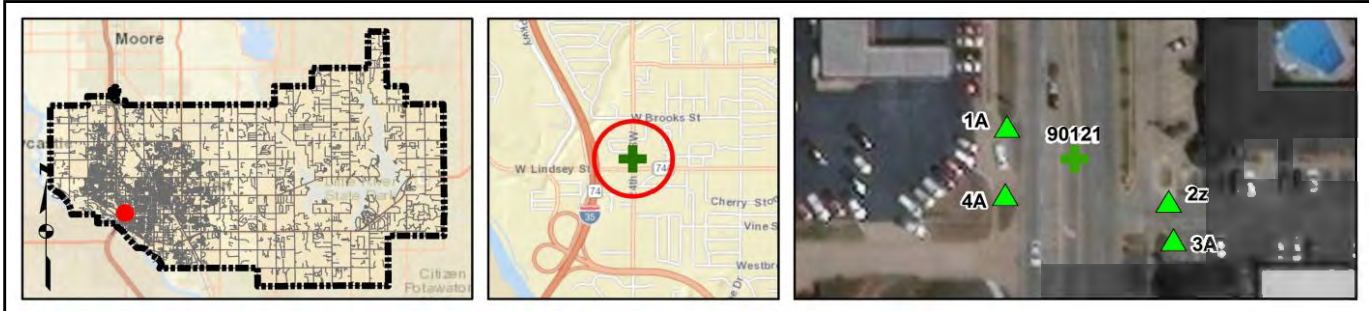
Item No.	Item Description	Quantity	Unit	Unit Price	Item Cost
ODOT 202(A)-0183	Unclassified Excavation	0	CY	\$ 5.50	\$ -
ODOT 609(A)-0300	Concrete Curb (6" Barrier-Integral)	0	LF	\$ 7.00	\$ -
ODOT 610(A)-0602	4" Concrete Sidewalk	28	SY	\$ 50.00	\$ 1,400.00
ODOT 610(I)-4610	Tactile Warning Device - New	30	SF	\$ 25.00	\$ 750.00
ODOT 610(I)-4615	Tactile Warning Device - Retrofit	10	SF	\$ 60.00	\$ 600.00
ODOT 619(B)-4792	Removal of Sidewalk	21	SY	\$ 12.00	\$ 252.00
ODOT 857(F)-8006	Pavement Marking Removal (Traffic Stripe)	0	LF	\$ 0.25	\$ -
---	Crosswalk Pavement Markings	0	LF	\$ 6.00	\$ -
---	Repave Roadway	0	LS	\$ 5,000.00	\$ -
---	Fix Ponding	0	LS	\$ 2,000.00	\$ -
---	Fix Curb Ramp Transition	2	LS	\$ 2,000.00	\$ 4,000.00
---	Median Nose Modification	0	LS	\$ 5,000.00	\$ -
---	Remove Temporary Obstruction	0	LS	\$ 500.00	\$ -
---	Fix Curb Ramp Counter Slope	0	LS	\$ 2,000.00	\$ -

Basis for Cost Projection

- No Design Completed
- Preliminary Design
- Final Design

Subtotal:	\$	7,002.00
Engineering: (% +/-)	15%	\$ 1,284.86
Contingency: (% +/-)	20%	\$ 1,713.14
Estimated Project Cost:	\$	10,000.00

Project Location



Field Observations

Intersection Issues	Crosswalk				Possible Solutions
	N	E	S	W	
Path of travel pavement condition					All driveway path of travel issues and possible solutions provided in driveway shapefile (TRPEDDRV)
Path of travel running slope is greater than 5%					
Path of travel cross slope is greater than 2% for stop control approaches					
Path of travel cross slope is greater than 5% for free-flow approaches					
Crosswalk width is less than 6'					
Crosswalk striping condition					

Curb Ramp Issues	Curb Ramp ID ('z' or 'l' in ramp label indicates no existing ramp)				Possible Solutions
	1A	2z	3A	4A	
Curb ramp does not exist and is needed		X			Install curb ramp; if median improvement, see shapefile
Curb ramp does not land in crosswalk					
No 4' x 4' clear space at base of curb ramp					Remove and replace curb ramp
Curbed side is not 90° or has traversable adjacent surface					
Flare cross slope is greater than 10%					
Curb ramp running slope is greater than 8.3%					
Blended transition running slope is greater than 5%					
Cut-thru ramp running slope is greater than 5%					
Curb ramp cross slope is greater than 2%			X	X	
Cut-thru ramp cross slope is greater than 2%					
Curb ramp width is less than 48"					
Cut-thru ramp width is less than 60"					
Permanent obstruction (>0.25') in curb ramp/landing/flares			X		For intersection, commercial driveway, and park ramps, install color truncated domes
Temporary obstruction (>0.25') in curb ramp/landing/flares					
No textured surface at base of curb ramp	X		X	X	
No color contrast at base of curb ramp	X		X	X	
Landing area does not exist and is needed					
Landing area is less than 5' x 5' or slopes greater than 2%	X			X	
Curb ramp transition onto roadway is greater than 0.25'			X	X	
Counter slope of the gutter or street at the foot of the curb ramp is greater than 5%					
Ponding occurs at base of curb ramp					
					Fix curb ramp transition



Ramp 1A



Corner 2 No Ramp (2z)



Ramp 3A



Ramp 4A

Opinion of Probable Construction Cost Disclaimer:

The Engineer has no control over the cost of labor, materials, equipment, or over the Contractor's methods of determining prices or over competitive bidding or market conditions. Opinions of probable costs provided herein are based on the information known to Engineer at this time and represent only the Engineer's judgment as a design professional familiar with the construction industry. The Engineer cannot and does not guarantee that proposals, bids, or actual construction costs will not vary from its opinions of probable costs.

Project Location Map Sources:

Esri, DeLorme, NAVTEQ, USGS, Intermap, iPC, NRCAN, Esri Japan, METI, Esri China (Hong Kong), Esri (Thailand), TomTom, 2013, DigitalGlobe, GeoEye, i-cubed, USDA, AEX, Getmapping, Aerogrip, IGN, IGP, swisstopo, and the GIS User Community

Client: City of Norman
 Program: ADA Self-Evaluation and Transition Plan
 KHA No.: 061298800

Date: 4/30/18
 Prepared By: CMP
 Checked By: EPE

Corridor: 24th Ave SW
 Project Name: Intersection of 24th Ave SW and driveway (Lat. 35.2045; Long. -97.4767)
 City: Norman

GPS ID: 90122

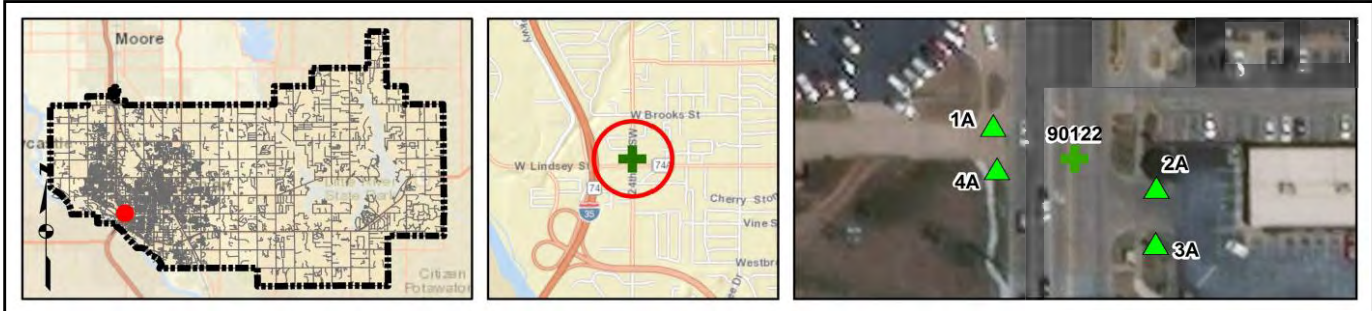
Item No.	Item Description	Quantity	Unit	Unit Price	Item Cost
ODOT 202(A)-0183	Unclassified Excavation	0	CY	\$ 5.50	\$ -
ODOT 609(A)-0300	Concrete Curb (6" Barrier-Integral)	0	LF	\$ 7.00	\$ -
ODOT 610(A)-0602	4" Concrete Sidewalk	22	SY	\$ 50.00	\$ 1,100.00
ODOT 610(I)-4610	Tactile Warning Device - New	30	SF	\$ 25.00	\$ 750.00
ODOT 610(I)-4615	Tactile Warning Device - Retrofit	10	SF	\$ 60.00	\$ 600.00
ODOT 619(B)-4792	Removal of Sidewalk	31	SY	\$ 12.00	\$ 372.00
ODOT 857(F)-8006	Pavement Marking Removal (Traffic Stripe)	0	LF	\$ 0.25	\$ -
---	Crosswalk Pavement Markings	0	LF	\$ 6.00	\$ -
---	Repave Roadway	0	LS	\$ 5,000.00	\$ -
---	Fix Ponding	0	LS	\$ 2,000.00	\$ -
---	Fix Curb Ramp Transition	3	LS	\$ 2,000.00	\$ 6,000.00
---	Median Nose Modification	0	LS	\$ 5,000.00	\$ -
---	Remove Temporary Obstruction	0	LS	\$ 500.00	\$ -
---	Fix Curb Ramp Counter Slope	0	LS	\$ 2,000.00	\$ -

Basis for Cost Projection

- No Design Completed
- Preliminary Design
- Final Design

Subtotal:	\$	8,822.00
Engineering: (% +/-)	15%	\$ 1,362.00
Contingency: (% +/-)	20%	\$ 1,816.00
Estimated Project Cost:	\$	12,000.00

Project Location



Field Observations

Intersection Issues	Crosswalk				Possible Solutions
	N	E	S	W	
Path of travel pavement condition					All driveway path of travel issues and possible solutions provided in driveway shapefile (TRPEDDRV)
Path of travel running slope is greater than 5%					
Path of travel cross slope is greater than 2% for stop control approaches					
Path of travel cross slope is greater than 5% for free-flow approaches					
Crosswalk width is less than 6'					
Crosswalk striping condition					

Curb Ramp Issues	Curb Ramp ID ('z' or 'l' in ramp label indicates no existing ramp)				Possible Solutions	
	1A	2A	3A	4A		
Curb ramp does not exist and is needed					Remove and replace curb ramp	
Curb ramp does not land in crosswalk						
No 4' x 4' clear space at base of curb ramp						
Curbed side is not 90° or has traversable adjacent surface		X				
Flare cross slope is greater than 10%			X			
Curb ramp running slope is greater than 8.3%		X	X			
Blended transition running slope is greater than 5%						
Cut-thru ramp running slope is greater than 5%						
Curb ramp cross slope is greater than 2%	X		X			
Cut-thru ramp cross slope is greater than 2%						
Curb ramp width is less than 48"					For intersection, commercial driveway, and park ramps, install color truncated domes	
Cut-thru ramp width is less than 60"						
Permanent obstruction (>0.25') in curb ramp/landing/flares						
Temporary obstruction (>0.25') in curb ramp/landing/flares						
No textured surface at base of curb ramp	X	X	X	X		
No color contrast at base of curb ramp	X	X	X	X		
Landing area does not exist and is needed						Remove and replace landing area
Landing area is less than 5' x 5' or slopes greater than 2%	X	X	X			
Curb ramp transition onto roadway is greater than 0.25'	X	X	X			
Counter slope of the gutter or street at the foot of the curb ramp is greater than 5%						Fix curb ramp transition
Ponding occurs at base of curb ramp						



Ramp 1A



Ramp 2A



Ramp 3A



Ramp 4A

Opinion of Probable Construction Cost Disclaimer:

The Engineer has no control over the cost of labor, materials, equipment, or over the Contractor's methods of determining prices or over competitive bidding or market conditions. Opinions of probable costs provided herein are based on the information known to Engineer at this time and represent only the Engineer's judgment as a design professional familiar with the construction industry. The Engineer cannot and does not guarantee that proposals, bids, or actual construction costs will not vary from its opinions of probable costs.

Project Location Map Sources:

Esri, DeLorme, NAVTEQ, USGS, Intermap, iPC, NRCAN, Esri Japan, METI, Esri China (Hong Kong), Esri (Thailand), TomTom, 2013, DigitalGlobe, GeoEye, i-cubed, USDA, AEX, Getmapping, Aerogrip, IGN, IGP, swisstopo, and the GIS User Community

Client: City of Norman
 Program: ADA Self-Evaluation and Transition Plan
 KHA No.: 061298800

Date: 4/30/18
 Prepared By: CMP
 Checked By: EPE

Corridor : 24th Ave SW
 Project Name: Intersection of 24th Ave SW and driveway (Lat. 35.2058; Long. -97.4767)
 City: Norman

GPS ID: 90123

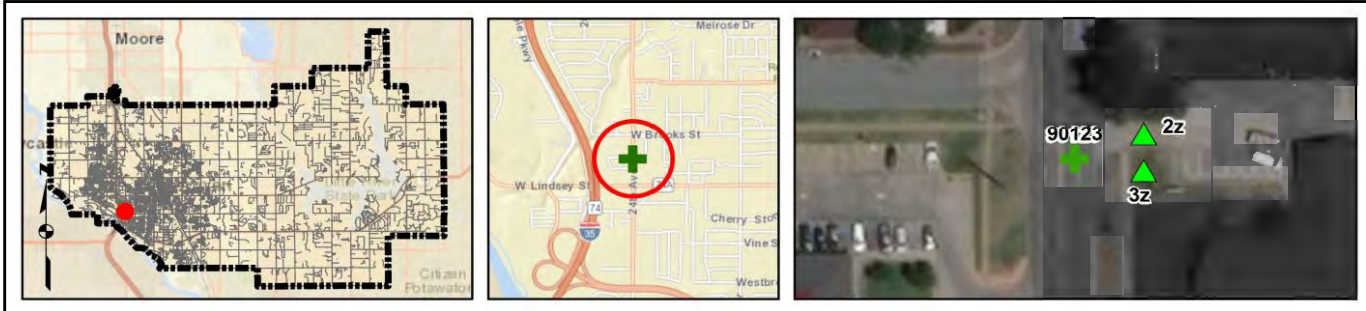
Item No.	Item Description	Quantity	Unit	Unit Price	Item Cost
ODOT 202(A)-0183	Unclassified Excavation	0	CY	\$ 5.50	\$ -
ODOT 609(A)-0300	Concrete Curb (6" Barrier-Integral)	0	LF	\$ 7.00	\$ -
ODOT 610(A)-0602	4" Concrete Sidewalk	0	SY	\$ 50.00	\$ -
ODOT 610(I)-4610	Tactile Warning Device - New	0	SF	\$ 25.00	\$ -
ODOT 610(I)-4615	Tactile Warning Device - Retrofit	20	SF	\$ 60.00	\$ 1,200.00
ODOT 619(B)-4792	Removal of Sidewalk	0	SY	\$ 12.00	\$ -
ODOT 857(F)-8006	Pavement Marking Removal (Traffic Stripe)	0	LF	\$ 0.25	\$ -
---	Crosswalk Pavement Markings	0	LF	\$ 6.00	\$ -
---	Repave Roadway	0	LS	\$ 5,000.00	\$ -
---	Fix Ponding	0	LS	\$ 2,000.00	\$ -
---	Fix Curb Ramp Transition	0	LS	\$ 2,000.00	\$ -
---	Median Nose Modification	0	LS	\$ 5,000.00	\$ -
---	Remove Temporary Obstruction	0	LS	\$ 500.00	\$ -
---	Fix Curb Ramp Counter Slope	0	LS	\$ 2,000.00	\$ -

Basis for Cost Projection

- No Design Completed
- Preliminary Design
- Final Design

Subtotal:	\$	1,200.00
Engineering: (% +/-)	15%	\$ 342.86
Contingency: (% +/-)	20%	\$ 457.14
Estimated Project Cost:	\$	2,000.00

Project Location



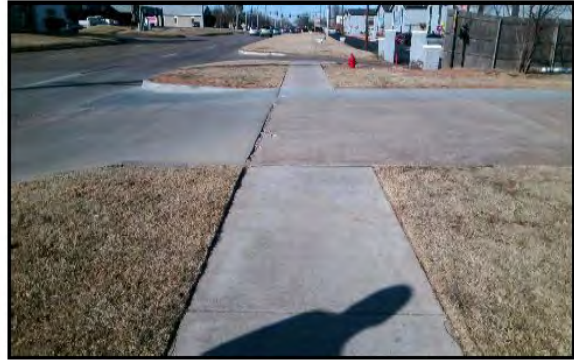
Field Observations

Intersection Issues	Crosswalk				Possible Solutions
	N	E	S	W	
Path of travel pavement condition					All driveway path of travel issues and possible solutions provided in driveway shapefile (TRPEDDRV)
Path of travel running slope is greater than 5%					
Path of travel cross slope is greater than 2% for stop control approaches					
Path of travel cross slope is greater than 5% for free-flow approaches					
Crosswalk width is less than 6'					
Crosswalk striping condition					

Curb Ramp Issues	Curb Ramp ID ('z' or 'l' in ramp label indicates no existing ramp)		Possible Solutions
	2z	3z	
Curb ramp does not exist and is needed			For intersection, commercial driveway, and park ramps, install color truncated domes
Curb ramp does not land in crosswalk			
No 4' x 4' clear space at base of curb ramp			
Curbed side is not 90° or has traversable adjacent surface			
Flare cross slope is greater than 10%			
Curb ramp running slope is greater than 8.3%			
Blended transition running slope is greater than 5%			
Cut-thru ramp running slope is greater than 5%			
Curb ramp cross slope is greater than 2%			
Cut-thru ramp cross slope is greater than 2%			
Curb ramp width is less than 48"			
Cut-thru ramp width is less than 60"			
Permanent obstruction (>0.25') in curb ramp/landing/flares			
Temporary obstruction (>0.25') in curb ramp/landing/flares			
No textured surface at base of curb ramp	X	X	
No color contrast at base of curb ramp	X	X	
Landing area does not exist and is needed			
Landing area is less than 5' x 5' or slopes greater than 2%			
Curb ramp transition onto roadway is greater than 0.25'			
Counter slope of the gutter or street at the foot of the curb ramp is greater than 5%			
Ponding occurs at base of curb ramp			



Corner 2 No Ramp (2z)



Corner 3 No Ramp (3z)

Opinion of Probable Construction Cost Disclaimer:

The Engineer has no control over the cost of labor, materials, equipment, or over the Contractor's methods of determining prices or over competitive bidding or market conditions. Opinions of probable costs provided herein are based on the information known to Engineer at this time and represent only the Engineer's judgment as a design professional familiar with the construction industry. The Engineer cannot and does not guarantee that proposals, bids, or actual construction costs will not vary from its opinions of probable costs.

Project Location Map Sources:

Esri, DeLorme, NAVTEQ, USGS, Intermap, iPC, NRCAN, Esri Japan, METI, Esri China (Hong Kong), Esri (Thailand), TomTom, 2013, DigitalGlobe, GeoEye, i-cubed, USDA, AEX, Getmapping, Aerogrip, IGN, IGP, swisstopo, and the GIS User Community

Client: City of Norman
 Program: ADA Self-Evaluation and Transition Plan
 KHA No.: 061298800

Date: 4/30/18
 Prepared By: CMP
 Checked By: EPE

Corridor : 24th Ave SW
 Project Name: Intersection of 24th Ave SW and driveway (Lat. 35.2086; Long. -97.4767)
 City: Norman

GPS ID: 90124

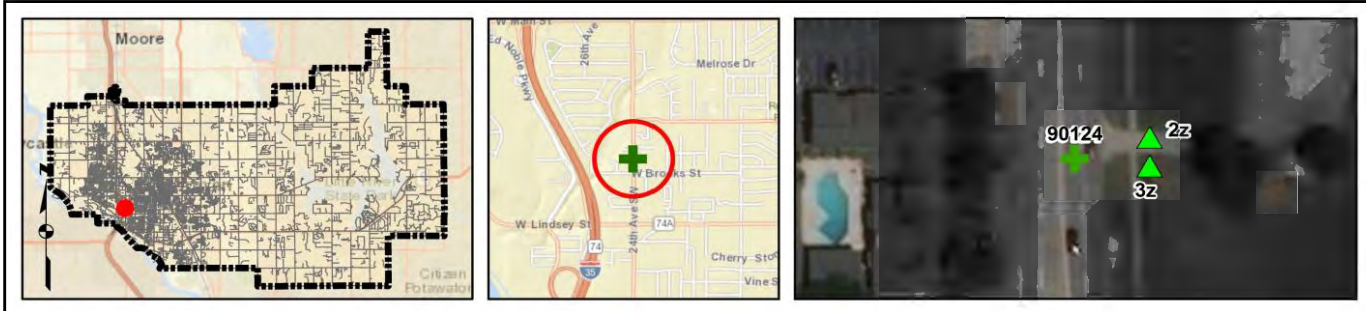
Item No.	Item Description	Quantity	Unit	Unit Price	Item Cost
ODOT 202(A)-0183	Unclassified Excavation	0	CY	\$ 5.50	\$ -
ODOT 609(A)-0300	Concrete Curb (6" Barrier-Integral)	0	LF	\$ 7.00	\$ -
ODOT 610(A)-0602	4" Concrete Sidewalk	0	SY	\$ 50.00	\$ -
ODOT 610(I)-4610	Tactile Warning Device - New	0	SF	\$ 25.00	\$ -
ODOT 610(I)-4615	Tactile Warning Device - Retrofit	20	SF	\$ 60.00	\$ 1,200.00
ODOT 619(B)-4792	Removal of Sidewalk	0	SY	\$ 12.00	\$ -
ODOT 857(F)-8006	Pavement Marking Removal (Traffic Stripe)	0	LF	\$ 0.25	\$ -
---	Crosswalk Pavement Markings	0	LF	\$ 6.00	\$ -
---	Repave Roadway	0	LS	\$ 5,000.00	\$ -
---	Fix Ponding	0	LS	\$ 2,000.00	\$ -
---	Fix Curb Ramp Transition	0	LS	\$ 2,000.00	\$ -
---	Median Nose Modification	0	LS	\$ 5,000.00	\$ -
---	Remove Temporary Obstruction	0	LS	\$ 500.00	\$ -
---	Fix Curb Ramp Counter Slope	0	LS	\$ 2,000.00	\$ -

Basis for Cost Projection

- No Design Completed
- Preliminary Design
- Final Design

Subtotal:	\$	1,200.00
Engineering: (% +/-)	15%	\$ 342.86
Contingency: (% +/-)	20%	\$ 457.14
Estimated Project Cost:	\$	2,000.00

Project Location



Field Observations

Intersection Issues	Crosswalk				Possible Solutions
	N	E	S	W	
Path of travel pavement condition					All driveway path of travel issues and possible solutions provided in driveway shapefile (TRPEDDRV)
Path of travel running slope is greater than 5%					
Path of travel cross slope is greater than 2% for stop control approaches					
Path of travel cross slope is greater than 5% for free-flow approaches					
Crosswalk width is less than 6'					
Crosswalk striping condition					

Curb Ramp Issues	Curb Ramp ID ('z' or 'l' in ramp label indicates no existing ramp)		Possible Solutions
	2z	3z	
Curb ramp does not exist and is needed			For intersection, commercial driveway, and park ramps, install color truncated domes
Curb ramp does not land in crosswalk			
No 4' x 4' clear space at base of curb ramp			
Curbed side is not 90° or has traversable adjacent surface			
Flare cross slope is greater than 10%			
Curb ramp running slope is greater than 8.3%			
Blended transition running slope is greater than 5%			
Cut-thru ramp running slope is greater than 5%			
Curb ramp cross slope is greater than 2%			
Cut-thru ramp cross slope is greater than 2%			
Curb ramp width is less than 48"			
Cut-thru ramp width is less than 60"			
Permanent obstruction (>0.25') in curb ramp/landing/flares			
Temporary obstruction (>0.25') in curb ramp/landing/flares			
No textured surface at base of curb ramp	X	X	
No color contrast at base of curb ramp	X	X	
Landing area does not exist and is needed			
Landing area is less than 5' x 5' or slopes greater than 2%			
Curb ramp transition onto roadway is greater than 0.25			
Counter slope of the gutter or street at the foot of the curb ramp is greater than 5%			
Ponding occurs at base of curb ramp			



Corner 2 No Ramp (2z)



Corner 3 No Ramp (3z)

Opinion of Probable Construction Cost Disclaimer:

The Engineer has no control over the cost of labor, materials, equipment, or over the Contractor's methods of determining prices or over competitive bidding or market conditions. Opinions of probable costs provided herein are based on the information known to Engineer at this time and represent only the Engineer's judgment as a design professional familiar with the construction industry. The Engineer cannot and does not guarantee that proposals, bids, or actual construction costs will not vary from its opinions of probable costs.

Project Location Map Sources:

Esri, DeLorme, NAVTEQ, USGS, Intermap, iPC, NRCAN, Esri Japan, METI, Esri China (Hong Kong), Esri (Thailand), TomTom, 2013, DigitalGlobe, GeoEye, i-cubed, USDA, AEX, Getmapping, Aerogrip, IGN, IGP, swisstopo, and the GIS User Community

Client: City of Norman
 Program: ADA Self-Evaluation and Transition Plan
 KHA No.: 061298800

Date: 4/30/18
 Prepared By: CMP
 Checked By: EPE

Corridor: 24th Ave SW
 Project Name: Intersection of 24th Ave SW and driveway (Lat. 35.2089; Long. -97.4766)
 City: Norman

GPS ID: 90125

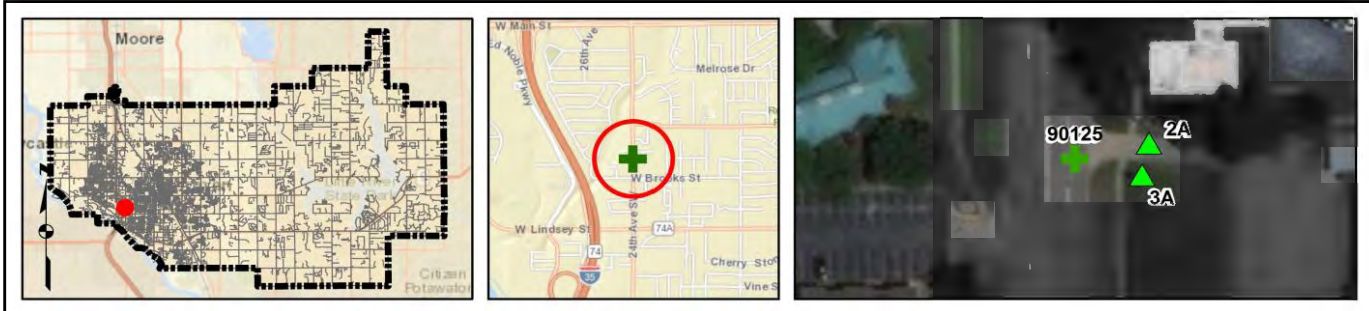
Item No.	Item Description	Quantity	Unit	Unit Price	Item Cost
ODOT 202(A)-0183	Unclassified Excavation	0	CY	\$ 5.50	\$ -
ODOT 609(A)-0300	Concrete Curb (6" Barrier-Integral)	0	LF	\$ 7.00	\$ -
ODOT 610(A)-0602	4" Concrete Sidewalk	15	SY	\$ 50.00	\$ 750.00
ODOT 610(I)-4610	Tactile Warning Device - New	20	SF	\$ 25.00	\$ 500.00
ODOT 610(I)-4615	Tactile Warning Device - Retrofit	0	SF	\$ 60.00	\$ -
ODOT 619(B)-4792	Removal of Sidewalk	21	SY	\$ 12.00	\$ 252.00
ODOT 857(F)-8006	Pavement Marking Removal (Traffic Stripe)	0	LF	\$ 0.25	\$ -
---	Crosswalk Pavement Markings	0	LF	\$ 6.00	\$ -
---	Repave Roadway	0	LS	\$ 5,000.00	\$ -
---	Fix Ponding	0	LS	\$ 2,000.00	\$ -
---	Fix Curb Ramp Transition	1	LS	\$ 2,000.00	\$ 2,000.00
---	Median Nose Modification	0	LS	\$ 5,000.00	\$ -
---	Remove Temporary Obstruction	0	LS	\$ 500.00	\$ -
---	Fix Curb Ramp Counter Slope	0	LS	\$ 2,000.00	\$ -

Basis for Cost Projection

- No Design Completed
- Preliminary Design
- Final Design

Subtotal:	\$	3,502.00
Engineering: (% +/-)	15%	\$ 642.00
Contingency: (% +/-)	20%	\$ 856.00
Estimated Project Cost:	\$	5,000.00

Project Location



Field Observations

Intersection Issues	Crosswalk				Possible Solutions
	N	E	S	W	
Path of travel pavement condition					All driveway path of travel issues and possible solutions provided in driveway shapefile (TRPEDDRV)
Path of travel running slope is greater than 5%					
Path of travel cross slope is greater than 2% for stop control approaches					
Path of travel cross slope is greater than 5% for free-flow approaches					
Crosswalk width is less than 6'					
Crosswalk striping condition					

Curb Ramp Issues	Curb Ramp ID ('2' or '1' in ramp label indicates no existing ramp)		Possible Solutions	
	2A	3A		
Curb ramp does not exist and is needed			Remove and replace curb ramp	
Curb ramp does not land in crosswalk				
No 4' x 4' clear space at base of curb ramp				
Curbed side is not 90° or has traversable adjacent surface				
Flare cross slope is greater than 10%				
Curb ramp running slope is greater than 8.3%				
Blended transition running slope is greater than 5%				
Cut-thru ramp running slope is greater than 5%				
Curb ramp cross slope is greater than 2%	X	X		
Cut-thru ramp cross slope is greater than 2%				
Curb ramp width is less than 48"			For intersection, commercial driveway, and park ramps, install color truncated domes	
Cut-thru ramp width is less than 60"				
Permanent obstruction (>0.25') in curb ramp/landing/flares				
Temporary obstruction (>0.25') in curb ramp/landing/flares				
No textured surface at base of curb ramp	X	X		
No color contrast at base of curb ramp	X	X		
Landing area does not exist and is needed				Remove and replace landing area
Landing area is less than 5' x 5' or slopes greater than 2%	X	X		
Curb ramp transition onto roadway is greater than 0.25'		X		
Counter slope of the gutter or street at the foot of the curb ramp is greater than 5%				Fix curb ramp transition
Ponding occurs at base of curb ramp				



Ramp 2A



Ramp 3A

Opinion of Probable Construction Cost Disclaimer:

The Engineer has no control over the cost of labor, materials, equipment, or over the Contractor's methods of determining prices or over competitive bidding or market conditions. Opinions of probable costs provided herein are based on the information known to Engineer at this time and represent only the Engineer's judgment as a design professional familiar with the construction industry. The Engineer cannot and does not guarantee that proposals, bids, or actual construction costs will not vary from its opinions of probable costs.

Project Location Map Sources:

Esri, DeLorme, NAVTEQ, USGS, Intermap, iPC, NRCAN, Esri Japan, METI, Esri China (Hong Kong), Esri (Thailand), TomTom, 2013, DigitalGlobe, GeoEye, i-cubed, USDA, AEX, Getmapping, Aerogrip, IGN, IGP, swisstopo, and the GIS User Community

Client: City of Norman
 Program: ADA Self-Evaluation and Transition Plan
 KHA No.: 061298800

Date: 4/30/18
 Prepared By: CMP
 Checked By: EPE

Corridor: E Lindsey St
 Project Name: Intersection of E Lindsey St and driveway (Lat. 35.2038; Long. -97.4214)
 City: Norman

GPS ID: 93223

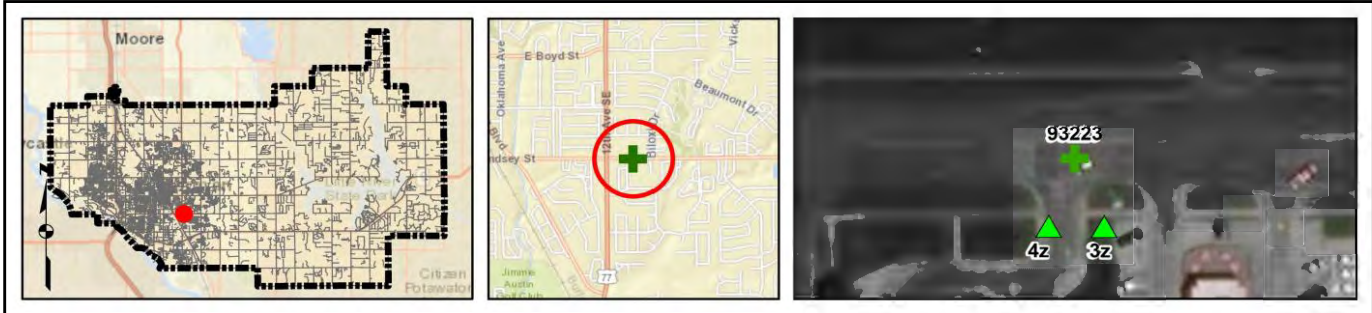
Item No.	Item Description	Quantity	Unit	Unit Price	Item Cost
ODOT 202(A)-0183	Unclassified Excavation	0	CY	\$ 5.50	\$ -
ODOT 609(A)-0300	Concrete Curb (6" Barrier-Integral)	0	LF	\$ 7.00	\$ -
ODOT 610(A)-0602	4" Concrete Sidewalk	0	SY	\$ 50.00	\$ -
ODOT 610(I)-4610	Tactile Warning Device - New	0	SF	\$ 25.00	\$ -
ODOT 610(I)-4615	Tactile Warning Device - Retrofit	20	SF	\$ 60.00	\$ 1,200.00
ODOT 619(B)-4792	Removal of Sidewalk	0	SY	\$ 12.00	\$ -
ODOT 857(F)-8006	Pavement Marking Removal (Traffic Stripe)	0	LF	\$ 0.25	\$ -
---	Crosswalk Pavement Markings	0	LF	\$ 6.00	\$ -
---	Repave Roadway	0	LS	\$ 5,000.00	\$ -
---	Fix Ponding	0	LS	\$ 2,000.00	\$ -
---	Fix Curb Ramp Transition	0	LS	\$ 2,000.00	\$ -
---	Median Nose Modification	0	LS	\$ 5,000.00	\$ -
---	Remove Temporary Obstruction	0	LS	\$ 500.00	\$ -
---	Fix Curb Ramp Counter Slope	0	LS	\$ 2,000.00	\$ -

Basis for Cost Projection

- No Design Completed
- Preliminary Design
- Final Design

Subtotal:	\$	1,200.00
Engineering: (% +/-)	15%	\$ 342.86
Contingency: (% +/-)	20%	\$ 457.14
Estimated Project Cost:	\$	2,000.00

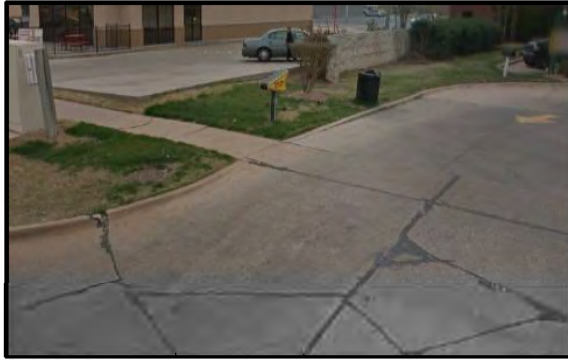
Project Location



Field Observations

Intersection Issues	Crosswalk				Possible Solutions
	N	E	S	W	
Path of travel pavement condition					All driveway path of travel issues and possible solutions provided in driveway shapefile (TRPEDDRV)
Path of travel running slope is greater than 5%					
Path of travel cross slope is greater than 2% for stop control approaches					
Path of travel cross slope is greater than 5% for free-flow approaches					
Crosswalk width is less than 6'					
Crosswalk striping condition					

Curb Ramp Issues	Curb Ramp ID ('z' or 'l' in ramp label indicates no existing ramp)		Possible Solutions
	3z	4z	
Curb ramp does not exist and is needed			For intersection, commercial driveway, and park ramps, install color truncated domes
Curb ramp does not land in crosswalk			
No 4' x 4' clear space at base of curb ramp			
Curbed side is not 90° or has traversable adjacent surface			
Flare cross slope is greater than 10%			
Curb ramp running slope is greater than 8.3%			
Blended transition running slope is greater than 5%			
Cut-thru ramp running slope is greater than 5%			
Curb ramp cross slope is greater than 2%			
Cut-thru ramp cross slope is greater than 2%			
Curb ramp width is less than 48"			
Cut-thru ramp width is less than 60"			
Permanent obstruction (>0.25') in curb ramp/landing/flares			
Temporary obstruction (>0.25') in curb ramp/landing/flares			
No textured surface at base of curb ramp	X	X	
No color contrast at base of curb ramp	X	X	
Landing area does not exist and is needed			
Landing area is less than 5' x 5' or slopes greater than 2%			
Curb ramp transition onto roadway is greater than 0.25'			
Counter slope of the gutter or street at the foot of the curb ramp is greater than 5%			
Ponding occurs at base of curb ramp			



Corner 3 No Ramp (3z)



Corner 4 No Ramp (4z)

Opinion of Probable Construction Cost Disclaimer:

The Engineer has no control over the cost of labor, materials, equipment, or over the Contractor's methods of determining prices or over competitive bidding or market conditions. Opinions of probable costs provided herein are based on the information known to Engineer at this time and represent only the Engineer's judgment as a design professional familiar with the construction industry. The Engineer cannot and does not guarantee that proposals, bids, or actual construction costs will not vary from its opinions of probable costs.

Project Location Map Sources:

Esri, DeLorme, NAVTEQ, USGS, Intermap, iPC, NRCAN, Esri Japan, METI, Esri China (Hong Kong), Esri (Thailand), TomTom, 2013, DigitalGlobe, GeoEye, i-cubed, USDA, AEX, Getmapping, Aerogrip, IGN, IGP, swisstopo, and the GIS User Community

Client: City of Norman
 Program: ADA Self-Evaluation and Transition Plan
 KHA No.: 061298800

Date: 4/30/18
 Prepared By: CMP
 Checked By: EPE

Corridor: E Lindsey St
 Project Name: Intersection of E Lindsey St and driveway (Lat. 35.2038; Long. -97.4212)
 City: Norman

GPS ID: 93224

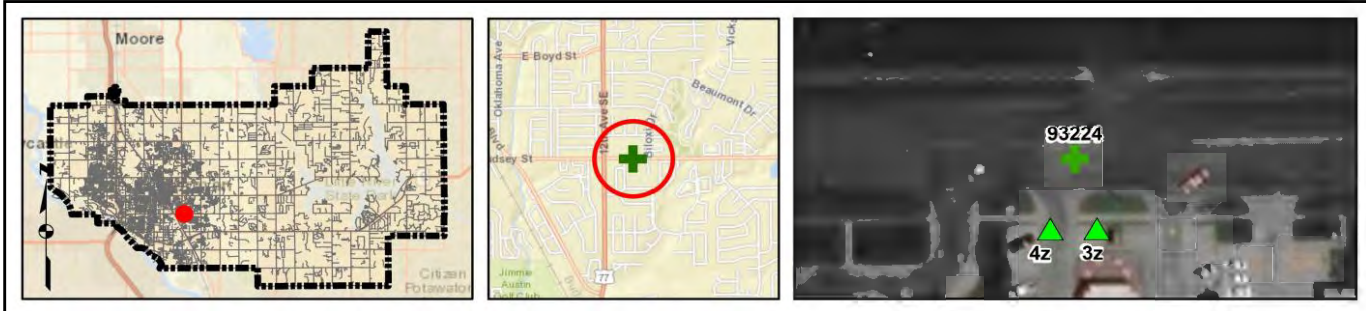
Item No.	Item Description	Quantity	Unit	Unit Price	Item Cost
ODOT 202(A)-0183	Unclassified Excavation	0	CY	\$ 5.50	\$ -
ODOT 609(A)-0300	Concrete Curb (6" Barrier-Integral)	0	LF	\$ 7.00	\$ -
ODOT 610(A)-0602	4" Concrete Sidewalk	0	SY	\$ 50.00	\$ -
ODOT 610(I)-4610	Tactile Warning Device - New	0	SF	\$ 25.00	\$ -
ODOT 610(I)-4615	Tactile Warning Device - Retrofit	20	SF	\$ 60.00	\$ 1,200.00
ODOT 619(B)-4792	Removal of Sidewalk	0	SY	\$ 12.00	\$ -
ODOT 857(F)-8006	Pavement Marking Removal (Traffic Stripe)	0	LF	\$ 0.25	\$ -
---	Crosswalk Pavement Markings	0	LF	\$ 6.00	\$ -
---	Repave Roadway	0	LS	\$ 5,000.00	\$ -
---	Fix Ponding	0	LS	\$ 2,000.00	\$ -
---	Fix Curb Ramp Transition	0	LS	\$ 2,000.00	\$ -
---	Median Nose Modification	0	LS	\$ 5,000.00	\$ -
---	Remove Temporary Obstruction	0	LS	\$ 500.00	\$ -
---	Fix Curb Ramp Counter Slope	0	LS	\$ 2,000.00	\$ -

Basis for Cost Projection

- No Design Completed
- Preliminary Design
- Final Design

Subtotal:	\$	1,200.00
Engineering: (% +/-)	15%	\$ 342.86
Contingency: (% +/-)	20%	\$ 457.14
Estimated Project Cost:	\$	2,000.00

Project Location



Field Observations

Intersection Issues	Crosswalk				Possible Solutions
	N	E	S	W	
Path of travel pavement condition					All driveway path of travel issues and possible solutions provided in driveway shapefile (TRPEDDRV)
Path of travel running slope is greater than 5%					
Path of travel cross slope is greater than 2% for stop control approaches					
Path of travel cross slope is greater than 5% for free-flow approaches					
Crosswalk width is less than 6'					
Crosswalk striping condition					

Curb Ramp Issues	Curb Ramp ID ('z' or 'l' in ramp label indicates no existing ramp)		Possible Solutions
	3z	4z	
Curb ramp does not exist and is needed			For intersection, commercial driveway, and park ramps, install color truncated domes
Curb ramp does not land in crosswalk			
No 4' x 4' clear space at base of curb ramp			
Curbed side is not 90° or has traversable adjacent surface			
Flare cross slope is greater than 10%			
Curb ramp running slope is greater than 8.3%			
Blended transition running slope is greater than 5%			
Cut-thru ramp running slope is greater than 5%			
Curb ramp cross slope is greater than 2%			
Cut-thru ramp cross slope is greater than 2%			
Curb ramp width is less than 48"			
Cut-thru ramp width is less than 60"			
Permanent obstruction (>0.25') in curb ramp/landing/flares			
Temporary obstruction (>0.25') in curb ramp/landing/flares			
No textured surface at base of curb ramp	X	X	
No color contrast at base of curb ramp	X	X	
Landing area does not exist and is needed			
Landing area is less than 5' x 5' or slopes greater than 2%			
Curb ramp transition onto roadway is greater than 0.25'			
Counter slope of the gutter or street at the foot of the curb ramp is greater than 5%			
Ponding occurs at base of curb ramp			



Corner 3 No Ramp (3z)



Corner 4 No Ramp (4z)

Opinion of Probable Construction Cost Disclaimer:

The Engineer has no control over the cost of labor, materials, equipment, or over the Contractor's methods of determining prices or over competitive bidding or market conditions. Opinions of probable costs provided herein are based on the information known to Engineer at this time and represent only the Engineer's judgment as a design professional familiar with the construction industry. The Engineer cannot and does not guarantee that proposals, bids, or actual construction costs will not vary from its opinions of probable costs.

Project Location Map Sources:

Esri, DeLorme, NAVTEQ, USGS, Intermap, iPC, NRCAN, Esri Japan, METI, Esri China (Hong Kong), Esri (Thailand), TomTom, 2013, DigitalGlobe, GeoEye, i-cubed, USDA, AEX, Getmapping, Aerogrip, IGN, IGP, swisstopo, and the GIS User Community