

City of Norman
ADA Self-Evaluation and Transition Plan
Signalized Intersection Cost Projection Summary
4/30/2018

GPS ID	Project Name	Cost Projection	Priority
1	Intersection of W Robinson St and 24th Ave NW	\$ 77,000	2
2	Intersection of 24th Ave NW and Boardwalk St	\$ 56,000	2
3	Intersection of 24th Ave NW and Hemphill Dr	\$ 16,000	5
4	Intersection of 24th Ave NW and W Main St	\$ 73,000	5
5	Intersection of 24th Ave SW and W Boyd St	\$ 55,000	2
6	Intersection of 24th Ave SW and Brooks St	\$ 61,000	2
7	Intersection of 24th Ave SW and W Lindsey St	\$ 17,000	5
8	Intersection of W Main St and Hal Muldrow Dr	\$ 48,000	5
9	Intersection of W Main St and N Mercedes Dr	\$ 66,000	5
10	Intersection of W Main St and N Berry Rd	\$ 35,000	2
11	Intersection of N Webster Ave and W Gray St	\$ 37,000	5
12	Intersection of W Boyd St and S Berry Rd	\$ 29,000	2
13	Intersection of W Boyd St and S Flood Ave	\$ 32,000	4
14	Intersection of W Boyd St and Chautauqua Ave	\$ 56,000	2
15	Intersection of E Lindsey St and Biloxi Dr	\$ 46,000	5
16	Intersection of E Lindsey St and Oakhurst Ave	\$ 26,000	5
17	Intersection of E Lindsey St and 24th Ave SE	\$ 36,000	2
18	Intersection of Stubbeman Ave and W Rock Creek Rd	\$ 59,000	2
19	Intersection of 12th Ave NW and W Tecumseh Rd	\$ 42,000	4
20	Intersection of Brookhollow Rd and 36th Ave NW	\$ 28,000	4
	TOTAL	\$ 895,000	

Kimley-Horn and Associates, Inc. Priority: 2
Project Description for Signalized Intersection

Client: City of Norman Date: 4/30/18
Program: ADA Self-Evaluation and Transition Plan Prepared By: CMP
KHA No.: 061298800 Checked By: EPE

Corridor : 24th Ave NW GPS ID: 1
Project Name: Intersection of W Robinson St and 24th Ave NW
City: Norman

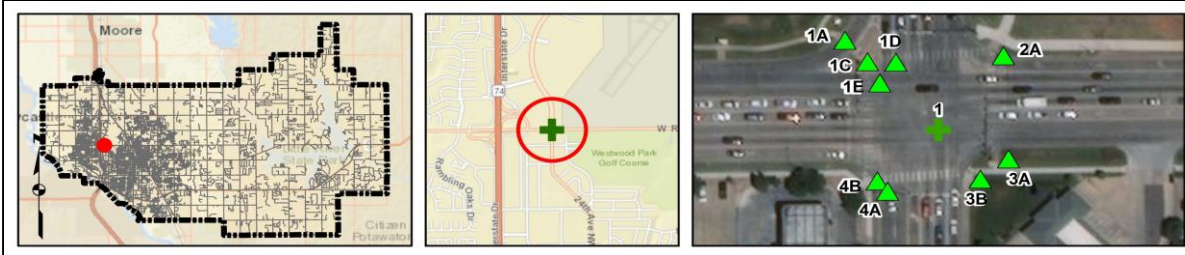
Item No.	Item Description	Quantity	Unit	Unit Price	Item Cost
ODOT 202(A)-0183	Unclassified Excavation	0	CY	\$ 5.50	\$ -
ODOT 609(A)-0300	Concrete Curb (6" Barrier-Integral)	0	LF	\$ 7.00	\$ -
ODOT 610(A)-0602	4" Concrete Sidewalk	82	SY	\$ 50.00	\$ 4,100.00
ODOT 610(U)-4610	Tactile Warning Device - New	80	SF	\$ 25.00	\$ 2,000.00
ODOT 610(U)-4615	Tactile Warning Device - Retrofit	0	SF	\$ 60.00	\$ -
ODOT 619(B)-4792	Removal of Sidewalk	77	SY	\$ 12.00	\$ 924.00
---	Push Button Pole	6	EA	\$ 1,200.00	\$ 7,200.00
ODOT 857(F)-8006	Pavement Marking Removal (Traffic Stripe)	0	LF	\$ 0.25	\$ -
---	Crosswalk Pavement Markings	800	LF	\$ 6.00	\$ 4,800.00
---	Pedestrian Push Button (APS)	0	EA	\$ 1,200.00	\$ -
---	Removal of Pedestrian Push Buttons	0	EA	\$ 50.00	\$ -
---	Relocate Pedestrian Push Button	6	EA	\$ 300.00	\$ 1,800.00
---	12" LED Countdown Ped Signal Module with Housing	0	EA	\$ 650.00	\$ -
---	Pedestrian Push Button Sign	0	EA	\$ 150.00	\$ -
---	Remove Pedestrian Push Button Sign	0	EA	\$ 50.00	\$ -
---	Repave Roadway	4	LS	\$ 5,000.00	\$ 20,000.00
---	Fix Ponding	1	LS	\$ 2,000.00	\$ 2,000.00
---	Fix Curb Ramp Transition	7	LS	\$ 2,000.00	\$ 14,000.00
---	Median Nose Modification	0	LS	\$ 5,000.00	\$ -
---	Remove Temporary Obstruction	0	LS	\$ 500.00	\$ -
---	Fix Curb Ramp Counter Slope	0	LS	\$ 2,000.00	\$ -

Basis for Cost Projection

No Design Completed
 Preliminary Design
 Final Design

Subtotal:	\$	56,824.00
Engineering: (% +/-)	15%	\$ 8,646.86
Contingency: (% +/-)	20%	\$ 11,529.14
Estimated Project Cost:	\$	77,000.00

Project Location



Field Observations

Intersection Issues	Crosswalk				Possible Solutions
	N	E	S	W	
Path of travel pavement condition	Dangerous	Dangerous	Dangerous	Dangerous	Repave roadway and install crosswalk pavement markings
Path of travel running slope is greater than 5%					
Path of travel cross slope is greater than 5%					
Crosswalk width is less than 6'					
Crosswalk striping condition	Good	Worn	Good	Good	Remove and replace crosswalk pavement markings

Curb Ramp Issues	Curb Ramp ID ('z' or 'l' in ramp label indicates no existing ramp)								Possible Solutions	
	1A	1C	1D	1E	2A	3A	3B	4A		4B
Curb ramp does not exist and is needed		X		X						Remove and replace curb ramp
Curb ramp does not land in crosswalk										
No 4' x 4' clear space at base of curb ramp										
Curbed side is not 90° or has traversable adjacent surface	X				X	X				
Flare cross slope is greater than 10%										
Curb ramp running slope is greater than 8.3%	X				X	X				
Blended transition running slope is greater than 5%										
Cut-thru ramp running slope is greater than 5%										
Curb ramp cross slope is greater than 2%	X				X	X				Remove and replace curb ramp
Cut-thru ramp cross slope is greater than 5%										
Curb ramp width is less than 48"										
Cut-thru ramp width is less than 60"										
Permanent obstruction (>0.25") in curb ramp/landing/flares	X		X		X					
Temporary obstruction (>0.25") in curb ramp/landing/flares										
No textured surface at base of curb ramp										
No color contrast at base of curb ramp										
Landing area does not exist and is needed										
Landing area is less than 5' x 5' or slopes greater than 2%	X	X								Remove and replace landing area
Missing or no pedestrian push buttons										
Pedestrian push button is offset more than 5' from the nearest crosswalk edge					X	X	X			Install push button pole and relocate pedestrian push buttons
Pedestrian push button offset more than 10' from curb face						X	X	X	X	
Pedestrian push button is not parallel to crosswalk					X					Relocate pedestrian push buttons
Pedestrian push button height is greater than 48"										
Pedestrian push button diameter is not 2"										
Pedestrian push button sign does not exist										
Pedestrian push button sign is not MUTCD approved										
Clear floor space does not exist and is needed										
Clear floor space for pedestrian push button is less than 30" x 48" or has a slope greater than 2%			X			X			X	Remove and replace clear floor space
Missing or no pedestrian signal heads										
Curb ramp transition onto roadway is greater than 0.25"	X	X		X	X	X	X	X		Fix curb ramp transition
Counter slope of the gutter or street at the foot of the curb ramp is greater than 5%										
Ponding occurs at base of curb ramp				X						Fix ponding



Ramp 1A



Ramp 1C



Ramp 1D



Ramp 1E



Ramp 2A



Ramp 3A



Ramp 3B



Ramp 4A



Ramp 4B

Opinion of Probable Construction Cost Disclaimer:

The Engineer has no control over the cost of labor, materials, equipment, or over the Contractor's methods of determining prices or over competitive bidding or market conditions. Opinions of probable costs provided herein are based on the information known to Engineer at this time and represent only the Engineer's judgment as a design professional familiar with the construction industry. The Engineer cannot and does not guarantee that proposals, bids, or actual construction costs will not vary from its opinions of probable costs.

Project Location Map Sources:

Esri, DeLorme, NAVTEQ, USGS, Intermap, iPC, NRCAN, Esri Japan, METI, Esri China (Hong Kong), Esri (Thailand), TomTom, 2013, DigitalGlobe, GeoEye, i-cubed, USDA, AEX, Getmapping, Aerogrip, IGN, IGP, swisstopo, and the GIS User Community

Client: City of Norman Date: 4/30/18
 Program: ADA Self-Evaluation and Transition Plan Prepared By: CMP
 KHA No.: 061298800 Checked By: EPE

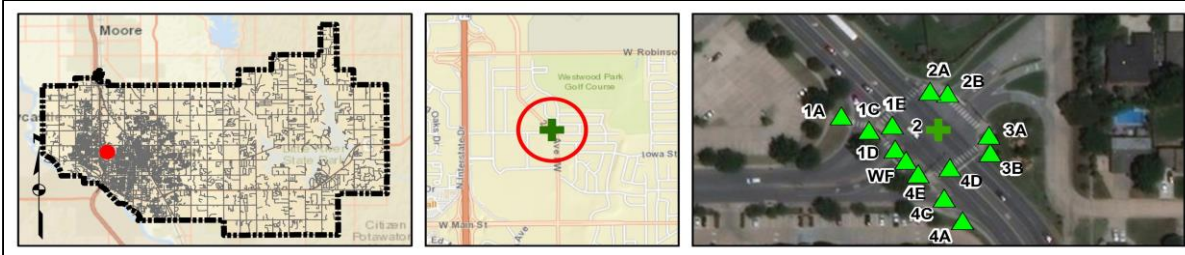
Corridor: 24th Ave NW GPS ID: 2
 Project Name: Intersection of 24th Ave NW and Boardwalk St
 City: Norman

Item No.	Item Description	Quantity	Unit	Unit Price	Item Cost
ODOT 202(A)-0183	Unclassified Excavation	0	CY	\$ 5.50	\$ -
ODOT 609(A)-0300	Concrete Curb (6" Barrier-Integral)	0	LF	\$ 7.00	\$ -
ODOT 610(A)-0602	4" Concrete Sidewalk	108	SY	\$ 50.00	\$ 5,400.00
ODOT 610(U)-4610	Tactile Warning Device - New	100	SF	\$ 25.00	\$ 2,500.00
ODOT 610(U)-4615	Tactile Warning Device - Retrofit	20	SF	\$ 60.00	\$ 1,200.00
ODOT 619(B)-4792	Removal of Sidewalk	126	SY	\$ 12.00	\$ 1,512.00
---	Push Button Pole	2	EA	\$ 1,200.00	\$ 2,400.00
ODOT 857(F)-8006	Pavement Marking Removal (Traffic Stripe)	0	LF	\$ 0.25	\$ -
---	Crosswalk Pavement Markings	0	LF	\$ 6.00	\$ -
---	Pedestrian Push Button (APS)	0	EA	\$ 1,200.00	\$ -
---	Removal of Pedestrian Push Buttons	0	EA	\$ 50.00	\$ -
---	Relocate Pedestrian Push Button	2	EA	\$ 300.00	\$ 600.00
---	12" LED Countdown Ped Signal Module with Housing	0	EA	\$ 650.00	\$ -
---	Pedestrian Push Button Sign	8	EA	\$ 150.00	\$ 1,200.00
---	Remove Pedestrian Push Button Sign	8	EA	\$ 50.00	\$ 400.00
---	Repave Roadway	4	LS	\$ 5,000.00	\$ 20,000.00
---	Fix Ponding	4	LS	\$ 2,000.00	\$ 8,000.00
---	Fix Curb Ramp Transition	6	LS	\$ 2,000.00	\$ 12,000.00
---	Median Nose Modification	0	LS	\$ 5,000.00	\$ -
---	Remove Temporary Obstruction	4	LS	\$ 500.00	\$ 2,000.00
---	Fix Curb Ramp Counter Slope	2	LS	\$ 2,000.00	\$ 4,000.00

Basis for Cost Projection

<input checked="" type="checkbox"/> No Design Completed	Subtotal:	\$ 41,212.00
<input type="checkbox"/> Preliminary Design	Engineering: (% +/-)	15% \$ 6,337.71
<input type="checkbox"/> Final Design	Contingency: (% +/-)	20% \$ 8,450.29
	Estimated Project Cost:	\$ 56,000.00

Project Location



Field Observations

Intersection Issues	Crosswalk				Possible Solutions
	N	E	S	W	
Path of travel pavement condition	Good	Good	Good	Good	
Path of travel running slope is greater than 5%					
Path of travel cross slope is greater than 5%					
Crosswalk width is less than 6'					
Crosswalk striping condition	Good	Good	Good	Good	

Curb Ramp Issues	Curb Ramp ID ('Z' or 'I' in ramp label indicates no existing ramp)										Possible Solutions			
	WF	1A	1C	1D	1E	2A	2B	3A	3B	4A		4C	4D	4E
Curb ramp does not exist and is needed			X	X	X							X	X	Remove and replace curb ramp
Curb ramp does not land in crosswalk			X	X	X							X	X	
No 4' x 4' clear space at base of curb ramp														Remove and replace curb ramp
Curb side is not 90° or has traversable adjacent surface					X	X	X	X	X	X			X	
Flare cross slope is greater than 10%														Remove temporary obstruction
Curb ramp running slope is greater than 8.3%				X						X	X		X	
Blended transition running slope is greater than 5%														For intersection, commercial driveway, and park ramps, install color truncated domes
Cut-thru ramp running slope is greater than 5%														
Curb ramp cross slope is greater than 2%			X											Remove and replace landing area
Cut-thru ramp cross slope is greater than 5%														
Curb ramp width is less than 48"														Install push button pole and relocate pedestrian push buttons
Cut-thru ramp width is less than 60"														
Permanent obstruction (>0.25') in curb ramp/landing/flares				X										Remove temporary obstruction
Temporary obstruction (>0.25') in curb ramp/landing/flares				X						X	X	X		
No textured surface at base of curb ramp	X		X	X						X				For intersection, commercial driveway, and park ramps, install color truncated domes
No color contrast at base of curb ramp	X		X	X						X				
Landing area does not exist and is needed														Remove and replace landing area
Landing area is less than 5' x 5' or slopes greater than 2%			X		X	X	X		X	X	X	X	X	
Missing or no pedestrian push buttons														Install push button pole and relocate pedestrian push buttons
Pedestrian push button is offset more than 5' from the nearest crosswalk edge									X	X				
Pedestrian push button offset more than 10' from curb face														Remove and replace pedestrian push button sign
Pedestrian push button is not parallel to crosswalk														
Pedestrian push button height is greater than 48"														Remove and replace pedestrian push button sign
Pedestrian push button diameter is not 2"														
Pedestrian push button sign does not exist														Remove and replace pedestrian push button sign
Pedestrian push button sign is not MUTCD approved				X	X	X	X	X	X		X	X		
Clear floor space does not exist and is needed														Remove and replace clear floor space
Clear floor space for pedestrian push button is less than 30" x 48" or has a slope greater than 2%				X	X		X	X	X				X	
Missing or no pedestrian signal heads														Fix curb ramp transition
Curb ramp transition onto roadway is greater than 0.25"		X	X			X				X	X	X		
Counter slope of the gutter or street at the foot of the curb ramp is greater than 5%	X			X										Fix curb ramp counter slope
Ponding occurs at base of curb ramp			X			X	X						X	Fix ponding



Ramp West F



Ramp 1A



Ramp 1C



Ramp 1D



Ramp 1E



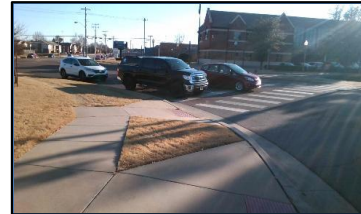
Ramp 2A



Ramp 2B



Ramp 3A



Ramp 3B



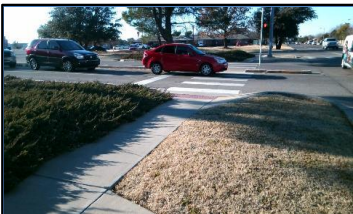
Ramp 4A



Ramp 4C



Ramp 4D



Ramp 4E

Opinion of Probable Construction Cost Disclaimer:

The Engineer has no control over the cost of labor, materials, equipment, or over the Contractor's methods of determining prices or over competitive bidding or market conditions. Opinions of probable costs provided herein are based on the information known to Engineer at this time and represent only the Engineer's judgment as a design professional familiar with the construction industry. The Engineer cannot and does not guarantee that proposals, bids, or actual construction costs will not vary from its opinions of probable costs.

Project Location Map Sources:

Esri, DeLorme, NAVTEQ, USGS, Intermap, iPC, NRCAN, Esri Japan, METI, Esri China (Hong Kong), Esri (Thailand), TomTom, 2013, DigitalGlobe, GeoEye, i-cubed, USDA, AEX, Getmapping, Aerogrip, IGN, IGP, swisstopo, and the GIS User Community

Client: City of Norman Date: 4/30/18
 Program: ADA Self-Evaluation and Transition Plan Prepared By: CMP
 KHA No.: 061298800 Checked By: EPE

Corridor : 24th Ave NW GPS ID: 3
 Project Name: Intersection of 24th Ave NW and Hemphill Dr
 City: Norman

Item No.	Item Description	Quantity	Unit	Unit Price	Item Cost
ODOT 202(A)-0183	Unclassified Excavation	0	CY	\$ 5.50	\$ -
ODOT 609(A)-0300	Concrete Curb (6" Barrier-Integral)	0	LF	\$ 7.00	\$ -
ODOT 610(A)-0602	4" Concrete Sidewalk	39	SY	\$ 50.00	\$ 1,950.00
ODOT 610(U)-4610	Tactile Warning Device - New	40	SF	\$ 25.00	\$ 1,000.00
ODOT 610(U)-4615	Tactile Warning Device - Retrofit	0	SF	\$ 60.00	\$ -
ODOT 619(B)-4792	Removal of Sidewalk	40	SY	\$ 12.00	\$ 480.00
---	Push Button Pole	1	EA	\$ 1,200.00	\$ 1,200.00
ODOT 857(F)-8006	Pavement Marking Removal (Traffic Stripe)	0	LF	\$ 0.25	\$ -
---	Crosswalk Pavement Markings	0	LF	\$ 6.00	\$ -
---	Pedestrian Push Button (APS)	0	EA	\$ 1,200.00	\$ -
---	Removal of Pedestrian Push Buttons	0	EA	\$ 50.00	\$ -
---	Relocate Pedestrian Push Button	1	EA	\$ 300.00	\$ 300.00
---	12" LED Countdown Ped Signal Module with Housing	0	EA	\$ 650.00	\$ -
---	Pedestrian Push Button Sign	4	EA	\$ 150.00	\$ 600.00
---	Remove Pedestrian Push Button Sign	4	EA	\$ 50.00	\$ 200.00
---	Repave Roadway	0	LS	\$ 5,000.00	\$ -
---	Fix Ponding	1	LS	\$ 2,000.00	\$ 2,000.00
---	Fix Curb Ramp Transition	2	LS	\$ 2,000.00	\$ 4,000.00
---	Median Nose Modification	0	LS	\$ 5,000.00	\$ -
---	Remove Temporary Obstruction	0	LS	\$ 500.00	\$ -
---	Fix Curb Ramp Counter Slope	0	LS	\$ 2,000.00	\$ -
				Subtotal:	\$ 11,730.00
				Engineering: (% +/-)	15% \$ 1,830.00
				Contingency: (% +/-)	20% \$ 2,440.00
				Estimated Project Cost:	\$ 16,000.00

- Basis for Cost Projection
- No Design Completed
 - Preliminary Design
 - Final Design

Project Location



Field Observations

Intersection Issues	Crosswalk				Possible Solutions
	N	E	S	W	
Path of travel pavement condition	N/A	N/A	Good	Good	
Path of travel running slope is greater than 5%	N/A	N/A			
Path of travel cross slope is greater than 5%	N/A	N/A			
Crosswalk width is less than 6'	N/A	N/A			
Crosswalk striping condition	N/A	N/A	Good	Good	

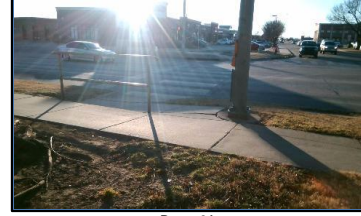
Curb Ramp Issues	Curb Ramp ID ('z' or 'l' in ramp label indicates no existing ramp)				Possible Solutions
	1A	2z	3A	4A	
Curb ramp does not exist and is needed					
Curb ramp does not land in crosswalk					
No 4' x 4' clear space at base of curb ramp					
Curb side is not 90° or has traversable adjacent surface			X		
Flare cross slope is greater than 10%					
Curb ramp running slope is greater than 8.3%	X		X	X	
Blended transition running slope is greater than 5%					
Cut-thru ramp running slope is greater than 5%					
Curb ramp cross slope is greater than 2%			X	X	
Cut-thru ramp cross slope is greater than 5%					
Curb ramp width is less than 48"					
Cut-thru ramp width is less than 60"					
Permanent obstruction (>0.25") in curb ramp/landing/flares	X		X		
Temporary obstruction (>0.25") in curb ramp/landing/flares					
No textured surface at base of curb ramp	X		X		
No color contrast at base of curb ramp	X		X		
Landing area does not exist and is needed					
Landing area is less than 5' x 5' or slopes greater than 2%	X		X	X	
Missing or no pedestrian push buttons					
Pedestrian push button is offset more than 5' from the nearest crosswalk edge				X	
Pedestrian push button offset more than 10' from curb face					
Pedestrian push button is not parallel to crosswalk					
Pedestrian push button height is greater than 48"					
Pedestrian push button diameter is not 2"					
Pedestrian push button sign does not exist					
Pedestrian push button sign is not MUTCD approved	X		X	X	
Clear floor space does not exist and is needed					
Clear floor space for pedestrian push button is less than 30" x 48" or has a slope greater than 2%	X		X	X	
Missing or no pedestrian signal heads					
Curb ramp transition onto roadway is greater than 0.25"	X		X		
Counter slope of the gutter or street at the foot of the curb ramp is greater than 5%					
Ponding occurs at base of curb ramp			X		



Ramp 1A



Corner 2 No Ramp (2z)



Ramp 3A



Ramp 4A

Opinion of Probable Construction Cost Disclaimer:

The Engineer has no control over the cost of labor, materials, equipment, or over the Contractor's methods of determining prices or over competitive bidding or market conditions. Opinions of probable costs provided herein are based on the information known to Engineer at this time and represent only the Engineer's judgment as a design professional familiar with the construction industry. The Engineer cannot and does not guarantee that proposals, bids, or actual construction costs will not vary from its opinions of probable costs.

Project Location Map Sources:

Esri, DeLorme, NAVTEQ, USGS, Intermap, iPC, NRCAN, Esri Japan, METI, Esri China (Hong Kong), Esri (Thailand), TomTom, 2013, DigitalGlobe, GeoEye, i-cubed, USDA, AEX, Getmapping, Aerogrip, IGN, IGP, swisstopo, and the GIS User Community



Ramp East F



Ramp 1A



Ramp 1B



Ramp 2A



Ramp 2B



Ramp 3A



Ramp 3B



Ramp 4A



Ramp 4B

Opinion of Probable Construction Cost Disclaimer:

The Engineer has no control over the cost of labor, materials, equipment, or over the Contractor's methods of determining prices or over competitive bidding or market conditions. Opinions of probable costs provided herein are based on the information known to Engineer at this time and represent only the Engineer's judgment as a design professional familiar with the construction industry. The Engineer cannot and does not guarantee that proposals, bids, or actual construction costs will not vary from its opinions of probable costs.

Project Location Map Sources:

Esri, DeLorme, NAVTEQ, USGS, Intermap, iPC, NRCAN, Esri Japan, METI, Esri China (Hong Kong), Esri (Thailand), TomTom, 2013, DigitalGlobe, GeoEye, i-cubed, USDA, AEX, Getmapping, Aerogrip, IGN, IGP, swisstopo, and the GIS User Community

Client: City of Norman Date: 4/30/18
 Program: ADA Self-Evaluation and Transition Plan Prepared By: CMP
 KHA No.: 061298800 Checked By: EPE

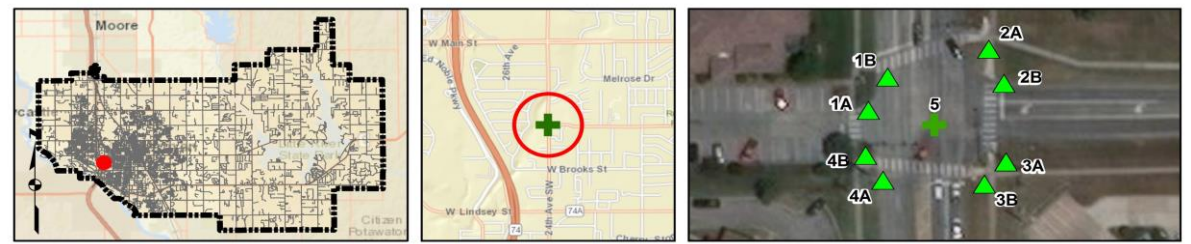
Corridor: 24th Ave SW GPS ID: 5
 Project Name: Intersection of 24th Ave SW and W Boyd St
 City: Norman

Item No.	Item Description	Quantity	Unit	Unit Price	Item Cost
ODOT 202(A)-0183	Unclassified Excavation	0	CY	\$ 5.50	\$ -
ODOT 609(A)-0300	Concrete Curb (6" Barrier-Integral)	0	LF	\$ 7.00	\$ -
ODOT 610(A)-0602	4" Concrete Sidewalk	82	SY	\$ 50.00	\$ 4,100.00
ODOT 610(U)-4610	Tactile Warning Device - New	80	SF	\$ 25.00	\$ 2,000.00
ODOT 610(U)-4615	Tactile Warning Device - Retrofit	0	SF	\$ 60.00	\$ -
ODOT 619(B)-4792	Removal of Sidewalk	90	SY	\$ 12.00	\$ 1,080.00
---	Push Button Pole	4	EA	\$ 1,200.00	\$ 4,800.00
ODOT 857(F)-8006	Pavement Marking Removal (Traffic Stripe)	0	LF	\$ 0.25	\$ -
---	Crosswalk Pavement Markings	243	LF	\$ 6.00	\$ 1,458.00
---	Pedestrian Push Button (APS)	0	EA	\$ 1,200.00	\$ -
---	Removal of Pedestrian Push Buttons	0	EA	\$ 50.00	\$ -
---	Relocate Pedestrian Push Button	4	EA	\$ 300.00	\$ 1,200.00
---	12" LED Countdown Ped Signal Module with Housing	0	EA	\$ 650.00	\$ -
---	Pedestrian Push Button Sign	8	EA	\$ 150.00	\$ 1,200.00
---	Remove Pedestrian Push Button Sign	8	EA	\$ 50.00	\$ 400.00
---	Repave Roadway	2	LS	\$ 5,000.00	\$ 10,000.00
---	Fix Ponding	2	LS	\$ 2,000.00	\$ 4,000.00
---	Fix Curb Ramp Transition	4	LS	\$ 2,000.00	\$ 8,000.00
---	Median Nose Modification	0	LS	\$ 5,000.00	\$ -
---	Remove Temporary Obstruction	0	LS	\$ 500.00	\$ -
---	Fix Curb Ramp Counter Slope	1	LS	\$ 2,000.00	\$ 2,000.00

Basis for Cost Projection

<input checked="" type="checkbox"/> No Design Completed	Subtotal:	\$ 40,238.00
<input type="checkbox"/> Preliminary Design	Engineering: (% +/-)	15% \$ 6,326.57
<input type="checkbox"/> Final Design	Contingency: (% +/-)	20% \$ 8,435.43
	Estimated Project Cost:	\$ 55,000.00

Project Location



Field Observations

Intersection Issues	Crosswalk				Possible Solutions
	N	E	S	W	
Path of travel pavement condition	Good	Dangerous	Dangerous	Good	Repave roadway and install crosswalk pavement markings
Path of travel running slope is greater than 5%					
Path of travel cross slope is greater than 5%					
Crosswalk width is less than 6'					
Crosswalk striping condition	Good	Good	Good	Good	

Curb Ramp Issues	Curb Ramp ID ('z' or 'i' in ramp label indicates no existing ramp)								Possible Solutions
	1A	1B	2A	2B	3A	3B	4A	4B	
Curb ramp does not exist and is needed									Remove and replace curb ramp
Curb ramp does not land in crosswalk									
No 4' x 4' clear space at base of curb ramp									
Curb side is not 90° or has traversable adjacent surface			X	X	X	X	X		
Flare cross slope is greater than 10%			X				X		
Curb ramp running slope is greater than 8.3%									
Blended transition running slope is greater than 5%									
Cut-thru ramp running slope is greater than 5%									
Curb ramp cross slope is greater than 2%	X			X			X		
Cut-thru ramp cross slope is greater than 5%									
Curb ramp width is less than 48"	X	X						X	
Cut-thru ramp width is less than 60"									
Permanent obstruction (>0.25") in curb ramp/landing/flares	X	X						X	
Temporary obstruction (>0.25") in curb ramp/landing/flares									
No textured surface at base of curb ramp	X	X						X	
No color contrast at base of curb ramp	X	X						X	
Landing area does not exist and is needed									
Landing area is less than 5' x 5' or slopes greater than 2%	X	X		X					
Missing or no pedestrian push buttons									
Pedestrian push button is offset more than 5' from the nearest crosswalk edge									
Pedestrian push button offset more than 10' from curb face				X	X			X	
Pedestrian push button is not parallel to crosswalk									
Pedestrian push button height is greater than 48"									
Pedestrian push button diameter is not 2"									
Pedestrian push button sign does not exist									
Pedestrian push button sign is not MUTCD approved	X	X	X	X	X	X	X	X	
Clear floor space does not exist and is needed									
Clear floor space for pedestrian push button is less than 30" x 48" or has a slope greater than 2%	X	X	X	X				X	
Missing or no pedestrian signal heads									
Curb ramp transition onto roadway is greater than 0.25"	X						X	X	
Counter slope of the gutter or street at the foot of the curb ramp is greater than 5%			X						
Ponding occurs at base of curb ramp	X							X	



Ramp 1A



Ramp 1B



Ramp 2A



Ramp 2B



Ramp 3A



Ramp 3B



Ramp 4A



Ramp 4B

Opinion of Probable Construction Cost Disclaimer:

The Engineer has no control over the cost of labor, materials, equipment, or over the Contractor's methods of determining prices or over competitive bidding or market conditions. Opinions of probable costs provided herein are based on the information known to Engineer at this time and represent only the Engineer's judgment as a design professional familiar with the construction industry. The Engineer cannot and does not guarantee that proposals, bids, or actual construction costs will not vary from its opinions of probable costs.

Project Location Map Sources:

Esri, DeLorme, NAVTEQ, USGS, Intermap, iPC, NRCAN, Esri Japan, METI, Esri China (Hong Kong), Esri (Thailand), TomTom, 2013, DigitalGlobe, GeoEye, i-cubed, USDA, AEX, Getmapping, Aerogrip, IGN, IGP, swisstopo, and the GIS User Community

Kimley-Horn and Associates, Inc. Priority: 2
Project Description for Signalized Intersection

Client: City of Norman Date: 4/30/18
Program: ADA Self-Evaluation and Transition Plan Prepared By: CMP
KHA No.: 061298800 Checked By: EPE

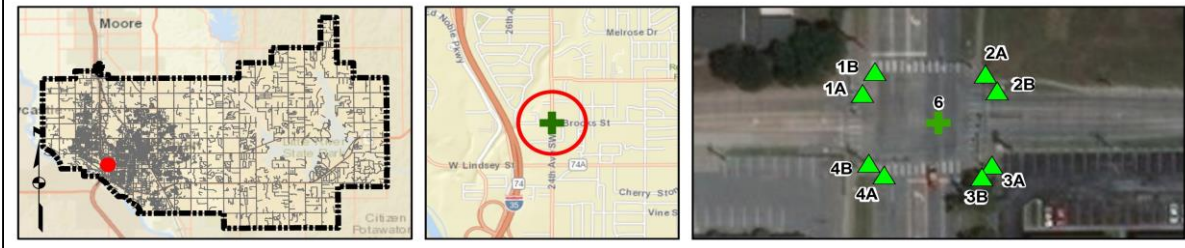
Corridor : 24th Ave SW GPS ID: 6
Project Name: Intersection of 24th Ave SW and Brooks St
City: Norman

Item No.	Item Description	Quantity	Unit	Unit Price	Item Cost
ODOT 202(A)-0183	Unclassified Excavation	0	CY	\$ 5.50	\$ -
ODOT 609(A)-0300	Concrete Curb (6" Barrier-Integral)	0	LF	\$ 7.00	\$ -
ODOT 610(A)-0602	4" Concrete Sidewalk	71	SY	\$ 50.00	\$ 3,550.00
ODOT 610(U)-4610	Tactile Warning Device - New	80	SF	\$ 25.00	\$ 2,000.00
ODOT 610(U)-4615	Tactile Warning Device - Retrofit	0	SF	\$ 60.00	\$ -
ODOT 619(B)-4792	Removal of Sidewalk	86	SY	\$ 12.00	\$ 1,032.00
---	Push Button Pole	0	EA	\$ 1,200.00	\$ -
ODOT 857(F)-8006	Pavement Marking Removal (Traffic Stripe)	0	LF	\$ 0.25	\$ -
---	Crosswalk Pavement Markings	489	LF	\$ 6.00	\$ 2,934.00
---	Pedestrian Push Button (APS)	0	EA	\$ 1,200.00	\$ -
---	Removal of Pedestrian Push Buttons	0	EA	\$ 50.00	\$ -
---	Relocate Pedestrian Push Button	0	EA	\$ 300.00	\$ -
---	12" LED Countdown Ped Signal Module with Housing	0	EA	\$ 650.00	\$ -
---	Pedestrian Push Button Sign	0	EA	\$ 150.00	\$ -
---	Remove Pedestrian Push Button Sign	0	EA	\$ 50.00	\$ -
---	Repave Roadway	4	LS	\$ 5,000.00	\$ 20,000.00
---	Fix Ponding	3	LS	\$ 2,000.00	\$ 6,000.00
---	Fix Curb Ramp Transition	3	LS	\$ 2,000.00	\$ 6,000.00
---	Median Nose Modification	0	LS	\$ 5,000.00	\$ -
---	Remove Temporary Obstruction	2	LS	\$ 500.00	\$ 1,000.00
---	Fix Curb Ramp Counter Slope	1	LS	\$ 2,000.00	\$ 2,000.00

Basis for Cost Projection
 No Design Completed
 Preliminary Design
 Final Design

Subtotal:	\$	44,516.00
Engineering: (% +/-)	15%	\$ 7,064.57
Contingency: (% +/-)	20%	\$ 9,419.43
Estimated Project Cost:	\$	61,000.00

Project Location



Field Observations

Intersection Issues	Crosswalk				Possible Solutions
	N	E	S	W	
Path of travel pavement condition	Dangerous	Dangerous	Dangerous	Poor	Repave roadway and install crosswalk pavement markings
Path of travel running slope is greater than 5%					
Path of travel cross slope is greater than 5%					
Crosswalk width is less than 6'					
Crosswalk striping condition	Good	Good	Good	Worn	Install crosswalk pavement markings

Curb Ramp Issues	Curb Ramp ID ('z' or 'i' in ramp label indicates no existing ramp)								Possible Solutions
	1A	1B	2A	2B	3A	3B	4A	4B	
Curb ramp does not exist and is needed									
Curb ramp does not land in crosswalk									
No 4' x 4' clear space at base of curb ramp									
Curbed side is not 90° or has traversable adjacent surface	X	X	X	X	X	X	X	X	Remove and replace curb ramp
Flare cross slope is greater than 10%									
Curb ramp running slope is greater than 8.3%						X	X		
Blended transition running slope is greater than 5%									
Cut-thru ramp running slope is greater than 5%									
Curb ramp cross slope is greater than 2%	X			X	X	X	X		
Cut-thru ramp cross slope is greater than 5%									
Curb ramp width is less than 48"		X					X	X	
Cut-thru ramp width is less than 60"									
Permanent obstruction (>0.25") in curb ramp/landing/flares	X				X	X	X	X	
Temporary obstruction (>0.25") in curb ramp/landing/flares			X	X					
No textured surface at base of curb ramp	X	X	X	X	X	X	X	X	For intersection, commercial driveway, and park ramps, install color truncated domes
No color contrast at base of curb ramp	X	X	X	X	X	X	X	X	
Landing area does not exist and is needed									Remove and replace landing area
Landing area is less than 5' x 5' or slopes greater than 2%			X	X	X	X	X	X	
Missing or no pedestrian push buttons									
Pedestrian push button is offset more than 5' from the nearest crosswalk edge									
Pedestrian push button offset more than 10' from curb face									
Pedestrian push button is not parallel to crosswalk									
Pedestrian push button height is greater than 48"									
Pedestrian push button diameter is not 2"									
Pedestrian push button sign does not exist									
Pedestrian push button sign is not MUTCD approved									
Clear floor space does not exist and is needed						X			Install clear floor space
Clear floor space for pedestrian push button is less than 30" x 48" or has a slope greater than 2%		X	X		X		X	X	Remove and replace clear floor space
Missing or no pedestrian signal heads									
Curb ramp transition onto roadway is greater than 0.25"					X	X	X		Fix curb ramp transition
Counter slope of the gutter or street at the foot of the curb ramp is greater than 5%					X				Fix curb ramp counter slope
Ponding occurs at base of curb ramp			X	X	X				Fix ponding



Ramp 1A



Ramp 1B



Ramp 2A



Ramp 2B



Ramp 3A



Ramp 3B



Ramp 4A



Ramp 4B

Opinion of Probable Construction Cost Disclaimer:

The Engineer has no control over the cost of labor, materials, equipment, or over the Contractor's methods of determining prices or over competitive bidding or market conditions. Opinions of probable costs provided herein are based on the information known to Engineer at this time and represent only the Engineer's judgment as a design professional familiar with the construction industry. The Engineer cannot and does not guarantee that proposals, bids, or actual construction costs will not vary from its opinions of probable costs.

Project Location Map Sources:

Esri, DeLorme, NAVTEQ, USGS, Intermap, iPC, NRCAN, Esri Japan, METI, Esri China (Hong Kong), Esri (Thailand), TomTom, 2013, DigitalGlobe, GeoEye, i-cubed, USDA, AEX, Getmapping, Aerogrip, IGN, IGP, swisstopo, and the GIS User Community

Client: City of Norman Date: 4/30/18
 Program: ADA Self-Evaluation and Transition Plan Prepared By: CMP
 KHA No.: 061298800 Checked By: EPE

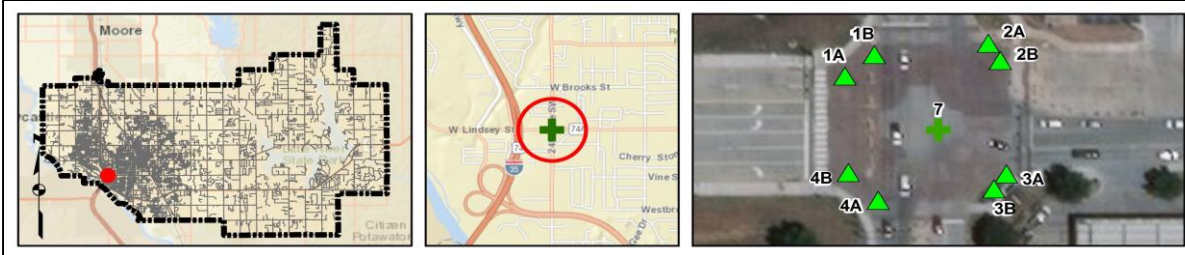
Corridor : 24th Ave SW GPS ID: 7
 Project Name: Intersection of 24th Ave SW and W Lindsey St
 City: Norman

Item No.	Item Description	Quantity	Unit	Unit Price	Item Cost
ODOT 202(A)-0183	Unclassified Excavation	0	CY	\$ 5.50	\$ -
ODOT 609(A)-0300	Concrete Curb (6" Barrier-Integral)	0	LF	\$ 7.00	\$ -
ODOT 610(A)-0602	4" Concrete Sidewalk	12	SY	\$ 50.00	\$ 600.00
ODOT 610(U)-4610	Tactile Warning Device - New	10	SF	\$ 25.00	\$ 250.00
ODOT 610(U)-4615	Tactile Warning Device - Retrofit	0	SF	\$ 60.00	\$ -
ODOT 619(B)-4792	Removal of Sidewalk	10	SY	\$ 12.00	\$ 120.00
---	Push Button Pole	1	EA	\$ 1,200.00	\$ 1,200.00
ODOT 857(F)-8006	Pavement Marking Removal (Traffic Stripe)	0	LF	\$ 0.25	\$ -
---	Crosswalk Pavement Markings	0	LF	\$ 6.00	\$ -
---	Pedestrian Push Button (APS)	0	EA	\$ 1,200.00	\$ -
---	Removal of Pedestrian Push Buttons	0	EA	\$ 50.00	\$ -
---	Relocate Pedestrian Push Button	1	EA	\$ 300.00	\$ 300.00
---	12" LED Countdown Ped Signal Module with Housing	0	EA	\$ 650.00	\$ -
---	Pedestrian Push Button Sign	0	EA	\$ 150.00	\$ -
---	Remove Pedestrian Push Button Sign	0	EA	\$ 50.00	\$ -
---	Repave Roadway	3	LS	\$ 5,000.00	\$ 6,000.00
---	Fix Ponding	2	LS	\$ 2,000.00	\$ 4,000.00
---	Fix Curb Ramp Transition	2	LS	\$ 2,000.00	\$ 4,000.00
---	Median Nose Modification	0	LS	\$ 5,000.00	\$ -
---	Remove Temporary Obstruction	0	LS	\$ 500.00	\$ -
---	Fix Curb Ramp Counter Slope	0	LS	\$ 2,000.00	\$ -

Basis for Cost Projection

<input checked="" type="checkbox"/> No Design Completed	Subtotal:	\$ 12,470.00
<input type="checkbox"/> Preliminary Design	Engineering: (% +/-)	15% \$ 1,941.43
<input type="checkbox"/> Final Design	Contingency: (% +/-)	20% \$ 2,588.57
	Estimated Project Cost:	\$ 17,000.00

Project Location



Field Observations

Intersection Issues	Crosswalk				Possible Solutions
	N	E	S	W	
Path of travel pavement condition	Good	Good	Good	Good	
Path of travel running slope is greater than 5%					
Path of travel cross slope is greater than 5%					
Crosswalk width is less than 6'					
Crosswalk striping condition	Good	Good	Good	Good	

Curb Ramp Issues	Curb Ramp ID ('z' or 'l' in ramp label indicates no existing ramp)								Possible Solutions
	1A	1B	2A	2B	3A	3B	4A	4B	
Curb ramp does not exist and is needed									
Curb ramp does not land in crosswalk									
No 4' x 4' clear space at base of curb ramp									
Curb side is not 90° or has traversable adjacent surface						X			
Flare cross slope is greater than 10%									
Curb ramp running slope is greater than 8.3%									
Blended transition running slope is greater than 5%									
Cut-thru ramp running slope is greater than 5%									
Curb ramp cross slope is greater than 2%									
Cut-thru ramp cross slope is greater than 5%									
Curb ramp width is less than 48"									
Cut-thru ramp width is less than 60"									
Permanent obstruction (>0.25") in curb ramp/landing/flares									
Temporary obstruction (>0.25") in curb ramp/landing/flares									
No textured surface at base of curb ramp									
No color contrast at base of curb ramp									
Landing area does not exist and is needed									
Landing area is less than 5' x 5' or slopes greater than 2%									
Missing or no pedestrian push buttons									
Pedestrian push button is offset more than 5' from the nearest crosswalk edge									
Pedestrian push button offset more than 10' from curb face						X			
Pedestrian push button is not parallel to crosswalk									
Pedestrian push button height is greater than 48"									
Pedestrian push button diameter is not 2"									
Pedestrian push button sign does not exist									
Pedestrian push button sign is not MUTCD approved									
Clear floor space does not exist and is needed							X	X	
Clear floor space for pedestrian push button is less than 30" x 48" or has a slope greater than 2%		X		X					
Missing or no pedestrian signal heads									
Curb ramp transition onto roadway is greater than 0.25"	X	X							
Counter slope of the gutter or street at the foot of the curb ramp is greater than 5%									
Ponding occurs at base of curb ramp	X	X	X						



Ramp 1A



Ramp 1B



Ramp 2A



Ramp 2B



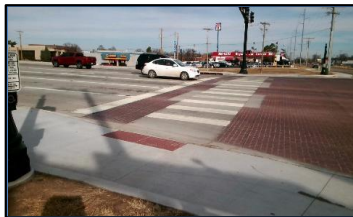
Ramp 3A



Ramp 3B



Ramp 4A



Ramp 4B

Opinion of Probable Construction Cost Disclaimer:

The Engineer has no control over the cost of labor, materials, equipment, or over the Contractor's methods of determining prices or over competitive bidding or market conditions. Opinions of probable costs provided herein are based on the information known to Engineer at this time and represent only the Engineer's judgment as a design professional familiar with the construction industry. The Engineer cannot and does not guarantee that proposals, bids, or actual construction costs will not vary from its opinions of probable costs.

Project Location Map Sources:

Esri, DeLorme, NAVTEQ, USGS, Intermap, iPC, NRCAN, Esri Japan, METI, Esri China (Hong Kong), Esri (Thailand), TomTom, 2013, DigitalGlobe, GeoEye, i-cubed, USDA, AEX, Getmapping, Aerogrip, IGN, IGP, swisstopo, and the GIS User Community

Client: City of Norman Date: 5/2/18
 Program: ADA Self-Evaluation and Transition Plan Prepared By: CMP
 KHA No.: 061298800 Checked By: EPE

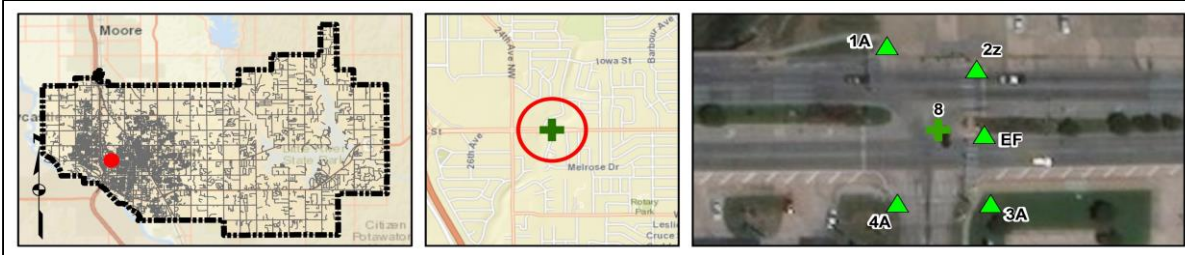
Corridor: W Main St GPS ID: 8
 Project Name: Intersection of W Main St and Hal Muldrow Dr
 City: Norman

Item No.	Item Description	Quantity	Unit	Unit Price	Item Cost
ODOT 202(A)-0183	Unclassified Excavation	0	CY	\$ 5.50	\$ -
ODOT 609(A)-0300	Concrete Curb (6" Barrier-Integral)	26	LF	\$ 7.00	\$ 182.00
ODOT 610(A)-0602	4" Concrete Sidewalk	47	SY	\$ 50.00	\$ 2,350.00
ODOT 610(U)-4610	Tactile Warning Device - New	60	SF	\$ 25.00	\$ 1,500.00
ODOT 610(U)-4615	Tactile Warning Device - Retrofit	0	SF	\$ 60.00	\$ -
ODOT 619(B)-4792	Removal of Sidewalk	41	SY	\$ 12.00	\$ 492.00
---	Push Button Pole	2	EA	\$ 1,200.00	\$ 2,400.00
---	Pavement Marking Removal (Traffic Stripe)	0	LF	\$ 0.25	\$ -
ODOT 857(F)-8006	Crosswalk Pavement Markings	402	LF	\$ 6.00	\$ 2,412.00
---	Pedestrian Push Button (APS)	2	EA	\$ 1,200.00	\$ 2,400.00
---	Removal of Pedestrian Push Buttons	0	EA	\$ 50.00	\$ -
---	Relocate Pedestrian Push Button	0	EA	\$ 300.00	\$ -
---	12" LED Countdown Ped Signal Module with Housing	2	EA	\$ 650.00	\$ 1,300.00
---	Pedestrian Push Button Sign	4	EA	\$ 150.00	\$ 600.00
---	Remove Pedestrian Push Button Sign	4	EA	\$ 50.00	\$ 200.00
---	Repave Roadway	3	LS	\$ 5,000.00	\$ 15,000.00
---	Fix Ponding	1	LS	\$ 2,000.00	\$ 2,000.00
---	Fix Curb Ramp Transition	2	LS	\$ 2,000.00	\$ 4,000.00
---	Median Nose Modification	0	LS	\$ 5,000.00	\$ -
---	Remove Temporary Obstruction	0	LS	\$ 500.00	\$ -
---	Fix Curb Ramp Counter Slope	0	LS	\$ 2,000.00	\$ -

Basis for Cost Projection

<input checked="" type="checkbox"/> No Design Completed	Subtotal:	\$ 34,836.00
<input type="checkbox"/> Preliminary Design	Engineering: (% +/-)	15% \$ 5,641.71
<input type="checkbox"/> Final Design	Contingency: (% +/-)	20% \$ 7,522.29
	Estimated Project Cost:	\$ 48,000.00

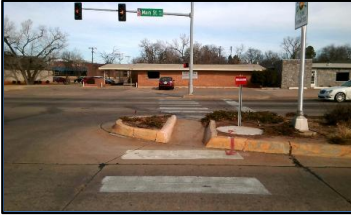
Project Location



Field Observations

Intersection Issues	Crosswalk				Possible Solutions
	N	E	S	W	
Path of travel pavement condition	Dangerous	Dangerous	Poor	N/A	Repave roadway and install crosswalk pavement markings
Path of travel running slope is greater than 5%				N/A	
Path of travel cross slope is greater than 5%				N/A	
Crosswalk width is less than 6'	N/A			N/A	
Crosswalk striping condition	None	Good	Good	N/A	Install crosswalk pavement markings

Curb Ramp Issues	Curb Ramp ID ('z' or 'l' in ramp label indicates no existing ramp)				Possible Solutions
	EF	1A	2z	3A	
Curb ramp does not exist and is needed	X				Remove and replace cut-thru ramp
Curb ramp does not land in crosswalk					
No 4' x 4' clear space at base of curb ramp					
Curb side is not 90° or has traversable adjacent surface			X	X	
Flare cross slope is greater than 10%					
Curb ramp running slope is greater than 8.3%					
Blended transition running slope is greater than 5%					
Cut-thru ramp running slope is greater than 5%					
Curb ramp cross slope is greater than 2%			X		Remove and replace curb ramp
Cut-thru ramp cross slope is greater than 5%					
Curb ramp width is less than 48"					
Cut-thru ramp width is less than 60"	X				
Permanent obstruction (>0.25") in curb ramp/landing/flares	X				
Temporary obstruction (>0.25") in curb ramp/landing/flares	X	X			
No textured surface at base of curb ramp	X	X			For intersection, commercial driveway, and park ramps, install color truncated domes
No color contrast at base of curb ramp	X	X			
Landing area does not exist and is needed					
Landing area is less than 5' x 5' or slopes greater than 2%	X		X		Remove and replace landing area
Missing or no pedestrian push buttons	X	X			Install push button pole and APS push buttons
Pedestrian push button is offset more than 5' from the nearest crosswalk edge					
Pedestrian push button offset more than 10' from curb face					
Pedestrian push button is not parallel to crosswalk					
Pedestrian push button height is greater than 48"					
Pedestrian push button diameter is not 2"					
Pedestrian push button sign does not exist					
Pedestrian push button sign is not MUTCD approved		X	X	X	Remove and replace pedestrian push button sign
Clear floor space does not exist and is needed	X	X			Install clear floor space
Clear floor space for pedestrian push button is less than 30" x 48" or has a slope greater than 2%				X	Remove and replace clear floor space
Missing or no pedestrian signal heads	X	X			Install countdown pedestrian signal head
Curb ramp transition onto roadway is greater than 0.25"	X	X			Fix curb ramp transition
Counter slope of the gutter or street at the foot of the curb ramp is greater than 5%					
Ponding occurs at base of curb ramp	X				Fix ponding



Ramp East F



Ramp 1A



Corner 2 No Ramp (2z)



Ramp 3A



Ramp 4A

Opinion of Probable Construction Cost Disclaimer:

The Engineer has no control over the cost of labor, materials, equipment, or over the Contractor's methods of determining prices or over competitive bidding or market conditions. Opinions of probable costs provided herein are based on the information known to Engineer at this time and represent only the Engineer's judgment as a design professional familiar with the construction industry. The Engineer cannot and does not guarantee that proposals, bids, or actual construction costs will not vary from its opinions of probable costs.

Project Location Map Sources:

Esri, DeLorme, NAVTEQ, USGS, Intermap, iPC, NRCAN, Esri Japan, METI, Esri China (Hong Kong), Esri (Thailand), TomTom, 2013, DigitalGlobe, GeoEye, i-cubed, USDA, AEX, Getmapping, Aerogrip, IGN, IGP, swisstopo, and the GIS User Community

Client: City of Norman **Date:** 4/30/18
Program: ADA Self-Evaluation and Transition Plan **Prepared By:** CMP
KHA No.: 061298800 **Checked By:** EPE

Corridor : W Main St **GPS ID:** 9
Project Name: Intersection of W Main St and N Mercedes Dr
City: Norman

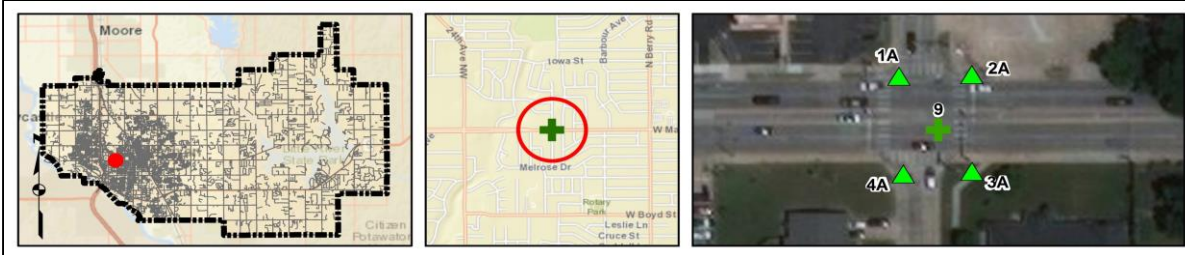
Item No.	Item Description	Quantity	Unit	Unit Price	Item Cost
ODOT 202(A)-0183	Unclassified Excavation	0	CY	\$ 5.50	\$ -
ODOT 609(A)-0300	Concrete Curb (6" Barrier-Integral)	0	LF	\$ 7.00	\$ -
ODOT 610(A)-0602	4" Concrete Sidewalk	84	SY	\$ 50.00	\$ 4,200.00
ODOT 610(U)-4610	Tactile Warning Device - New	80	SF	\$ 25.00	\$ 2,000.00
ODOT 610(U)-4615	Tactile Warning Device - Retrofit	0	SF	\$ 60.00	\$ -
ODOT 619(B)-4792	Removal of Sidewalk	58	SY	\$ 12.00	\$ 696.00
---	Push Button Pole	3	EA	\$ 1,200.00	\$ 3,600.00
ODOT 857(F)-8006	Pavement Marking Removal (Traffic Stripe)	0	LF	\$ 0.25	\$ -
---	Crosswalk Pavement Markings	458	LF	\$ 6.00	\$ 2,748.00
---	Pedestrian Push Button (APS)	0	EA	\$ 1,200.00	\$ -
---	Removal of Pedestrian Push Buttons	0	EA	\$ 50.00	\$ -
---	Relocate Pedestrian Push Button	5	EA	\$ 300.00	\$ 1,500.00
---	12" LED Countdown Ped Signal Module with Housing	0	EA	\$ 650.00	\$ -
---	Pedestrian Push Button Sign	8	EA	\$ 150.00	\$ 1,200.00
---	Remove Pedestrian Push Button Sign	4	EA	\$ 50.00	\$ 400.00
---	Repave Roadway	1	LS	\$ 5,000.00	\$ 20,000.00
---	Fix Ponding	1	LS	\$ 2,000.00	\$ 2,000.00
---	Fix Curb Ramp Transition	4	LS	\$ 2,000.00	\$ 8,000.00
---	Median Nose Modification	0	LS	\$ 5,000.00	\$ -
---	Remove Temporary Obstruction	0	LS	\$ 500.00	\$ -
---	Fix Curb Ramp Counter Slope	1	LS	\$ 2,000.00	\$ 2,000.00

Basis for Cost Projection

- No Design Completed
- Preliminary Design
- Final Design

Subtotal:	\$	48,344.00
Engineering: (% +/-)	15%	\$ 7,566.86
Contingency: (% +/-)	20%	\$ 10,089.14
Estimated Project Cost:	\$	66,000.00

Project Location



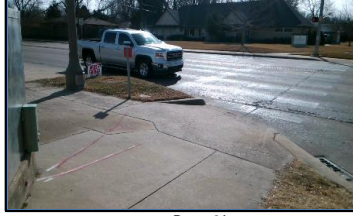
Field Observations

Intersection Issues	Crosswalk				Possible Solutions
	N	E	S	W	
Path of travel pavement condition	Dangerous	Dangerous	Dangerous	Dangerous	Repave roadway and install crosswalk pavement markings
Path of travel running slope is greater than 5%					
Path of travel cross slope is greater than 5%					
Crosswalk width is less than 6'					
Crosswalk striping condition	Good	Good	Good	Worn	Install crosswalk pavement markings

Curb Ramp Issues	Curb Ramp ID ('2' or '1' in ramp label indicates no existing ramp)				Possible Solutions
	1A	2A	3A	4A	
Curb ramp does not exist and is needed					
Curb ramp does not land in crosswalk					
No 4' x 4' clear space at base of curb ramp			X		Remove and replace crosswalk pavement markings
Curb side is not 90° or has traversable adjacent surface	X		X	X	
Flare cross slope is greater than 10%			X		
Curb ramp running slope is greater than 8.3%	X	X	X	X	
Blended transition running slope is greater than 5%					
Cut-thru ramp running slope is greater than 5%					
Curb ramp cross slope is greater than 2%		X			Remove and replace curb ramp
Cut-thru ramp cross slope is greater than 5%					
Curb ramp width is less than 48"	X				
Cut-thru ramp width is less than 60"					
Permanent obstruction (>0.25") in curb ramp/landing/flares	X		X		
Temporary obstruction (>0.25") in curb ramp/landing/flares					
No textured surface at base of curb ramp	X	X	X	X	For intersection, commercial driveway, and park ramps, install color truncated domes
No color contrast at base of curb ramp	X	X	X	X	
Landing area does not exist and is needed					
Landing area is less than 5' x 5' or slopes greater than 2%	X			X	Remove and replace landing area
Missing or no pedestrian push buttons					
Pedestrian push button is offset more than 5' from the nearest crosswalk edge		X	X		Install push button pole and relocate pedestrian push buttons
Pedestrian push button offset more than 10' from curb face					
Pedestrian push button is not parallel to crosswalk					
Pedestrian push button height is greater than 48"				X	Relocate pedestrian push buttons
Pedestrian push button diameter is not 2"					
Pedestrian push button sign does not exist					
Pedestrian push button sign is not MUTCD approved	X	X	X	X	Remove and replace pedestrian push button sign
Clear floor space does not exist and is needed				X	Install clear floor space
Clear floor space for pedestrian push button is less than 30" x 48" or has a slope greater than 2%	X		X		Remove and replace clear floor space
Missing or no pedestrian signal heads					
Curb ramp transition onto roadway is greater than 0.25"	X	X	X	X	Fix curb ramp transition
Counter slope of the gutter or street at the foot of the curb ramp is greater than 5%			X		Fix curb ramp counter slope
Ponding occurs at base of curb ramp	X				Fix ponding



Ramp 1A



Ramp 2A



Ramp 3A



Ramp 4A

Opinion of Probable Construction Cost Disclaimer:

The Engineer has no control over the cost of labor, materials, equipment, or over the Contractor's methods of determining prices or over competitive bidding or market conditions. Opinions of probable costs provided herein are based on the information known to Engineer at this time and represent only the Engineer's judgment as a design professional familiar with the construction industry. The Engineer cannot and does not guarantee that proposals, bids, or actual construction costs will not vary from its opinions of probable costs.

Project Location Map Sources:

Esri, DeLorme, NAVTEQ, USGS, Intermap, iPC, NRCAN, Esri Japan, METI, Esri China (Hong Kong), Esri (Thailand), TomTom, 2013, DigitalGlobe, GeoEye, i-cubed, USDA, AEX, Getmapping, Aerogrip, IGN, IGP, swisstopo, and the GIS User Community

Client: City of Norman Date: 4/30/18
 Program: ADA Self-Evaluation and Transition Plan Prepared By: CMP
 KHA No.: 061298800 Checked By: EPE

Corridor: W Main St GPS ID: 10
 Project Name: Intersection of W Main St and N Berry Rd
 City: Norman

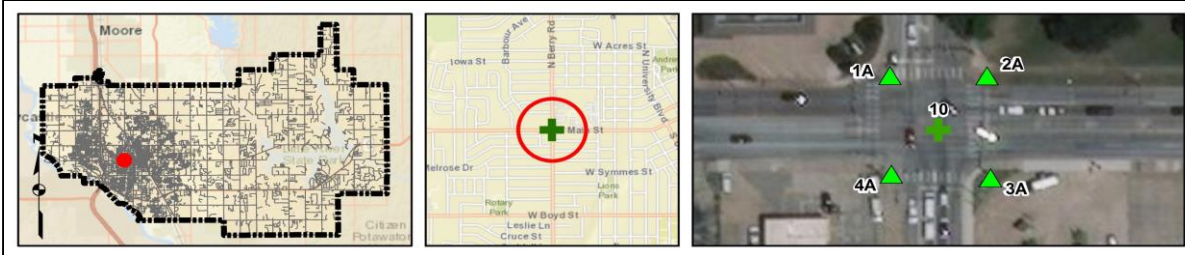
Item No.	Item Description	Quantity	Unit	Unit Price	Item Cost
ODOT 202(A)-0183	Unclassified Excavation	0	CY	\$ 5.50	\$ -
ODOT 609(A)-0300	Concrete Curb (6" Barrier-Integral)	0	LF	\$ 7.00	\$ -
ODOT 610(A)-0602	4' Concrete Sidewalk	95	SY	\$ 50.00	\$ 4,750.00
ODOT 610(U)-4610	Tactile Warning Device - New	80	SF	\$ 25.00	\$ 2,000.00
ODOT 610(U)-4615	Tactile Warning Device - Retrofit	0	SF	\$ 60.00	\$ -
ODOT 619(B)-4792	Removal of Sidewalk	58	SY	\$ 12.00	\$ 696.00
---	Push Button Pole	2	EA	\$ 1,200.00	\$ 2,400.00
ODOT 857(F)-8006	Pavement Marking Removal (Traffic Stripe)	160	LF	\$ 0.25	\$ 40.00
---	Crosswalk Pavement Markings	544	LF	\$ 6.00	\$ 3,264.00
---	Pedestrian Push Button (APS)	0	EA	\$ 1,200.00	\$ -
---	Removal of Pedestrian Push Buttons	0	EA	\$ 50.00	\$ -
---	Relocate Pedestrian Push Button	2	EA	\$ 300.00	\$ 600.00
---	12" LED Countdown Ped Signal Module with Housing	0	EA	\$ 650.00	\$ -
---	Pedestrian Push Button Sign	0	EA	\$ 150.00	\$ -
---	Remove Pedestrian Push Button Sign	0	EA	\$ 50.00	\$ -
---	Repave Roadway	2	LS	\$ 5,000.00	\$ 10,000.00
---	Fix Ponding	0	LS	\$ 2,000.00	\$ -
---	Fix Curb Ramp Transition	1	LS	\$ 2,000.00	\$ 2,000.00
---	Median Nose Modification	0	LS	\$ 5,000.00	\$ -
---	Remove Temporary Obstruction	0	LS	\$ 500.00	\$ -
---	Fix Curb Ramp Counter Slope	0	LS	\$ 2,000.00	\$ -

Basis for Cost Projection

- No Design Completed
- Preliminary Design
- Final Design

Subtotal:	\$	25,750.00
Engineering: (% +/-)	15%	\$ 3,964.29
Contingency: (% +/-)	20%	\$ 5,285.71
Estimated Project Cost:	\$	35,000.00

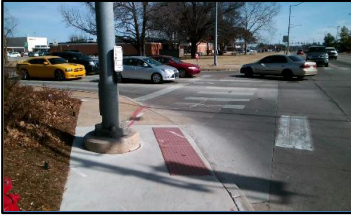
Project Location



Field Observations

Intersection Issues	Crosswalk				Possible Solutions
	N	E	S	W	
Path of travel pavement condition	Dangerous	Good	Dangerous	Good	Repave roadway and install crosswalk pavement markings
Path of travel running slope is greater than 5%					
Path of travel cross slope is greater than 5%					
Crosswalk width is less than 6'					
Crosswalk striping condition	Good	Good	Good	Worn	Install crosswalk pavement markings

Curb Ramp Issues	Curb Ramp ID ('2' or '1' in ramp label indicates no existing ramp)				Possible Solutions
	1A	2A	3A	4A	
Curb ramp does not exist and is needed					
Curb ramp does not land in crosswalk					
No 4' x 4' clear space at base of curb ramp		X	X		Remove and replace crosswalk pavement markings
Curbed side is not 90° or has traversable adjacent surface	X		X	X	
Flare cross slope is greater than 10%		X	X		
Curb ramp running slope is greater than 8.3%					
Blended transition running slope is greater than 5%					
Cut-thru ramp running slope is greater than 5%					
Curb ramp cross slope is greater than 2%				X	Remove and replace curb ramp
Cut-thru ramp cross slope is greater than 5%					
Curb ramp width is less than 48"	X				
Cut-thru ramp width is less than 60"					
Permanent obstruction (>0.25") in curb ramp/landing/flares	X	X		X	
Temporary obstruction (>0.25") in curb ramp/landing/flares					
No textured surface at base of curb ramp		X		X	For intersection, commercial driveway, and park ramps, install color truncated domes
No color contrast at base of curb ramp		X	X	X	Install landing area
Landing area does not exist and is needed	X				Remove and replace landing area
Landing area is less than 5' x 5' or slopes greater than 2%				X	
Missing or no pedestrian push buttons					
Pedestrian push button is offset more than 5' from the nearest crosswalk edge		X			Install push button pole and relocate pedestrian push buttons
Pedestrian push button offset more than 10' from curb face		X			
Pedestrian push button is not parallel to crosswalk					
Pedestrian push button height is greater than 48"					
Pedestrian push button diameter is not 2"					
Pedestrian push button sign does not exist					
Pedestrian push button sign is not MUTCD approved					
Clear floor space does not exist and is needed				X	Install clear floor space
Clear floor space for pedestrian push button is less than 30" x 48" or has a slope greater than 2%	X			X	Remove and replace clear floor space
Missing or no pedestrian signal heads					
Curb ramp transition onto roadway is greater than 0.25"				X	Fix curb ramp transition
Counter slope of the gutter or street at the foot of the curb ramp is greater than 5%					
Ponding occurs at base of curb ramp					



Ramp 1A



Ramp 2A



Ramp 3A



Ramp 4A

Opinion of Probable Construction Cost Disclaimer:

The Engineer has no control over the cost of labor, materials, equipment, or over the Contractor's methods of determining prices or over competitive bidding or market conditions. Opinions of probable costs provided herein are based on the information known to Engineer at this time and represent only the Engineer's judgment as a design professional familiar with the construction industry. The Engineer cannot and does not guarantee that proposals, bids, or actual construction costs will not vary from its opinions of probable costs.

Project Location Map Sources:

Esri, DeLorme, NAVTEQ, USGS, Intermap, iPC, NRCAN, Esri Japan, METI, Esri China (Hong Kong), Esri (Thailand), TomTom, 2013, DigitalGlobe, GeoEye, i-cubed, USDA, AEX, Getmapping, Aerogrip, IGN, IGP, swisstopo, and the GIS User Community

Client: City of Norman Date: 4/30/18
 Program: ADA Self-Evaluation and Transition Plan Prepared By: CMP
 KHA No.: 061298800 Checked By: EPE

Corridor : GPS ID: 11
 Project Name: Intersection of N Webster Ave and W Gray St
 City: Norman

Item No.	Item Description	Quantity	Unit	Unit Price	Item Cost
ODOT 202(A)-0183	Unclassified Excavation	0	CY	\$ 5.50	\$ -
ODOT 609(A)-0300	Concrete Curb (6" Barrier-Integral)	0	LF	\$ 7.00	\$ -
ODOT 610(A)-0602	4" Concrete Sidewalk	58	SY	\$ 50.00	\$ 2,900.00
ODOT 610(U)-4610	Tactile Warning Device - New	60	SF	\$ 25.00	\$ 1,500.00
ODOT 610(U)-4615	Tactile Warning Device - Retrofit	10	SF	\$ 60.00	\$ 600.00
ODOT 619(B)-4792	Removal of Sidewalk	44	SY	\$ 12.00	\$ 528.00
---	Push Button Pole	2	EA	\$ 1,200.00	\$ 2,400.00
ODOT 857(F)-8006	Pavement Marking Removal (Traffic Stripe)	0	LF	\$ 0.25	\$ -
---	Crosswalk Pavement Markings	178	LF	\$ 6.00	\$ 1,068.00
---	Pedestrian Push Button (APS)	0	EA	\$ 1,200.00	\$ -
---	Removal of Pedestrian Push Buttons	0	EA	\$ 50.00	\$ -
---	Relocate Pedestrian Push Button	2	EA	\$ 300.00	\$ 600.00
---	12" LED Countdown Ped Signal Module with Housing	2	EA	\$ 650.00	\$ 1,300.00
---	Pedestrian Push Button Sign	8	EA	\$ 150.00	\$ 1,200.00
---	Remove Pedestrian Push Button Sign	8	EA	\$ 50.00	\$ 400.00
---	Repave Roadway	2,000	LS	\$ 5,000.00	\$ 10,000.00
---	Fix Ponding	0	LS	\$ 2,000.00	\$ -
---	Fix Curb Ramp Transition	3	LS	\$ 2,000.00	\$ 6,000.00
---	Median Nose Modification	0	LS	\$ 5,000.00	\$ -
---	Remove Temporary Obstruction	0	LS	\$ 500.00	\$ -
---	Fix Curb Ramp Counter Slope	0	LS	\$ 2,000.00	\$ -

Basis for Cost Projection	Subtotal:	\$ 27,196.00
<input checked="" type="checkbox"/> No Design Completed	Engineering: (% +/-)	15% \$ 4,201.71
<input type="checkbox"/> Preliminary Design	Contingency: (% +/-)	20% \$ 5,602.29
<input type="checkbox"/> Final Design	Estimated Project Cost:	\$ 37,000.00

Project Location



Field Observations

Intersection Issues	Crosswalk				Possible Solutions
	N	E	S	W	
Path of travel pavement condition	Dangerous	Good	Good	Dangerous	Repave roadway and install crosswalk pavement markings
Path of travel running slope is greater than 5%					
Path of travel cross slope is greater than 5%					
Crosswalk width is less than 6'					
Crosswalk striping condition	Good	Good	Good	Good	

Curb Ramp Issues	Curb Ramp ID ('Z' or 'I' in ramp label indicates no existing ramp)						Possible Solutions
	1A	1B	2A	2B	3A	4A	
Curb ramp does not exist and is needed							
Curb ramp does not land in crosswalk							
No 4' x 4' clear space at base of curb ramp							
Curb side is not 90° or has traversable adjacent surface							
Flare cross slope is greater than 10%	X	X	X	X			Remove and replace curb ramp
Curb ramp running slope is greater than 8.3%							
Blended transition running slope is greater than 5%							
Cut-thru ramp running slope is greater than 5%							
Curb ramp cross slope is greater than 2%				X			
Cut-thru ramp cross slope is greater than 5%							
Curb ramp width is less than 48"							
Cut-thru ramp width is less than 60"							
Permanent obstruction (>0.25") in curb ramp/landing/flares					X		
Temporary obstruction (>0.25") in curb ramp/landing/flares							
No textured surface at base of curb ramp	X	X	X	X	X	X	For intersection, commercial driveway, and park ramps, install color truncated domes
No color contrast at base of curb ramp	X	X	X	X	X	X	
Landing area does not exist and is needed						X	
Landing area is less than 5' x 5' or slopes greater than 2%							Install landing area
Missing or no pedestrian push buttons							Install push button pole and relocate pedestrian push buttons
Pedestrian push button is offset more than 5' from the nearest crosswalk edge							
Pedestrian push button offset more than 10' from curb face	X	X					
Pedestrian push button is not parallel to crosswalk							
Pedestrian push button height is greater than 48"							
Pedestrian push button diameter is not 2"							
Pedestrian push button sign does not exist							
Pedestrian push button sign is not MUTCD approved	X	X	X	X	X	X	Remove and replace pedestrian push button sign
Clear floor space does not exist and is needed						X	
Clear floor space for pedestrian push button is less than 30" x 48" or has a slope greater than 2%	X		X		X		Install clear floor space
Remove and replace clear floor space							
Missing or no pedestrian signal heads							
Curb ramp transition onto roadway is greater than 0.25"			X		X	X	Fix curb ramp transition
Counter slope of the gutter or street at the foot of the curb ramp is greater than 5%							
Ponding occurs at base of curb ramp							



Ramp 1A



Ramp 1B



Ramp 2A



Ramp 2B



Ramp 3A



Ramp 4A

Opinion of Probable Construction Cost Disclaimer:

The Engineer has no control over the cost of labor, materials, equipment, or over the Contractor's methods of determining prices or over competitive bidding or market conditions. Opinions of probable costs provided herein are based on the information known to Engineer at this time and represent only the Engineer's judgment as a design professional familiar with the construction industry. The Engineer cannot and does not guarantee that proposals, bids, or actual construction costs will not vary from its opinions of probable costs.

Project Location Map Sources:

Esri, DeLorme, NAVTEQ, USGS, Intermap, iPC, NRCAN, Esri Japan, METI, Esri China (Hong Kong), Esri (Thailand), TomTom, 2013, DigitalGlobe, GeoEye, i-cubed, USDA, AEX, Getmapping, Aerogrip, IGN, IGP, swisstopo, and the GIS User Community

Client: City of Norman Date: 4/30/18
 Program: ADA Self-Evaluation and Transition Plan Prepared By: CMP
 KHA No.: 061298800 Checked By: EPE

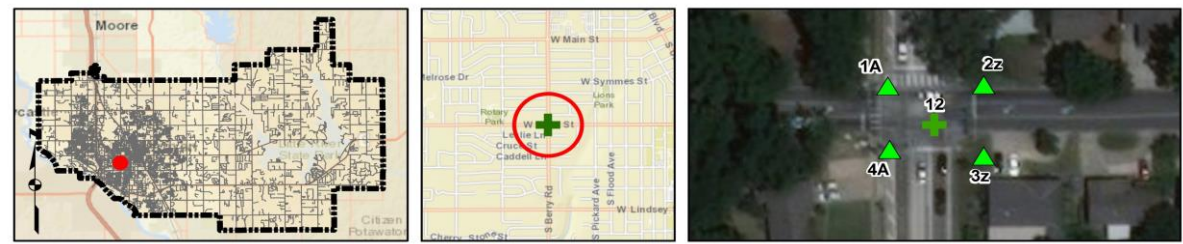
Corridor : GPS ID: 12
 Project Name: Intersection of W Boyd St and S Berry Rd
 City: Norman

Item No.	Item Description	Quantity	Unit	Unit Price	Item Cost
ODOT 202(A)-0183	Unclassified Excavation	0	CY	\$ 5.50	\$ -
ODOT 609(A)-0300	Concrete Curb (6" Barrier-Integral)	0	LF	\$ 7.00	\$ -
ODOT 610(A)-0602	4" Concrete Sidewalk	41	SY	\$ 50.00	\$ 2,050.00
ODOT 610(U)-4610	Tactile Warning Device - New	40	SF	\$ 25.00	\$ 1,000.00
ODOT 610(U)-4615	Tactile Warning Device - Retrofit	0	SF	\$ 60.00	\$ -
ODOT 619(B)-4792	Removal of Sidewalk	26	SY	\$ 12.00	\$ 312.00
---	Push Button Pole	1	EA	\$ 1,200.00	\$ 1,200.00
ODOT 857(F)-8006	Pavement Marking Removal (Traffic Stripe)	0	LF	\$ 0.25	\$ -
---	Crosswalk Pavement Markings	194	LF	\$ 6.00	\$ 1,164.00
---	Pedestrian Push Button (APS)	0	EA	\$ 1,200.00	\$ -
---	Removal of Pedestrian Push Buttons	0	EA	\$ 50.00	\$ -
---	Relocate Pedestrian Push Button	3	EA	\$ 300.00	\$ 900.00
---	12" LED Countdown Ped Signal Module with Housing	0	EA	\$ 850.00	\$ -
---	Pedestrian Push Button Sign	4	EA	\$ 150.00	\$ 600.00
---	Remove Pedestrian Push Button Sign	4	EA	\$ 50.00	\$ 200.00
---	Repave Roadway	2	LS	\$ 5,000.00	\$ 10,000.00
---	Fix Ponding	2	LS	\$ 2,000.00	\$ 4,000.00
---	Fix Curb Ramp Transition	2	LS	\$ 2,000.00	\$ 4,000.00
---	Median Nose Modification	0	LS	\$ 5,000.00	\$ -
---	Remove Temporary Obstruction	0	LS	\$ 500.00	\$ -
---	Fix Curb Ramp Counter Slope	0	LS	\$ 2,000.00	\$ -

Basis for Cost Projection

<input checked="" type="checkbox"/> No Design Completed	Subtotal:	\$ 21,426.00
<input type="checkbox"/> Preliminary Design	Engineering: (% +/-)	15% \$ 3,246.00
<input type="checkbox"/> Final Design	Contingency: (% +/-)	20% \$ 4,328.00
	Estimated Project Cost:	\$ 29,000.00

Project Location



Field Observations

Intersection Issues	Crosswalk				Possible Solutions
	N	E	S	W	
Path of travel pavement condition	Poor	N/A	N/A	Dangerous	Repave roadway and install crosswalk pavement markings
Path of travel running slope is greater than 5%		N/A	N/A		
Path of travel cross slope is greater than 5%		N/A	N/A		
Crosswalk width is less than 6'		N/A	N/A		Install crosswalk pavement markings
Crosswalk striping condition	Good	N/A	N/A	Worn	

Curb Ramp Issues	Curb Ramp ID ('z' or 'l' in ramp label indicates no existing ramp)				Possible Solutions
	1A	2z	3z	4A	
Curb ramp does not exist and is needed		X			Install curb ramp; if median improvement, see shapefile
Curb ramp does not land in crosswalk					
No 4' x 4' clear space at base of curb ramp					
Curb side is not 90° or has traversable adjacent surface					
Flare cross slope is greater than 10%					
Curb ramp running slope is greater than 8.3%	X			X	Remove and replace curb ramp
Blended transition running slope is greater than 5%					
Cut-thru ramp running slope is greater than 5%					
Curb ramp cross slope is greater than 2%	X			X	
Cut-thru ramp cross slope is greater than 5%					
Curb ramp width is less than 48"					
Cut-thru ramp width is less than 60"					
Permanent obstruction (>0.25") in curb ramp/landing/flares	X				For intersection, commercial driveway, and park ramps, install color truncated domes
Temporary obstruction (>0.25") in curb ramp/landing/flares					
No textured surface at base of curb ramp	X			X	Remove and replace landing area
No color contrast at base of curb ramp	X			X	
Landing area does not exist and is needed					Install push button pole and relocate pedestrian push buttons
Landing area is less than 5' x 5' or slopes greater than 2%	X			X	
Missing or no pedestrian push buttons					Relocate pedestrian push buttons
Pedestrian push button is offset more than 5' from the nearest crosswalk edge		X			
Pedestrian push button offset more than 10' from curb face					Remove and replace pedestrian push button sign
Pedestrian push button is not parallel to crosswalk					
Pedestrian push button height is greater than 48"	X				Install clear floor space
Pedestrian push button diameter is not 2"					
Pedestrian push button sign does not exist					Fix curb ramp transition
Pedestrian push button sign is not MUTCD approved	X	X		X	
Clear floor space does not exist and is needed	X	X			
Clear floor space for pedestrian push button is less than 30" x 48" or has a slope greater than 2%					
Missing or no pedestrian signal heads					
Curb ramp transition onto roadway is greater than 0.25"	X			X	
Counter slope of the gutter or street at the foot of the curb ramp is greater than 5%					
Ponding occurs at base of curb ramp					



Ramp 1A



Corner 2 No Ramp (2z)



Corner 3 No Ramp (3z)



Ramp 4A

Opinion of Probable Construction Cost Disclaimer:

The Engineer has no control over the cost of labor, materials, equipment, or over the Contractor's methods of determining prices or over competitive bidding or market conditions. Opinions of probable costs provided herein are based on the information known to Engineer at this time and represent only the Engineer's judgment as a design professional familiar with the construction industry. The Engineer cannot and does not guarantee that proposals, bids, or actual construction costs will not vary from its opinions of probable costs.

Project Location Map Sources:

Esri, DeLorme, NAVTEQ, USGS, Intermap, iPC, NRCAN, Esri Japan, METI, Esri China (Hong Kong), Esri (Thailand), TomTom, 2013, DigitalGlobe, GeoEye, i-cubed, USDA, AEX, Getmapping, Aerogrip, IGN, IGP, swisstopo, and the GIS User Community

Client: City of Norman Date: 4/30/18
 Program: ADA Self-Evaluation and Transition Plan Prepared By: CMP
 KHA No.: 061298800 Checked By: EPE

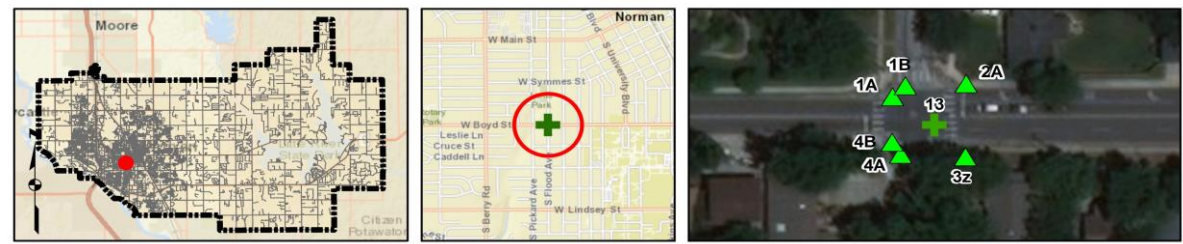
Corridor : GPS ID: 13
 Project Name: Intersection of W Boyd St and S Flood Ave
 City: Norman

Item No.	Item Description	Quantity	Unit	Unit Price	Item Cost
ODOT 202(A)-0183	Unclassified Excavation	0	CY	\$ 5.50	\$ -
ODOT 609(A)-0300	Concrete Curb (6" Barrier-Integral)	0	LF	\$ 7.00	\$ -
ODOT 610(A)-0602	4" Concrete Sidewalk	75	SY	\$ 50.00	\$ 3,750.00
ODOT 610(U)-4610	Tactile Warning Device - New	80	SF	\$ 25.00	\$ 2,000.00
ODOT 610(U)-4615	Tactile Warning Device - Retrofit	0	SF	\$ 60.00	\$ -
ODOT 619(B)-4792	Removal of Sidewalk	52	SY	\$ 12.00	\$ 624.00
---	Push Button Pole	0	EA	\$ 1,200.00	\$ -
ODOT 857(F)-8006	Pavement Marking Removal (Traffic Stripe)	0	LF	\$ 0.25	\$ -
---	Crosswalk Pavement Markings	186	LF	\$ 6.00	\$ 1,116.00
---	Pedestrian Push Button (APS)	0	EA	\$ 1,200.00	\$ -
---	Removal of Pedestrian Push Buttons	0	EA	\$ 50.00	\$ -
---	Relocate Pedestrian Push Button	0	EA	\$ 300.00	\$ -
---	12" LED Countdown Ped Signal Module with Housing	0	EA	\$ 650.00	\$ -
---	Pedestrian Push Button Sign	0	EA	\$ 150.00	\$ -
---	Remove Pedestrian Push Button Sign	0	EA	\$ 50.00	\$ -
---	Repave Roadway	2	LS	\$ 5,000.00	\$ 10,000.00
---	Fix Ponding	0	LS	\$ 2,000.00	\$ -
---	Fix Curb Ramp Transition	3	LS	\$ 2,000.00	\$ 6,000.00
---	Median Nose Modification	0	LS	\$ 5,000.00	\$ -
---	Remove Temporary Obstruction	0	LS	\$ 500.00	\$ -
---	Fix Curb Ramp Counter Slope	0	LS	\$ 2,000.00	\$ -

Basis for Cost Projection

<input checked="" type="checkbox"/> No Design Completed	Subtotal:	\$ 23,490.00
<input type="checkbox"/> Preliminary Design	Engineering: (% +/-)	15% \$ 3,647.14
<input type="checkbox"/> Final Design	Contingency: (% +/-)	20% \$ 4,862.86
	Estimated Project Cost:	\$ 32,000.00

Project Location



Field Observations

Intersection Issues	Crosswalk				Possible Solutions
	N	E	S	W	
Path of travel pavement condition	Good	Dangerous	Dangerous	Good	Repave roadway and install crosswalk pavement markings
Path of travel running slope is greater than 5%					
Path of travel cross slope is greater than 5%					
Crosswalk width is less than 6'					
Crosswalk striping condition	Good	Good	Good	Good	

Curb Ramp Issues	Curb Ramp ID ('z' or 'l' in ramp label indicates no existing ramp)					Possible Solutions
	1A	1B	2A	3z	4A	
Curb ramp does not exist and is needed				X		Install curb ramp; if median improvement, see shapefile
Curb ramp does not land in crosswalk						
No 4' x 4' clear space at base of curb ramp						
Curbed side is not 90° or has traversable adjacent surface	X	X	X		X	
Flare cross slope is greater than 10%			X		X	
Curb ramp running slope is greater than 8.3%			X			
Blended transition running slope is greater than 5%						
Cut-thru ramp running slope is greater than 5%						
Curb ramp cross slope is greater than 2%			X			
Cut-thru ramp cross slope is greater than 5%						
Curb ramp width is less than 48"						
Cut-thru ramp width is less than 60"						
Permanent obstruction (>0.25") in curb ramp/landing/flares			X			
Temporary obstruction (>0.25") in curb ramp/landing/flares						
No textured surface at base of curb ramp			X			
No color contrast at base of curb ramp			X			
Landing area does not exist and is needed			X			
Landing area is less than 5' x 5' or slopes greater than 2%	X	X			X	
Missing or no pedestrian push buttons						
Pedestrian push button is offset more than 5' from the nearest crosswalk edge						
Pedestrian push button offset more than 10' from curb face						
Pedestrian push button is not parallel to crosswalk						
Pedestrian push button height is greater than 48"						
Pedestrian push button diameter is not 2"						
Pedestrian push button sign does not exist						
Pedestrian push button sign is not MUTCD approved						
Clear floor space does not exist and is needed			X	X		
Clear floor space for pedestrian push button is less than 30" x 48" or has a slope greater than 2%	X	X	X		X	
Missing or no pedestrian signal heads						
Curb ramp transition onto roadway is greater than 0.25"			X		X	
Counter slope of the gutter or street at the foot of the curb ramp is greater than 5%						
Ponding occurs at base of curb ramp						



Ramp 1A



Ramp 1B



Ramp 2A



Corner 3 No Ramp (3z)



Ramp 4A



Ramp 4B

Opinion of Probable Construction Cost Disclaimer:

The Engineer has no control over the cost of labor, materials, equipment, or over the Contractor's methods of determining prices or over competitive bidding or market conditions. Opinions of probable costs provided herein are based on the information known to Engineer at this time and represent only the Engineer's judgment as a design professional familiar with the construction industry. The Engineer cannot and does not guarantee that proposals, bids, or actual construction costs will not vary from its opinions of probable costs.

Project Location Map Sources:

Esri, DeLorme, NAVTEQ, USGS, Intermap, iPC, NRCAN, Esri Japan, METI, Esri China (Hong Kong), Esri (Thailand), TomTom, 2013, DigitalGlobe, GeoEye, i-cubed, USDA, AEX, Getmapping, Aerogrip, IGN, IGP, swisstopo, and the GIS User Community

Client: City of Norman Date: 4/30/18
 Program: ADA Self-Evaluation and Transition Plan Prepared By: CMP
 KHA No.: 061298800 Checked By: EPE

Corridor : GPS ID: 14
 Project Name: Intersection of W Boyd St and Chautauqua Ave
 City: Norman

Item No.	Item Description	Quantity	Unit	Unit Price	Item Cost
ODOT 202(A)-0183	Unclassified Excavation	0	CY	\$ 5.50	\$ -
ODOT 609(A)-0300	Concrete Curb (6" Barrier-Integral)	0	LF	\$ 7.00	\$ -
ODOT 610(A)-0602	4" Concrete Sidewalk	86	SY	\$ 50.00	\$ 4,300.00
ODOT 610(U)-4610	Tactile Warning Device - New	80	SF	\$ 25.00	\$ 2,000.00
ODOT 610(U)-4615	Tactile Warning Device - Retrofit	0	SF	\$ 60.00	\$ -
ODOT 619(B)-4792	Removal of Sidewalk	60	SY	\$ 12.00	\$ 720.00
---	Push Button Pole	5	EA	\$ 1,200.00	\$ 6,000.00
---	---	0	---	---	---
ODOT 857(F)-8006	Pavement Marking Removal (Traffic Stripe)	0	LF	\$ 0.25	\$ -
---	Crosswalk Pavement Markings	234	LF	\$ 6.00	\$ 1,404.00
---	---	0	---	---	---
---	Pedestrian Push Button (APS)	0	EA	\$ 1,200.00	\$ -
---	---	0	EA	\$ 50.00	\$ -
---	Removal of Pedestrian Push Buttons	0	EA	\$ 300.00	\$ -
---	Relocate Pedestrian Push Button	7	EA	\$ 300.00	\$ 2,100.00
---	---	0	EA	\$ 850.00	\$ -
---	12" LED Countdown Ped Signal Module with Housing	0	EA	\$ 150.00	\$ -
---	---	8	EA	\$ 150.00	\$ 1,200.00
---	Remove Pedestrian Push Button Sign	8	EA	\$ 50.00	\$ 400.00
---	---	3	LS	\$ 5,000.00	\$ 15,000.00
---	Repave Roadway	0	LS	\$ 2,000.00	\$ -
---	---	0	LS	\$ 2,000.00	\$ -
---	Fix Ponding	0	LS	\$ 2,000.00	\$ -
---	---	4	LS	\$ 2,000.00	\$ 8,000.00
---	Fix Curb Ramp Transition	0	LS	\$ 5,000.00	\$ -
---	---	0	LS	\$ 500.00	\$ -
---	Median Nose Modification	0	LS	\$ 500.00	\$ -
---	Remove Temporary Obstruction	0	LS	\$ 2,000.00	\$ -
---	---	0	LS	\$ 2,000.00	\$ -
---	Fix Curb Ramp Counter Slope	0	LS	\$ 2,000.00	\$ -

Basis for Cost Projection

<input checked="" type="checkbox"/> No Design Completed	Subtotal:	\$ 41,124.00
<input type="checkbox"/> Preliminary Design	Engineering: (% +/-)	15% \$ 6,375.43
<input type="checkbox"/> Final Design	Contingency: (% +/-)	20% \$ 8,500.57
	Estimated Project Cost:	\$ 56,000.00

Project Location



Field Observations

Intersection Issues	Crosswalk				Possible Solutions
	N	E	S	W	
Path of travel pavement condition	Dangerous	Poor	Dangerous	Good	Repave roadway and install crosswalk pavement markings
Path of travel running slope is greater than 5%					
Path of travel cross slope is greater than 5%					
Crosswalk width is less than 6'					
Crosswalk striping condition	Worn	Good	Good	Good	Remove and replace crosswalk pavement markings

Curb Ramp Issues	Curb Ramp ID ('z' or 'l' in ramp label indicates no existing ramp)					Possible Solutions
	1A	2A	3A	3B	4z	
Curb ramp does not exist and is needed					X	Install curb ramp; if median improvement, see shapefile
Curb ramp does not land in crosswalk						
No 4' x 4' clear space at base of curb ramp						
Curb side is not 90° or has traversable adjacent surface	X	X	X			
Flare cross slope is greater than 10%						
Curb ramp running slope is greater than 8.3%		X			X	
Blended transition running slope is greater than 5%						
Cut-thru ramp running slope is greater than 5%						
Curb ramp cross slope is greater than 2%	X	X				Remove and replace curb ramp
Cut-thru ramp cross slope is greater than 5%						
Curb ramp width is less than 48"	X					
Cut-thru ramp width is less than 60"						
Permanent obstruction (>0.25") in curb ramp/landing/flares						
Temporary obstruction (>0.25") in curb ramp/landing/flares						
No textured surface at base of curb ramp	X	X	X	X		For intersection, commercial driveway, and park ramps, install color truncated domes
No color contrast at base of curb ramp	X	X	X	X		
Landing area does not exist and is needed						
Landing area is less than 5' x 5' or slopes greater than 2%	X	X	X	X		Remove and replace landing area
Missing or no pedestrian push buttons						
Pedestrian push button is offset more than 5' from the nearest crosswalk edge	X	X		X	X	Install push button pole and relocate pedestrian push buttons
Pedestrian push button offset more than 10' from curb face	X	X	X	X		
Pedestrian push button is not parallel to crosswalk						
Pedestrian push button height is greater than 48"						
Pedestrian push button diameter is not 2"						
Pedestrian push button sign does not exist						
Pedestrian push button sign is not MUTCD approved	X	X	X	X	X	Remove and replace pedestrian push button sign
Clear floor space does not exist and is needed					X	Install clear floor space
Clear floor space for pedestrian push button is less than 30" x 48" or has a slope greater than 2%	X	X				Remove and replace clear floor space
Missing or no pedestrian signal heads						
Curb ramp transition onto roadway is greater than 0.25"	X	X	X	X		Fix curb ramp transition
Counter slope of the gutter or street at the foot of the curb ramp is greater than 5%						
Ponding occurs at base of curb ramp						



Ramp 1A



Ramp 2A



Ramp 3A



Ramp 3B



Corner 4 No Ramp (4z)

Opinion of Probable Construction Cost Disclaimer:

The Engineer has no control over the cost of labor, materials, equipment, or over the Contractor's methods of determining prices or over competitive bidding or market conditions. Opinions of probable costs provided herein are based on the information known to Engineer at this time and represent only the Engineer's judgment as a design professional familiar with the construction industry. The Engineer cannot and does not guarantee that proposals, bids, or actual construction costs will not vary from its opinions of probable costs.

Project Location Map Sources:

Esri, DeLorme, NAVTEQ, USGS, Intermap, iPC, NRCAN, Esri Japan, METI, Esri China (Hong Kong), Esri (Thailand), TomTom, 2013, DigitalGlobe, GeoEye, i-cubed, USDA, AEX, Getmapping, Aerogrip, IGN, IGP, swisstopo, and the GIS User Community

Client: City of Norman Date: 4/30/18
 Program: ADA Self-Evaluation and Transition Plan Prepared By: CMP
 KHA No.: 061298800 Checked By: EPE

Corridor: E Lindsey St GPS ID: 15
 Project Name: Intersection of E Lindsey St and Biloxi Dr
 City: Norman

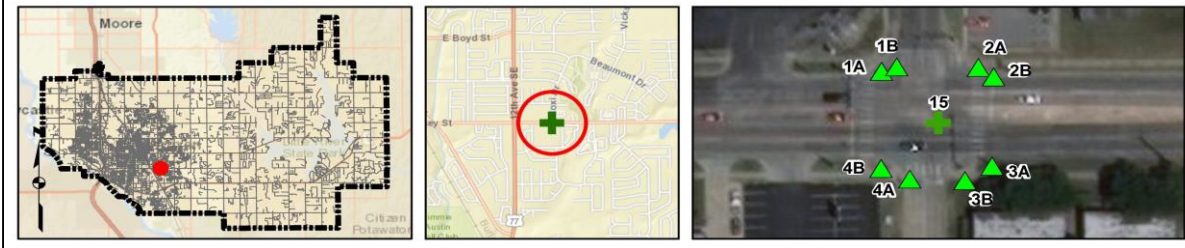
Item No.	Item Description	Quantity	Unit	Unit Price	Item Cost
ODOT 202(A)-0183	Unclassified Excavation	0	CY	\$ 5.50	\$ -
ODOT 609(A)-0300	Concrete Curb (6" Barrier-Integral)	0	LF	\$ 7.00	\$ -
ODOT 610(A)-0602	4" Concrete Sidewalk	95	SY	\$ 50.00	\$ 4,750.00
ODOT 610(U)-4610	Tactile Warning Device - New	80	SF	\$ 25.00	\$ 2,000.00
ODOT 610(U)-4615	Tactile Warning Device - Retrofit	0	SF	\$ 60.00	\$ -
ODOT 619(B)-4792	Removal of Sidewalk	87	SY	\$ 12.00	\$ 1,044.00
---	Push Button Pole	5	EA	\$ 1,200.00	\$ 6,000.00
ODOT 857(F)-8006	Pavement Marking Removal (Traffic Stripe)	72	LF	\$ 0.25	\$ 18.00
---	Crosswalk Pavement Markings	191	LF	\$ 6.00	\$ 1,146.00
---	Pedestrian Push Button (APS)	0	EA	\$ 1,200.00	\$ -
---	Removal of Pedestrian Push Buttons	0	EA	\$ 50.00	\$ -
---	Relocate Pedestrian Push Button	5	EA	\$ 300.00	\$ 1,500.00
---	12" LED Countdown Ped Signal Module with Housing	0	EA	\$ 650.00	\$ -
---	Pedestrian Push Button Sign	1	EA	\$ 150.00	\$ 150.00
---	Remove Pedestrian Push Button Sign	1	EA	\$ 50.00	\$ 50.00
---	Repave Roadway	0	LS	\$ 5,000.00	\$ 5,000.00
---	Fix Ponding	0	LS	\$ 2,000.00	\$ -
---	Fix Curb Ramp Transition	5	LS	\$ 2,000.00	\$ 10,000.00
---	Median Nose Modification	0	LS	\$ 5,000.00	\$ -
---	Remove Temporary Obstruction	0	LS	\$ 500.00	\$ -
---	Fix Curb Ramp Counter Slope	1	LS	\$ 2,000.00	\$ 2,000.00

Basis for Cost Projection

- No Design Completed
- Preliminary Design
- Final Design

Subtotal:	\$	33,658.00
Engineering: (% +/-)	15%	\$ 5,289.43
Contingency: (% +/-)	20%	\$ 7,052.57
Estimated Project Cost:	\$	46,000.00

Project Location



Field Observations

Intersection Issues	Crosswalk				Possible Solutions
	N	E	S	W	
Path of travel pavement condition	Dangerous	Good	Good	Good	Repave roadway and install crosswalk pavement markings
Path of travel running slope is greater than 5%					
Path of travel cross slope is greater than 5%					
Crosswalk width is less than 6'					
Crosswalk striping condition	Good	Good	Good	Good	

Curb Ramp Issues	Curb Ramp ID ('z' or 'i' in ramp label indicates no existing ramp)								Possible Solutions
	1A	1B	2A	2B	3A	3B	4A	4B	
Curb ramp does not exist and is needed									Remove and replace crosswalk pavement markings
Curb ramp does not land in crosswalk								X	
No 4' x 4' clear space at base of curb ramp								X	Remove and replace curb ramp
Curbed side is not 90° or has traversable adjacent surface	X	X	X	X	X	X	X	X	
Flare cross slope is greater than 10%									
Curb ramp running slope is greater than 8.3%					X	X	X	X	
Blended transition running slope is greater than 5%									
Cut-thru ramp running slope is greater than 5%						X	X	X	
Curb ramp cross slope is greater than 2%						X	X	X	
Cut-thru ramp cross slope is greater than 5%									
Curb ramp width is less than 48"								X	
Cut-thru ramp width is less than 60"									
Permanent obstruction (>0.25") in curb ramp/landing/flares			X	X	X				For intersection, commercial driveway, and park ramps, install color truncated domes
Temporary obstruction (>0.25") in curb ramp/landing/flares			X	X	X				
No textured surface at base of curb ramp	X	X	X	X	X	X	X	X	
No color contrast at base of curb ramp	X	X	X	X	X	X	X	X	
Landing area does not exist and is needed			X	X					
Landing area is less than 5' x 5' or slopes greater than 2%		X				X			
Missing or no pedestrian push buttons									
Pedestrian push button is offset more than 5' from the nearest crosswalk edge			X	X	X		X	X	
Pedestrian push button offset more than 10' from curb face									
Pedestrian push button is not parallel to crosswalk									
Pedestrian push button height is greater than 48"									
Pedestrian push button diameter is not 2"									
Pedestrian push button sign does not exist									
Pedestrian push button sign is not MUTCD approved	X								
Clear floor space does not exist and is needed	X	X			X	X			
Clear floor space for pedestrian push button is less than 30" x 48" or has a slope greater than 2%			X	X					
Missing or no pedestrian signal heads									
Curb ramp transition onto roadway is greater than 0.25"	X	X		X		X		X	
Counter slope of the gutter or street at the foot of the curb ramp is greater than 5%								X	
Ponding occurs at base of curb ramp									



Ramp 1A



Ramp 1B



Ramp 2A



Ramp 2B



Ramp 3A



Ramp 3B



Ramp 4A



Ramp 4B

Opinion of Probable Construction Cost Disclaimer:

The Engineer has no control over the cost of labor, materials, equipment, or over the Contractor's methods of determining prices or over competitive bidding or market conditions. Opinions of probable costs provided herein are based on the information known to Engineer at this time and represent only the Engineer's judgment as a design professional familiar with the construction industry. The Engineer cannot and does not guarantee that proposals, bids, or actual construction costs will not vary from its opinions of probable costs.

Project Location Map Sources:

Esri, DeLorme, NAVTEQ, USGS, Intermap, iPC, NRCAN, Esri Japan, METI, Esri China (Hong Kong), Esri (Thailand), TomTom, 2013, DigitalGlobe, GeoEye, i-cubed, USDA, AEX, Getmapping, Aerogrip, IGN, IGP, swisstopo, and the GIS User Community

Client: City of Norman Date: 4/30/18
 Program: ADA Self-Evaluation and Transition Plan Prepared By: CMP
 KHA No.: 061298800 Checked By: EPE

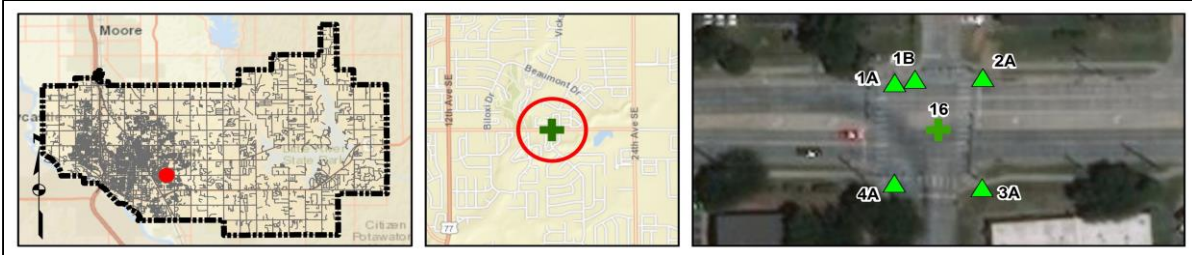
Corridor: E Lindsey St GPS ID: 16
 Project Name: Intersection of E Lindsey St and Oakhurst Ave
 City: Norman

Item No.	Item Description	Quantity	Unit	Unit Price	Item Cost
ODOT 202(A)-0183	Unclassified Excavation	0	CY	\$ 5.50	\$ -
ODOT 609(A)-0300	Concrete Curb (6" Barrier-Integral)	0	LF	\$ 7.00	\$ -
ODOT 610(A)-0602	4" Concrete Sidewalk	68	SY	\$ 50.00	\$ 3,400.00
ODOT 610(U)-4610	Tactile Warning Device - New	80	SF	\$ 25.00	\$ 2,000.00
ODOT 610(U)-4615	Tactile Warning Device - Retrofit	0	SF	\$ 60.00	\$ -
ODOT 619(B)-4792	Removal of Sidewalk	52	SY	\$ 12.00	\$ 624.00
---	Push Button Pole	1	EA	\$ 1,200.00	\$ 1,200.00
ODOT 857(F)-8006	Pavement Marking Removal (Traffic Stripe)	0	LF	\$ 0.25	\$ -
---	Crosswalk Pavement Markings	262	LF	\$ 6.00	\$ 1,572.00
---	Pedestrian Push Button (APS)	0	EA	\$ 1,200.00	\$ -
---	Removal of Pedestrian Push Buttons	0	EA	\$ 50.00	\$ -
---	Relocate Pedestrian Push Button	1	EA	\$ 300.00	\$ 300.00
---	12" LED Countdown Ped Signal Module with Housing	0	EA	\$ 650.00	\$ -
---	Pedestrian Push Button Sign	8	EA	\$ 150.00	\$ 1,200.00
---	Remove Pedestrian Push Button Sign	8	EA	\$ 50.00	\$ 400.00
---	Repave Roadway	0	LS	\$ 5,000.00	\$ -
---	Fix Ponding	0	LS	\$ 2,000.00	\$ -
---	Fix Curb Ramp Transition	4	LS	\$ 2,000.00	\$ 8,000.00
---	Median Nose Modification	0	LS	\$ 5,000.00	\$ -
---	Remove Temporary Obstruction	0	LS	\$ 500.00	\$ -
---	Fix Curb Ramp Counter Slope	0	LS	\$ 2,000.00	\$ -

Basis for Cost Projection

<input checked="" type="checkbox"/> No Design Completed	Subtotal:	\$ 18,696.00
<input type="checkbox"/> Preliminary Design	Engineering: (% +/-)	15% \$ 3,130.29
<input type="checkbox"/> Final Design	Contingency: (% +/-)	20% \$ 4,173.71
	Estimated Project Cost:	\$ 26,000.00

Project Location



Field Observations

Intersection Issues	Crosswalk				Possible Solutions
	N	E	S	W	
Path of travel pavement condition	Good	Good	Good	Good	
Path of travel running slope is greater than 5%					
Path of travel cross slope is greater than 5%					
Crosswalk width is less than 6'					
Crosswalk striping condition	Worn	Worn	Good	Good	Remove and replace crosswalk pavement markings

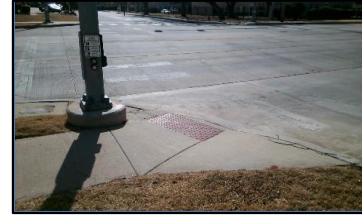
Curb Ramp Issues	Curb Ramp ID ('2' or '1' in ramp label indicates no existing ramp)					Possible Solutions
	1A	1B	2A	3A	4A	
Curb ramp does not exist and is needed						
Curb ramp does not land in crosswalk						
No 4' x 4' clear space at base of curb ramp						
Curb side is not 90° or has traversable adjacent surface						
Flare cross slope is greater than 10%		X	X	X		
Curb ramp running slope is greater than 8.3%	X		X			
Blended transition running slope is greater than 5%						
Cut-thru ramp running slope is greater than 5%						
Curb ramp cross slope is greater than 2%				X		Remove and replace curb ramp
Cut-thru ramp cross slope is greater than 5%						
Curb ramp width is less than 48"						
Cut-thru ramp width is less than 60"						
Permanent obstruction (>0.25") in curb ramp/landing/flares			X	X		
Temporary obstruction (>0.25") in curb ramp/landing/flares						
No textured surface at base of curb ramp						
No color contrast at base of curb ramp						
Landing area does not exist and is needed						
Landing area is less than 5' x 5' or slopes greater than 2%			X	X		Remove and replace landing area
Missing or no pedestrian push buttons						
Pedestrian push button is offset more than 5' from the nearest crosswalk edge						Install push button pole and relocate pedestrian push buttons
Pedestrian push button offset more than 10' from curb face		X				
Pedestrian push button is not parallel to crosswalk						
Pedestrian push button height is greater than 48"						
Pedestrian push button diameter is not 2"						
Pedestrian push button sign does not exist						
Pedestrian push button sign is not MUTCD approved	X	X	X	X	X	Remove and replace pedestrian push button sign
Clear floor space does not exist and is needed						
Clear floor space for pedestrian push button is less than 30" x 48" or has a slope greater than 2%	X	X	X	X	X	Remove and replace clear floor space
Missing or no pedestrian signal heads						
Curb ramp transition onto roadway is greater than 0.25"	X		X	X	X	Fix curb ramp transition
Counter slope of the gutter or street at the foot of the curb ramp is greater than 5%						
Ponding occurs at base of curb ramp						



Ramp 1A



Ramp 1B



Ramp 2A



Ramp 3A



Ramp 4A

Opinion of Probable Construction Cost Disclaimer:

The Engineer has no control over the cost of labor, materials, equipment, or over the Contractor's methods of determining prices or over competitive bidding or market conditions. Opinions of probable costs provided herein are based on the information known to Engineer at this time and represent only the Engineer's judgment as a design professional familiar with the construction industry. The Engineer cannot and does not guarantee that proposals, bids, or actual construction costs will not vary from its opinions of probable costs.

Project Location Map Sources:

Esri, DeLorme, NAVTEQ, USGS, Intermap, iPC, NRCAN, Esri Japan, METI, Esri China (Hong Kong), Esri (Thailand), TomTom, 2013, DigitalGlobe, GeoEye, i-cubed, USDA, AEX, Getmapping, Aerogrip, IGN, IGP, swisstopo, and the GIS User Community

Client: City of Norman Date: 4/30/18
 Program: ADA Self-Evaluation and Transition Plan Prepared By: CMP
 KHA No.: 061298800 Checked By: EPE

Corridor: E Lindsey St GPS ID: 17
 Project Name: Intersection of E Lindsey St and 24th Ave SE
 City: Norman

Item No.	Item Description	Quantity	Unit	Unit Price	Item Cost
ODOT 202(A)-0183	Unclassified Excavation	0	CY	\$ 5.50	\$ -
ODOT 609(A)-0300	Concrete Curb (6" Barrier-Integral)	0	LF	\$ 7.00	\$ -
ODOT 610(A)-0602	4" Concrete Sidewalk	79	SY	\$ 50.00	\$ 3,950.00
ODOT 610(U)-4610	Tactile Warning Device - New	80	SF	\$ 25.00	\$ 2,000.00
ODOT 610(U)-4615	Tactile Warning Device - Retrofit	0	SF	\$ 60.00	\$ -
ODOT 619(B)-4792	Removal of Sidewalk	58	SY	\$ 12.00	\$ 696.00
---	Push Button Pole	4	EA	\$ 1,200.00	\$ 4,800.00
ODOT 857(F)-8006	Pavement Marking Removal (Traffic Stripe)	0	LF	\$ 0.25	\$ -
---	Crosswalk Pavement Markings	0	LF	\$ 6.00	\$ -
---	Pedestrian Push Button (APS)	0	EA	\$ 1,200.00	\$ -
---	Removal of Pedestrian Push Buttons	0	EA	\$ 50.00	\$ -
---	Relocate Pedestrian Push Button	7	EA	\$ 300.00	\$ 2,100.00
---	12" LED Countdown Ped Signal Module with Housing	0	EA	\$ 650.00	\$ -
---	Pedestrian Push Button Sign	8	EA	\$ 150.00	\$ 1,200.00
---	Remove Pedestrian Push Button Sign	0	EA	\$ 50.00	\$ 400.00
---	Repave Roadway	1	LS	\$ 2,000.00	\$ 2,000.00
---	Fix Ponding	1	LS	\$ 2,000.00	\$ 2,000.00
---	Fix Curb Ramp Transition	3	LS	\$ 2,000.00	\$ 6,000.00
---	Median Nose Modification	0	LS	\$ 5,000.00	\$ -
---	Remove Temporary Obstruction	2	LS	\$ 500.00	\$ 1,000.00
---	Fix Curb Ramp Counter Slope	1	LS	\$ 2,000.00	\$ 2,000.00

Basis for Cost Projection

<input checked="" type="checkbox"/> No Design Completed	Subtotal:	\$ 26,146.00
<input type="checkbox"/> Preliminary Design	Engineering: (% +/-)	15% \$ 4,223.14
<input type="checkbox"/> Final Design	Contingency: (% +/-)	20% \$ 5,630.86
	Estimated Project Cost:	\$ 36,000.00

Project Location



Field Observations

Intersection Issues	Crosswalk				Possible Solutions
	N	E	S	W	
Path of travel pavement condition	Good	Good	Good	Good	
Path of travel running slope is greater than 5%					
Path of travel cross slope is greater than 5%					
Crosswalk width is less than 6'					
Crosswalk striping condition	Good	Good	Good	Good	

Curb Ramp Issues	Curb Ramp ID ('z' or 'l' in ramp label indicates no existing ramp)				Possible Solutions
	1A	2A	3A	4A	
Curb ramp does not exist and is needed					
Curb ramp does not land in crosswalk					
No 4' x 4' clear space at base of curb ramp					
Curb side is not 90° or has traversable adjacent surface					
Flare cross slope is greater than 10%		X	X		
Curb ramp running slope is greater than 8.3%					
Blended transition running slope is greater than 5%					
Cut-thru ramp running slope is greater than 5%					
Curb ramp cross slope is greater than 2%					
Cut-thru ramp cross slope is greater than 5%					
Curb ramp width is less than 48"					
Cut-thru ramp width is less than 60"					
Permanent obstruction (>0.25") in curb ramp/landing/flares	X		X	X	
Temporary obstruction (>0.25") in curb ramp/landing/flares	X		X		Remove temporary obstruction
No textured surface at base of curb ramp					
No color contrast at base of curb ramp					
Landing area does not exist and is needed					
Landing area is less than 5' x 5' or slopes greater than 2%	X	X	X	X	Remove and replace landing area
Missing or no pedestrian push buttons					
Pedestrian push button is offset more than 5' from the nearest crosswalk edge	X	X	X	X	Install push button pole and relocate pedestrian push buttons
Pedestrian push button offset more than 10' from curb face		X	X	X	
Pedestrian push button is not parallel to crosswalk					
Pedestrian push button height is greater than 48"					
Pedestrian push button diameter is not 2"					
Pedestrian push button sign does not exist					
Pedestrian push button sign is not MUTCD approved	X	X	X	X	Remove and replace pedestrian push button sign
Clear floor space does not exist and is needed		X			Install clear floor space
Clear floor space for pedestrian push button is less than 30" x 48" or has a slope greater than 2%	X		X	X	Remove and replace clear floor space
Missing or no pedestrian signal heads					
Curb ramp transition onto roadway is greater than 0.25"		X	X	X	Fix curb ramp transition
Counter slope of the gutter or street at the foot of the curb ramp is greater than 5%		X			Fix curb ramp counter slope
Ponding occurs at base of curb ramp			X		Fix ponding



Ramp 1A



Ramp 2A



Ramp 3A



Ramp 4A

Opinion of Probable Construction Cost Disclaimer:

The Engineer has no control over the cost of labor, materials, equipment, or over the Contractor's methods of determining prices or over competitive bidding or market conditions. Opinions of probable costs provided herein are based on the information known to Engineer at this time and represent only the Engineer's judgment as a design professional familiar with the construction industry. The Engineer cannot and does not guarantee that proposals, bids, or actual construction costs will not vary from its opinions of probable costs.

Project Location Map Sources:

Esri, DeLorme, NAVTEQ, USGS, Intermap, iPC, NRCAN, Esri Japan, METI, Esri China (Hong Kong), Esri (Thailand), TomTom, 2013, DigitalGlobe, GeoEye, i-cubed, USDA, AEX, Getmapping, Aerogrip, IGN, IGP, swisstopo, and the GIS User Community

Client: City of Norman Date: 4/30/18
 Program: ADA Self-Evaluation and Transition Plan Prepared By: CMP
 KHA No.: 061298800 Checked By: EPE

Corridor : GPS ID: 18
 Project Name: Intersection of Stubbeman Ave and W Rock Creek Rd
 City: Norman

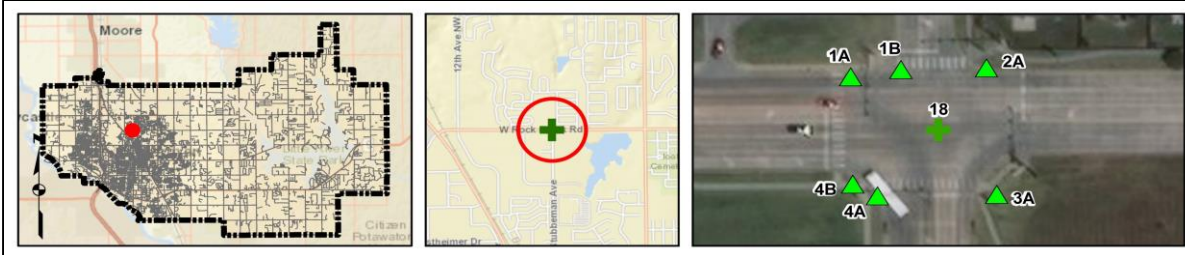
Item No.	Item Description	Quantity	Unit	Unit Price	Item Cost
ODOT 202(A)-0183	Unclassified Excavation	0	CY	\$ 5.50	\$ -
ODOT 609(A)-0300	Concrete Curb (6" Barrier-Integral)	0	LF	\$ 7.00	\$ -
ODOT 610(A)-0602	4" Concrete Sidewalk	80	SY	\$ 50.00	\$ 4,000.00
ODOT 610(U)-4610	Tactile Warning Device - New	80	SF	\$ 25.00	\$ 2,000.00
ODOT 610(U)-4615	Tactile Warning Device - Retrofit	0	SF	\$ 60.00	\$ -
ODOT 619(B)-4792	Removal of Sidewalk	80	SY	\$ 12.00	\$ 960.00
---	Push Button Pole	5	EA	\$ 1,200.00	\$ 6,000.00
---	---	0	---	---	---
ODOT 857(F)-8006	Pavement Marking Removal (Traffic Stripe)	0	LF	\$ 0.25	\$ -
---	Crosswalk Pavement Markings	450	LF	\$ 6.00	\$ 2,700.00
---	Pedestrian Push Button (APS)	0	EA	\$ 1,200.00	\$ -
---	Removal of Pedestrian Push Buttons	0	EA	\$ 50.00	\$ -
---	Relocate Pedestrian Push Button	6	EA	\$ 300.00	\$ 1,800.00
---	12" LED Countdown Ped Signal Module with Housing	0	EA	\$ 650.00	\$ -
---	Pedestrian Push Button Sign	8	EA	\$ 150.00	\$ 1,200.00
---	Remove Pedestrian Push Button Sign	8	EA	\$ 50.00	\$ 400.00
---	Repave Roadway	2	LS	\$ 5,000.00	\$ 10,000.00
---	Fix Ponding	2	LS	\$ 2,000.00	\$ 4,000.00
---	Fix Curb Ramp Transition	5	LS	\$ 2,000.00	\$ 10,000.00
---	Median Nose Modification	0	LS	\$ 5,000.00	\$ -
---	Remove Temporary Obstruction	0	LS	\$ 500.00	\$ -
---	Fix Curb Ramp Counter Slope	0	LS	\$ 2,000.00	\$ -

Basis for Cost Projection

- No Design Completed
- Preliminary Design
- Final Design

Subtotal:	\$	43,060.00
Engineering: (% +/-)	15%	\$ 6,831.43
Contingency: (% +/-)	20%	\$ 9,108.57
Estimated Project Cost:	\$	59,000.00

Project Location



Field Observations

Intersection Issues	Crosswalk				Possible Solutions
	N	E	S	W	
Path of travel pavement condition	Poor	Good	Good	Dangerous	Repave roadway and install crosswalk pavement markings
Path of travel running slope is greater than 5%					
Path of travel cross slope is greater than 5%					
Crosswalk width is less than 6'		N/A			
Crosswalk striping condition	Good	None	Good	Good	Install crosswalk pavement markings

Curb Ramp Issues	Curb Ramp ID ('z' or 'i' in ramp label indicates no existing ramp)						Possible Solutions
	1A	1B	2A	3A	4A	4B	
Curb ramp does not exist and is needed							
Curb ramp does not land in crosswalk							
No 4' x 4' clear space at base of curb ramp							
Curbed side is not 90° or has traversable adjacent surface	X	X	X	X	X	X	
Flare cross slope is greater than 10%							
Curb ramp running slope is greater than 8.3%	X	X	X				
Blended transition running slope is greater than 5%							
Cut-thru ramp running slope is greater than 5%							
Curb ramp cross slope is greater than 2%	X	X					Remove and replace curb ramp
Cut-thru ramp cross slope is greater than 5%							
Curb ramp width is less than 48"					X		
Cut-thru ramp width is less than 60"							
Permanent obstruction (>0.25") in curb ramp/landing/flares		X	X	X		X	
Temporary obstruction (>0.25") in curb ramp/landing/flares							
No textured surface at base of curb ramp	X	X	X	X	X	X	For intersection, commercial driveway, and park ramps, install color truncated domes
No color contrast at base of curb ramp	X	X	X	X	X	X	
Landing area does not exist and is needed							
Landing area is less than 5' x 5' or slopes greater than 2%	X		X	X	X	X	Remove and replace landing area
Missing or no pedestrian push buttons							
Pedestrian push button is offset more than 5' from the nearest crosswalk edge	X		X	X		X	Install push button pole and relocate pedestrian push buttons
Pedestrian push button offset more than 10' from curb face	X	X	X				
Pedestrian push button is not parallel to crosswalk							
Pedestrian push button height is greater than 48"							
Pedestrian push button diameter is not 2"							
Pedestrian push button sign does not exist							
Pedestrian push button sign is not MUTCD approved	X	X	X	X	X	X	Remove and replace pedestrian push button sign
Clear floor space does not exist and is needed							
Clear floor space for pedestrian push button is less than 30" x 48" or has a slope greater than 2%	X		X	X			Remove and replace clear floor space
Missing or no pedestrian signal heads							
Curb ramp transition onto roadway is greater than 0.25"		X	X	X	X	X	Fix curb ramp transition
Counter slope of the gutter or street at the foot of the curb ramp is greater than 5%							
Ponding occurs at base of curb ramp					X	X	Fix ponding



Ramp 1A



Ramp 1B



Ramp 2A



Ramp 3A



Ramp 4A



Ramp 4B

Opinion of Probable Construction Cost Disclaimer:

The Engineer has no control over the cost of labor, materials, equipment, or over the Contractor's methods of determining prices or over competitive bidding or market conditions. Opinions of probable costs provided herein are based on the information known to Engineer at this time and represent only the Engineer's judgment as a design professional familiar with the construction industry. The Engineer cannot and does not guarantee that proposals, bids, or actual construction costs will not vary from its opinions of probable costs.

Project Location Map Sources:

Esri, DeLorme, NAVTEQ, USGS, Intermap, iPC, NRCAN, Esri Japan, METI, Esri China (Hong Kong), Esri (Thailand), TomTom, 2013, DigitalGlobe, GeoEye, i-cubed, USDA, AEX, Getmapping, Aerogrip, IGN, IGP, swisstopo, and the GIS User Community

Client: City of Norman Date: 4/30/18
 Program: ADA Self-Evaluation and Transition Plan Prepared By: CMP
 KHA No.: 061298800 Checked By: EPE

Corridor : GPS ID: 19
 Project Name: Intersection of 12th Ave NW and W Tecumseh Rd
 City: Norman

Item No.	Item Description	Quantity	Unit	Unit Price	Item Cost
ODOT 202(A)-0183	Unclassified Excavation	0	CY	\$ 5.50	\$ -
ODOT 609(A)-0300	Concrete Curb (6" Barrier-Integral)	0	LF	\$ 7.00	\$ -
ODOT 610(A)-0602	4' Concrete Sidewalk	93	SY	\$ 50.00	\$ 4,650.00
ODOT 610(U)-4610	Tactile Warning Device - New	80	SF	\$ 25.00	\$ 2,000.00
ODOT 610(U)-4615	Tactile Warning Device - Retrofit	0	SF	\$ 60.00	\$ -
ODOT 619(B)-4792	Removal of Sidewalk	45	SY	\$ 12.00	\$ 540.00
---	Push Button Pole	3	EA	\$ 1,200.00	\$ 3,600.00
---	---	0	---	---	---
ODOT 857(F)-8006	Pavement Marking Removal (Traffic Stripe)	0	LF	\$ 0.25	\$ -
---	Crosswalk Pavement Markings	336	LF	\$ 6.00	\$ 2,016.00
---	Pedestrian Push Button (APS)	1	EA	\$ 1,200.00	\$ 1,200.00
---	Removal of Pedestrian Push Buttons	1	EA	\$ 50.00	\$ 50.00
---	Relocate Pedestrian Push Button	2	EA	\$ 300.00	\$ 600.00
---	12" LED Countdown Ped Signal Module with Housing	0	EA	\$ 650.00	\$ -
---	Pedestrian Push Button Sign	0	EA	\$ 150.00	\$ -
---	Remove Pedestrian Push Button Sign	0	EA	\$ 50.00	\$ -
---	Repave Roadway	2	LS	\$ 5,000.00	\$ 10,000.00
---	Fix Ponding	2	LS	\$ 2,000.00	\$ 4,000.00
---	Fix Curb Ramp Transition	1	LS	\$ 2,000.00	\$ 2,000.00
---	Median Nose Modification	0	LS	\$ 5,000.00	\$ -
---	Remove Temporary Obstruction	0	LS	\$ 500.00	\$ -
---	Fix Curb Ramp Counter Slope	0	LS	\$ 2,000.00	\$ -

Basis for Cost Projection		Subtotal:	\$	30,656.00
<input checked="" type="checkbox"/>	No Design Completed	Engineering: (% +/-)	15%	\$ 4,861.71
<input type="checkbox"/>	Preliminary Design	Contingency: (% +/-)	20%	\$ 6,482.29
<input type="checkbox"/>	Final Design	Estimated Project Cost:		\$ 42,000.00

Project Location



Field Observations

Intersection Issues	Crosswalk				Possible Solutions
	N	E	S	W	
Path of travel pavement condition	Good	Poor	Good	Poor	Repave roadway and install crosswalk pavement markings
Path of travel running slope is greater than 5%					
Path of travel cross slope is greater than 5%					
Crosswalk width is less than 6'					
Crosswalk striping condition	Good	Good	Good	Good	

Curb Ramp Issues	Curb Ramp ID ('z' or 'l' in ramp label indicates no existing ramp)				Possible Solutions
	1A	2z	3A	4A	
Curb ramp does not exist and is needed		X			Install curb ramp; if median improvement, see shapefile
Curb ramp does not land in crosswalk					
No 4' x 4' clear space at base of curb ramp					
Curbed side is not 90° or has traversable adjacent surface					
Flare cross slope is greater than 10%	X		X	X	
Curb ramp running slope is greater than 8.3%				X	
Blended transition running slope is greater than 5%					
Cut-thru ramp running slope is greater than 5%					
Curb ramp cross slope is greater than 2%					
Cut-thru ramp cross slope is greater than 5%					
Curb ramp width is less than 48"					
Cut-thru ramp width is less than 60"					
Permanent obstruction (>0.25") in curb ramp/landing/flares	X				
Temporary obstruction (>0.25") in curb ramp/landing/flares					
No textured surface at base of curb ramp	X		X	X	
No color contrast at base of curb ramp	X		X	X	
Landing area does not exist and is needed	X		X		
Landing area is less than 5' x 5' or slopes greater than 2%				X	
Missing or no pedestrian push buttons					
Pedestrian push button is offset more than 5' from the nearest crosswalk edge	X	X		X	
Pedestrian push button offset more than 10' from curb face					
Pedestrian push button is not parallel to crosswalk					
Pedestrian push button height is greater than 48"					
Pedestrian push button diameter is not 2"		X			
Pedestrian push button sign does not exist					
Pedestrian push button sign is not MUTCD approved					
Clear floor space does not exist and is needed	X	X	X		
Clear floor space for pedestrian push button is less than 30" x 48" or has a slope greater than 2%				X	
Missing or no pedestrian signal heads					
Curb ramp transition onto roadway is greater than 0.25"	X				
Counter slope of the gutter or street at the foot of the curb ramp is greater than 5%					
Ponding occurs at base of curb ramp	X		X		



Ramp 1A



Corner 2 No Ramp (2z)



Ramp 3A



Ramp 4A

Opinion of Probable Construction Cost Disclaimer:

The Engineer has no control over the cost of labor, materials, equipment, or over the Contractor's methods of determining prices or over competitive bidding or market conditions. Opinions of probable costs provided herein are based on the information known to Engineer at this time and represent only the Engineer's judgment as a design professional familiar with the construction industry. The Engineer cannot and does not guarantee that proposals, bids, or actual construction costs will not vary from its opinions of probable costs.

Project Location Map Sources:

Esri, DeLorme, NAVTEQ, USGS, Intermap, iPC, NRCAN, Esri Japan, METI, Esri China (Hong Kong), Esri (Thailand), TomTom, 2013, DigitalGlobe, GeoEye, i-cubed, USDA, AEX, Getmapping, Aerogrip, IGN, IGP, swisstopo, and the GIS User Community

Client: City of Norman Date: 4/30/18
 Program: ADA Self-Evaluation and Transition Plan Prepared By: CMP
 KHA No.: 061298800 Checked By: EPE

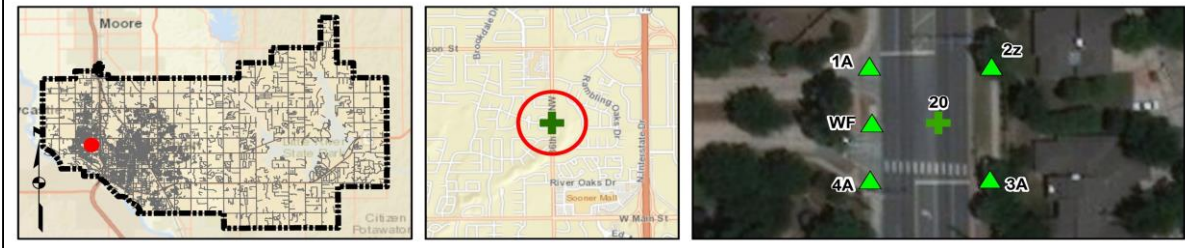
Corridor : GPS ID: 20
 Project Name: Intersection of Brookhollow Rd and 36th Ave NW
 City: Norman

Item No.	Item Description	Quantity	Unit	Unit Price	Item Cost
ODOT 202(A)-0183	Unclassified Excavation	0	CY	\$ 5.50	\$ -
ODOT 609(A)-0300	Concrete Curb (6" Barrier-Integral)	54	LF	\$ 7.00	\$ 378.00
ODOT 610(A)-0602	4" Concrete Sidewalk	76	SY	\$ 50.00	\$ 3,800.00
ODOT 610(U)-4610	Tactile Warning Device - New	80	SF	\$ 25.00	\$ 2,000.00
ODOT 610(U)-4615	Tactile Warning Device - Retrofit	0	SF	\$ 60.00	\$ -
ODOT 619(B)-4792	Removal of Sidewalk	51	SY	\$ 12.00	\$ 612.00
---	Push Button Pole	3	EA	\$ 1,200.00	\$ 3,600.00
ODOT 857(F)-8006	Pavement Marking Removal (Traffic Stripe)	0	LF	\$ 0.25	\$ -
---	Crosswalk Pavement Markings	162	LF	\$ 6.00	\$ 972.00
---	Pedestrian Push Button (APS)	2	EA	\$ 1,200.00	\$ 2,400.00
---	Removal of Pedestrian Push Buttons	0	EA	\$ 50.00	\$ -
---	Relocate Pedestrian Push Button	1	EA	\$ 300.00	\$ 300.00
---	12" LED Countdown Ped Signal Module with Housing	2	EA	\$ 650.00	\$ 1,300.00
---	Pedestrian Push Button Sign	4	EA	\$ 150.00	\$ 600.00
---	Remove Pedestrian Push Button Sign	4	EA	\$ 50.00	\$ 200.00
---	Repave Roadway	0	LS	\$ 5,000.00	\$ -
---	Fix Ponding	1	LS	\$ 2,000.00	\$ 2,000.00
---	Fix Curb Ramp Transition	1	LS	\$ 2,000.00	\$ 2,000.00
---	Median Nose Modification	0	LS	\$ 5,000.00	\$ -
---	Remove Temporary Obstruction	0	LS	\$ 500.00	\$ -
---	Fix Curb Ramp Counter Slope	0	LS	\$ 2,000.00	\$ -

Basis for Cost Projection

<input checked="" type="checkbox"/> No Design Completed	Subtotal:	\$ 20,162.00
<input type="checkbox"/> Preliminary Design	Engineering: (% +/-)	15% \$ 3,359.14
<input type="checkbox"/> Final Design	Contingency: (% +/-)	20% \$ 4,478.86
	Estimated Project Cost:	\$ 28,000.00

Project Location



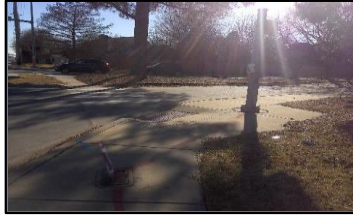
Field Observations

Intersection Issues	Crosswalk				Possible Solutions
	N	E	S	W	
Path of travel pavement condition	N/A	Good	Good	Good	
Path of travel running slope is greater than 5%	N/A				
Path of travel cross slope is greater than 5%	N/A				
Crosswalk width is less than 6'	N/A			N/A	
Crosswalk striping condition	N/A	Good	Good	None	Install crosswalk pavement markings

Curb Ramp Issues	Curb Ramp ID ('Z' or 'I' in ramp label indicates no existing ramp)					Possible Solutions	
	WF	1A	2Z	3A	4A		
Curb ramp does not exist and is needed	X		X			Install curb ramp; if median improvement, see shapefile	
Curb ramp does not land in crosswalk							
No 4' x 4' clear space at base of curb ramp							
Curb side is not 90° or has traversable adjacent surface	X	X		X	X		
Flare cross slope is greater than 10%							
Curb ramp running slope is greater than 8.3%							
Blended transition running slope is greater than 5%							
Cut-thru ramp running slope is greater than 5%							
Curb ramp cross slope is greater than 2%		X					Remove and replace curb ramp
Cut-thru ramp cross slope is greater than 5%							
Curb ramp width is less than 48"							
Cut-thru ramp width is less than 60"	X						
Permanent obstruction (>0.25") in curb ramp/landing/flares				X			
Temporary obstruction (>0.25") in curb ramp/landing/flares							
No textured surface at base of curb ramp							
No color contrast at base of curb ramp							
Landing area does not exist and is needed						Remove and replace landing area	
Landing area is less than 5' x 5' or slopes greater than 2%	X						
Missing or no pedestrian push buttons	X	X				Install push button pole and APS push buttons	
Pedestrian push button is offset more than 5' from the nearest crosswalk edge					X		
Pedestrian push button offset more than 10' from curb face							
Pedestrian push button is not parallel to crosswalk							
Pedestrian push button height is greater than 48"							
Pedestrian push button diameter is not 2"							
Pedestrian push button sign does not exist							
Pedestrian push button sign is not MUTCD approved	X		X	X		Remove and replace pedestrian push button sign	
Clear floor space does not exist and is needed	X	X	X				Install clear floor space
Clear floor space for pedestrian push button is less than 30" x 48" or has a slope greater than 2%	X				X		
Missing or no pedestrian signal heads	X	X				Install countdown pedestrian signal head	
Curb ramp transition onto roadway is greater than 0.25"					X		Fix curb ramp transition
Counter slope of the gutter or street at the foot of the curb ramp is greater than 5%							
Ponding occurs at base of curb ramp				X		Fix ponding	



Ramp West F



Ramp 1A



Corner 2 No Ramp (2z)



Ramp 3A



Ramp 4A

Opinion of Probable Construction Cost Disclaimer:

The Engineer has no control over the cost of labor, materials, equipment, or over the Contractor's methods of determining prices or over competitive bidding or market conditions. Opinions of probable costs provided herein are based on the information known to Engineer at this time and represent only the Engineer's judgment as a design professional familiar with the construction industry. The Engineer cannot and does not guarantee that proposals, bids, or actual construction costs will not vary from its opinions of probable costs.

Project Location Map Sources:

Esri, DeLorme, NAVTEQ, USGS, Intermap, iPC, NRCAN, Esri Japan, METI, Esri China (Hong Kong), Esri (Thailand), TomTom, 2013, DigitalGlobe, GeoEye, i-cubed, USDA, AEX, Getmapping, Aerogrip, IGN, IGP, swisstopo, and the GIS User Community