
***Lake Thunderbird TMDL Monitoring Plan Implementation:
Sample Year (SY) 2019- December Report***



SY2019 Monthly Report

Lake Thunderbird TMDL Monitoring Plan Implementation:

December 2019 Monitoring Report

Oklahoma Water Resources Board
Water Quality Programs Division
Monitoring and Assessment Section
3800 N. Classen, Oklahoma City, Oklahoma 73118
405-530-8800

Contact

Sarah Dexter, Project Leader, sarah.dexter@owrb.ok.gov

Jason Murphy, Project Supervisor, jason.murphy@owrb.ok.gov

Lance Phillips, Streams Program Manager, lance.phillips@owrb.ok.gov

Bill Cauthron, Monitoring Coordinator, bill.cauthron@owrb.ok.gov

TABLE OF CONTENTS

Table of Contents	3
List of Tables	3
List of Figures	3
Summary of December Water Quality Sampling	4
Results	4

LIST OF TABLES

TABLE 1 FIELD DATA FORM	5
TABLE 2 LABORATORY ANALYSIS SUMMARY	6
TABLE 3 QA/QC DATA	6
TABLE 4 STATION DISCHARGE SUMMARY	6

LIST OF FIGURES

FIGURE 1 MONITORING STATION MAP	4
FIGURE 2 DISCHARGE MEASUREMENT SUMMARY CC-1.....	7
FIGURE 3 DISCHARGE MEASUREMENT SUMMARY JB-1	8
FIGURE 4 DISCHARGE MEASUREMENT SUMMARY UDB-1.....	9
FIGURE 5 DISCHARGE MEASUREMENT SUMMARY LT-1	10
FIGURE 6 DISCHARGE MEASUREMENT SUMMARY LRC-1	11
FIGURE 7 DISCHARGE MEASUREMENT SUMMARY TE-1	12
FIGURE 8 DISCHARGE MEASUREMENT SUMMARY TG-1	13
FIGURE 9 DISCHARGE MEASUREMENT SUMMARY URC-2	14
FIGURE 10 DISCHARGE MEASUREMENT SUMMARY WC-1	15
FIGURE 11 MONTHLY HYDROGRAPH TG-1.....	16
FIGURE 12 MONTHLY HYDROGRAPH TE-1	16
FIGURE 13 MONTHLY HYDROGRAPH WC-1.....	17
FIGURE 14 MONTHLY HYDROGRAPH URC-2	17
FIGURE 15 MONTHLY HYDROGRAPH LRC-1	18
FIGURE 16 MONTHLY HYDROGRAPH LDB-1	18
FIGURE 17 MONTHLY HYDROGRAPH JB-1	19
FIGURE 18 MONTHLY HYDROGRAPH UDB-1	19
FIGURE 19 MONTHLY HYDROGRAPH CC-1	20
FIGURE 20 DECEMBER MESONET DATA	21

SUMMARY OF DECEMBER WATER QUALITY SAMPLING

Sampling for December 2019 occurred on the seventeenth and was considered a base flow collection. Water samples were collected at all ten locations, and discharge measurements were collected at nine locations. Mesonet data shows no precipitation occurring on the seventeenth, 0.02 inches of precipitation in the 72 hours prior to sampling, and no precipitation in the 72 hours after the sampling event. The total rainfall amount in Norman for the month of December was 0.58 inches. All water level gauges were operational for the month, with the exception of LT-1 and CC-1 due to equipment malfunction.

RESULTS

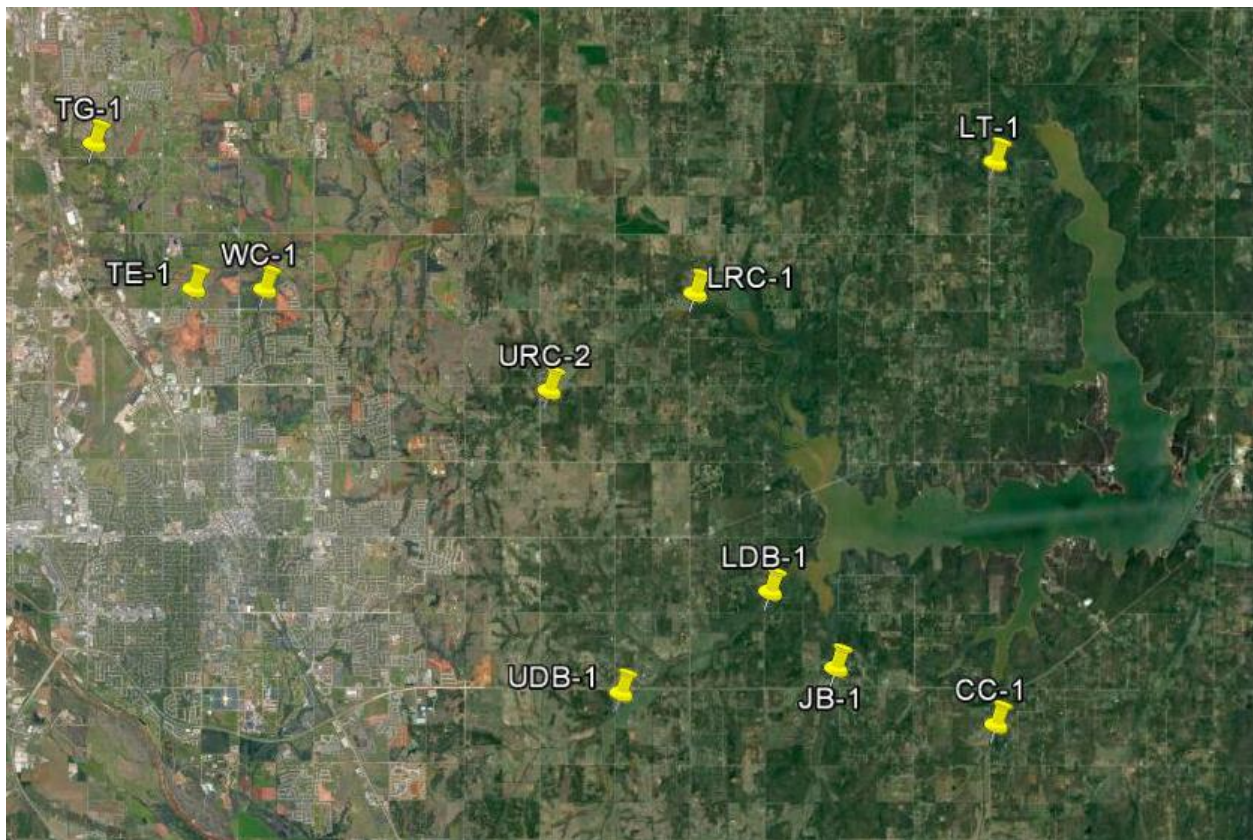


Figure 1 Monitoring Station Map

Monitoring Location ID	Monitoring Location Name	Date	Time	Field Crew	Water Temperature (°C)	Dissolved Oxygen (DO) (mg/l)	pH	Specific Conductance (mS/cm)	Turbidity (NTU)	Notes
CC-1	Clear Creek	12-17-2019	10:10	SD	3.3	13.34	7.93	713	4	None of rps over water, estimated from rp2 which was closest to edge of water
JB-1	Jim Blue Creek	12-17-2019	10:55	SD	2.7	12.42	7.65	961	2	rp1 not over water
LDB-1	Lower Dave Blue Creek	12-17-2019	11:30	SD	4.0	14.03	7.93	890	7	
LRC-1	Lower Rock Creek	12-17-2019	13:00	SD	3.6	12.10	7.61	490	10	
LT-1	Lake Laterals	12-17-2019	12:10	SD	4.9	7.01	7.40	569	2	downstream completely frozen
TE-1	Little River Tributary	12-17-2019	15:00	SD	6.5	13.44	7.90	1137	21	
TG-1	Little River Tributary	12-17-2019	15:45	SD	4.2	14.48	7.90	1205	5	
UDB-1	Upper Dave Blue Creek	12-17-2019	9:05	SD	2.0	11.31	7.68	1003	9	
URC-2	Upper Rock Creek	12-17-2019	13:45	SD	5.1	11.09	7.49	394	11	rp1 not over water, used rp2
WC-1	Woodcrest Creek	12-17-2019	14:30	SD	6.0	7.57	7.54	1082	3	changed dcp

Table 1 Field Data Form

Monitoring Location ID	Monitoring Location Name	Nitrate and Nitrite (mg/l)	Kjeldahl Nitrogen (mg/l)	Phosphorus (mg/l)	Total Suspended Solids (mg/l)
CC-1	Clear Creek	0.16	0.12	0.020	<5.0
JB-1	Jim Blue Creek	<0.05	0.23	0.021	<5.0
LDB-1	Lower Dave Blue Creek	0.06	0.44	0.036	<5.0
LRC-1	Lower Rock Creek	0.32	0.79	0.057	10.0
LT-1	Lake Laterals	<0.05	0.34	0.030	12.0
TE-1	Little River Tributary	<0.05	0.51	0.039	16.0
TG-1	Little River Tributary	0.10	0.32	0.033	12.0
UDB-1	Upper Dave Blue Creek	<0.05	0.13	0.026	<5.0
URC-2	Upper Rock Creek	0.35	0.95	0.054	8.0
WC-1	Woodcrest Creek	<0.05	0.37	0.063	<5.0

Table 2 Laboratory Analysis Summary

Monitoring Location Name	Nitrate and Nitrite (mg/l)	Kjeldahl Nitrogen (mg/l)	Phosphorus (mg/l)	Total Suspended Solids (mg/l)
Field Blank	<0.05	<0.10	<0.010	<5.0
Duplicate	0.16	0.11	0.019	<5.0
Duplicate RPD	0%	8.70%	5.13%	0%

Table 3 QA/QC Data

Quality assurance/quality control (QA/QC) of the data includes a field blank and duplicate sample from each collection event, and is qualified by the OWRB. Relative Percent Difference (RPD) of the duplicate sample can be categorized into four levels, where Level 1 likely has no QA issues and Level 4 has major QA issues, and should be used with caution.

Monitoring Location ID	Monitoring Location Name	Discharge (cfs)	Stream Stage (ft)
CC-1	Clear Creek	0.41	20.39
JB-1	Jim Blue Creek	0.21	15.76
LDB-1	Lower Dave Blue Creek	2.08	16.53
LRC-1	Lower Rock Creek	1.90	18.64
LT-1	Lake Laterals	0.04	4.29
TE-1	Little River Tributary	0.29	11.34
TG-1	Little River Tributary	0.71	9.00
UDB-1	Upper Dave Blue Creek	0.41	17.26
URC-2	Upper Rock Creek	0.44	11.00
WC-1	Woodcrest Creek	0.08	7.73

Table 4 Station Discharge Summary

Discharge Measurement Summary

Date Generated: Wed Dec 18 2019

File Information		Site Details	
File Name	CC121719.WAD	Site Name	CC121719
Start Date and Time	2019/12/17 09:55:20	Operator(s)	ZMM

System Information		Units (English Units)		Discharge Uncertainty		
Sensor Type	FlowTracker	Distance	ft	Category	ISO	Stats
Serial #	P4709	Velocity	ft/s	Accuracy	1.0%	1.0%
CPU Firmware Version	3.9	Area	ft^2	Depth	0.7%	6.6%
Software Ver	2.30	Discharge	cfs	Velocity	3.3%	48.3%
Mounting Correction	0.0%			Width	0.2%	0.2%

Summary			
Averaging Int.	40	# Stations	11
Start Edge	LEW	Total Width	8.000
Mean SNR	38.8 dB	Total Area	1.600
Mean Temp	37.38 °F	Mean Depth	0.200
Disch. Equation	Mid-Section	Mean Velocity	0.2568
		Total Discharge	0.4109

Supplemental Data					
#	Time	Location	Gauge Height	Rated Flow	Comments
1	Tue Dec 17 10:01:44 CST 2019	3.000	20.390		

Measurement Results												
St	Clock	Loc	Method	Depth	%Dep	MeasD	Vel	CorrFact	MeanV	Area	Flow	%Q
0	09:55	0.00	None	0.000	0.0	0.0	0.0000	1.00	0.0000	0.000	0.0000	0.0
1	10:00	1.50	0.6	0.300	0.6	0.120	0.3471	1.00	0.3471	0.300	0.1041	25.3
2	10:02	2.00	0.6	0.300	0.6	0.120	0.7871	1.00	0.7871	0.150	0.1180	28.7
3	10:02	2.50	0.6	0.300	0.6	0.120	0.0089	1.00	0.0089	0.150	0.0013	0.3
4	10:05	3.00	0.6	0.200	0.6	0.080	0.2749	1.00	0.2749	0.200	0.0550	13.4
5	10:07	4.50	0.6	0.200	0.6	0.080	0.0000	1.00	0.0000	0.200	0.0000	0.0
6	10:09	5.00	0.6	0.200	0.6	0.080	0.5673	1.00	0.5673	0.100	0.0568	13.8
7	10:12	5.50	0.6	0.300	0.6	0.120	0.0075	1.00	0.0075	0.150	0.0011	0.3
8	10:13	6.00	0.6	0.300	0.6	0.120	0.4974	1.00	0.4974	0.150	0.0746	18.1
9	10:14	6.50	0.6	0.200	0.6	0.080	0.0000	1.00	0.0000	0.200	0.0000	0.0
10	10:14	8.00	None	0.000	0.0	0.0	0.0000	1.00	0.0000	0.000	0.0000	0.0

Rows in italics indicate a QC warning. See the Quality Control page of this report for more information.

Figure 2 Discharge Measurement Summary CC-1

Discharge Measurement Summary

Date Generated: Wed Dec 18 2019

File Information

File Name JB121719.WAD
Start Date and Time 2019/12/17 10:46:04

Site Details

Site Name JB121719
Operator(s) ZMM

System Information

Sensor Type FlowTracker
Serial # P4709
CPU Firmware Version 3.9
Software Ver 2.30
Mounting Correction 0.0%

Units (English Units)

Distance ft
Velocity ft/s
Area ft²
Discharge cfs

Discharge Uncertainty

Category	ISO	Stats
Accuracy	1.0%	1.0%
Depth	0.7%	5.6%
Velocity	2.6%	11.4%
Width	0.2%	0.2%
Method	3.6%	-
# Stations	5.8%	-
Overall	7.4%	12.7%

Summary

Averaging Int. 40 # Stations 9
Start Edge LEW Total Width 4.000
Mean SNR 32.6 dB Total Area 2.200
Mean Temp 36.45 °F Mean Depth 0.550
Disch. Equation Mid-Section Mean Velocity 0.0949
Total Discharge 0.2088

Supplemental Data

#	Time	Location	Gauge Height	Rated Flow	Comments
1	Tue Dec 17 10:44:12 CST 2019	0.000	15.760		

Measurement Results

St	Clock	Loc	Method	Depth	%Dep	MeasD	Vel	CorrFact	MeanV	Area	Flow	%Q
0	10:46	0.00	None	0.000	0.0	0.0	0.0000	1.00	0.0000	0.000	0.0000	0.0
1	10:47	0.50	0.6	0.200	0.6	0.080	0.0003	1.00	0.0003	0.100	0.0000	0.0
2	10:52	1.00	0.6	0.600	0.6	0.240	0.0000	1.00	0.0000	0.300	0.0000	0.0
3	10:53	1.50	0.6	0.800	0.6	0.320	0.0869	1.00	0.0869	0.400	0.0348	16.7
4	10:54	2.00	0.6	0.800	0.6	0.320	0.0932	1.00	0.0932	0.400	0.0373	17.8
5	10:56	2.50	0.6	0.800	0.6	0.320	0.1440	1.00	0.1440	0.400	0.0576	27.6
6	10:57	3.00	0.6	0.800	0.6	0.320	0.1558	1.00	0.1558	0.400	0.0623	29.9
7	10:59	3.50	0.6	0.400	0.6	0.160	0.0840	1.00	0.0840	0.200	0.0168	8.0
8	10:59	4.00	None	0.000	0.0	0.0	0.0000	1.00	0.0000	0.000	0.0000	0.0

Rows in italics indicate a QC warning. See the Quality Control page of this report for more information.

Figure 3 Discharge Measurement Summary JB-1

Discharge Measurement Summary

Date Generated: Wed Dec 18 2019

File Information

File Name UDB1217.WAD
Start Date and Time 2019/12/17 08:51:42

Site Details

Site Name UDB121719
Operator(s) ZMM

System Information

Sensor Type FlowTracker
Serial # P4709
CPU Firmware Version 3.9
Software Ver 2.30
Mounting Correction 0.0%

Units (English Units)

Distance ft
Velocity ft/s
Area ft²
Discharge cfs

Discharge Uncertainty

Category	ISO	Stats
Accuracy	1.0%	1.0%
Depth	0.3%	2.7%
Velocity	1.6%	9.4%
Width	0.1%	0.1%
Method	1.9%	-
# Stations	1.7%	-
Overall	3.2%	9.8%

Summary

Averaging Int. 40 # Stations 31
Start Edge LEW Total Width 15.000
Mean SNR 17.7 dB Total Area 11.750
Mean Temp 35.19 °F Mean Depth 0.783
Disch. Equation Mid-Section Mean Velocity 0.0347
Total Discharge 0.4080

Supplemental Data

#	Time	Location	Gauge Height	Rated Flow	Comments
1	Tue Dec 17 09:00:35 CST 2019	4.000	17.260		

Measurement Results

St	Clock	Loc	Method	Depth	%Dep	MeasD	Vel	CorrFact	MeanV	Area	Flow	%Q
0	08:51	0.00	None	0.000	0.0	0.0	0.0000	1.00	0.0000	0.000	0.0000	0.0
1	08:51	0.50	0.6	0.300	0.6	0.120	0.0000	1.00	0.0000	0.150	0.0000	0.0
2	08:53	1.00	0.6	0.400	0.6	0.160	-0.0003	1.00	-0.0003	0.200	-0.0001	0.0
3	08:54	1.50	0.6	0.600	0.6	0.240	0.0000	1.00	0.0000	0.300	0.0000	0.0
4	08:55	2.00	0.6	0.700	0.6	0.280	0.0098	1.00	0.0098	0.350	0.0034	0.8
5	08:56	2.50	0.6	0.800	0.6	0.320	0.0066	1.00	0.0066	0.400	0.0026	0.6
6	08:58	3.00	0.6	1.000	0.6	0.400	0.0167	1.00	0.0167	0.500	0.0084	2.1
7	08:59	3.50	0.6	0.700	0.6	0.280	0.0174	1.00	0.0174	0.350	0.0061	1.5
8	09:00	4.00	0.6	1.000	0.6	0.400	0.0007	1.00	0.0007	0.500	0.0003	0.1
9	09:02	4.50	0.6	1.000	0.6	0.400	0.0207	1.00	0.0207	0.500	0.0103	2.5
10	09:03	5.00	0.6	0.800	0.6	0.320	0.0190	1.00	0.0190	0.400	0.0076	1.9
11	09:05	5.50	0.6	1.000	0.6	0.400	0.0269	1.00	0.0269	0.500	0.0135	3.3
12	09:06	6.00	0.6	0.900	0.6	0.360	0.0223	1.00	0.0223	0.450	0.0100	2.5
13	09:07	6.50	0.6	1.200	0.6	0.480	0.0322	1.00	0.0322	0.600	0.0193	4.7
14	09:08	7.00	0.6	1.200	0.6	0.480	0.0551	1.00	0.0551	0.600	0.0331	8.1
15	09:09	7.50	0.6	1.200	0.6	0.480	0.0505	1.00	0.0505	0.600	0.0303	7.4
16	09:10	8.00	0.6	1.200	0.6	0.480	0.0344	1.00	0.0344	0.600	0.0207	5.1
17	09:11	8.50	0.6	1.100	0.6	0.440	0.0226	1.00	0.0226	0.550	0.0125	3.1
18	09:13	9.00	0.6	1.200	0.6	0.480	0.0627	1.00	0.0627	0.600	0.0376	9.2
19	09:14	9.50	0.6	1.000	0.6	0.400	0.0866	1.00	0.0866	0.500	0.0433	10.6
20	09:16	10.00	0.6	0.800	0.6	0.320	0.0390	1.00	0.0390	0.400	0.0156	3.8
21	09:17	10.50	0.6	0.800	0.6	0.320	0.1178	1.00	0.1178	0.400	0.0471	11.5
22	09:18	11.00	0.6	0.800	0.6	0.320	0.0741	1.00	0.0741	0.400	0.0297	7.3
23	09:19	11.50	0.6	0.700	0.6	0.280	0.0663	1.00	0.0663	0.350	0.0232	5.7
24	09:20	12.00	0.6	0.700	0.6	0.280	0.0505	1.00	0.0505	0.350	0.0177	4.3
25	09:21	12.50	0.6	0.700	0.6	0.280	0.0144	1.00	0.0144	0.350	0.0051	1.2
26	09:23	13.00	0.6	0.500	0.6	0.200	0.0052	1.00	0.0052	0.250	0.0013	0.3
27	09:24	13.50	0.6	0.500	0.6	0.200	0.0082	1.00	0.0082	0.250	0.0021	0.5
28	09:25	14.00	0.6	0.400	0.6	0.160	0.0177	1.00	0.0177	0.200	0.0035	0.9
29	09:26	14.50	0.6	0.300	0.6	0.120	0.0256	1.00	0.0256	0.150	0.0038	0.9
30	09:26	15.00	None	0.000	0.0	0.0	0.0000	1.00	0.0000	0.000	0.0000	0.0

Rows in italics indicate a QC warning. See the Quality Control page of this report for more information.

Figure 4 Discharge Measurement Summary UDB-1

Discharge Measurement Summary

Date Generated: Wed Dec 18 2019

File Information				Site Details																											
File Name	LT121719.WAD			Site Name	LT121719																										
Start Date and Time	2019/12/17 12:10:53			Operator(s)	ZMM																										
System Information				Units (English Units)		Discharge Uncertainty																									
Sensor Type	FlowTracker			Distance	ft		<table border="1"> <thead> <tr> <th>Category</th> <th>ISO</th> <th>Stats</th> </tr> </thead> <tbody> <tr> <td>Accuracy</td> <td>1.0%</td> <td>1.0%</td> </tr> <tr> <td>Depth</td> <td>0.7%</td> <td>1.7%</td> </tr> <tr> <td>Velocity</td> <td>3.6%</td> <td>31.7%</td> </tr> <tr> <td>Width</td> <td>0.2%</td> <td>0.2%</td> </tr> <tr> <td>Method</td> <td>3.3%</td> <td>-</td> </tr> <tr> <td># Stations</td> <td>4.2%</td> <td>-</td> </tr> <tr> <td>Overall</td> <td>6.6%</td> <td>31.8%</td> </tr> </tbody> </table>	Category	ISO	Stats	Accuracy	1.0%	1.0%	Depth	0.7%	1.7%	Velocity	3.6%	31.7%	Width	0.2%	0.2%	Method	3.3%	-	# Stations	4.2%	-	Overall	6.6%	31.8%
Category	ISO	Stats																													
Accuracy	1.0%	1.0%																													
Depth	0.7%	1.7%																													
Velocity	3.6%	31.7%																													
Width	0.2%	0.2%																													
Method	3.3%	-																													
# Stations	4.2%	-																													
Overall	6.6%	31.8%																													
Serial #	P4709			Velocity	ft/s																										
CPU Firmware Version	3.9			Area	ft^2																										
Software Ver	2.30			Discharge	cfs																										
Mounting Correction	0.0%																														
Summary																															
Averaging Int.	40	# Stations	12																												
Start Edge	LEW	Total Width	6.500																												
Mean SNR	37.4 dB	Total Area	2.100																												
Mean Temp	40.78 °F	Mean Depth	0.323																												
Disch. Equation	Mid-Section	Mean Velocity	0.0197																												
		Total Discharge	0.0413																												
Supplemental Data																															
#	Time	Location	Gauge Height	Rated Flow	Comments																										
1	Tue Dec 17 12:08:20 CST 2019	0.000	4.290																												
Measurement Results																															
St	Clock	Loc	Method	Depth	%Dep	MeasD	Vel	CorrFact	MeanV	Area	Flow	%Q																			
0	12:10	0.00	None	0.000	0.0	0.0	0.0000	1.00	0.0000	0.000	0.0000	0.0																			
1	12:10	1.50	0.6	0.300	0.6	0.120	0.0236	1.00	0.0236	0.300	0.0071	17.2																			
2	12:12	2.00	0.6	0.400	0.6	0.160	0.0299	1.00	0.0299	0.200	0.0060	14.5																			
3	12:13	2.50	0.6	0.400	0.6	0.160	0.0016	1.00	0.0016	0.200	0.0003	0.8																			
4	12:14	3.00	0.6	0.400	0.6	0.160	0.0046	1.00	0.0046	0.200	0.0009	2.2																			
5	12:15	3.50	0.6	0.400	0.6	0.160	0.0003	1.00	0.0003	0.200	0.0001	0.2																			
6	12:17	4.00	0.6	0.400	0.6	0.160	-0.0007	1.00	-0.0007	0.200	-0.0001	-0.3																			
7	12:19	4.50	0.6	0.400	0.6	0.160	0.0394	1.00	0.0394	0.200	0.0079	19.1																			
8	12:21	5.00	0.6	0.400	0.6	0.160	0.0545	1.00	0.0545	0.200	0.0109	26.4																			
9	12:23	5.50	0.6	0.400	0.6	0.160	0.0003	1.00	0.0003	0.200	0.0001	0.2																			
10	12:25	6.00	0.6	0.400	0.6	0.160	0.0410	1.00	0.0410	0.200	0.0082	19.9																			
11	12:25	6.50	None	0.000	0.0	0.0	0.0000	1.00	0.0000	0.000	0.0000	0.0																			

Rows in italics indicate a QC warning. See the Quality Control page of this report for more information.

Figure 5 Discharge Measurement Summary LT-1

Discharge Measurement Summary

Date Generated: Wed Dec 18 2019

File Information		Site Details	
File Name	LRC1217.WAD	Site Name	LRC121719
Start Date and Time	2019/12/17 12:49:57	Operator(s)	ZMM

System Information		Units (English Units)		Discharge Uncertainty		
Sensor Type	FlowTracker	Distance	ft	Category	ISO	Stats
Serial #	P4709	Velocity	ft/s	Accuracy	1.0%	1.0%
CPU Firmware Version	3.9	Area	ft^2	Depth	0.2%	1.1%
Software Ver	2.30	Discharge	cfs	Velocity	0.8%	4.5%
Mounting Correction	0.0%			Width	0.2%	0.2%
				Method	2.3%	-
				# Stations	2.1%	-
				Overall	3.3%	4.7%

Summary			
Averaging Int.	40	# Stations	24
Start Edge	LEW	Total Width	24.000
Mean SNR	29.3 dB	Total Area	17.050
Mean Temp	38.24 °F	Mean Depth	0.710
Disch. Equation	Mid-Section	Mean Velocity	0.1112
		Total Discharge	1.8960

Supplemental Data					
#	Time	Location	Gauge Height	Rated Flow	Comments
1	Tue Dec 17 12:49:14 CST 2019	0.000	18.640		

Measurement Results												
St	Clock	Loc	Method	Depth	%Dep	MeasD	Vel	CorrFact	MeanV	Area	Flow	%Q
0	12:49	0.00	None	0.000	0.0	0.0	0.0000	1.00	0.0000	0.000	0.0000	0.0
1	12:49	1.00	0.6	0.400	0.6	0.160	-0.0085	1.00	-0.0085	0.400	-0.0034	-0.2
2	12:51	2.00	0.6	0.500	0.6	0.200	0.0033	1.00	0.0033	0.500	0.0016	0.1
3	12:53	3.00	0.6	0.600	0.6	0.240	0.0000	1.00	0.0000	0.600	0.0000	0.0
4	12:54	4.00	0.6	0.800	0.6	0.320	0.0886	1.00	0.0886	0.800	0.0709	3.7
5	12:55	5.00	0.6	0.900	0.6	0.360	0.1106	1.00	0.1106	0.900	0.0995	5.2
6	12:56	6.00	0.6	1.000	0.6	0.400	0.1424	1.00	0.1424	1.000	0.1424	7.5
7	12:57	7.00	0.6	1.100	0.6	0.440	0.1558	1.00	0.1558	1.100	0.1714	9.0
8	12:58	8.00	0.6	1.100	0.6	0.440	0.1923	1.00	0.1923	1.100	0.2115	11.2
9	12:59	9.00	0.6	1.100	0.6	0.440	0.1818	1.00	0.1818	1.100	0.1999	10.5
10	13:00	10.00	0.6	1.100	0.6	0.440	0.2001	1.00	0.2001	1.100	0.2202	11.6
11	13:01	11.00	0.6	1.100	0.6	0.440	0.2096	1.00	0.2096	1.100	0.2306	12.2
12	13:02	12.00	0.6	1.000	0.6	0.400	0.2028	1.00	0.2028	1.000	0.2028	10.7
13	13:03	13.00	0.6	1.000	0.6	0.400	0.1755	1.00	0.1755	1.000	0.1755	9.3
14	13:05	14.00	0.6	0.900	0.6	0.360	0.0587	1.00	0.0587	0.900	0.0529	2.8
15	13:06	15.00	0.6	0.800	0.6	0.320	0.0056	1.00	0.0056	0.800	0.0045	0.2
16	13:07	16.00	0.6	0.800	0.6	0.320	-0.0121	1.00	-0.0121	0.800	-0.0097	-0.5
17	13:08	17.00	0.6	0.600	0.6	0.240	0.0476	1.00	0.0476	0.600	0.0285	1.5
18	13:10	18.00	0.6	0.600	0.6	0.240	0.0400	1.00	0.0400	0.600	0.0240	1.3
19	13:11	19.00	0.6	0.500	0.6	0.200	0.0410	1.00	0.0410	0.500	0.0205	1.1
20	13:13	20.00	0.6	0.400	0.6	0.160	-0.0003	1.00	-0.0003	0.400	-0.0001	0.0
21	13:14	21.00	0.6	0.300	0.6	0.120	0.0689	1.00	0.0689	0.300	0.0207	1.1
22	13:15	22.00	0.6	0.300	0.6	0.120	0.0709	1.00	0.0709	0.450	0.0319	1.7
23	13:15	24.00	None	0.000	0.0	0.0	0.0000	1.00	0.0000	0.000	0.0000	0.0

Rows in italics indicate a QC warning. See the Quality Control page of this report for more information.

Figure 6 Discharge Measurement Summary LRC-1

Discharge Measurement Summary

Date Generated: Wed Dec 18 2019

File Information

File Name TE121719.WAD
 Start Date and Time 2019/12/17 14:50:47

Site Details

Site Name TE121719
 Operator(s) ZMM

System Information

Sensor Type FlowTracker
 Serial # P4709
 CPU Firmware Version 3.9
 Software Ver 2.30
 Mounting Correction 0.0%

Units (English Units)

Distance ft
 Velocity ft/s
 Area ft²
 Discharge cfs

Discharge Uncertainty

Category	ISO	Stats
Accuracy	1.0%	1.0%
Depth	0.2%	1.8%
Velocity	1.0%	4.7%
Width	0.1%	0.1%
Method	2.1%	-
# Stations	2.3%	-
Overall	3.4%	5.1%

Summary

Averaging Int.	40	# Stations	22
Start Edge	LEW	Total Width	14.000
Mean SNR	38.4 dB	Total Area	9.050
Mean Temp	43.06 °F	Mean Depth	0.646
Disch. Equation	Mid-Section	Mean Velocity	0.0321
		Total Discharge	0.2909

Supplemental Data

#	Time	Location	Gauge Height	Rated Flow	Comments
1	Tue Dec 17 14:56:55 CST 2019	5.500	11.340		

Measurement Results

St	Clock	Loc	Method	Depth	%Dep	MeasD	Vel	CorrFact	MeanV	Area	Flow	%Q
0	14:50	0.00	None	0.000	0.0	0.0	0.0000	1.00	0.0000	0.000	0.0000	0.0
1	14:50	3.50	0.6	0.400	0.6	0.160	-0.0036	1.00	-0.0036	0.800	-0.0029	-1.0
2	14:53	4.00	0.6	0.500	0.6	0.200	0.0207	1.00	0.0207	0.250	0.0052	1.8
3	14:54	4.50	0.6	0.800	0.6	0.320	0.0423	1.00	0.0423	0.400	0.0169	5.8
4	14:56	5.00	0.6	1.000	0.6	0.400	0.0384	1.00	0.0384	0.500	0.0192	6.6
5	14:57	5.50	0.6	0.900	0.6	0.360	0.0404	1.00	0.0404	0.450	0.0182	6.2
6	14:58	6.00	0.6	1.000	0.6	0.400	0.0492	1.00	0.0492	0.500	0.0246	8.5
7	14:59	6.50	0.6	1.000	0.6	0.400	0.0594	1.00	0.0594	0.500	0.0297	10.2
8	15:00	7.00	0.6	1.100	0.6	0.440	0.0443	1.00	0.0443	0.550	0.0244	8.4
9	15:01	7.50	0.6	1.300	0.6	0.520	0.0440	1.00	0.0440	0.650	0.0286	9.8
10	15:02	8.00	0.6	1.400	0.6	0.560	0.0476	1.00	0.0476	0.700	0.0333	11.4
11	15:03	8.50	0.6	1.300	0.6	0.520	0.0262	1.00	0.0262	0.650	0.0171	5.9
12	15:04	9.00	0.6	1.000	0.6	0.400	0.0279	1.00	0.0279	0.500	0.0139	4.8
13	15:05	9.50	0.6	0.800	0.6	0.320	0.0253	1.00	0.0253	0.400	0.0101	3.5
14	15:06	10.00	0.6	0.800	0.6	0.320	0.0440	1.00	0.0440	0.400	0.0176	6.0
15	15:07	10.50	0.6	0.700	0.6	0.280	0.0413	1.00	0.0413	0.350	0.0145	5.0
16	15:08	11.00	0.6	0.700	0.6	0.280	0.0344	1.00	0.0344	0.350	0.0121	4.1
17	15:09	11.50	0.6	0.600	0.6	0.240	0.0187	1.00	0.0187	0.300	0.0056	1.9
18	15:10	12.00	0.6	0.600	0.6	0.240	0.0197	1.00	0.0197	0.300	0.0059	2.0
19	15:11	12.50	0.6	0.400	0.6	0.160	0.0030	1.00	0.0030	0.200	0.0006	0.2
20	15:12	13.00	0.6	0.400	0.6	0.160	-0.0118	1.00	-0.0118	0.300	-0.0035	-1.2
21	15:12	14.00	None	0.000	0.0	0.0	0.0000	1.00	0.0000	0.000	0.0000	0.0

Rows in italics indicate a QC warning. See the Quality Control page of this report for more information.

Figure 7 Discharge Measurement Summary TE-1

Discharge Measurement Summary

Date Generated: Wed Dec 18 2019

File Information

File Name TG121719.WAD
Start Date and Time 2019/12/17 15:32:23

Site Details

Site Name TG121719
Operator(s) ZMM

System Information

Sensor Type FlowTracker
Serial # P4709
CPU Firmware Version 3.9
Software Ver 2.30
Mounting Correction 0.0%

Units (English Units)

Distance ft
Velocity ft/s
Area ft²
Discharge cfs

Discharge Uncertainty

Category	ISO	Stats
Accuracy	1.0%	1.0%
Depth	0.2%	1.8%
Velocity	1.3%	6.8%
Width	0.2%	0.2%
Method	2.5%	-
# Stations	2.6%	-
Overall	4.0%	7.2%

Summary

Averaging Int. 40 # Stations 19
Start Edge LEW Total Width 18.000
Mean SNR 23.4 dB Total Area 16.701
Mean Temp 39.07 °F Mean Depth 0.928
Disch. Equation Mid-Section Mean Velocity 0.0424
Total Discharge 0.7073

Supplemental Data

#	Time	Location	Gauge Height	Rated Flow	Comments
1	Tue Dec 17 15:45:33 CST 2019	13.000	9.000		

Measurement Results

St	Clock	Loc	Method	Depth	%Dep	MeasD	Vel	CorrFact	MeanV	Area	Flow	%Q
0	15:32	0.00	None	0.000	0.0	0.0	0.0000	1.00	0.0000	0.000	0.0000	0.0
1	15:32	1.00	0.6	0.500	0.6	0.200	-0.0636	1.00	-0.0636	0.500	-0.0318	-4.5
2	15:33	2.00	0.6	0.800	0.6	0.320	-0.0341	1.00	-0.0341	0.800	-0.0273	-3.9
3	15:34	3.00	0.6	1.000	0.6	0.400	0.0456	1.00	0.0456	1.000	0.0456	6.4
4	15:36	4.00	0.6	1.200	0.6	0.480	0.0771	1.00	0.0771	1.200	0.0925	13.1
5	15:37	5.00	0.6	1.100	0.6	0.440	0.0686	1.00	0.0686	1.100	0.0754	10.7
6	15:38	6.00	0.6	1.100	0.6	0.440	0.0702	1.00	0.0702	1.100	0.0772	10.9
7	15:39	7.00	0.6	1.100	0.6	0.440	0.0748	1.00	0.0748	1.100	0.0823	11.6
8	15:40	8.00	0.6	1.200	0.6	0.480	0.0627	1.00	0.0627	1.200	0.0752	10.6
9	15:41	9.00	0.6	1.100	0.6	0.440	0.0656	1.00	0.0656	1.100	0.0722	10.2
10	15:42	10.00	0.6	1.200	0.6	0.480	0.0482	1.00	0.0482	1.200	0.0579	8.2
11	15:43	11.00	0.6	1.100	0.6	0.440	0.0407	1.00	0.0407	1.100	0.0448	6.3
12	15:44	12.00	0.6	1.000	0.6	0.400	0.0561	1.00	0.0561	1.000	0.0561	7.9
13	15:45	13.00	0.6	1.000	0.6	0.400	0.0531	1.00	0.0531	1.000	0.0531	7.5
14	15:46	14.00	0.6	1.000	0.6	0.400	0.0361	1.00	0.0361	1.000	0.0361	5.1
15	15:47	15.00	0.6	0.900	0.6	0.360	-0.0010	1.00	-0.0010	0.900	-0.0009	-0.1
16	15:48	16.00	0.6	0.700	0.6	0.280	0.0098	1.00	0.0098	0.700	0.0069	1.0
17	15:49	17.00	0.6	0.700	0.6	0.280	-0.0115	1.00	-0.0115	0.700	-0.0080	-1.1
18	15:49	18.00	None	0.000	0.0	0.0	0.0000	1.00	0.0000	0.000	0.0000	0.0

Rows in italics indicate a QC warning. See the Quality Control page of this report for more information.

Figure 8 Discharge Measurement Summary TG-1

Discharge Measurement Summary

Date Generated: Wed Dec 18 2019

File Information				Site Details								
File Name	URC1217.WAD			Site Name	URC121719							
Start Date and Time	2019/12/17 13:35:38			Operator(s)	ZMM							
System Information				Units (English Units)		Discharge Uncertainty						
Sensor Type	FlowTracker			Distance	ft		Category	ISO	Stats			
Serial #	P4709			Velocity	ft/s		Accuracy	1.0%	1.0%			
CPU Firmware Version	3.9			Area	ft^2		Depth	0.7%	3.1%			
Software Ver	2.30			Discharge	cfs		Velocity	2.8%	8.6%			
Mounting Correction	0.0%											
Summary Averaging Int. 40 # Stations 13 Start Edge LEW Total Width 6.000 Mean SNR 40.9 dB Total Area 2.800 Mean Temp 40.70 °F Mean Depth 0.467 Disch. Equation Mid-Section Mean Velocity 0.1569 Total Discharge 0.4393												
Supplemental Data												
#	Time	Location	Gauge Height	Rated Flow	Comments							
1	Tue Dec 17 13:36:53 CST 2019	1.000	11.000									
Measurement Results												
St	Clock	Loc	Method	Depth	%Dep	MeasD	Vel	CorrFact	MeanV	Area	Flow	%Q
0	13:35	0.00	None	0.000	0.0	0.0	0.0000	1.00	0.0000	0.000	0.0000	0.0
<i>1</i>	<i>13:35</i>	<i>0.50</i>	<i>0.6</i>	<i>0.300</i>	<i>0.6</i>	<i>0.120</i>	<i>-0.0558</i>	<i>1.00</i>	<i>-0.0558</i>	<i>0.150</i>	<i>-0.0084</i>	<i>-1.9</i>
<i>2</i>	<i>13:36</i>	<i>1.00</i>	<i>0.6</i>	<i>0.500</i>	<i>0.6</i>	<i>0.200</i>	<i>-0.0449</i>	<i>1.00</i>	<i>-0.0449</i>	<i>0.250</i>	<i>-0.0112</i>	<i>-2.6</i>
<i>3</i>	<i>13:38</i>	<i>1.50</i>	<i>0.6</i>	<i>0.600</i>	<i>0.6</i>	<i>0.240</i>	<i>-0.0479</i>	<i>1.00</i>	<i>-0.0479</i>	<i>0.300</i>	<i>-0.0144</i>	<i>-3.3</i>
4	13:39	2.00	0.6	0.700	0.6	0.280	0.0174	1.00	0.0174	0.350	0.0061	1.4
5	13:39	2.50	0.6	0.700	0.6	0.280	0.2087	1.00	0.2087	0.350	0.0730	16.6
6	13:41	3.00	0.6	0.600	0.6	0.240	0.3681	1.00	0.3681	0.300	0.1104	25.1
7	13:42	3.50	0.6	0.600	0.6	0.240	0.4534	1.00	0.4534	0.300	0.1360	31.0
8	13:43	4.00	0.6	0.500	0.6	0.200	0.2959	1.00	0.2959	0.250	0.0740	16.8
9	13:44	4.50	0.6	0.400	0.6	0.160	0.2402	1.00	0.2402	0.200	0.0480	10.9
10	13:45	5.00	0.6	0.400	0.6	0.160	0.1411	1.00	0.1411	0.200	0.0282	6.4
11	13:46	5.50	0.6	0.300	0.6	0.120	-0.0171	1.00	-0.0171	0.150	-0.0026	-0.6
12	13:46	6.00	None	0.000	0.0	0.0	0.0000	1.00	0.0000	0.000	0.0000	0.0

Rows in italics indicate a QC warning. See the Quality Control page of this report for more information.

Figure 9 Discharge Measurement Summary URC-2

Discharge Measurement Summary

Date Generated: Wed Dec 18 2019

File Information		Site Details	
File Name	WC121719.WAD	Site Name	WC121719
Start Date and Time	2019/12/17 14:15:58	Operator(s)	ZMM

System Information		Units (English Units)		Discharge Uncertainty		
Sensor Type	FlowTracker	Distance	ft	Category	ISO	Stats
Serial #	P4709	Velocity	ft/s	Accuracy	1.0%	1.0%
CPU Firmware Version	3.9	Area	ft ²	Depth	0.6%	7.3%
Software Ver	2.30	Discharge	cfs	Velocity	2.7%	29.6%
Mounting Correction	0.0%			Width	0.2%	0.2%
				Method	3.2%	-
				# Stations	3.9%	-
				Overall	5.8%	30.5%

Summary			
Averaging Int.	40	# Stations	13
Start Edge	LEW	Total Width	7.000
Mean SNR	30.6 dB	Total Area	1.950
Mean Temp	42.38 °F	Mean Depth	0.279
Disch. Equation	Mid-Section	Mean Velocity	0.0389
		Total Discharge	0.0758

Supplemental Data					
#	Time	Location	Gauge Height	Rated Flow	Comments
1	Tue Dec 17 14:26:19 CST 2019	5.000	7.730		

Measurement Results												
St	Clock	Loc	Method	Depth	%Dep	MeasD	Vel	CorrFact	MeanV	Area	Flow	%Q
0	14:15	0.00	None	0.000	0.0	0.0	0.0000	1.00	0.0000	0.000	0.0000	0.0
1	14:15	1.50	0.6	0.200	0.6	0.080	0.0705	1.00	0.0705	0.200	0.0141	18.6
2	14:17	2.00	0.6	0.200	0.6	0.080	0.1516	1.00	0.1516	0.100	0.0152	20.0
3	14:18	2.50	0.6	0.200	0.6	0.080	0.1437	1.00	0.1437	0.100	0.0144	19.0
4	14:19	3.00	0.6	0.400	0.6	0.160	-0.0003	1.00	-0.0003	0.200	-0.0001	-0.1
5	14:23	3.50	0.6	0.400	0.6	0.160	0.0279	1.00	0.0279	0.200	0.0056	7.4
6	14:24	4.00	0.6	0.400	0.6	0.160	0.0535	1.00	0.0535	0.200	0.0107	14.1
7	14:25	4.50	0.6	0.400	0.6	0.160	0.0614	1.00	0.0614	0.200	0.0123	16.2
8	14:26	5.00	0.6	0.400	0.6	0.160	0.0194	1.00	0.0194	0.200	0.0039	5.1
9	14:28	5.50	0.6	0.400	0.6	0.160	0.0351	1.00	0.0351	0.200	0.0070	9.3
10	14:28	6.00	0.6	0.400	0.6	0.160	-0.0282	1.00	-0.0282	0.200	-0.0056	-7.4
11	14:30	6.50	0.6	0.300	0.6	0.120	-0.0108	1.00	-0.0108	0.150	-0.0016	-2.1
12	14:30	7.00	None	0.000	0.0	0.0	0.0000	1.00	0.0000	0.000	0.0000	0.0

Rows in italics indicate a QC warning. See the Quality Control page of this report for more information.

Figure 10 Discharge Measurement Summary WC-1

Period Selected: 2019-12-01 00:00 - 2019-12-31 23:59

UTC Offset: -06:00

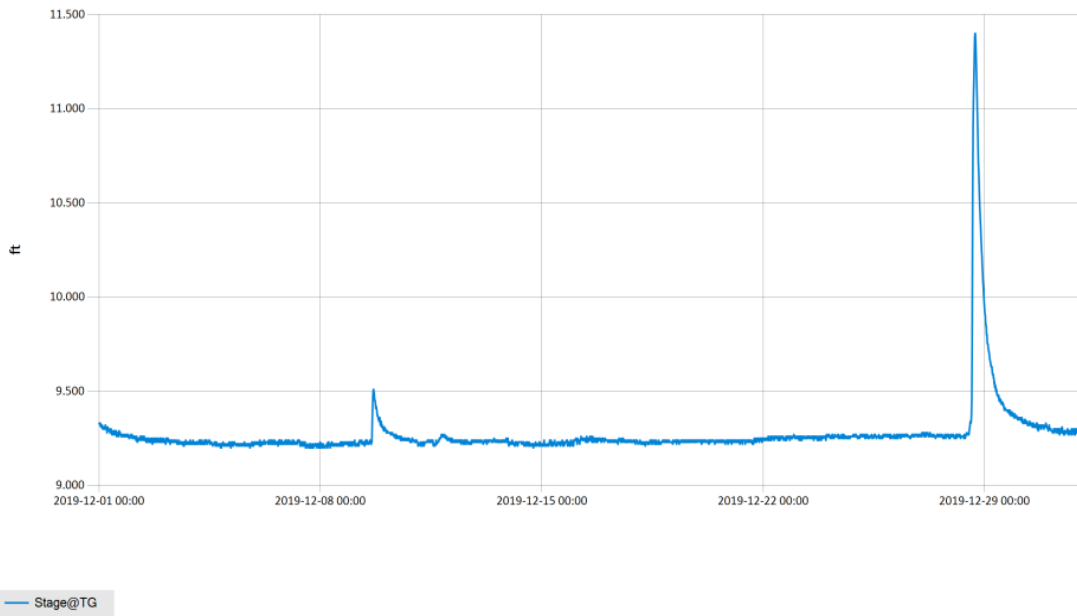


Figure 11 Monthly Hydrograph TG-1

Period Selected: 2019-12-01 00:00 - 2019-12-31 23:59

UTC Offset: -06:00

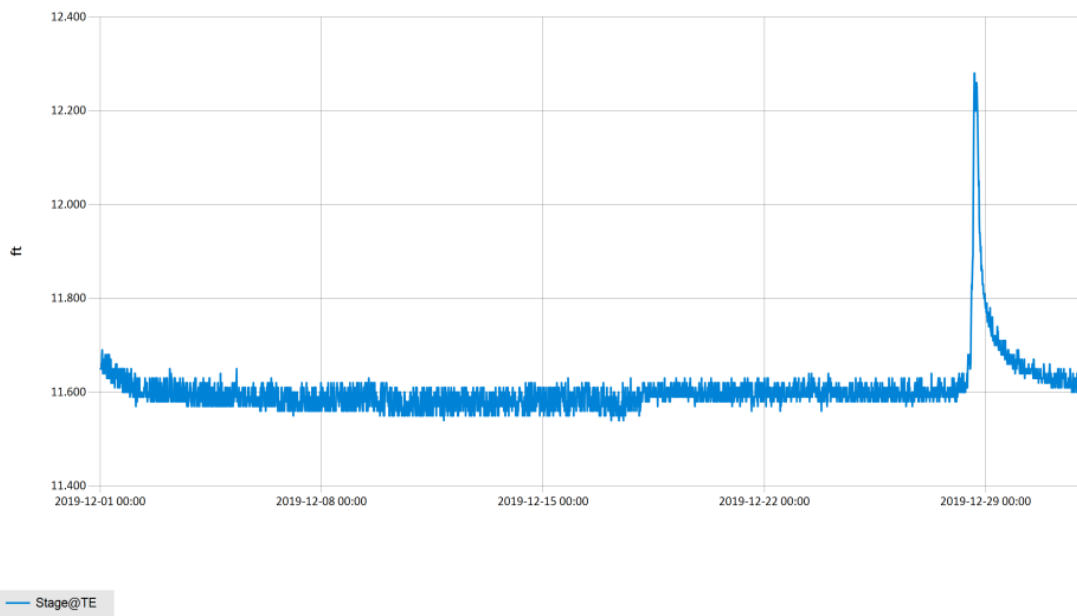
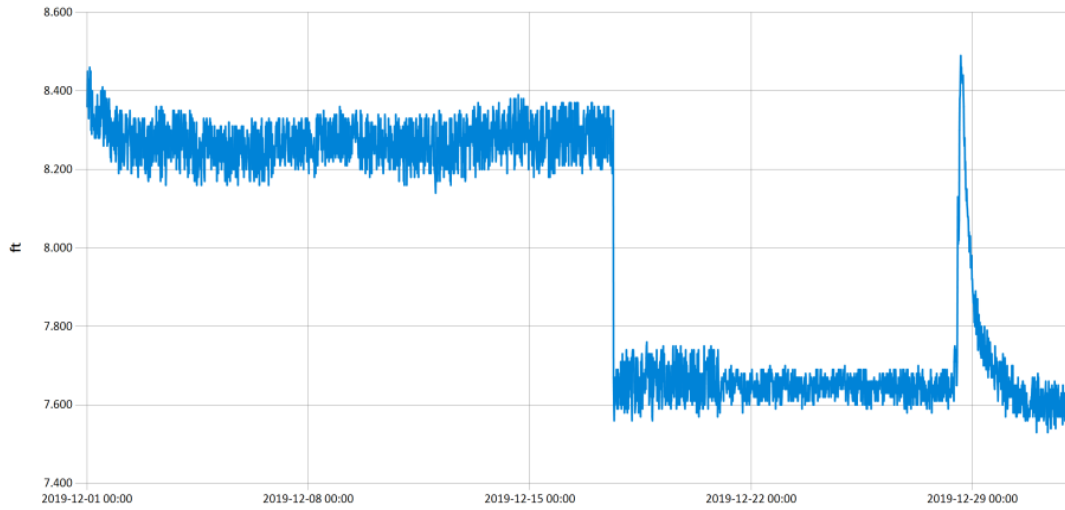


Figure 12 Monthly Hydrograph TE-1

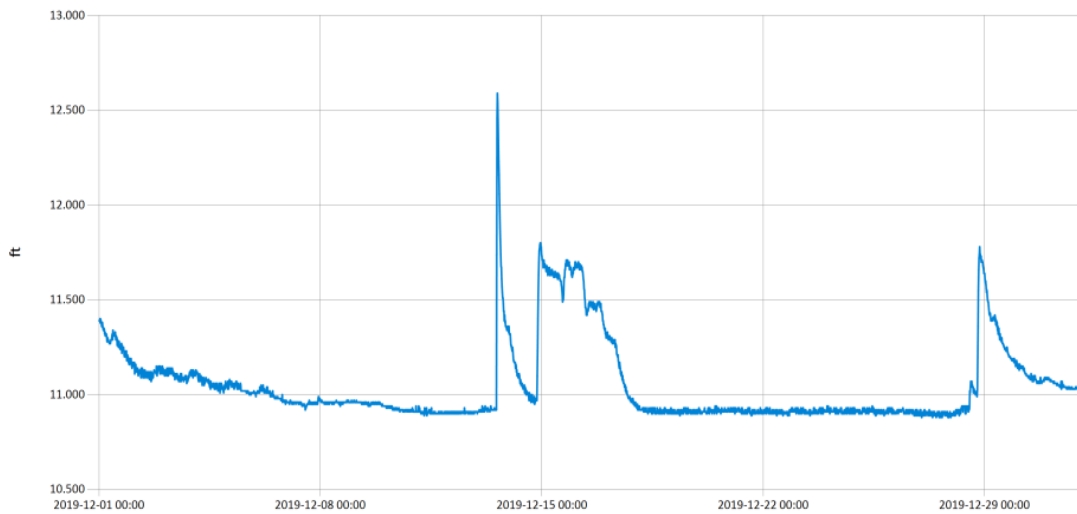
Period Selected: 2019-12-01 00:00 - 2019-12-31 23:59 UTC Offs et: -06:00



— Stage@WC

Figure 13 Monthly Hydrograph WC-1

Period Selected: 2019-12-01 00:00 - 2019-12-31 23:59 UTC Offs et: -06:00

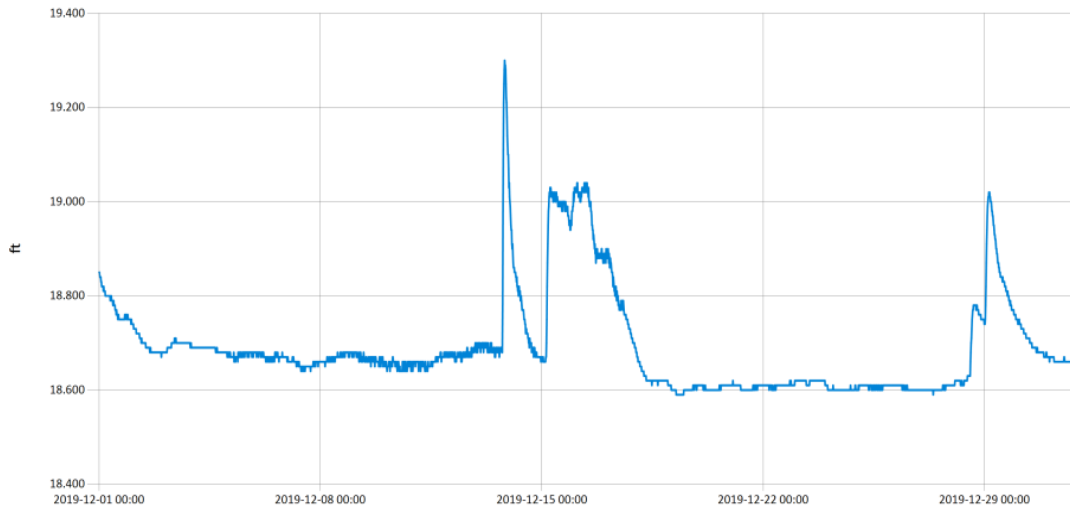


— Stage@URC

Figure 14 Monthly Hydrograph URC-2

Period Selected: 2019-12-01 00:00 - 2019-12-31 23:59

UTC Offs et: -06:00

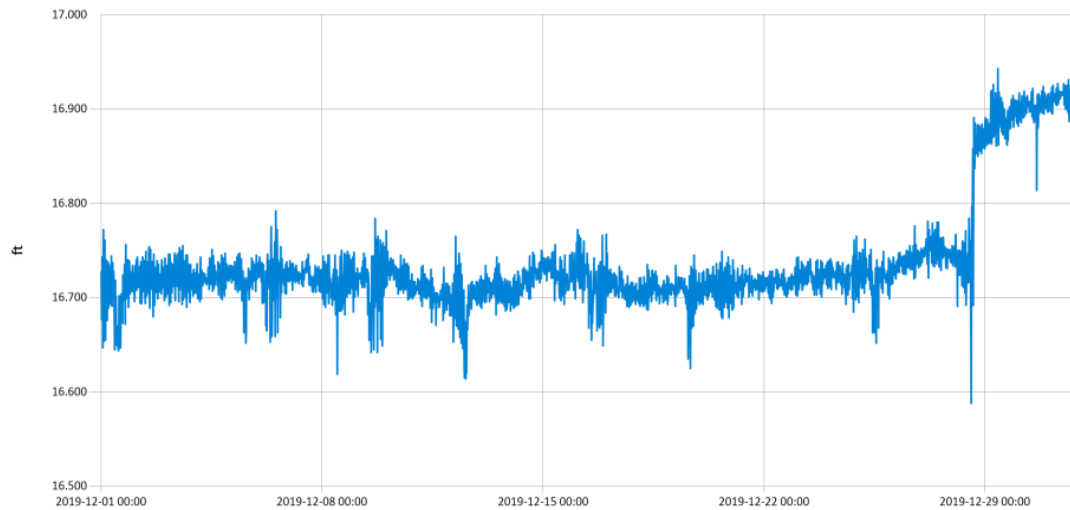


— Stage@LRC

Figure 15 Monthly Hydrograph LRC-1

Period Selected: 2019-12-01 00:00 - 2019-12-31 23:59

UTC Offs et: -06:00

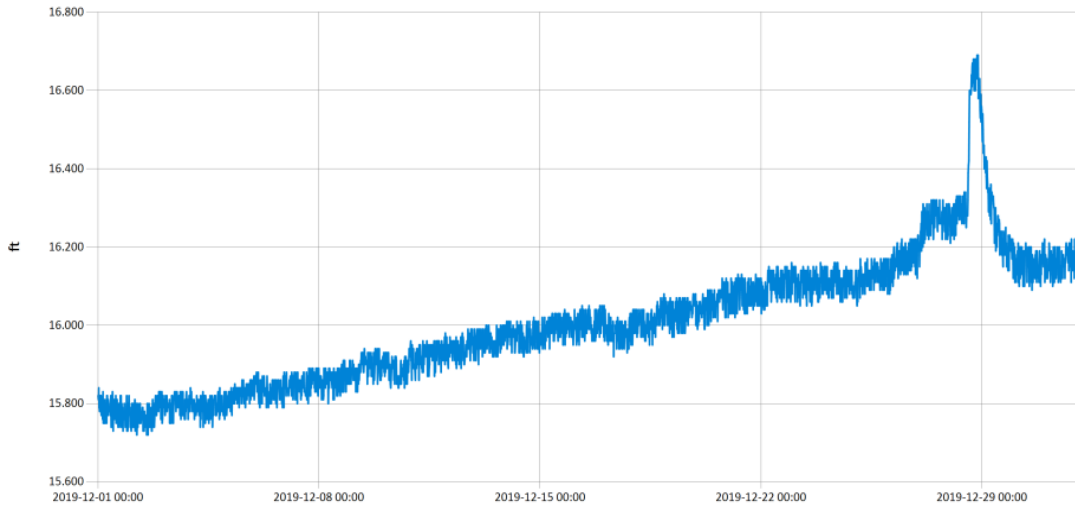


— Stage@LDB

Figure 16 Monthly Hydrograph LDB-1

Period Selected: 2019-12-01 00:00 - 2019-12-31 23:59

UTC Offs et: -06:00

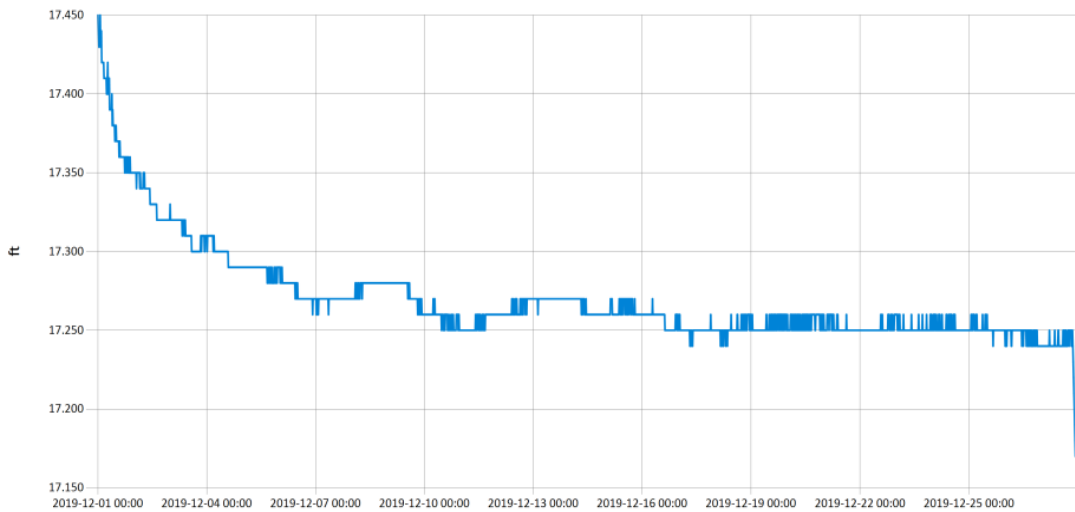


— Stage@JB

Figure 17 Monthly Hydrograph JB-1

Period Selected: 2019-12-01 00:00 - 2019-12-31 23:59

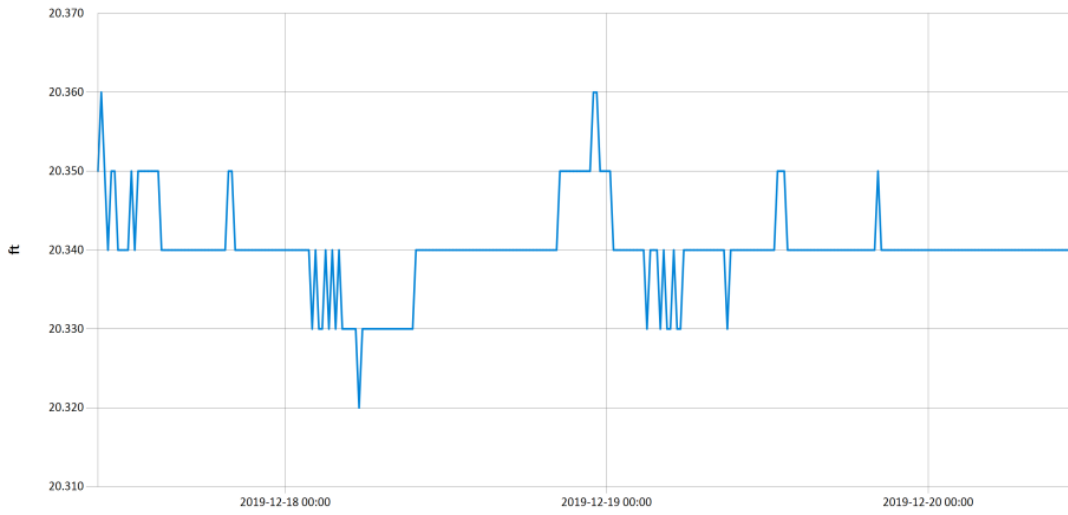
UTC Offs et: -06:00



— Stage@UDB

Figure 18 Monthly Hydrograph UDB-1

Period Selected: 2019-12-01 00:00 - 2019-12-31 23:59 UTC Offs et: -06:00



— Stage@CC

Figure 19 Monthly Hydrograph CC-1

MESONET CLIMATOLOGICAL DATA SUMMARY
 (NRMN) Norman
 Latitude: 35-14-09

December 2019
 Nearest City: 2.1 NW Norman
 Longitude: 97-27-53

Time Zone: Midnight-Midnight CST
 County: Cleveland
 Elevation: 1171 feet

DAY	TEMPERATURE (°F)				DEG DAYS		HUMIDITY (%)			RAIN (in)		PRESSURE (in)		WIND SPEED (mph)			SOLAR (MJ/m ²)	4" SOIL TEMPERATURES			
	MAX	MIN	AVG	DEWPT	HDD	CDD	MAX	MIN	AVG		STN	MSL	DIR	AVG	MAX		SOD	BARE	MAX	MIN	
1	51	35	41.4	22.5	22	0	58	35	47	0.00	28.84	30.09	NW	16.4	34.9	12.62	46.1	45.1	49	42	
2	51	28	39.9	24.0	25	0	84	34	55	0.00	28.95	30.21	SSE	6.0	18.6	9.36	45.2	42.4	47	39	
3	62	36	46.1	30.4	16	0	82	29	56	0.00	28.72	29.97	S	6.2	17.2	11.62	46.0	43.4	49	39	
4	64	31	49.4	33.1	18	0	90	31	57	0.00	28.79	30.04	SSE	4.0	11.6	8.81	46.1	44.3	49	38	
5	71	49	57.6	39.2	5	0	75	36	51	0.00	28.62	29.87	SSE	8.3	19.9	11.51	49.2	49.0	54	45	
6	55	35	44.7	34.3	20	0	78	55	67	0.00	28.99	30.25	N	12.8	33.6	11.23	48.9	47.4	50	44	
7	60	28	43.8	28.4	21	0	93	22	61	0.00	28.97	30.22	SSE	5.1	19.5	11.06	46.6	43.9	49	39	
8	67	46	55.4	44.3	9	0	84	45	68	0.00	28.54	29.78	S	10.7	26.0	6.31	48.5	47.2	51	44	
9	59	33	45.4	30.6	19	0	74	46	56	0.00	28.62	29.87	N	13.9	34.6	3.86	48.8	46.3	49	41	
10	47	28	36.0	14.2	27	0	62	23	42	0.00	29.06	30.32	NNE	4.8	16.3	10.61	45.5	41.4	47	38	
11	54	27	39.8	26.7	24	0	81	43	60	0.00	29.13	30.39	S	8.7	21.6	11.79	44.1	41.1	46	38	
12	56	38	45.7	33.0	18	0	77	43	62	0.00	28.88	30.13	S	9.7	25.8	11.81	45.5	43.3	48	40	
13	60	32	44.7	35.9	19	0	97	42	74	0.00	28.64	29.88	W	2.5	10.8	10.77	46.2	44.9	51	40	
14	50	34	41.2	32.3	23	0	91	50	71	0.00	28.63	29.87	NE	6.2	14.8	5.30	45.6	43.3	47	41	
15	38	32	34.4	33.1	30	0	98	90	95	0.02	28.61	29.85	NNW	9.0	23.3	1.78	44.4	40.8	42	40	
16	33	26	30.2	27.1	35	0	98	80	89	0.00	28.85	30.10	NNW	14.1	29.0	2.18	42.7	38.5	40	37	
17	48	19	31.8	21.8	31	0	94	35	70	0.00	29.11	30.37	NW	6.4	17.7	11.98	41.2	37.5	41	35	
18	57	23	38.2	15.9	25	0	78	16	45	0.00	29.07	30.33	SW	3.9	12.1	12.16	40.2	37.6	42	34	
19	57	30	42.7	17.0	22	0	63	17	38	0.00	29.00	30.25	S	8.2	24.5	11.59	40.8	38.6	43	35	
20	51	39	43.3	30.2	20	0	88	44	61	0.00	29.01	30.26	SSE	8.5	18.9	5.80	42.5	40.8	44	38	
21	44	40	42.4	39.8	23	0	98	84	91	0.00	29.07	30.33	SSE	3.4	9.3	1.73	44.4	43.4	44	43	
22	51	30	39.1	36.5	24	0	100	60	91	0.00	28.99	30.24	SW	4.4	12.6	7.64	44.8	43.8	48	41	
23	62	24	44.7	33.1	22	0	100	35	69	0.01	28.83	30.08	SSE	6.0	17.8	10.04	43.4	42.4	48	37	
24	69	39	53.9	34.3	11	0	80	24	51	0.00	28.69	29.94	SSE	9.1	21.6	11.26	45.6	46.1	51	41	
25	71	48	57.9	40.1	5	0	80	31	54	0.00	28.61	29.85	S	10.5	26.2	11.32	47.7	49.6	55	45	
26	67	40	51.2	41.7	12	0	100	28	75	0.00	28.78	30.03	S	5.8	16.1	8.32	49.2	50.9	55	48	
27	55	37	45.2	40.3	19	0	94	76	83	0.02	28.82	30.07	ENE	7.3	17.0	3.64	48.0	48.3	50	47	
28	60	47	56.3	54.1	12	0	97	86	92	0.53	28.46	29.70	SSE	11.1	33.0	0.92	50.8	51.7	54	49	
29	47	33	39.7	30.7	25	0	92	45	72	0.00	28.59	29.83	WNW	11.1	27.2	9.94	48.3	45.7	50	42	
30	49	30	37.0	22.6	26	0	83	31	59	0.00	28.84	30.09	WNW	10.3	28.5	12.29	44.7	40.8	45	38	
31	52	26	38.2	19.7	26	0	79	20	52	0.00	28.90	30.16	WNW	6.2	17.1	12.48	42.6	39.9	45	37	
	55	34	43.8	31.2	<- Monthly Averages ->						28.83	30.08	SSE	8.1	34.9	8.77	45.6	43.9	48	41	
Temperature - Highest: 71 Lowest: 19					Degree Days - Total HDD: 635 Total CDD: 0					Number of Days With: Tmax ≥ 90: 0 Rainfall ≥ 0.01 inch: 4 Tmax ≤ 32: 0 Rainfall ≥ 0.10 inch: 1 Tmin ≤ 32: 15 Avg Wind Speed ≥ 10 mph: 9 Tmin ≤ 0: 0 Max Wind Speed ≥ 30 mph: 4											
Rainfall: Monthly Total: 0.58 in. Greatest 24 Hr: 0.53 in.					Humidity - Highest: 100 Lowest: 16																

Figure 20 December Mesonet Data