

---

**Lake Thunderbird TMDL Monitoring  
Plan Implementation: Sample Year  
(SY) 2023- April Report**

---



**OKLAHOMA**  
**Water Resources Board**

# Lake Thunderbird TMDL Monitoring Plan Implementation:

## April 2023 Monitoring Report

---

Oklahoma Water Resources Board  
Water Quality Programs Division  
Monitoring and Assessment Section  
3800 N. Classen, Oklahoma City, Oklahoma 73118  
405-530-8800

### Contact

Sarah Dexter, Project Leader, [sarah.dexter@owrb.ok.gov](mailto:sarah.dexter@owrb.ok.gov)  
Lance Phillips, Streams Program Manager, [lance.phillips@owrb.ok.gov](mailto:lance.phillips@owrb.ok.gov)  
Bill Cauthron, Monitoring Coordinator, [bill.cauthron@owrb.ok.gov](mailto:bill.cauthron@owrb.ok.gov)

---

---

## TABLE OF CONTENTS

TABLE OF CONTENTS .....	3
LIST OF TABLES.....	3
LIST OF FIGURES .....	3
SUMMARY OF APRIL SAMPLING.....	4
RESULTS .....	4

## LIST OF TABLES

TABLE 1 FIELD DATA FORM .....	5
TABLE 2 LABORATORY ANALYSIS SUMMARY.....	6
TABLE 3 QA/QC DATA WHERE THE ASTERISK DENOTES RPD2 .....	6
TABLE 4 STATION DISCHARGE SUMMARY.....	7

## LIST OF FIGURES

FIGURE 1 MONITORING STATION MAP .....	4
FIGURE 2 DISCHARGE MEASUREMENT SUMMARY CC-1 .....	8
FIGURE 3 DISCHARGE MEASUREMENT SUMMARY LRC-1 .....	9
FIGURE 4 DISCHARGE MEASUREMENT SUMMARY JB-1 .....	10
FIGURE 5 MONTHLY HYDROGRAPH TG-1 .....	11
FIGURE 6 MONTHLY HYDROGRAPH TE-1 .....	11
FIGURE 7 MONTHLY HYDROGRAPH WC-1.....	12
FIGURE 8 MONTHLY HYDROGRAPH URC-2 .....	12
FIGURE 9 MONTHLY HYDROGRAPH LDB-1 .....	13
FIGURE 10 MONTHLY HYDROGRAPH CC-1.....	13
FIGURE 11 MONTHLY HYDROGRAPH UDB-1 .....	14
FIGURE 12 APRIL MESONET DATA .....	15

## SUMMARY OF APRIL SAMPLING

Sampling for April 2023 occurred during base flow conditions on the eleventh. Water samples were collected at nine locations and discharge was measured at three locations. Two samples were collected at JB-1; one on the upstream side of the road, and one on the downstream side of the road where the channel constricts. Samples were not collected at LT-1, since this station will be relocated to a different location later this year. Mesonet shows no precipitation on the eleventh, in the 72 hours prior to sampling, or in the 72 hours after the sampling event. The total rainfall amount in Norman for the month of April was 3.87 inches. All water level gauges were operational for the month, except for LRC-1 due to equipment malfunction, and the equipment at JB-1 will be reinstalled later this year.

## RESULTS

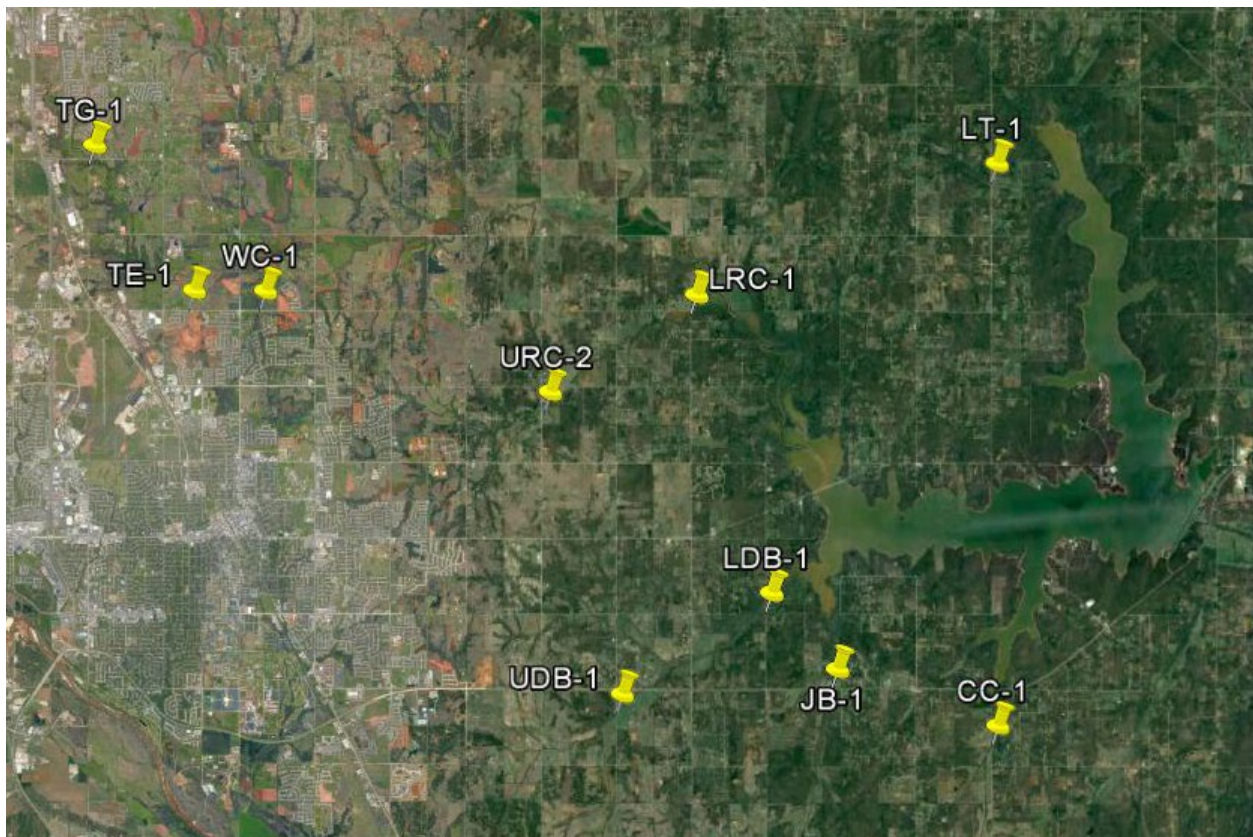


Figure 1 Monitoring Station Map

Monitoring Location ID	Monitoring Location Name	Date	Time	Field Crew	Water Temperature (°C)	Dissolved Oxygen (DO) (mg/L)	pH	Specific Conductance (µS/cm)	Turbidity (NTU)	Notes
CC-1	Clear Creek	4/11/2023	9:13	SD	14.2	7.98	7.68	660	6	Used RP4; orifice may have been slightly clogged - purged and cleaned
JB-1	Jim Blue Creek	4/11/2023	9:30	SD	17.3	14.65	8.03	866	12	Barely connected on downstream side; flow taken on upstream side; no gauge; two samples collected - one downstream, one upstream
LDB-1	Lower Dave Blue Creek	4/11/2023	11:01	SD	16.5	8.09	7.98	901	39	Visually slightly higher than last month
LRC-1	Lower Rock Creek	4/11/2023	11:27	SD	16.5	9.39	7.92	707	10	Lots of algae growth along the banks
LT-1	Lake Laterals	4/11/2023	11:15	SD	N/A	N/A	N/A	N/A	N/A	Site not sampled; planning to relocate this location
TE-1	Little River Tributary	4/11/2023	14:02	SD	21.7	10.03	7.86	1058	23	Stage similar to last month so no flow taken; beaver dam still visible upstream of sampling location
TG-1	Little River	4/11/2023	14:23	SD	21.4	13.82	8.11	1185	2	Good amount of algae. Flow slowed upstream, constricted downstream of bridge
UDB-1	Upper Dave Blue Creek	4/11/2023	8:34	SD	14.9	7.79	7.82	908	8	Similar stage as last month
URC-2	Upper Rock Creek	4/11/2023	12:20	SD	17.9	9.06	7.61	698	15	Slightly lower than last month
WC-1	Woodcrest Creek	4/11/2023	13:45	SD	19.6	12.11	7.78	1032	3	Very similar stage to last month's collection; very low water level; algae more present upstream of bridge

Table 1 Field Data Form

Monitoring Location ID	Monitoring Location Name	Nitrate and Nitrite (mg/L)	Kjeldahl Nitrogen (mg/L)	Phosphorus (mg/L)	Total Suspended Solids (mg/L)
CC-1	Clear Creek	<0.05	0.17	0.029	9.0
JB-1	Jim Blue Creek (ds)	<0.05	0.32	0.035	10.0
JB-1	Jim Blue Creek (us)	<0.05	0.28	0.032	7.0
LDB-1	Lower Dave Blue Creek	<0.05	0.42	0.058	54.0
LRC-1	Lower Rock Creek	<0.05	0.39	0.028	12.0
LT-1	Lake Laterals	N/A	N/A	N/A	N/A
TE-1	Little River Tributary	<0.05	0.52	0.036	10.0
TG-1	Little River	<0.05	0.40	0.021	<5.0
UDB-1	Upper Dave Blue Creek	<0.05	0.39	0.018	<5.0
URC-2	Upper Rock Creek	<0.05	0.84	0.057	10.0
WC-1	Woodcrest Creek	<0.05	0.41	0.030	16.0

Table 2 Laboratory Analysis Summary

Monitoring Location Name	Nitrate and Nitrite (mg/L)	Kjeldahl Nitrogen (mg/L)	Phosphorus (mg/L)	Total Suspended Solids (mg/L)
Field Blank	<0.05	<0.10	<0.010	<5.0
Duplicate	<0.05	0.19	0.029	7.0
Duplicate RPD	0%	11.11%	0%	25%*

Table 3 QA/QC Data Where the Asterisk Denotes RPD2

Quality assurance/quality control (QA/QC) of the data includes a field blank and duplicate sample from each collection event and is qualified by the OWRB. Relative Percent Difference (RPD) of the duplicate sample can be categorized into four levels, where Level 1 likely has no QA issues and Level 4 has major QA issues and should be used with caution.

<b>Monitoring Location ID</b>	<b>Monitoring Location Name</b>	<b>Discharge (cfs)</b>	<b>Stream Stage (ft)</b>
CC-1	Clear Creek	0.37	20.58
JB-1	Jim Blue Creek	0.12	N/A
LDB-1	Lower Dave Blue Creek	1.04	15.52
LRC-1	Lower Rock Creek	0.21	5.41
LT-1	Lake Laterals	N/A	N/A
TE-1	Little River Tributary	0.03	11.00
TG-1	Little River	0.71	9.05
UDB-1	Upper Dave Blue Creek	0.34	17.46
URC-2	Upper Rock Creek	0.20	11.13
WC-1	Woodcrest Creek	0.50	7.54

Table 4 Station Discharge Summary

All rated stream discharges are provisional and subject to change.

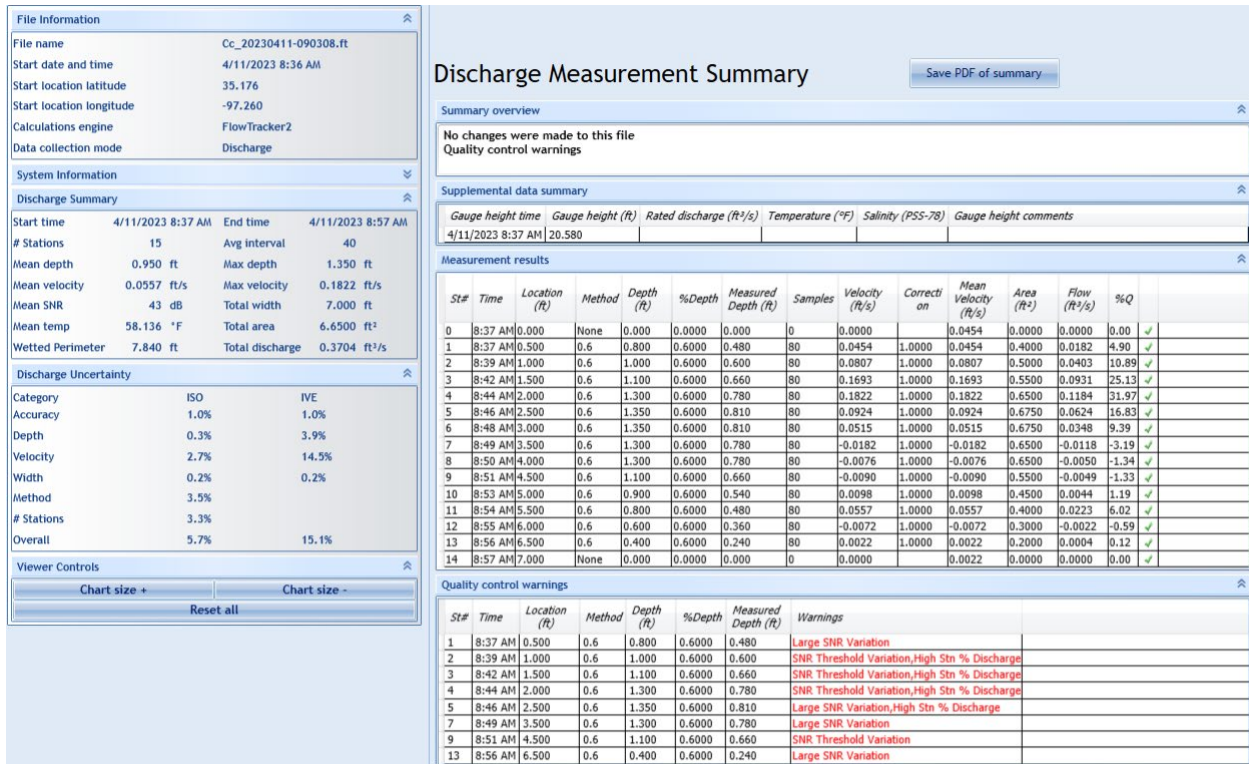


Figure 2 Discharge Measurement Summary CC-1



**File Information**

File name: LRC\_20230411-110847.ft  
 Start date and time: 4/11/2023 10:43 AM  
 Start location latitude: 35.261  
 Start location longitude: -97.335  
 Calculations engine: FlowTracker2  
 Data collection mode: Discharge

**System Information**

**Discharge Summary**

Start time: 4/11/2023 10:45 AM End time: 4/11/2023 11:07 AM  
 # Stations: 20 Avg interval: 40  
 Mean depth: 1.239 ft Max depth: 1.700 ft  
 Mean velocity: 0.0088 ft/s Max velocity: -0.0675 ft/s  
 Mean SNR: 52 dB Total width: 19.000 ft  
 Mean temp: 62.444 °F Total area: 23.5500 ft²  
 Wetted Perimeter: 19.937 ft Total discharge: 0.2072 ft³/s

**Discharge Uncertainty**

Category	ISO	IVE
Accuracy	1.0%	1.0%
Depth	0.4%	5.4%
Velocity	3.9%	53.3%
Width	0.3%	0.3%
Method	5.0%	
# Stations	2.5%	
Overall	6.9%	53.6%

**Viewer Controls**

Chart size + Chart size -  
 Reset all

## Discharge Measurement Summary

Save PDF of summary

### Summary overview

No changes were made to this file  
 Quality control warnings

### Supplemental data summary

Gauge height time	Gauge height (ft)	Rated discharge (ft³/s)	Temperature (°F)	Salinity (PSS-78)	Gauge height comments
4/11/2023 10:48 AM	4.510				

### Measurement results

St#	Time	Location (ft)	Method	Depth (ft)	%Depth	Measured Depth (ft)	Samples	Velocity (ft/s)	Correct on	Mean Velocity (ft/s)	Area (ft²)	Flow (ft³/s)	%Q
0	10:45 AM	0.000	None	0.000	0.0000	0.000	0	0.0000		-0.0675	0.0000	0.000	0.00
1	10:45 AM	1.000	0.6	0.400	0.6000	0.240	80	-0.0675	1.0000	-0.0675	0.4000	-0.0270	-13.02
2	10:47 AM	2.000	0.6	0.700	0.6000	0.420	80	-0.0251	1.0000	-0.0251	0.7000	-0.0176	-8.49
3	10:48 AM	3.000	0.6	0.900	0.6000	0.540	80	0.0083	1.0000	0.0083	0.9000	0.0075	3.61
4	10:50 AM	4.000	0.6	1.000	0.6000	0.600	80	0.0149	1.0000	0.0149	1.0000	0.0149	7.19
5	10:51 AM	5.000	0.6	1.100	0.6000	0.660	80	-0.0053	1.0000	-0.0053	1.1000	-0.0059	-2.83
6	10:52 AM	6.000	0.6	1.250	0.6000	0.750	80	0.0082	1.0000	0.0082	1.2500	0.0102	4.94
7	10:53 AM	7.000	0.6	1.400	0.6000	0.840	80	0.0170	1.0000	0.0170	1.4000	0.0237	11.46
8	10:54 AM	8.000	0.6	1.550	0.6000	0.930	80	0.0126	1.0000	0.0126	1.5500	0.0196	9.44
9	10:55 AM	9.000	0.6	1.500	0.6000	0.900	80	-0.0296	1.0000	-0.0296	1.5000	-0.0444	-21.41
10	10:57 AM	10.000	0.6	1.300	0.6000	0.780	80	0.0175	1.0000	0.0175	1.3000	0.0227	10.96
11	10:58 AM	11.000	0.6	1.350	0.6000	0.810	80	0.0010	1.0000	0.0010	1.3500	0.0013	0.65
12	10:59 AM	12.000	0.6	1.500	0.6000	0.900	80	0.0053	1.0000	0.0053	1.5000	0.0079	3.84
13	11:00 AM	13.000	0.6	1.700	0.6000	1.020	80	-0.0003	1.0000	-0.0003	1.7000	-0.0005	-0.23
14	11:01 AM	14.000	0.6	1.700	0.6000	1.020	80	0.0319	1.0000	0.0319	1.7000	0.0543	26.19
15	11:02 AM	15.000	0.6	1.600	0.6000	0.960	80	0.0319	1.0000	0.0319	1.6000	0.0511	24.67
16	11:04 AM	16.000	0.6	1.700	0.6000	1.020	80	0.0165	1.0000	0.0165	1.7000	0.0280	13.54
17	11:05 AM	17.000	0.6	1.600	0.6000	0.960	80	0.0522	1.0000	0.0522	1.6000	0.0835	40.28
18	11:06 AM	18.000	0.6	1.300	0.6000	0.780	80	-0.0172	1.0000	-0.0172	1.3000	-0.0223	-10.77
19	11:07 AM	19.000	None	0.000	0.0000	0.000	0	0.0000		-0.0172	0.0000	0.0000	0.00

### Quality control warnings

St#	Time	Location (ft)	Method	Depth (ft)	%Depth	Measured Depth (ft)	Warnings
1	10:45 AM	1.000	0.6	0.400	0.6000	0.240	Velocity Angle > QC
5	10:51 AM	5.000	0.6	1.100	0.6000	0.660	Large SNR Variation
7	10:53 AM	7.000	0.6	1.400	0.6000	0.840	High Stn % Discharge
10	10:57 AM	10.000	0.6	1.300	0.6000	0.780	High Stn % Discharge
14	11:01 AM	14.000	0.6	1.700	0.6000	1.020	High Stn % Discharge
15	11:02 AM	15.000	0.6	1.600	0.6000	0.960	Large SNR Variation, High Stn % Discharge
16	11:04 AM	16.000	0.6	1.700	0.6000	1.020	High Stn % Discharge
17	11:05 AM	17.000	0.6	1.600	0.6000	0.960	Large SNR Variation, High Stn % Discharge
19	11:07 AM	19.000	None	0.000	0.0000	0.000	Water Depth > QC

Figure 3 Discharge Measurement Summary LRC-1

**File Information**

File name: Jb\_20230411-094256.ft  
 Start date and time: 4/11/2023 9:25 AM  
 Start location latitude: 35.189  
 Start location longitude: -97.303  
 Calculations engine: FlowTracker2  
 Data collection mode: Discharge

**System Information**

**Discharge Summary**

Start time: 4/11/2023 9:26 AM    End time: 4/11/2023 9:42 AM  
 # Stations: 14    Avg interval: 40  
 Mean depth: 0.489 ft    Max depth: 0.700 ft  
 Mean velocity: 0.0362 ft/s    Max velocity: 0.0921 ft/s  
 Mean SNR: 39 dB    Total width: 7.000 ft  
 Mean temp: 57.206 °F    Total area: 3.4250 ft²  
 Wetted Perimeter: 7.329 ft    Total discharge: 0.1240 ft³/s

**Discharge Uncertainty**

Category	ISO	IVE
Accuracy	1.0%	1.0%
Depth	0.6%	6.3%
Velocity	17.9%	29.6%
Width	0.2%	0.2%
Method	2.9%	
# Stations	3.6%	
Overall	18.5%	30.3%

**Viewer Controls**

Chart size +    Chart size -  
 Reset all

## Discharge Measurement Summary

Save PDF of summary

### Summary overview

No changes were made to this file  
 Quality control warnings

### Measurement results

St#	Time	Location (ft)	Method	Depth (ft)	%Depth	Measured Depth (ft)	Samples	Velocity (ft/s)	Correct on	Mean Velocity (ft/s)	Area (ft²)	Flow (ft³/s)	%Q	
0	9:26 AM	0.000	None	0.000	0.0000	0.000	0	0.0000		0.0222	0.0000	0.0000	0.00	✓
1	9:26 AM	1.000	0.6	0.300	0.6000	0.180	80	0.0222	1.0000	0.0222	0.2250	0.0050	4.03	✓
2	9:28 AM	1.500	0.6	0.500	0.6000	0.300	80	0.0010	1.0000	0.0010	0.2500	0.0003	0.20	✓
3	9:29 AM	2.000	0.6	0.600	0.6000	0.360	80	-0.0018	1.0000	-0.0018	0.3000	-0.0006	-0.45	✓
4	9:30 AM	2.500	0.6	0.600	0.6000	0.360	80	0.0921	1.0000	0.0921	0.3000	0.0276	22.27	✓
5	9:31 AM	3.000	0.6	0.600	0.6000	0.360	80	0.0007	1.0000	0.0007	0.3000	0.0002	0.17	✓
6	9:32 AM	3.500	0.6	0.600	0.6000	0.360	80	0.0422	1.0000	0.0422	0.3000	0.0126	10.20	✓
7	9:33 AM	4.000	0.6	0.600	0.6000	0.360	80	0.0466	1.0000	0.0466	0.3000	0.0140	11.26	✓
8	9:36 AM	4.500	0.6	0.700	0.6000	0.420	80	0.0713	1.0000	0.0713	0.3500	0.0250	20.12	✓
9	9:37 AM	5.000	0.6	0.600	0.6000	0.360	80	0.0301	1.0000	0.0301	0.3000	0.0090	7.28	✓
10	9:39 AM	5.500	0.6	0.600	0.6000	0.360	80	0.0547	1.0000	0.0547	0.3000	0.0164	13.24	✓
11	9:40 AM	6.000	0.6	0.500	0.6000	0.300	80	0.0439	1.0000	0.0439	0.2500	0.0110	8.85	✓
12	9:41 AM	6.500	0.6	0.500	0.6000	0.300	80	0.0140	1.0000	0.0140	0.2500	0.0035	2.82	✓
13	9:42 AM	7.000	None	0.000	0.0000	0.000	0	0.0000		0.0140	0.0000	0.0000	0.00	✓

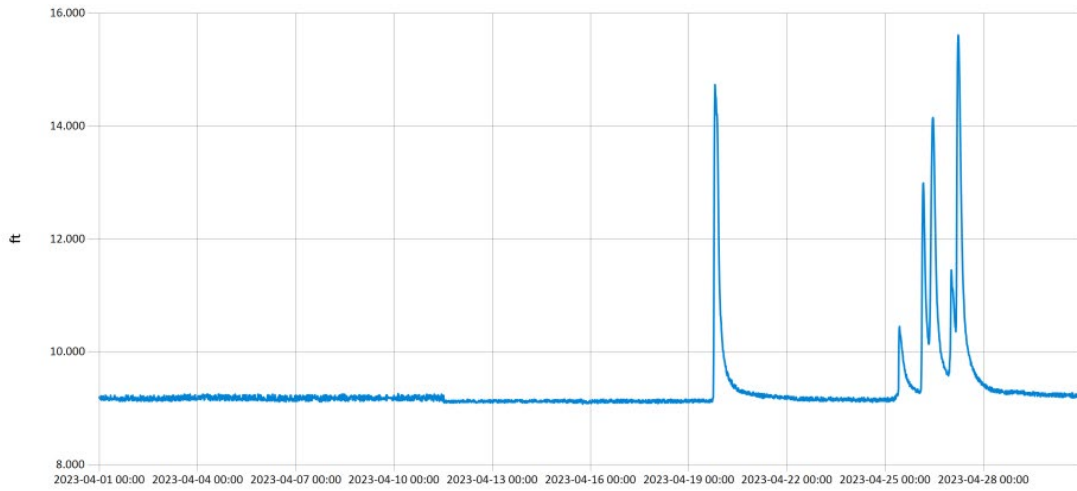
### Quality control warnings

St#	Time	Location (ft)	Method	Depth (ft)	%Depth	Measured Depth (ft)	Warnings
1	9:26 AM	1.000	0.6	0.300	0.6000	0.180	Boundary Interference
2	9:28 AM	1.500	0.6	0.500	0.6000	0.300	Beam SNRs Not Similar,SNR Threshold Variation
3	9:29 AM	2.000	0.6	0.600	0.6000	0.360	Large SNR Variation,SNR Threshold Variation
4	9:30 AM	2.500	0.6	0.600	0.6000	0.360	High Stn % Discharge
5	9:31 AM	3.000	0.6	0.600	0.6000	0.360	Beam SNRs Not Similar,SNR Threshold Variation
6	9:32 AM	3.500	0.6	0.600	0.6000	0.360	Boundary Interference,High Stn % Discharge
7	9:33 AM	4.000	0.6	0.600	0.6000	0.360	High Stn % Discharge
8	9:36 AM	4.500	0.6	0.700	0.6000	0.420	High Stn % Discharge
9	9:37 AM	5.000	0.6	0.600	0.6000	0.360	Large SNR Variation,SNR Threshold Variation
10	9:39 AM	5.500	0.6	0.600	0.6000	0.360	High Stn % Discharge
11	9:40 AM	6.000	0.6	0.500	0.6000	0.300	Boundary Interference,Beam SNRs Not Similar,SNR Threshold Variation
12	9:41 AM	6.500	0.6	0.500	0.6000	0.300	Boundary Interference,Large SNR Variation,SNR Threshold Variation,Standard Error > QC

Figure 4 Discharge Measurement Summary JB-1

Period Selected: 2023-04-01 00:00 - 2023-04-30 23:59

UTC Offset: -06:00

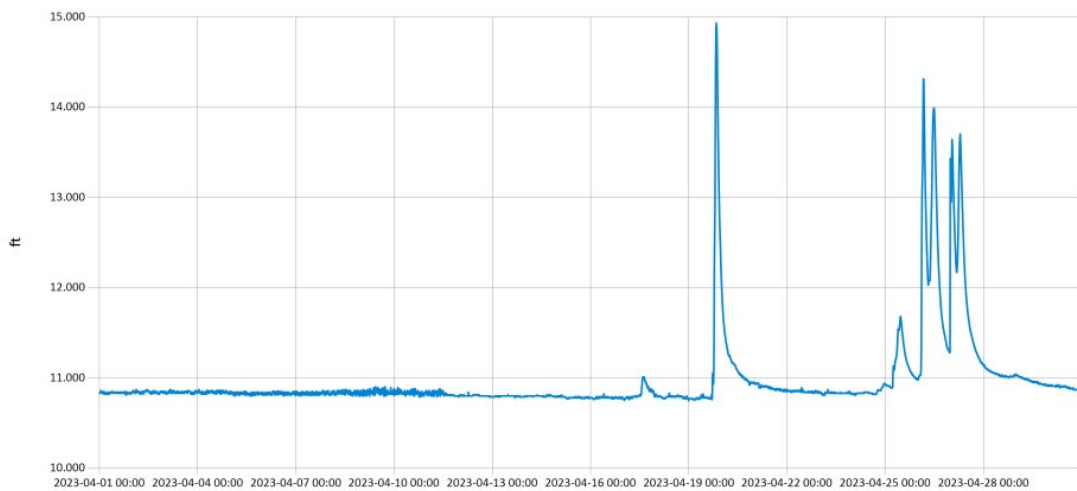


— Stage@TG

Figure 5 Monthly Hydrograph TG-1

Period Selected: 2023-04-01 00:00 - 2023-04-30 23:59

UTC Offset: -06:00

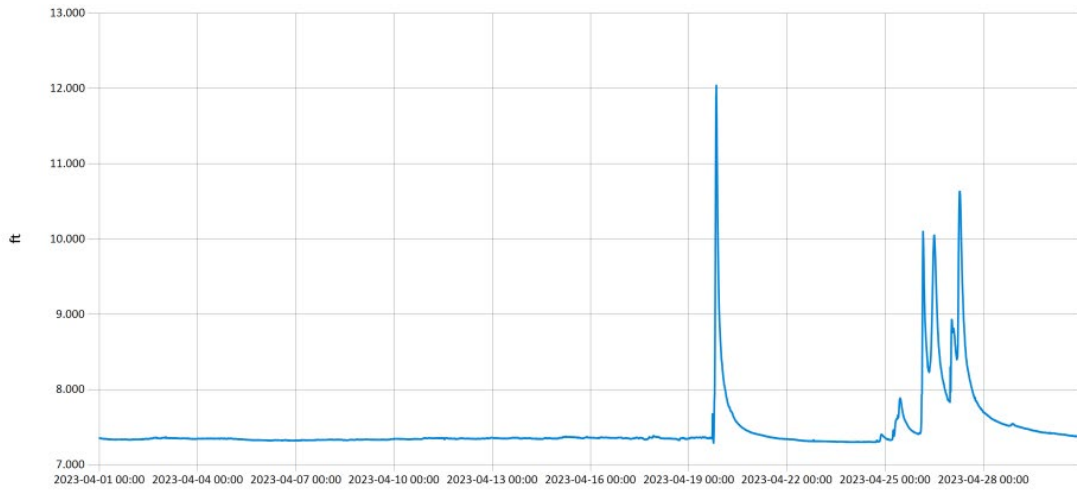


— Stage@TE

Figure 6 Monthly Hydrograph TE-1

Period Selected: 2023-04-01 00:00 - 2023-04-30 23:59

UTC Offset: -06:00

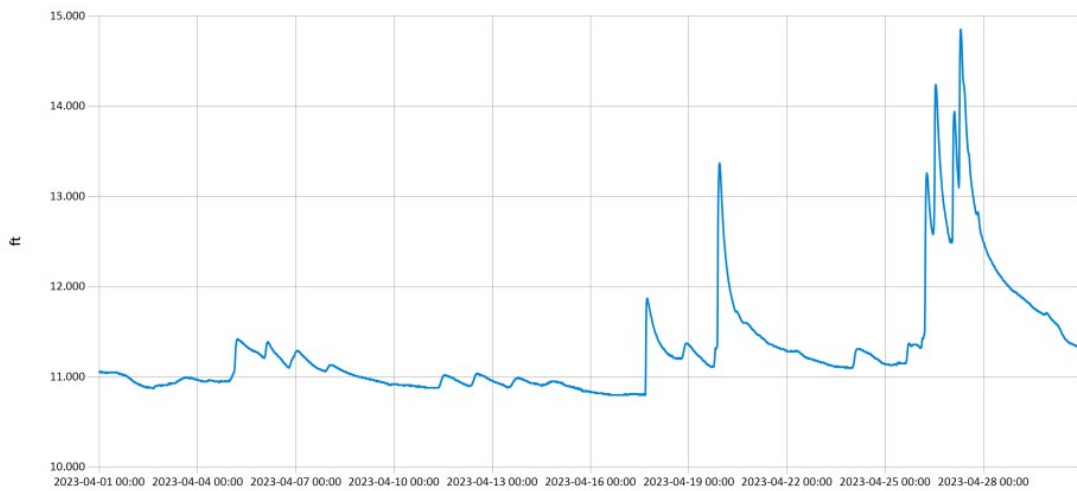


— Stage@WC

Figure 7 Monthly Hydrograph WC-1

Period Selected: 2023-04-01 00:00 - 2023-04-30 23:59

UTC Offset: -06:00

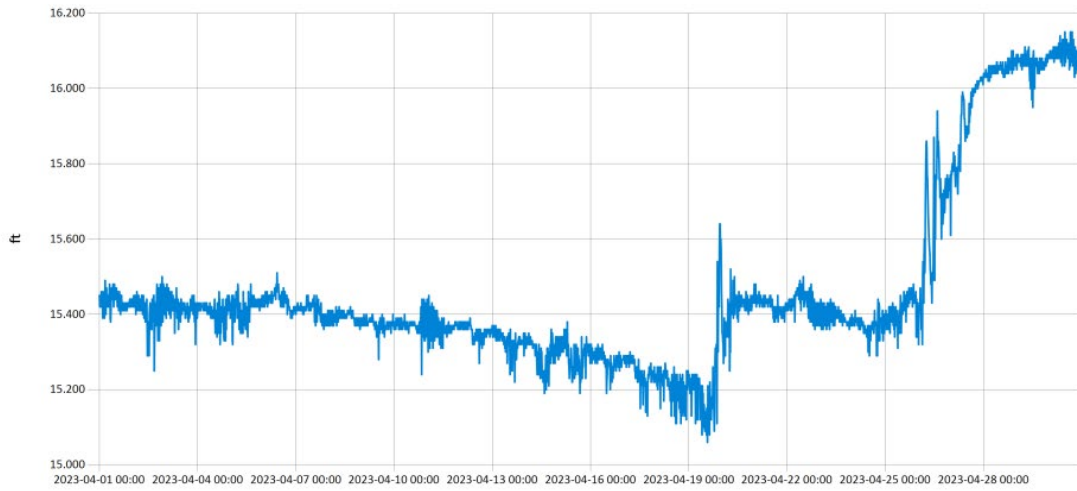


— Stage@URC

Figure 8 Monthly Hydrograph URC-2

Period Selected: 2023-04-01 00:00 - 2023-04-30 23:59

UTC Offset: -06:00

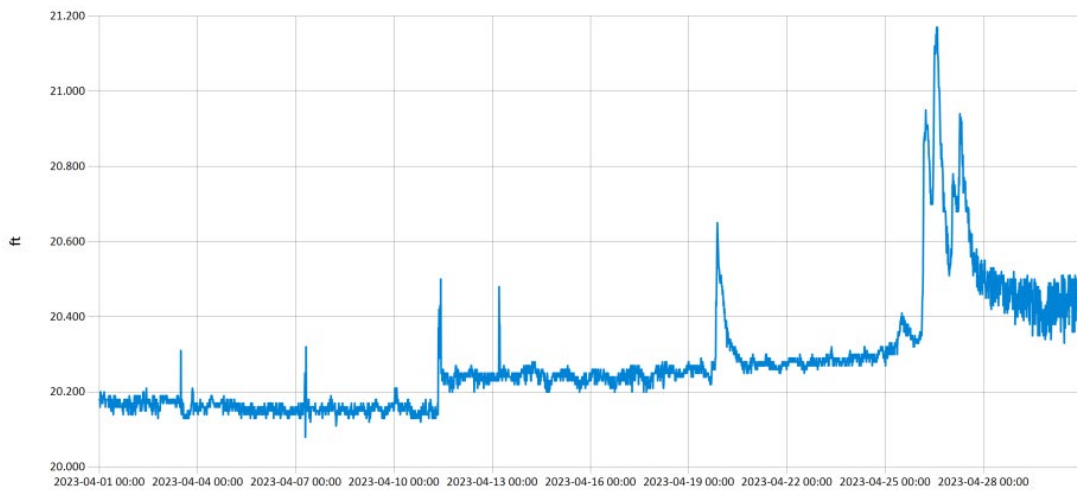


— Stage@LDB

Figure 9 Monthly Hydrograph LDB-1

Period Selected: 2023-04-01 00:00 - 2023-04-30 23:59

UTC Offset: -06:00



— Stage@CC

Figure 10 Monthly Hydrograph CC-1

Period Selected: 2023-04-01 00:00 - 2023-04-30 23:59

UTC Offset: -06:00

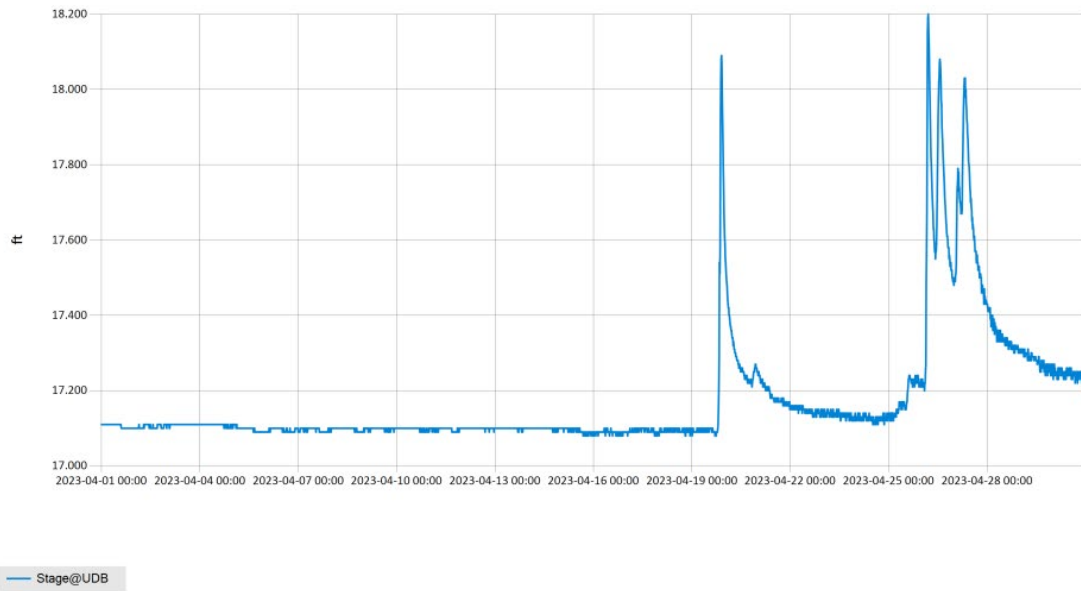


Figure 11 Monthly Hydrograph UDB-1

MESONET CLIMATOLOGICAL DATA SUMMARY				April 2023				Time Zone: Midnight-Midnight CST													
(NRMN) Norman				Nearest City: 2.1 NW Norman				County: Cleveland													
Latitude: 35-14-09				Longitude: 97-27-53				Elevation: 1171 feet													
DAY	TEMPERATURE ( °F )				DEG DAYS		HUMIDITY (%)			RAIN		PRESSURE (in)		WIND SPEED (mph)		SOLAR (MJ/m <sup>2</sup> )	4" SOIL TEMPERATURES				
	MAX	MIN	AVG	DEWPT	HDD	CDD	MAX	MIN	AVG	(in)	STN	MSL	DIR	AVG	MAX		SOD	BARE	MAX	MIN	
1	66	44	55.7	28.1	10	0	48	25	35	0.00	28.88	30.13	NNW	9.1	31.2	23.95	54.3	53.7	61	47	
2	78	50	62.0	45.0	1	0	89	36	55	0.00	28.57	29.81	S	11.5	36.2	14.83	54.5	55.4	62	49	
3	85	58	71.5	49.7	0	6	94	19	55	0.00	28.34	29.58	S	11.7	26.8	24.17	57.7	63.2	72	56	
4	80	69	73.6	65.7	0	9	92	54	77	0.00	28.26	29.49	S	13.8	33.2	11.66	60.7	66.7	70	64	
5	72	38	48.7	27.6	10	0	84	28	45	0.00	28.78	30.03	NNW	13.3	33.8	24.34	58.1	61.5	66	55	
6	62	40	50.4	23.6	14	0	55	19	37	0.00	29.06	30.32	NE	8.9	24.2	19.87	54.8	56.7	64	50	
7	69	37	53.8	24.0	12	0	73	12	37	0.00	29.03	30.28	E	7.6	20.8	24.77	54.4	57.7	67	48	
8	73	42	58.5	30.3	8	0	66	16	37	0.00	28.92	30.17	ESE	4.8	14.6	24.66	55.6	61.3	72	52	
9	73	40	60.1	43.9	8	0	76	41	56	0.00	28.93	30.19	SSE	5.7	17.6	19.97	56.1	62.1	71	53	
10	76	53	64.3	51.1	0	0	94	37	65	0.00	28.98	30.24	SSE	6.9	26.6	20.79	58.9	66.0	75	59	
11	76	54	64.6	48.7	0	0	87	36	59	0.00	28.96	30.21	SSE	8.0	20.8	24.22	60.0	67.1	75	60	
12	77	51	64.4	45.8	1	0	79	32	53	0.00	28.78	30.03	S	8.8	26.1	25.14	60.3	67.0	75	59	
13	78	51	65.9	48.2	0	0	88	32	56	0.00	28.55	29.79	SSE	9.0	22.3	24.97	60.8	67.8	76	60	
14	81	59	69.2	56.3	0	5	85	48	64	0.00	28.42	29.65	S	13.6	33.5	21.14	61.9	69.0	76	63	
15	68	46	59.4	45.0	8	0	94	38	61	0.00	28.67	29.92	NNW	16.7	39.4	21.38	61.7	67.2	71	62	
16	69	37	53.1	29.9	12	0	81	19	46	0.00	28.95	30.21	NW	8.7	28.0	25.55	58.4	62.6	70	55	
17	79	38	62.1	37.6	7	0	86	24	45	0.00	28.73	29.98	S	9.3	30.5	24.82	58.0	63.9	73	54	
18	78	57	66.8	53.1	0	2	83	42	62	0.00	28.53	29.77	S	14.4	39.2	21.09	60.6	67.6	74	61	
19	84*	63*	72.0*	61.7*	0*	9*	92*	48*	71*	1.41*	28.46*	29.70*	S	15.7*	46.0*	NA	62.9*	69.7*	77*	65*	
20	74	55	65.5	43.1	1	0	78	22	47	0.03	28.66	29.91	NNW	13.2	34.7	24.17	63.0	67.2	72	60	
21	69*	47*	58.2*	33.8*	7*	0*	70*	20*	42*	0.00*	28.78*	30.03*	NNE*	5.8*	18.7*	NA	60.5*	60.5*	67*	55*	
22	53	45	48.7	32.0	16	0	79	37	54	0.01	28.86	30.11	NNE	11.1	30.0	12.22	57.8	54.8	59	52	
23	62	39	51.6	31.9	14	0	81	24	51	0.00	28.90	30.15	N	4.5	19.7	25.90	57.4	55.9	64	49	
24	63	39	51.7	39.6	14	0	90	32	67	0.09	28.83	30.08	SSE	6.1	21.5	13.80	56.8	54.7	59	50	
25	54	48	50.2	46.9	14	0	94	74	88	0.36	28.73	29.97	ESE	11.3	23.3	4.54	56.0	54.0	55	53	
26	57	50	52.6	50.7	11	0	97	83	93	1.55	28.69	29.93	E	8.9	41.7	5.14	55.4	54.5	57	53	
27	59	46	53.8	50.3	12	0	97	72	88	0.36	28.60	29.84	NW	6.8	18.6	7.25	56.0	56.6	59	55	
28	61	42	51.4	47.6	14	0	98	70	88	0.06	28.66	29.90	NNW	8.7	26.8	7.54	55.1	55.4	58	52	
29	68	47	57.4	41.8	7	0	85	37	58	0.00	28.70	29.95	NNW	11.5	27.1	26.76	55.3	57.9	65	51	
30	69	45	58.7	40.2	8	0	85	31	53	0.00	28.68	29.93	N	8.0	24.1	23.92	56.9	58.1	63	52	
	70*	48*	59.2*	42.4*	<- Monthly Averages ->							28.73*	29.98*	S	9.8*	46.0*	19.59*	58.0*	61.2*	68*	55*
Temperature - Highest: 85*				Degree Days - Total HDD: 211*				Number of Days With:													
Lowest: 37*				Total CDD: 32*				Tmax ≥ 90: 0*				Rainfall ≥ 0.01 inch: 8*									
Rainfall: Monthly Total: 3.87* in.				Humidity - Highest: 98*				Tmax ≤ 32: 0*				Rainfall ≥ 0.10 inch: 4*									
Greatest 24 Hr: 1.55* in.				Lowest: 12*				Tmin ≤ 32: 0*				Avg Wind Speed ≥ 10 mph: 12*									
								Tmin ≤ 0: 0*				Max Wind Speed ≥ 30 mph: 12*									

© 1993-2023 Oklahoma Climatological Survey and the Oklahoma Mesonet

\* Denotes incomplete record

Figure 12 April Mesonet Data