

Aerial Photography: 2007  
 Coordinate System: Oklahoma State Plane,  
 South Zone  
 Horizontal Datum: NAD 1983  
 Vertical Datum: NAVD 1988

### Legend

- City Boundary
- Existing Drainage Easement
- Stream Centerlines**
- Level 1 and 2 (Detailed)
- Level 3 and 4 (General)

- Floodplains**
- 100-year Baseline
- 100-year Solution

- Buildings in Floodplain**
- 100-year Baseline
- 100-year Solution

### Recommended Solutions

- Road Crossing Upgrade
- Property Buyouts
- Floodwall
- Channel Stabilization
- Channel Improvements
- Storm Sewer Improvements
- Storm Water Detention



## Storm Water Master Plan

### Exhibit 6-9

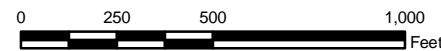
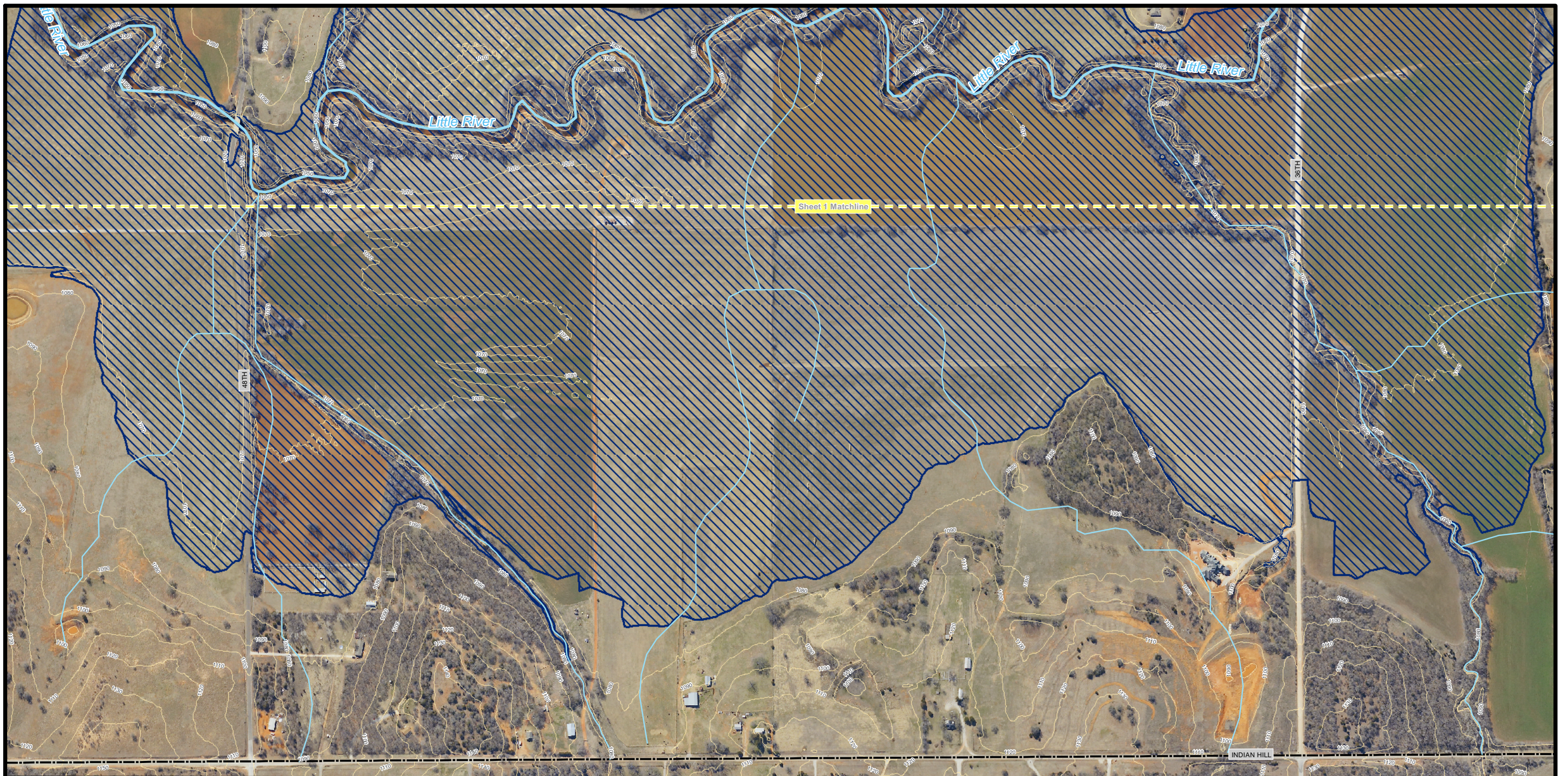
## Baseline Floodplain and Recommended Solutions Overview Little River

Sheet 1 of 6

Job No.: 044194100 | Date: 12-11-08 | Scale: 1 inch = 500 Feet

File: W:\WR\proj\441941\_Norman\Report\Figures\LittleRiver\_6\_x1.mxd





Aerial Photography: 2007  
 Coordinate System: Oklahoma State Plane,  
 South Zone  
 Horizontal Datum: NAD 1983  
 Vertical Datum: NAVD 1988

### Legend

- City Boundary
- Existing Drainage Easement

- Stream Centerlines
- Level 1 and 2 (Detailed)
  - Level 3 and 4 (General)

- Floodplains
- 100-year Baseline
  - 100-year Solution

- Buildings in Floodplain
- 100-year Baseline
  - 100-year Solution

### Recommended Solutions

- Road Crossing Upgrade
- Property Buyouts
- Floodwall
- Channel Stabilization
- Channel Improvements
- Storm Sewer Improvements
- Storm Water Detention



## Storm Water Master Plan

### Exhibit 6-9

## Baseline Floodplain and Recommended Solutions Overview Little River

Sheet 1a of 6

Job No.: 044194100 | Date: 12-11-08 | Scale: 1 inch = 500 Feet

File: W:\WR\proj\441941\_Norman\Report\Figures\LittleRiver\_1.mxd