
***Lake Thunderbird TMDL Monitoring Plan Implementation:
Sample Year (SY) 2017- January Report***



SY2017 Monthly Report

Lake Thunderbird TMDL Monitoring Plan Implementation:

January 2018 Monitoring Report

Oklahoma Water Resources Board
Water Quality Programs Division
Monitoring and Assessment Section
3800 N. Classen, Oklahoma City, Oklahoma 73118
405-530-8800

Contact

Sarah Dexter, Project Leader, sarah.dexter@owrb.ok.gov

Jason Murphy, Project Supervisor, jason.murphy@owrb.ok.gov

Lance Phillips, Streams Program Manager, lance.phillips@owrb.ok.gov

Bill Cauthron, Monitoring Coordinator, bill.cauthron@owrb.ok.gov

TABLE OF CONTENTS

Table of Contents..... 3
List of Tables..... 3
List of Figures 3
Summary of January Water Quality Sampling 4
Results..... 4

LIST OF TABLES

TABLE 1 FIELD DATA FORM 5
TABLE 2 LABORATORY ANALYSIS SUMMARY 6
TABLE 3 QA/QC DATA WHERE SUBSCRIPT 1 DENOTES A LEVEL 3 RPD..... 6
TABLE 4 STATION DISCHARGE SUMMARY 6

LIST OF FIGURES

FIGURE 1 MONITORING STATION MAP 4
FIGURE 2 DISCHARGE SUMMARY CC-1 7
FIGURE 3 DISCHARGE SUMMARY LRC-1..... 8
FIGURE 4 DISCHARGE SUMMARY TG-1 9
FIGURE 5 DISCHARGE SUMMARY WC-1..... 10
FIGURE 6 MONTHLY HYDROGRAPH TE-1 11
FIGURE 7 MONTHLY HYDROGRAPH TG-1..... 11
FIGURE 8 MONTHLY HYDROGRAPH UDB-1 12
FIGURE 9 MONTHLY HYDROGRAPH JB-1 12
FIGURE 10 MONTHLY HYDROGRAPH URC-2 13
FIGURE 11 MONTHLY HYDROGRAPH WC-1..... 13
FIGURE 12 MONTHLY HYDROGRAPH CC-1 14
FIGURE 13 MONTHLY HYDROGRAPH LDB-1 14
FIGURE 14 MONTHLY HYDROGRAPH LRC-1 15
FIGURE 15 JANUARY MESONET DATA 16

SUMMARY OF JANUARY WATER QUALITY SAMPLING

Sampling for January 2018 occurred on the twenty-third and was considered a base flow collection. Water samples were collected at all ten locations, and discharge was measured at four locations. Discharge was not measured at the remaining six locations as a result of low water levels, where the stage measurements were at or below base flow conditions. Mesonet data shows no precipitation occurring on the twenty-third, in the 72 hours prior to sampling, or in the 72 hours after the sampling event. The total rainfall amount in Norman for the month of January was 0.19 inches. All water level gages were operational for the month, with the exception of LT-1.

RESULTS

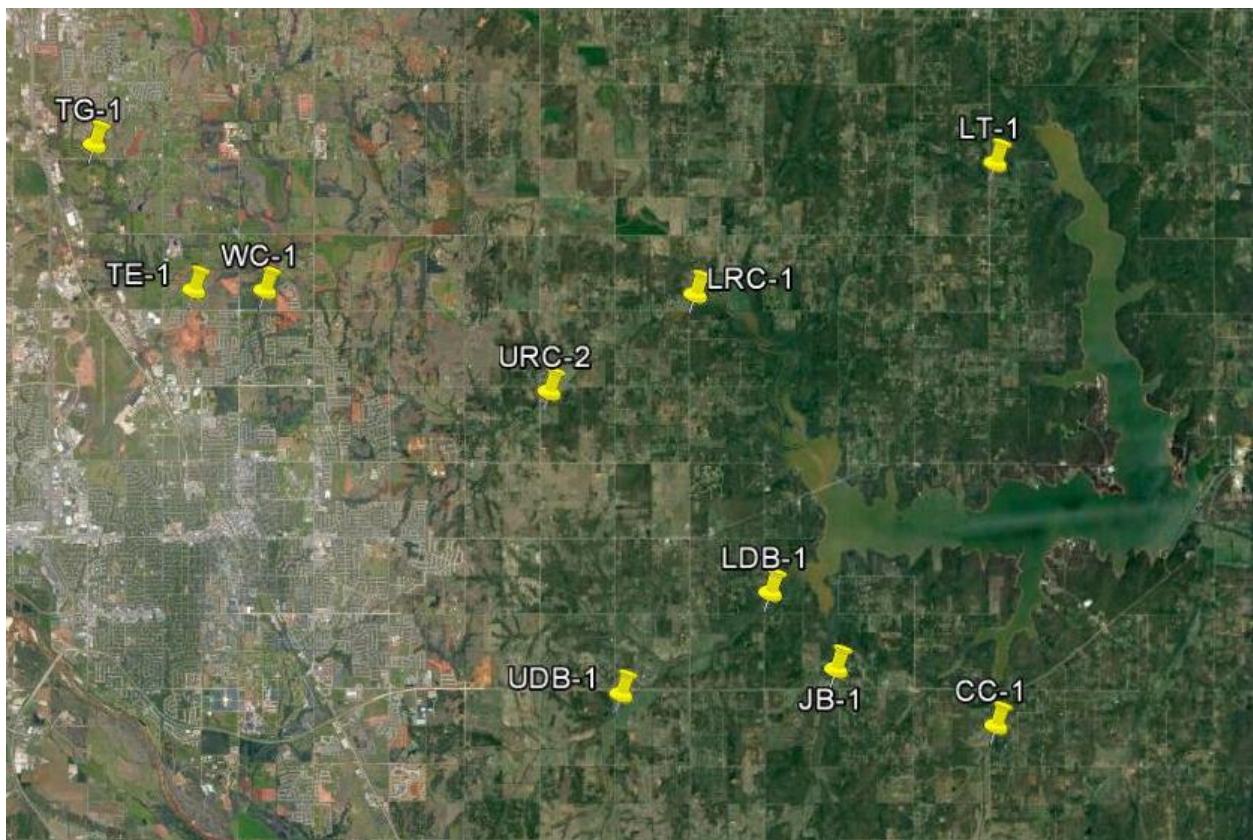


Figure 1 Monitoring Station Map

Field Data Form

Field Measurement Record

Reviewed By: _____ **JM** _____

Station	Date	Time	Field Crew	Temp C°	DO mg/L	SpC µS	pH	Turb (NTU)	Notes
cc-1	1/23/2018	10:30	SD	3.7	12.5	690.0	8.2	5.0	gage box removed for upcoming construction
lt-1	1/23/2018	13:20	SD	7.3	5.7	1100.0	7.8	5.0	isolated pool on DS. Small shallow pool on US
jb-1	1/23/2018	11:30	SD	4.6	16.4	941.0	8.0	4.0	not sure if connected to US at bridge. US pool frozen, channel partly frozen. RP1 barely over water
udb-1	1/23/2018	9:15	SD	3.1	10.4	921.0	7.8	2.0	
ldb-1	1/23/2018	12:45	SD	4.7	17.4	960.0	8.3	3.0	
tg-1	1/24/2018	8:30	SD	2.7	11.5	1107.0	8.3	5.0	
te-1	1/24/2018	10:30	SD	3.0	11.5	953.0	8.3	57.0	
wc-1	1/24/2018	11:15	SD	4.3	8.2	840.0	8.0	5.0	lightly frozen on US and DS. Beaver dam on US side of bridge
lrc-1	1/23/2018	14:30	SD	5.5	11.2	739.0	8.1	7.0	
urc-2	1/23/2018	16:15	SD	9.5	15.8	832.0	8.0	9.0	RP1 not over water. RP2 barely over: 11.59 stage, RP3 11.63?

Table 1 Field Data Form

Site Name	TKN (mg/L)	Nitrate/Nitrite (mg/L)	TP (mg/L)	TSS (mg/L)
TG-1	0.41	0.16	0.043	6.0
CC-1	0.24	<0.05	0.027	<5.0
JB-1	0.49	<0.05	0.053	<5.0
UDB-1	0.17	<0.05	0.017	<5.0
LDB-1	0.20	0.15	0.013	<5.0
LRC-1	0.19	<0.05	0.025	<5.0
URC-2	0.52	<0.05	0.065	6.0
WC-1	0.28	<0.05	0.056	<5.0
TE-1	0.63	<0.05	0.058	16.0
LT-1	0.33	<0.05	0.018	<5.0

Table 2 Laboratory Analysis Summary

Site Name	TKN	Nitrate/Nitrite	TP	TSS
Field Blank	<0.10 mg/L	<0.05 mg/L	<0.010 mg/L	<5.0 mg/L
Duplicate	0.16 mg/L	<0.05 mg/L	0.027 mg/L	<5.0 mg/L
Duplicate RPD	40%* ₁	0%	0%	0%

Table 3 QA/QC Data Where Subscript 1 Denotes a Level 3 RPD

Quality assurance/quality control (QA/QC) of the data includes a field blank and duplicate sample from each collection event, and is qualified by the OWRB. Relative Percent Difference (RPD) of the duplicate sample can be categorized into four levels, where Level 1 likely has no QA issues and Level 4 has major QA issues, and should be used with caution.

SITE	TG-1	CC-1	JB-1	UDB-1	LDB-1	LRC-1	URC-2	WC-1	TE-1	LT-1
STAGE (ft)	9.11	0.36	15.74	17.57	16.22	17.48	11.59	8.37	11.57	N/A
DISCHARGE (ft ³ /s)	0.381	0.385	0.02	0.55	6.6	0.229	0.002	-0.013	-0.03	N/A

Table 4 Station Discharge Summary

Discharge Measurement Summary

Date Generated: Fri Feb 23 2018

File Information		Site Details	
File Name	CC0123.WAD	Site Name	CC
Start Date and Time	2018/01/23 09:19:25	Operator(s)	SD

System Information		Units (English Units)		Discharge Uncertainty		
Sensor Type	FlowTracker	Distance	ft	Category	ISO	Stats
Serial #	P4713	Velocity	ft/s	Accuracy	1.0%	1.0%
CPU Firmware Version	3.9	Area	ft^2	Depth	0.8%	2.6%
Software Ver	2.30	Discharge	cfs	Velocity	2.5%	8.5%
Mounting Correction	0.0%			Width	0.3%	0.3%
				Method	3.9%	-
				# Stations	3.9%	-
				Overall	6.2%	9.0%

Summary			
Averaging Int.	40	# Stations	13
Start Edge	LEW	Total Width	7.000
Mean SNR	34.2 dB	Total Area	2.700
Mean Temp	36.12 °F	Mean Depth	0.386
Disch. Equation	Mid-Section	Mean Velocity	0.1426
		Total Discharge	0.3850

Supplemental Data					
#	Time	Location	Gauge Height	Rated Flow	Comments
1	Tue Jan 23 09:18:33 CST 2018	0.000	0.360		

Measurement Results												
St	Clock	Loc	Method	Depth	%Dep	MeasD	Vel	CorrFact	MeanV	Area	Flow	%Q
0	09:19	0.00	None	0.000	0.0	0.0	0.0000	1.00	0.0000	0.000	0.0000	0.0
1	09:21	1.50	0.6	0.200	0.6	0.080	-0.0010	1.00	-0.0010	0.200	-0.0002	-0.1
2	09:22	2.00	0.6	0.200	0.6	0.080	-0.0003	1.00	-0.0003	0.100	0.0000	0.0
3	09:23	2.50	0.6	0.200	0.6	0.080	-0.0164	1.00	-0.0164	0.100	-0.0016	-0.4
4	09:25	3.00	0.6	0.300	0.6	0.120	-0.0079	1.00	-0.0079	0.150	-0.0012	-0.3
5	09:26	3.50	0.6	0.400	0.6	0.160	0.0302	1.00	0.0302	0.200	0.0060	1.6
6	09:27	4.00	0.6	0.500	0.6	0.200	0.0358	1.00	0.0358	0.250	0.0089	2.3
7	09:28	4.50	0.6	0.600	0.6	0.240	0.2152	1.00	0.2152	0.300	0.0646	16.8
8	09:30	5.00	0.6	0.800	0.6	0.320	0.3406	1.00	0.3406	0.400	0.1362	35.4
9	09:31	5.50	0.6	0.800	0.6	0.320	0.2953	1.00	0.2953	0.400	0.1181	30.7
10	09:32	6.00	0.6	0.700	0.6	0.280	0.1627	1.00	0.1627	0.350	0.0570	14.8
11	09:35	6.50	0.6	0.500	0.6	0.200	-0.0108	1.00	-0.0108	0.250	-0.0027	-0.7
12	09:35	7.00	None	0.000	0.0	0.0	0.0000	1.00	0.0000	0.000	0.0000	0.0

Rows in italics indicate a QC warning. See the Quality Control page of this report for more information.

Figure 2 Discharge Summary CC-1

Discharge Measurement Summary

Date Generated: Fri Feb 23 2018

File Information

File Name LRC0123.WAD
Start Date and Time 2018/01/23 13:25:19

Site Details

Site Name LRC
Operator(s) SD

System Information

Sensor Type FlowTracker
Serial # P4713
CPU Firmware Version 3.9
Software Ver 2.30
Mounting Correction 0.0%

Units (English Units)

Distance ft
Velocity ft/s
Area ft²
Discharge cfs

Discharge Uncertainty

Category	ISO	Stats
Accuracy	1.0%	1.0%
Depth	0.3%	1.9%
Velocity	2.3%	14.9%
Width	0.2%	0.2%
Method	2.4%	-
# Stations	1.8%	-
Overall	3.9%	15.0%

Summary

Averaging Int. 40 # Stations 29
Start Edge LEW Total Width 18.000
Mean SNR 30.0 dB Total Area 14.899
Mean Temp 38.66 °F Mean Depth 0.828
Disch. Equation Mid-Section Mean Velocity 0.0154
Total Discharge 0.2291

Supplemental Data

#	Time	Location	Gauge Height	Rated Flow	Comments
1	Tue Jan 23 13:24:11 CST 2018	0.000	17.480		

Measurement Results

St	Clock	Loc	Method	Depth	%Dep	MeasD	Vel	CorrFact	MeanV	Area	Flow	%Q
0	13:25	0.00	None	0.000	0.0	0.0	0.0000	1.00	0.0000	0.000	0.0000	0.0
1	13:25	1.00	0.6	0.550	0.6	0.220	0.0000	1.00	0.0000	0.412	0.0000	0.0
2	13:26	1.50	0.6	0.650	0.6	0.260	-0.0259	1.00	-0.0259	0.487	-0.0126	-5.5
3	13:28	2.50	0.6	0.900	0.6	0.360	0.0003	1.00	0.0003	0.900	0.0003	0.1
4	13:30	3.50	0.6	0.800	0.6	0.320	-0.0013	1.00	-0.0013	0.600	-0.0008	-0.3
5	13:31	4.00	0.6	0.800	0.6	0.320	0.0128	1.00	0.0128	0.400	0.0051	2.2
6	13:32	4.50	0.6	0.950	0.6	0.380	0.0171	1.00	0.0171	0.475	0.0081	3.5
7	13:33	5.00	0.6	1.000	0.6	0.400	0.0335	1.00	0.0335	0.500	0.0167	7.3
8	13:35	5.50	0.6	1.100	0.6	0.440	0.0256	1.00	0.0256	0.550	0.0141	6.1
9	13:36	6.00	0.6	1.100	0.6	0.440	0.0289	1.00	0.0289	0.550	0.0159	6.9
10	13:37	6.50	0.6	1.300	0.6	0.520	0.0351	1.00	0.0351	0.650	0.0228	10.0
11	13:38	7.00	0.6	1.300	0.6	0.520	0.0394	1.00	0.0394	0.650	0.0256	11.2
12	13:39	7.50	0.6	1.000	0.6	0.400	0.0459	1.00	0.0459	0.500	0.0230	10.0
13	13:40	8.00	0.6	1.100	0.6	0.440	0.0167	1.00	0.0167	0.550	0.0092	4.0
14	13:42	8.50	0.6	1.050	0.6	0.420	0.0351	1.00	0.0351	0.525	0.0184	8.0
15	13:43	9.00	0.6	1.000	0.6	0.400	0.0325	1.00	0.0325	0.500	0.0162	7.1
16	13:43	9.50	0.6	1.000	0.6	0.400	0.0528	1.00	0.0528	0.500	0.0264	11.5
17	13:45	10.00	0.6	0.950	0.6	0.380	0.0492	1.00	0.0492	0.475	0.0234	10.2
18	13:45	10.50	0.6	0.900	0.6	0.360	0.0367	1.00	0.0367	0.450	0.0165	7.2
19	13:47	11.00	0.6	0.900	0.6	0.360	-0.0023	1.00	-0.0023	0.450	-0.0010	-0.5
20	13:48	11.50	0.6	0.900	0.6	0.360	-0.0003	1.00	-0.0003	0.450	-0.0001	-0.1
21	13:49	12.00	0.6	0.900	0.6	0.360	0.0272	1.00	0.0272	0.450	0.0123	5.3
22	13:50	12.50	0.6	0.900	0.6	0.360	0.0026	1.00	0.0026	0.450	0.0012	0.5
23	13:51	13.00	0.6	0.900	0.6	0.360	0.0108	1.00	0.0108	0.675	0.0073	3.2
24	13:53	14.00	0.6	0.900	0.6	0.360	-0.0118	1.00	-0.0118	0.900	-0.0106	-4.6
25	13:54	15.00	0.6	0.750	0.6	0.300	0.0033	1.00	0.0033	0.750	0.0025	1.1
26	13:55	16.00	0.6	0.600	0.6	0.240	-0.0128	1.00	-0.0128	0.600	-0.0077	-3.4
27	13:56	17.00	0.6	0.500	0.6	0.200	-0.0059	1.00	-0.0059	0.500	-0.0030	-1.3
28	13:56	18.00	None	0.000	0.0	0.0	0.0000	1.00	0.0000	0.000	0.0000	0.0

Rows in italics indicate a QC warning. See the Quality Control page of this report for more information.

Figure 3 Discharge Summary LRC-1

Discharge Measurement Summary

Date Generated: Fri Feb 23 2018

File Information

File Name TG0124.WAD
 Start Date and Time 2018/01/24 07:47:48

Site Details

Site Name TG
 Operator(s) SD

System Information

Sensor Type FlowTracker
 Serial # P4713
 CPU Firmware Version 3.9
 Software Ver 2.30
 Mounting Correction 0.0%

Units (English Units)

Distance ft
 Velocity ft/s
 Area ft²
 Discharge cfs

Discharge Uncertainty

Category	ISO	Stats
Accuracy	1.0%	1.0%
Depth	0.7%	2.0%
Velocity	1.9%	27.9%
Width	0.2%	0.2%
Method	3.5%	-
# Stations	2.2%	-
Overall	4.7%	28.0%

Summary

Averaging Int. 40 # Stations 23
 Start Edge LEW Total Width 12.500
 Mean SNR 29.7 dB Total Area 7.249
 Mean Temp 33.50 °F Mean Depth 0.580
 Disch. Equation Mid-Section Mean Velocity 0.0525
Total Discharge 0.3805

Supplemental Data

#	Time	Location	Gauge Height	Rated Flow	Comments
1	Wed Jan 24 07:47:02 CST 2018	0.000	9.110		

Measurement Results

St	Clock	Loc	Method	Depth	%Dep	MeasD	Vel	CorrFact	MeanV	Area	Flow	%Q
0	07:47	0.00	None	0.000	0.0	0.0	0.0000	1.00	0.0000	0.000	0.0000	0.0
1	07:47	0.50	0.6	0.300	0.6	0.120	-0.0207	1.00	-0.0207	0.150	-0.0031	-0.8
2	07:48	1.00	0.6	0.300	0.6	0.120	-0.0131	1.00	-0.0131	0.150	-0.0020	-0.5
3	07:49	1.50	0.6	0.300	0.6	0.120	0.1962	1.00	0.1962	0.150	0.0294	7.7
4	07:50	2.00	0.6	0.400	0.6	0.160	0.2306	1.00	0.2306	0.200	0.0461	12.1
5	07:51	2.50	0.6	0.500	0.6	0.200	-0.0007	1.00	-0.0007	0.250	-0.0002	0.0
6	07:53	3.00	0.6	0.700	0.6	0.280	0.1946	1.00	0.1946	0.350	0.0681	17.9
7	07:54	3.50	0.6	0.800	0.6	0.320	0.1086	1.00	0.1086	0.400	0.0434	11.4
8	07:55	4.00	0.6	0.800	0.6	0.320	0.2136	1.00	0.2136	0.400	0.0854	22.4
9	07:56	4.50	0.6	0.800	0.6	0.320	0.2100	1.00	0.2100	0.400	0.0840	22.1
10	07:57	5.00	0.6	0.800	0.6	0.320	0.1480	1.00	0.1480	0.400	0.0592	15.6
11	07:58	5.50	0.6	0.900	0.6	0.360	0.0686	1.00	0.0686	0.450	0.0309	8.1
12	07:59	6.00	0.6	0.900	0.6	0.360	0.0164	1.00	0.0164	0.450	0.0074	1.9
13	08:00	6.50	0.6	0.900	0.6	0.360	0.0617	1.00	0.0617	0.450	0.0278	7.3
14	08:01	7.00	0.6	0.850	0.6	0.340	0.0315	1.00	0.0315	0.425	0.0134	3.5
15	08:02	7.50	0.6	0.850	0.6	0.340	0.0203	1.00	0.0203	0.425	0.0086	2.3
16	08:03	8.00	0.6	0.800	0.6	0.320	-0.0174	1.00	-0.0174	0.400	-0.0070	-1.8
17	08:04	8.50	0.6	0.800	0.6	0.320	-0.0361	1.00	-0.0361	0.400	-0.0144	-3.8
18	08:05	9.00	0.6	0.700	0.6	0.280	-0.0364	1.00	-0.0364	0.350	-0.0127	-3.4
19	08:06	9.50	0.6	0.600	0.6	0.240	-0.0574	1.00	-0.0574	0.300	-0.0172	-4.5
20	08:08	10.00	0.6	0.500	0.6	0.200	-0.0797	1.00	-0.0797	0.375	-0.0299	-7.9
21	08:09	11.00	0.6	0.300	0.6	0.120	-0.0978	1.00	-0.0978	0.375	-0.0366	-9.6
22	08:09	12.50	None	0.000	0.0	0.0	0.0000	1.00	0.0000	0.000	0.0000	0.0

Rows in italics indicate a QC warning. See the Quality Control page of this report for more information.

Figure 4 Discharge Summary TG-1

Discharge Measurement Summary

Date Generated: Fri Feb 23 2018

File Information				Site Details								
File Name	WC0124.WAD			Site Name	WC							
Start Date and Time	2018/01/24 10:22:29			Operator(s)	SD							
System Information				Units (English Units)		Discharge Uncertainty						
Sensor Type	FlowTracker			Distance	ft		Category	ISO	Stats			
Serial #	P4713			Velocity	ft/s		Accuracy	1.0%	1.0%			
CPU Firmware Version	3.9			Area	ft^2		Depth	1.2%	7.1%			
Software Ver	2.30			Discharge	cfs		Velocity	9.8%	49.6%			
Mounting Correction	0.0%											
Summary												
Averaging Int.	40	# Stations	13									
Start Edge	LEW	Total Width	6.000									
Mean SNR	45.1 dB	Total Area	2.400									
Mean Temp	37.08 °F	Mean Depth	0.400									
Disch. Equation	Mid-Section	Mean Velocity	-0.0055									
			Total Discharge	-0.0132								
Supplemental Data												
#	Time	Location	Gauge Height	Rated Flow	Comments							
1	Wed Jan 24 10:21:21 CST 2018	0.000	8.370									
Measurement Results												
St	Clock	Loc	Method	Depth	%Dep	MeasD	Vel	CorrFact	MeanV	Area	Flow	%Q
0	10:22	0.00	None	0.000	0.0	0.0	0.0000	1.00	0.0000	0.000	0.0000	0.0
1	10:23	0.50	0.6	0.400	0.6	0.160	-0.0092	1.00	-0.0092	0.200	-0.0018	13.9
2	10:24	1.00	0.6	0.400	0.6	0.160	-0.0102	1.00	-0.0102	0.200	-0.0020	15.4
3	10:25	1.50	0.6	0.300	0.6	0.120	0.0000	1.00	0.0000	0.150	0.0000	0.0
4	10:26	2.00	0.6	0.400	0.6	0.160	-0.0030	1.00	-0.0030	0.200	-0.0006	4.5
5	10:27	2.50	0.6	0.500	0.6	0.200	0.0138	1.00	0.0138	0.250	0.0034	-26.1
6	10:28	3.00	0.6	0.500	0.6	0.200	0.0141	1.00	0.0141	0.250	0.0035	-26.7
7	10:29	3.50	0.6	0.500	0.6	0.200	-0.0010	1.00	-0.0010	0.250	-0.0002	1.9
8	10:30	4.00	0.6	0.500	0.6	0.200	-0.0200	1.00	-0.0200	0.250	-0.0050	37.9
9	10:31	4.50	0.6	0.500	0.6	0.200	-0.0092	1.00	-0.0092	0.250	-0.0023	17.4
10	10:32	5.00	0.6	0.500	0.6	0.200	-0.0279	1.00	-0.0279	0.250	-0.0070	52.9
11	10:36	5.50	0.6	0.300	0.6	0.120	-0.0079	1.00	-0.0079	0.150	-0.0012	9.0
12	10:36	6.00	None	0.000	0.0	0.0	0.0000	1.00	0.0000	0.000	0.0000	0.0

Rows in italics indicate a QC warning. See the Quality Control page of this report for more information.

Figure 5 Discharge Summary WC-1

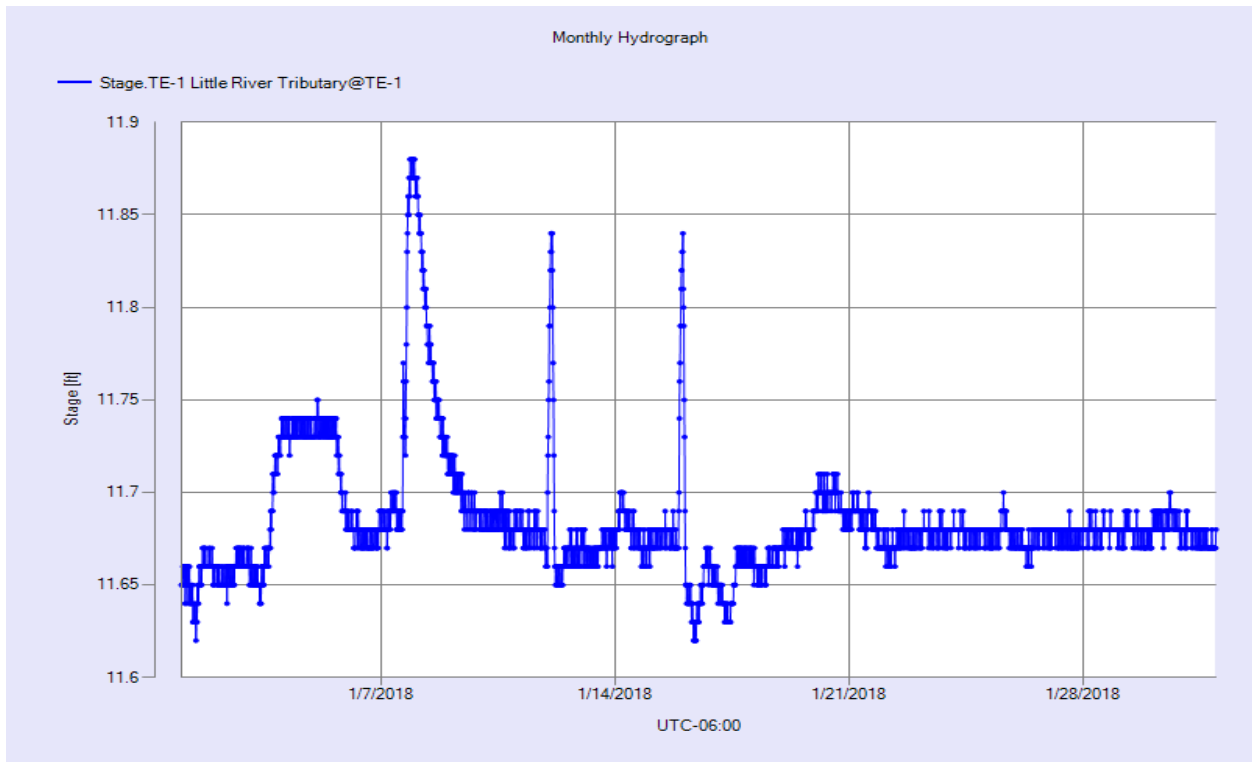


Figure 6 Monthly Hydrograph TE-1

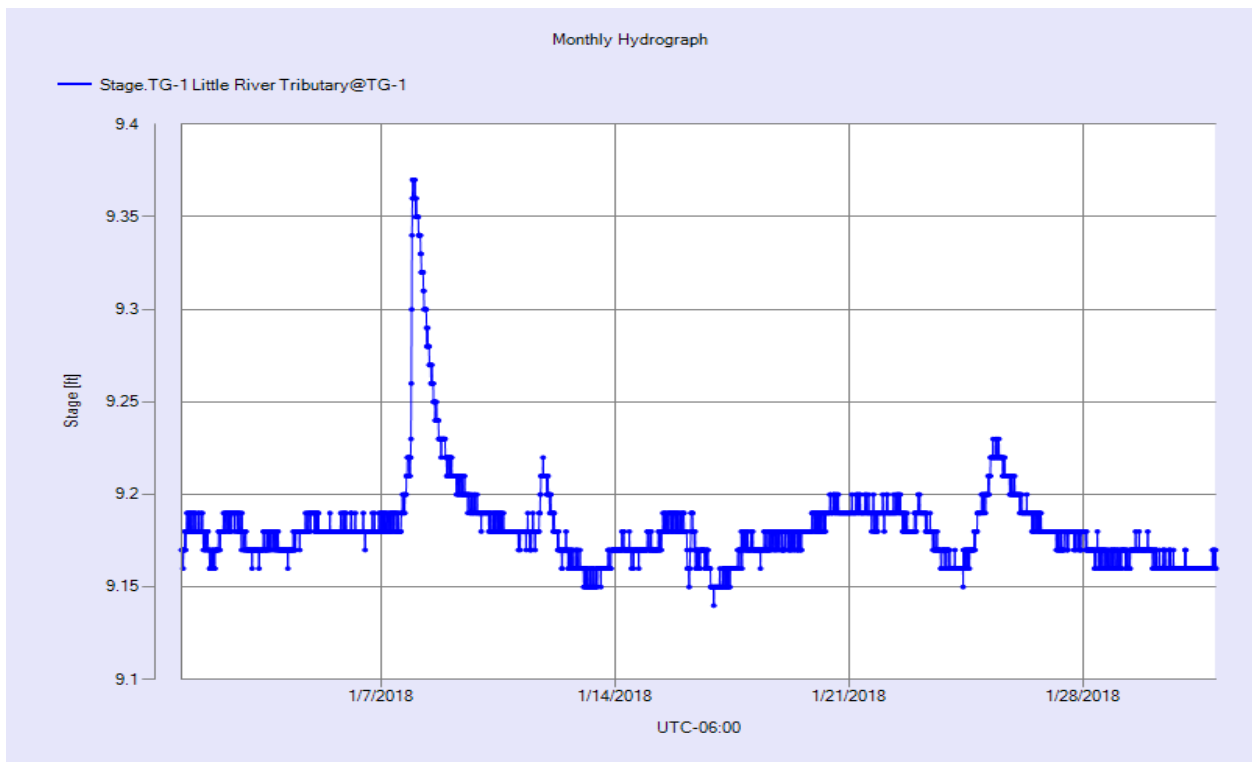


Figure 7 Monthly Hydrograph TG-1

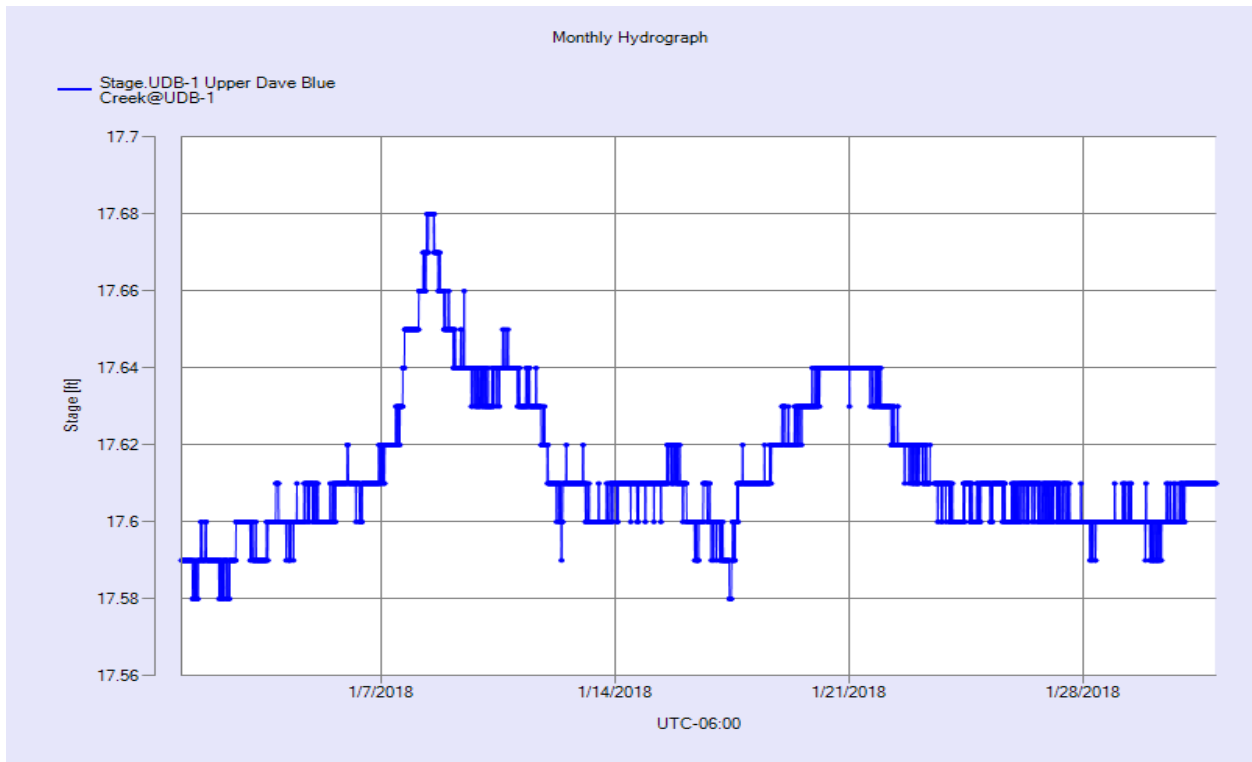


Figure 8 Monthly Hydrograph UDB-1

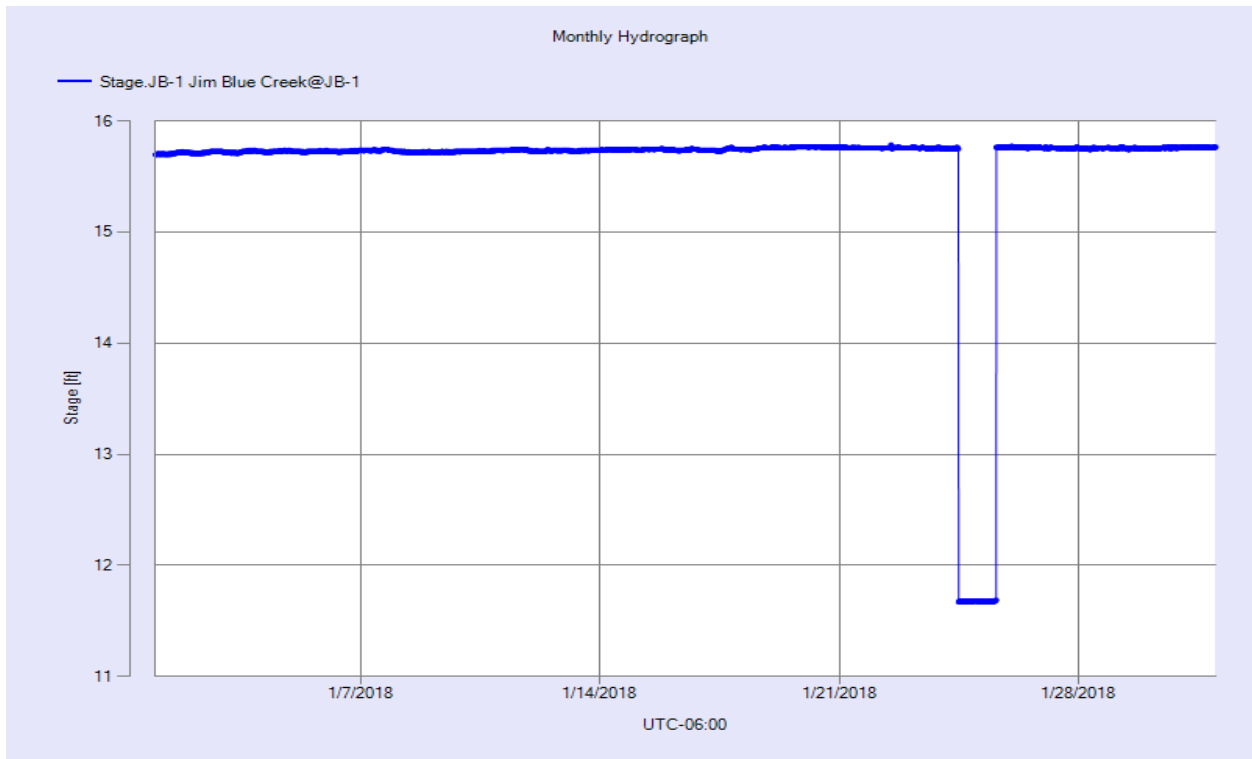


Figure 9 Monthly Hydrograph JB-1

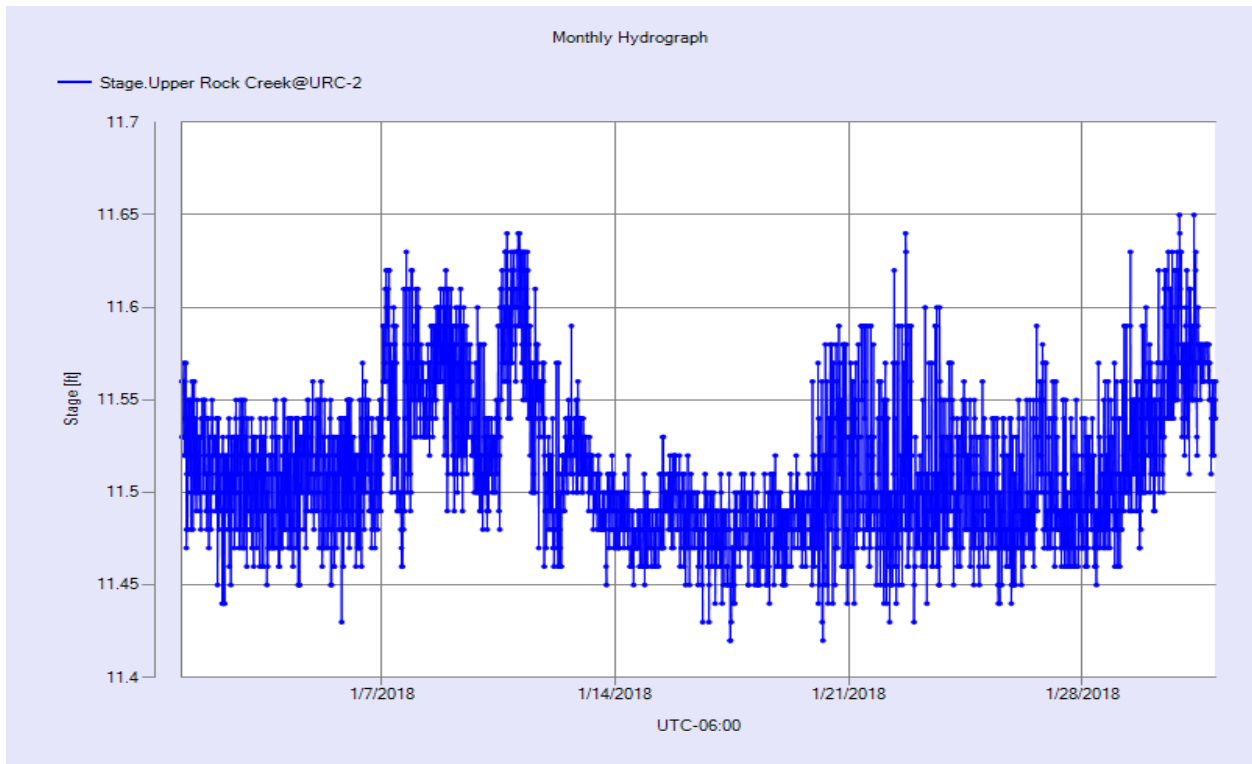


Figure 10 Monthly Hydrograph URC-2

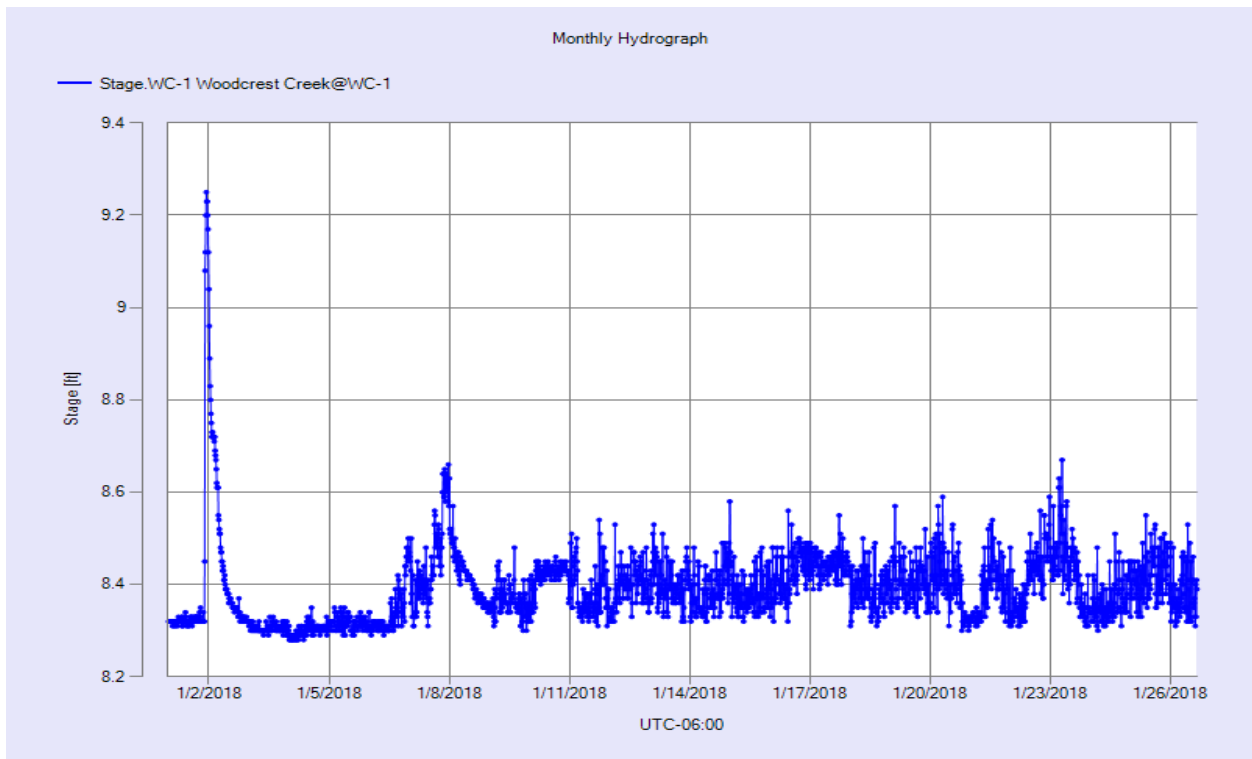


Figure 11 Monthly Hydrograph WC-1

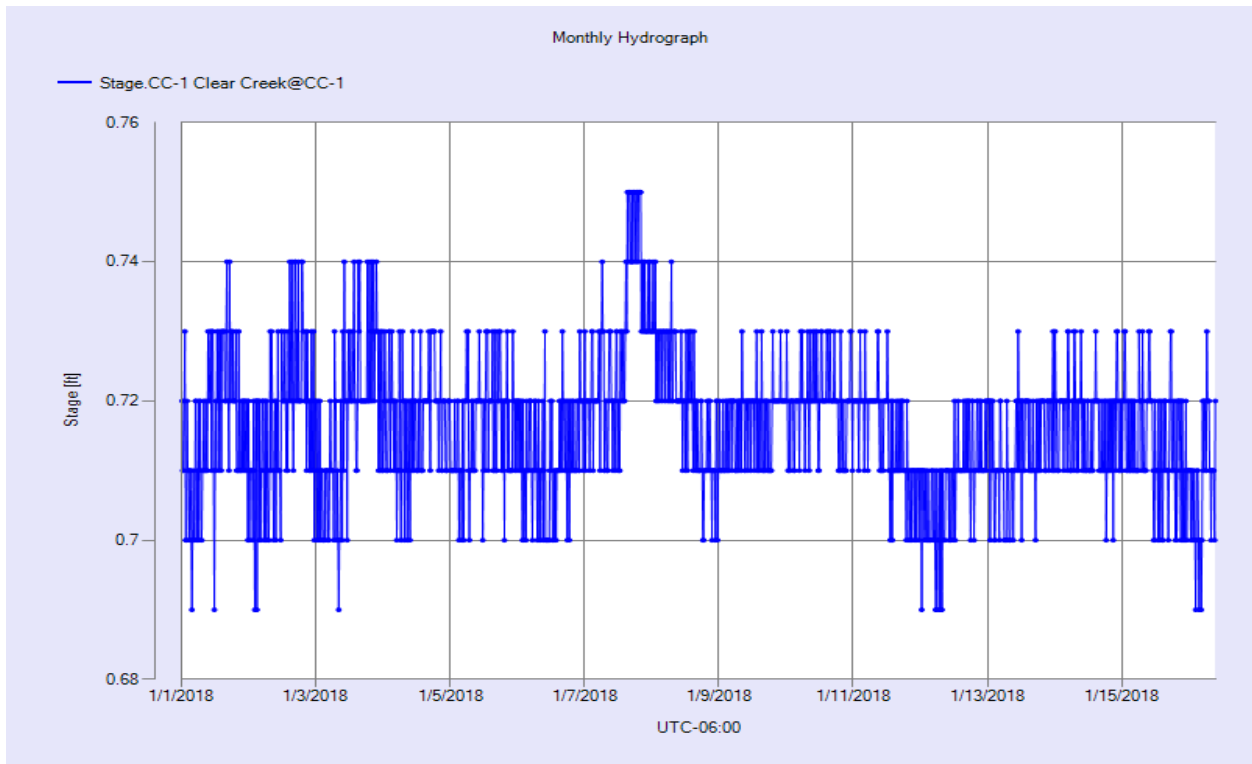


Figure 12 Monthly Hydrograph CC-1

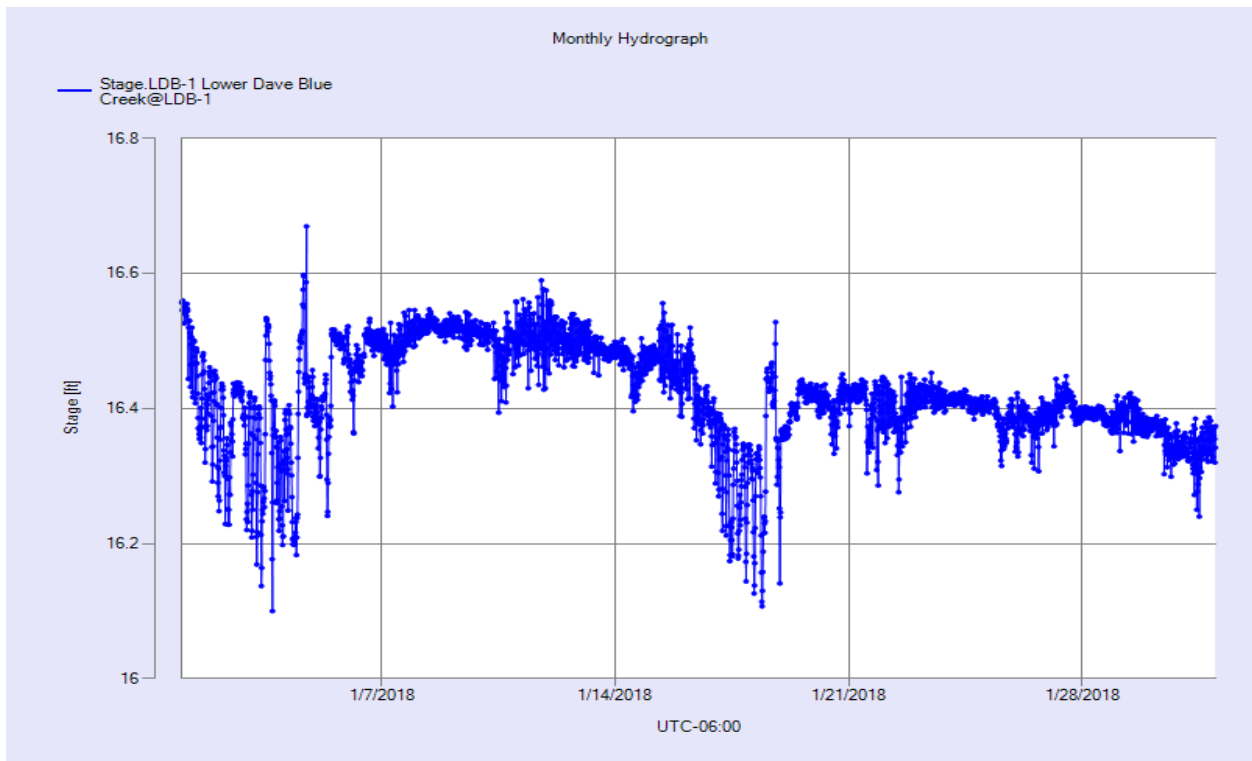


Figure 13 Monthly Hydrograph LDB-1

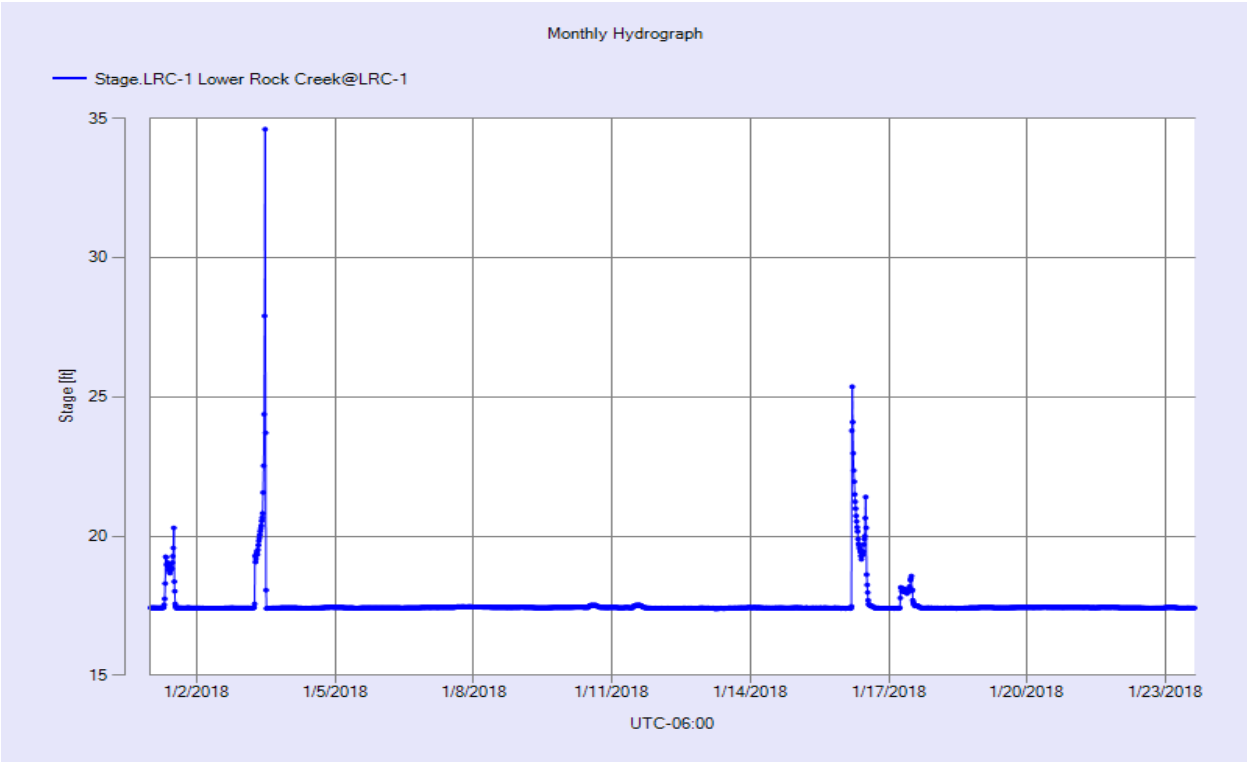


Figure 14 Monthly Hydrograph LRC-1

MESONET CLIMATOLOGICAL DATA SUMMARY
 (NRMN) Norman
 Latitude: 35-14-09

January 2018
 Nearest City: 2.1 NW Norman
 Longitude: 97-27-53

Time Zone: Midnight-Midnight CST
 County: Cleveland
 Elevation: 1171 feet

DAY	TEMPERATURE (°F)				DEG DAYS		HUMIDITY (%)			RAIN (in)	PRESSURE (in)		WIND SPEED (mph)			SOLAR (MJ/m ²)	4" SOIL TEMPERATURES			
	MAX	MIN	AVG	DEWPT	HDD	CDD	MAX	MIN	AVG		STN	MSL	DIR	AVG	MAX		SOD	BARE	MAX	MIN
1	20	5	12.2	-1.8	52	0	72	35	54	0.00	29.47	30.75	NNE	8.6	20.8	12.08	36.5	32.7	34	32
2	21	8	15.7	3.0	50	0	68	46	57	0.00	29.30	30.57	NE	4.3	11.5	3.95	35.4	31.9	32	32
3	42	13	26.1	11.8	37	0	78	35	56	0.00	29.09	30.35	NNW	7.5	23.2	12.22	35.4	31.4	32	30
4	45	18	31.4	15.4	34	0	84	31	54	0.00	29.06	30.32	S	4.8	12.5	11.72	36.6	31.9	32	31
5	56	22	37.5	21.1	26	0	82	28	54	0.00	29.01	30.26	SSW	3.1	10.3	12.11	38.1	32.9	34	32
6	58	25	42.5	28.1	23	0	74	36	58	0.00	28.97	30.23	SSE	7.4	29.4	11.04	39.8	36.9	41	34
7	51	42	48.4	42.6	19	0	100	51	82	0.18	28.67	29.92	SSE	11.3	32.1	0.86	43.2	42.6	44	41
8	56	33	41.7	33.2	21	0	93	39	74	0.00	28.90	30.15	NNW	5.9	21.6	12.39	43.4	42.1	47	39
9	56	30	42.9	37.0	22	0	94	53	81	0.00	28.77	30.02	SSE	9.7	26.1	10.34	43.1	41.7	46	39
10	59	41	48.1	42.6	15	0	96	56	82	0.01	28.49	29.73	SSE	14.5	31.8	9.48	44.8	44.5	48	42
11	52	20	33.9	25.8	29	0	97	47	73	0.00	28.69	29.93	NNW	19.3	44.7	4.91	44.3	43.0	46	38
12	34	14	23.5	7.0	41	0	67	33	50	0.00	29.08	30.34	N	11.1	24.1	12.46	39.5	36.4	38	35
13	36	20	27.0	8.0	37	0	64	28	46	0.00	29.29	30.55	N	7.2	19.7	11.72	39.4	37.0	40	35
14	52	28	37.3	15.6	25	0	57	28	42	0.00	29.12	30.38	S	8.2	23.8	11.70	40.1	38.7	43	36
15	41	17	28.9	16.4	36	0	78	38	59	0.00	29.17	30.44	N	14.6	37.6	4.81	39.3	37.5	39	36
16	20	6	12.6	-2.4	52	0	70	35	51	0.00	29.48	30.76	N	12.1	35.4	13.48	36.1	34.2	36	33
17	34	5	19.2	2.8	46	0	86	27	53	0.00	29.35	30.62	S	4.9	15.9	13.55	34.5	32.3	33	32
18	50	18	33.3	8.9	31	0	59	18	38	0.00	29.06	30.32	S	10.0	29.1	13.46	35.5	32.6	33	32
19	61	28	42.9	26.4	21	0	88	28	55	0.00	28.76	30.01	S	11.8	26.7	13.10	37.8	35.6	40	33
20	69	50	57.3	45.8	5	0	89	34	69	0.00	28.59	29.84	S	13.5	30.6	12.61	43.2	43.8	48	40
21	72	45	59.7	42.2	7	0	94	12	61	0.00	28.51	29.75	S	15.5	38.5	8.49	46.7	48.1	51	46
22	51	34	41.8	24.1	23	0	64	38	50	0.00	28.66	29.91	WNW	16.5	44.7	7.36	45.0	45.4	49	43
23	53	25	37.5	17.3	26	0	69	21	47	0.00	28.99	30.24	NW	6.3	16.2	14.26	42.8	42.4	47	39
24	61*	23*	42.1*	19.7*	23*	0*	80*	20*	45*	0.00*	29.12*	30.38*	S *	4.8*	17.8*	13.93*	42.2*	41.8*	47*	37*
25	66	37	50.7	18.3	14	0	51	12	31	0.00	29.00	30.26	S	11.8	33.7	14.62	43.3	43.9	48	40
26	59	49	53.3	42.7	11	0	91	47	69	0.00	28.82	30.08	S	12.8	29.4	4.84	45.5	46.8	49	46
27	59	30	46.8	22.5	20	0	92	16	43	0.00	29.02	30.28	NNE	9.5	24.1	14.78	46.5	47.5	51	45
28	63	24	42.9	16.5	21	0	74	11	41	0.00	29.08	30.34	NNW	4.6	24.3	14.97	44.3	44.5	50	40
29	44	23	32.5	16.1	32	0	69	32	52	0.00	29.28	30.54	N	9.1	24.9	14.46	43.7	43.6	47	41
30	58	27	42.1	18.8	22	0	57	24	41	0.00	28.99	30.24	SSE	11.9	33.6	13.74	42.6	42.5	46	39
31	72	46	55.2	27.1	6	0	47	18	36	0.00	28.58	29.82	SSW	12.0	29.7	15.44	45.2	46.6	52	43

51* 26* 37.6* 21.0* <- Monthly Averages -> 28.98* 30.24* S * 9.8* 44.7* 11.13* 41.1* 39.8* 43* 37*

Temperature - Highest: 72*	Degree Days - Total HDD: 828*	Number of Days With:
Lowest: 5*	Total CDD: 0*	Tmax ≥ 90: 0* Rainfall ≥ 0.01 inch: 2*
		Tmax ≤ 32: 3* Rainfall ≥ 0.10 inch: 1*
Rainfall: Monthly Total: 0.19* in.	Humidity - Highest: 100*	Tmin ≤ 32: 22* Avg Wind Speed ≥ 10 mph: 15*
Greatest 24 Hr: 0.18* in.	Lowest: 11*	Tmin ≤ 0: 0* Max Wind Speed ≥ 30 mph: 10*