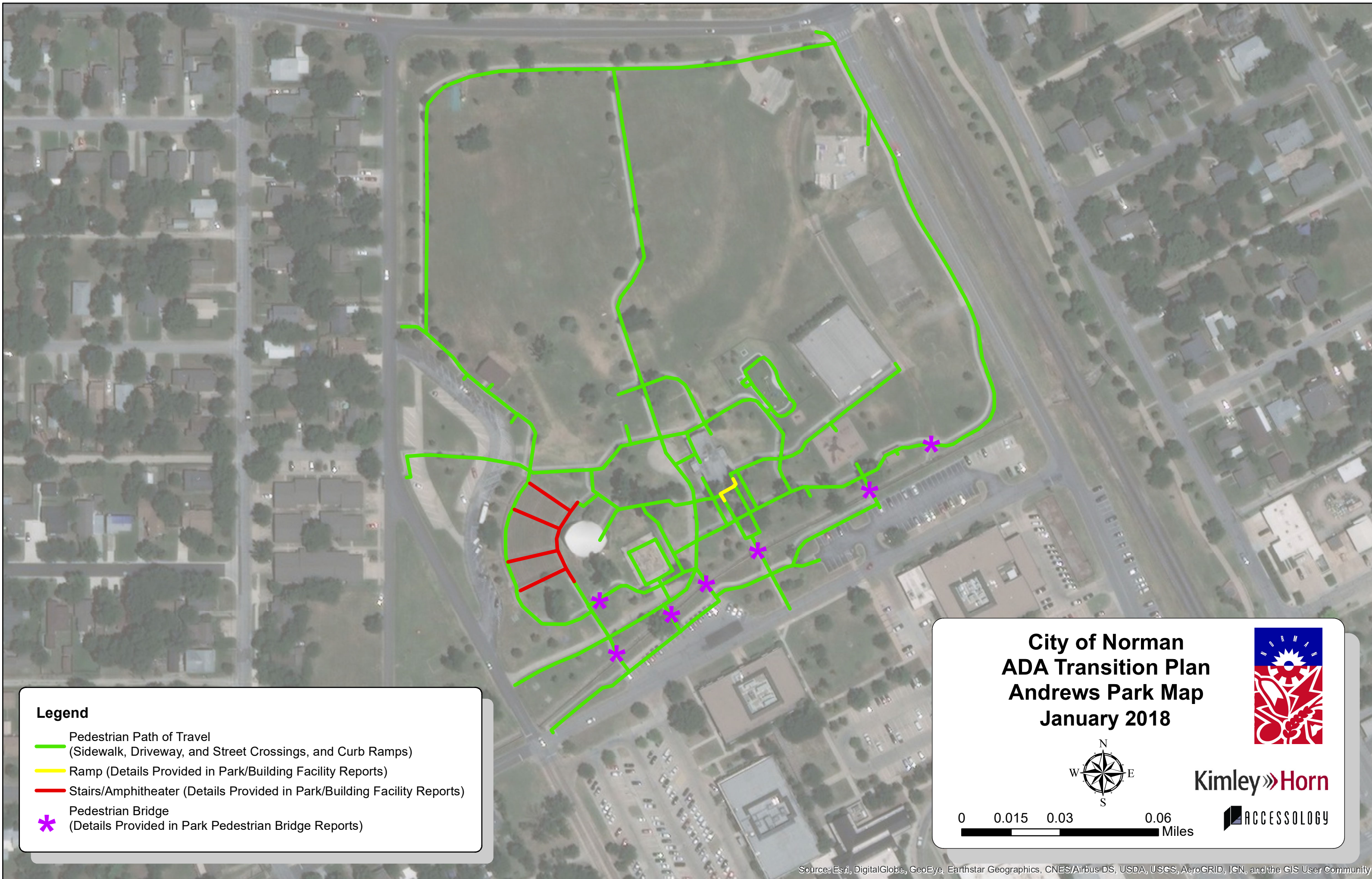


City of Norman
ADA Self-Evaluation and Transition Plan
Park Cost Projection Summary
5/1/2018

GPS ID	Project Name	Facilities	Sidewalks	Unsignalized Intersections	Pedestrian Birdges	Cost Projection
1	Andrews Park	\$ 85,790	\$ 173,000	\$ 93,000	\$ 115,000	\$ 466,790
2	Lions Park	\$ 82,450	\$ 74,000	\$ 33,000	\$ 14,000	\$ 203,450
3	Westwood Park	\$ 120,700	\$ 55,000	\$ 18,000	\$ -	\$ 193,700
TOTAL		\$ 288,940	\$ 302,000	\$ 144,000	\$ 129,000	\$ 863,940



Legend

- Pedestrian Path of Travel
(Sidewalk, Driveway, and Street Crossings, and Curb Ramps)
- Ramp (Details Provided in Park/Building Facility Reports)
- Stairs/Amphitheater (Details Provided in Park/Building Facility Reports)
- ✱ Pedestrian Bridge
(Details Provided in Park Pedestrian Bridge Reports)

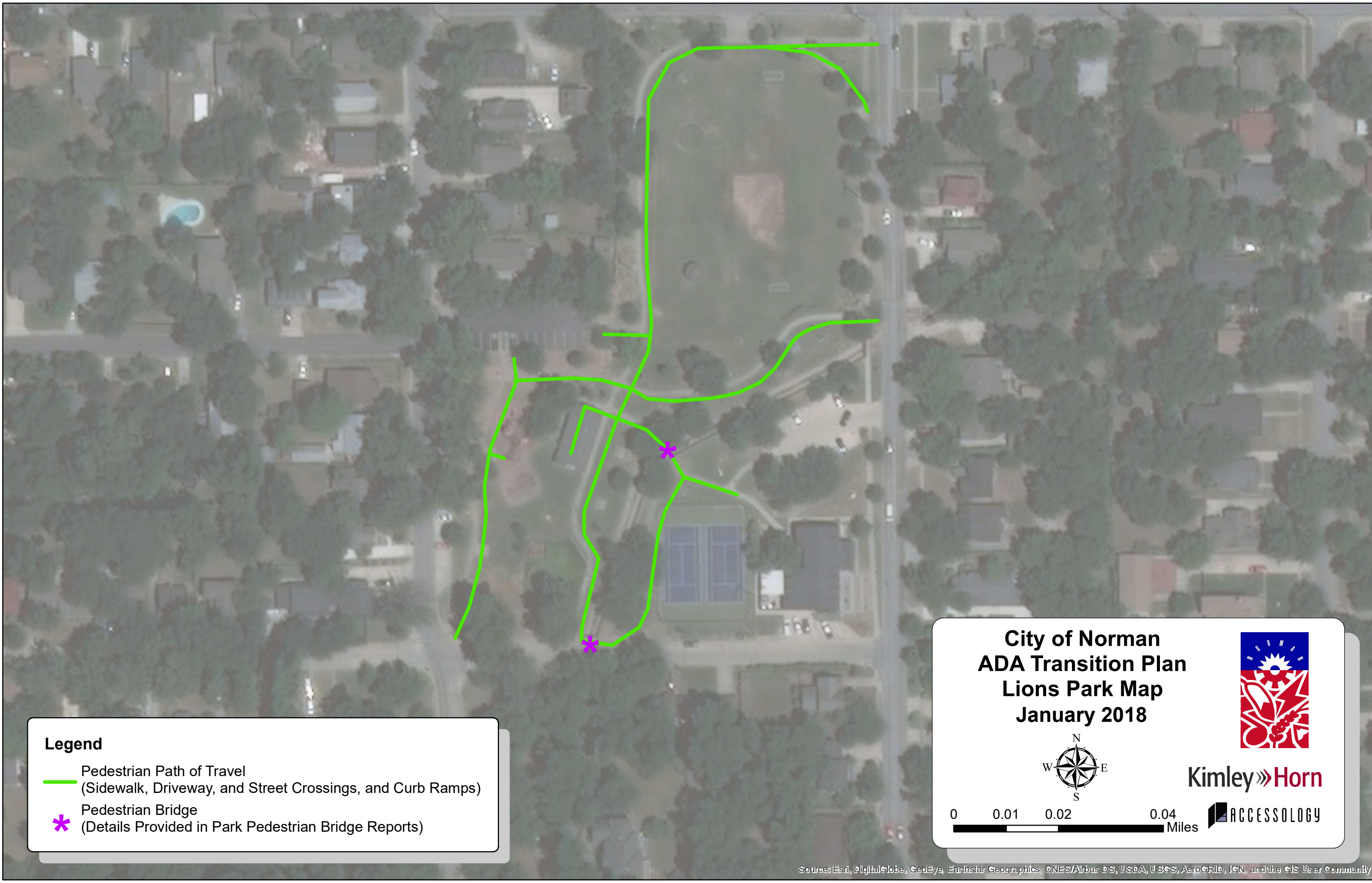
**City of Norman
ADA Transition Plan
Andrews Park Map
January 2018**





Kimley»Horn

0 0.015 0.03 0.06 Miles





Legend

-  Pedestrian Path of Travel
(Sidewalk, Driveway, and Street Crossings, and Curb Ramps)
-  Pedestrian Bridge
(Details Provided in Park Pedestrian Bridge Reports)


**City of Norman
ADA Transition Plan
Lions Park Map
January 2018**

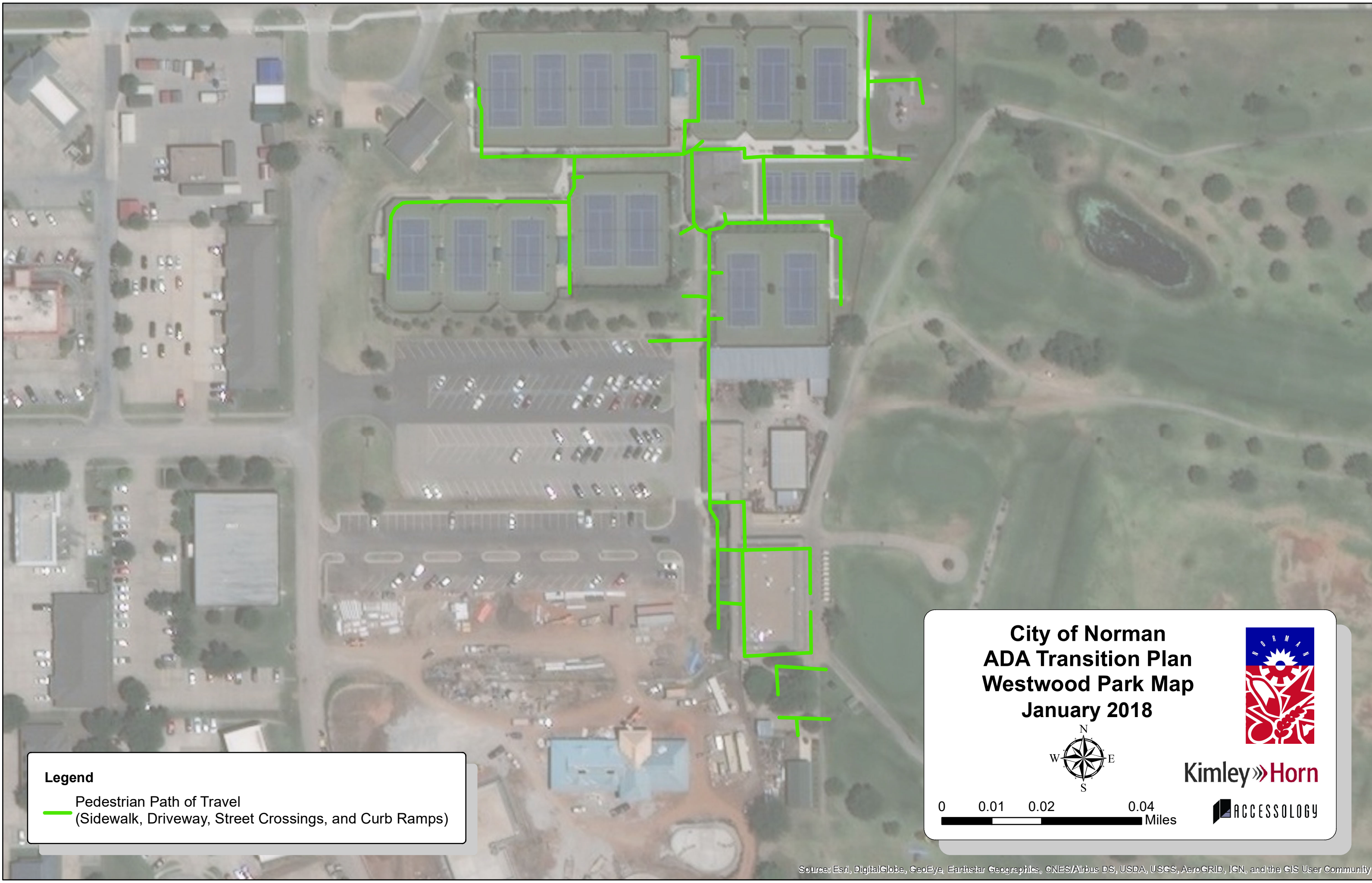


Kimley»Horn



0 0.01 0.02 0.04 Miles



Legend

 Pedestrian Path of Travel
(Sidewalk, Driveway, Street Crossings, and Curb Ramps)

**City of Norman
ADA Transition Plan
Westwood Park Map
January 2018**



Kimley»Horn

0 0.01 0.02 0.04 Miles

